



Corrigendum to **“The substructure of extremely hot summers in the Northern Hemisphere” published in Weather Clim. Dynam., 1, 45–62, 2020**

Matthias Röthlisberger, Michael Sprenger, Emmanouil Flaounas, Urs Beyerle, and Heini Wernli

Institute for Atmospheric and Climate Science, ETH Zürich, Zurich, Switzerland

Correspondence: Matthias Röthlisberger (matthias.roethlisberger@env.ethz.ch)

Published: 12 November 2020

During the publication process the axis labels in Figs. 3 and 4 of the accepted paper were altered in erroneous ways. Figures 3 and 4 with the correct axis labels are provided below.

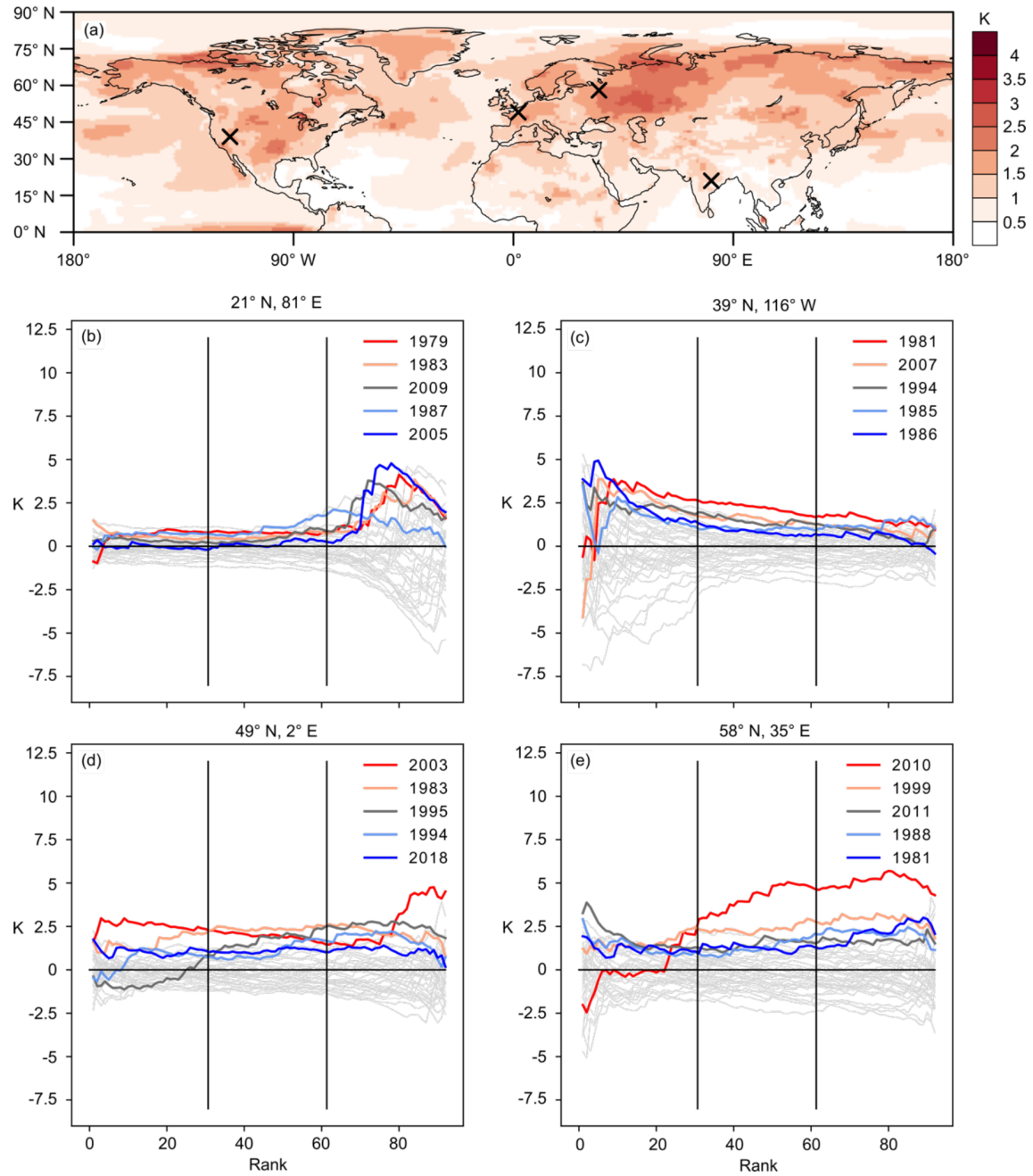


Figure 3. Extreme-summer T2m anomaly and extreme-summer substructure for selected grid points in ERA-Interim. Panel (a) depicts XA^{ERA-I} ; panels (b)–(e) show $RDA_{d,k}^{ERA-I}$ for the five ERA-Interim extreme summers in colours and for the remaining summers in light grey. Crosses in panel (a) indicate the grid points for which the $RDA_{d,k}^{ERA-I}$ values are shown in panels (b)–(e).

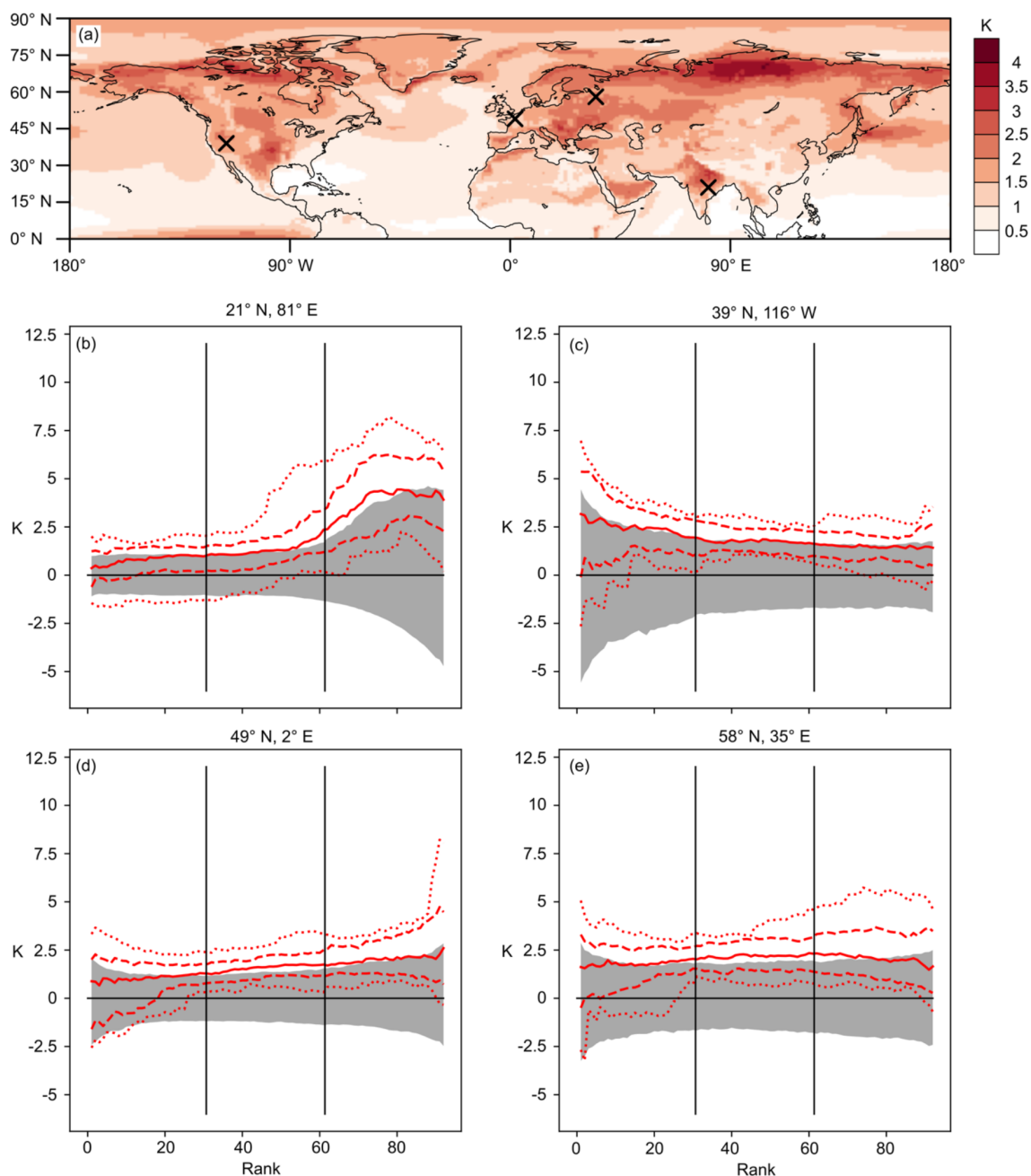


Figure 4. Extreme-summer T2m anomaly and extreme-summer substructure for selected grid points in CESM. Panel (a) displays XA^{CESM} , and panels (b)–(e) show in red the maximum and minimum (dotted) 90th and 10th percentile (dashed) and the median (solid red) $RDA_{d,k}^{CESM}$ of the 35 CESM extreme summers. The 5th- to 95th-percentile range of the $RDA_{d,k}^{CESM}$ of all JJA seasons is depicted in grey. Crosses in panel (a) indicate the grid points for which the rank day anomalies are shown in panels (b)–(e).