



## *Supplement of*

# **The impact of GPS and high-resolution radiosonde nudging on the simulation of heavy precipitation during HyMeX IOP6**

**Alberto Caldas-Alvarez et al.**

*Correspondence to:* Alberto Caldas-Alvarez ([alberto.caldas-alvarez@kit.edu](mailto:alberto.caldas-alvarez@kit.edu))

The copyright of individual parts of the supplement might differ from the article licence.

12 Supplementary Material (SM)

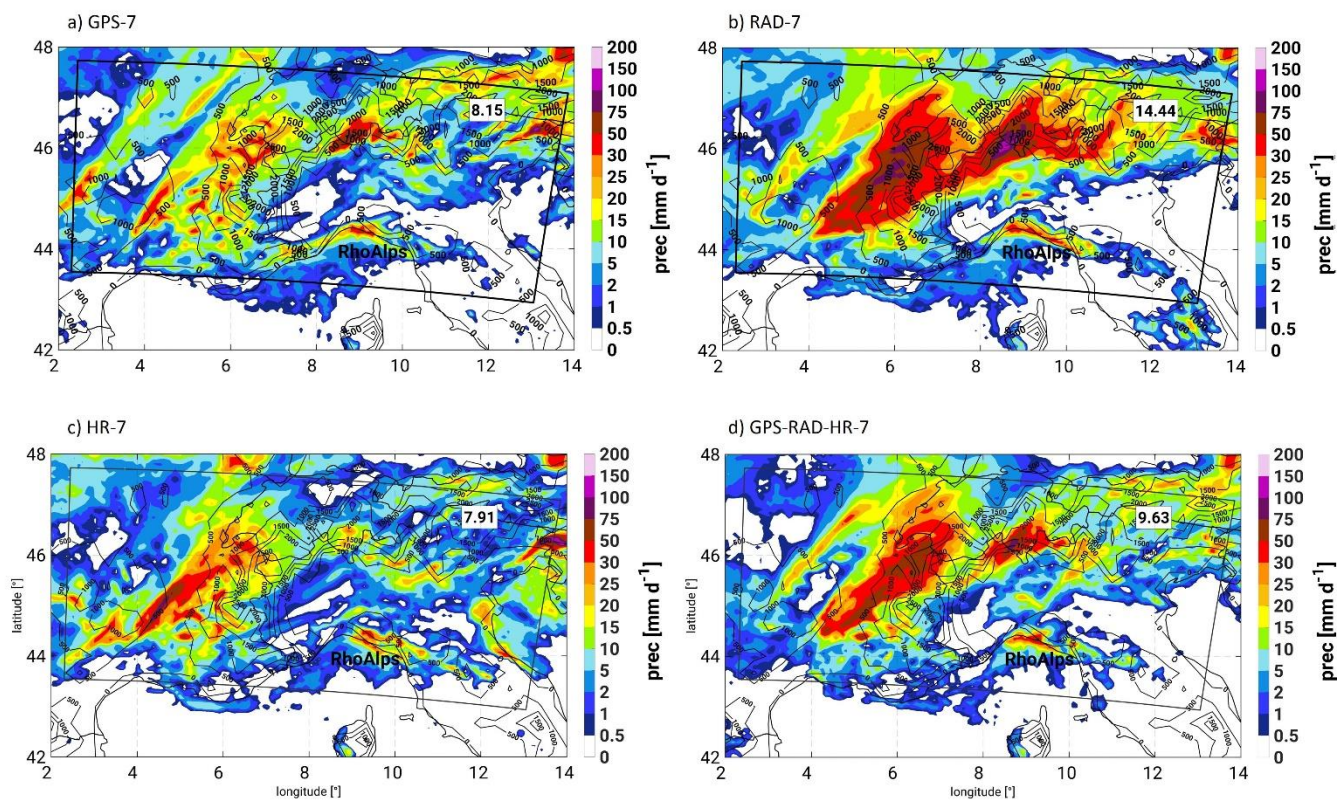
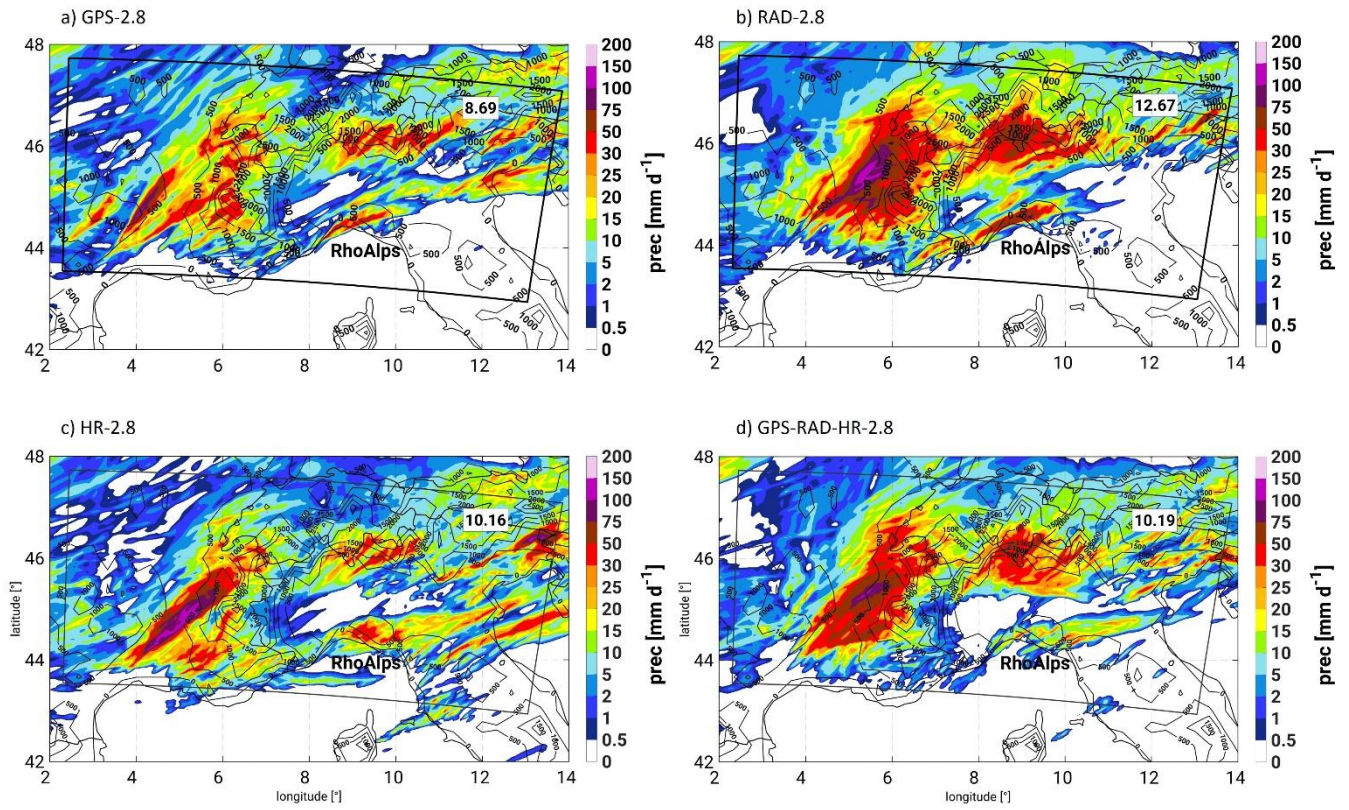
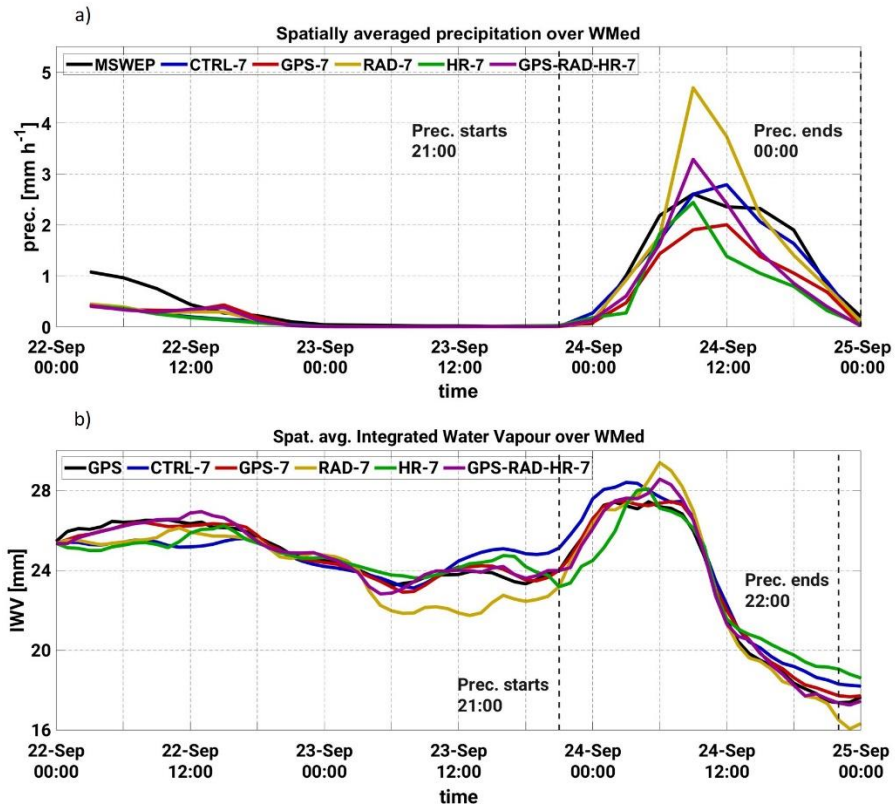


Figure S1: As Fig. 4 in the main paper but for the 7 km simulations.



**Figure S2:** As Fig. 4 in the main paper but for the 2.8 km simulations.



15 **Figure S3: Temporal evolution of spatially averaged precipitation (a) and IWV at the location of the GPS stations (b) over investigation area (RhoAlps). As Fig 6.a and 7 respectively in the main paper but for the 7 km simulations.**



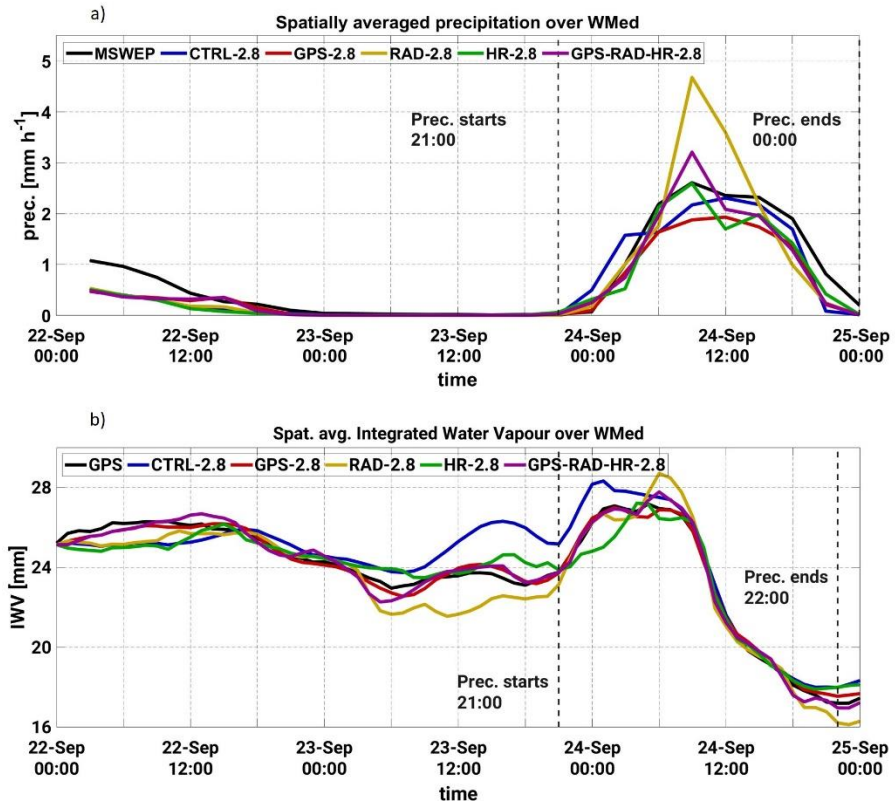


Figure S4: Temporal evolution of spatially averaged precipitation (a) and IWV at the location of the GPS stations (b) over investigation area (RhoAlps). As Fig 6.a and 7 respectively in the main paper but for the 2.8 km simulations.

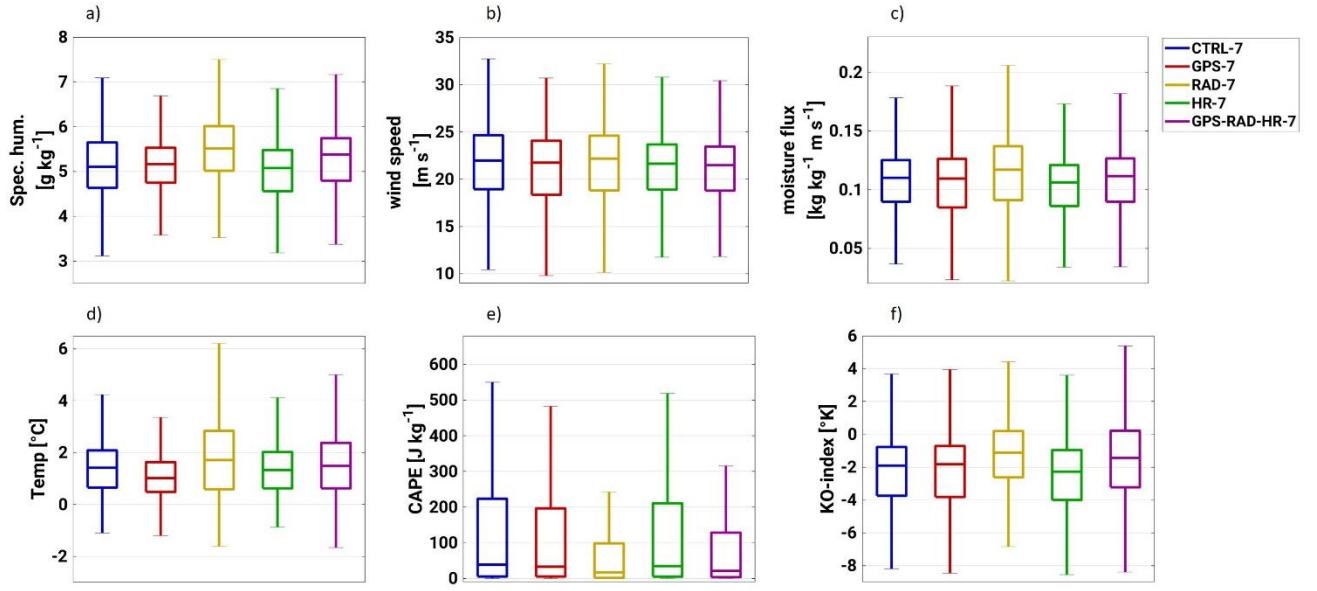
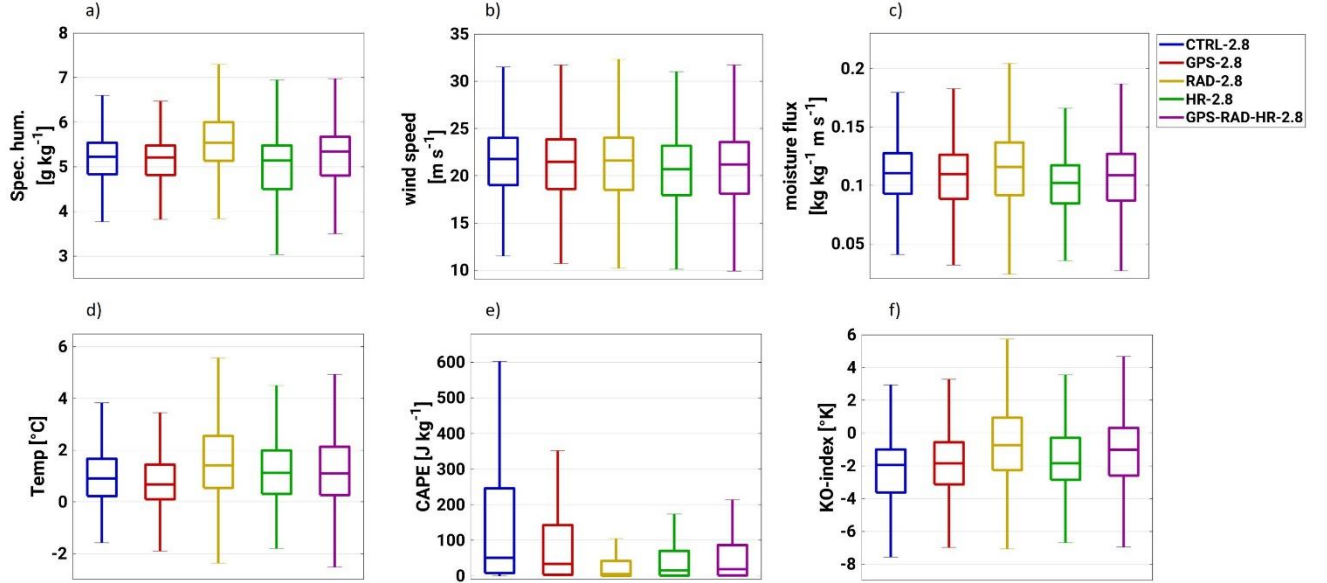


Figure S5: As Fig. 9 in the main paper but for the 7 km simulations.



25 Figure S6: As Fig. 9 in the main paper but for the 2.8 km simulations.