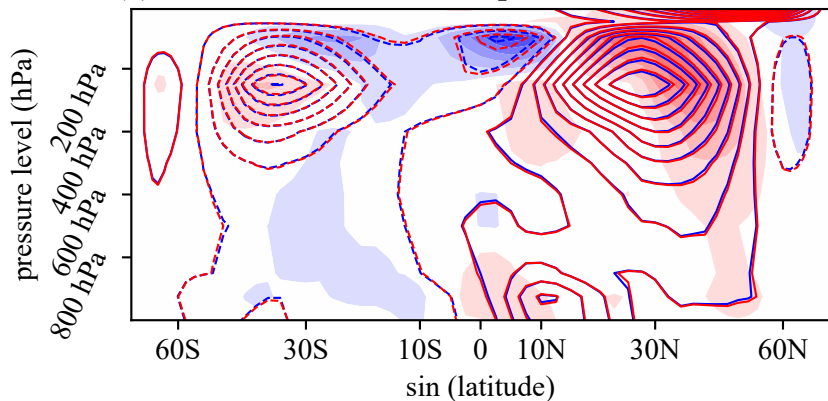
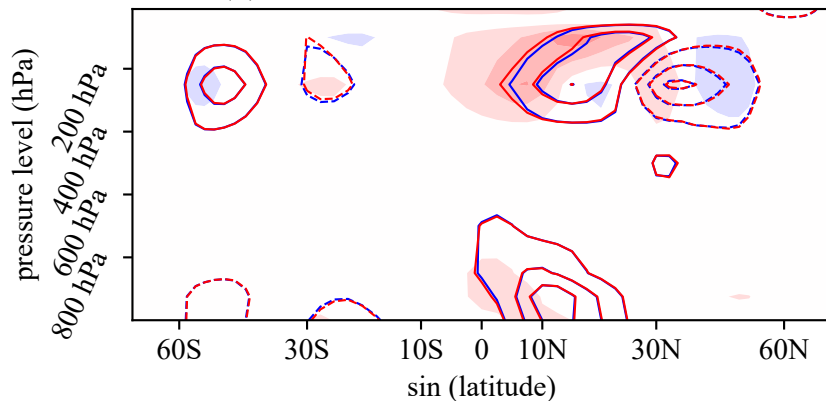


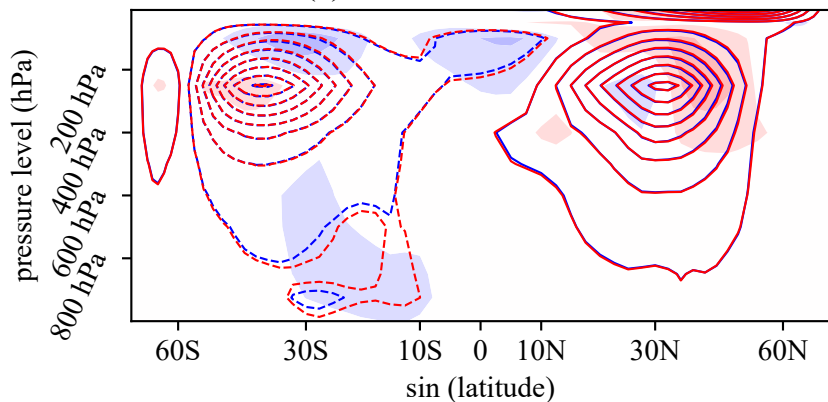
(a) Winter meridional transport of zonal momentum



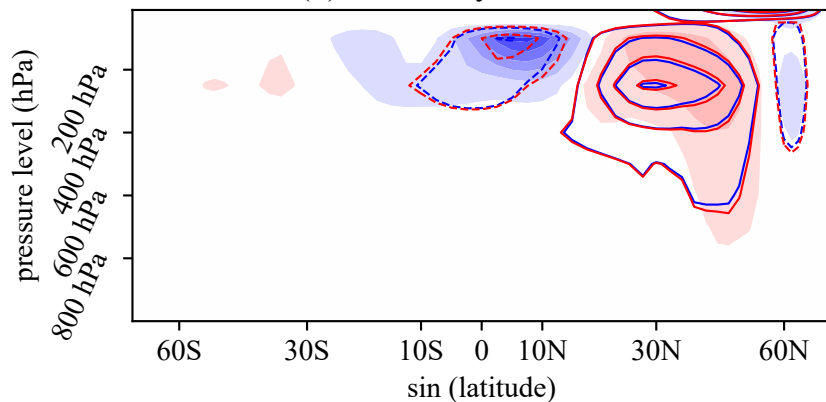
(b) Mean meridional circulation term



(c) Transient eddies term



(d) Stationary eddies term



-22.5 -19.5 -16.5 -13.5 -10.5 -7.5 -4.5 -1.5 1.5 4.5 7.5 10.5 13.5 16.5 19.5 22.5

Meridional transport of zonal momentum difference ($10^6 \frac{m^2}{s^2}$)