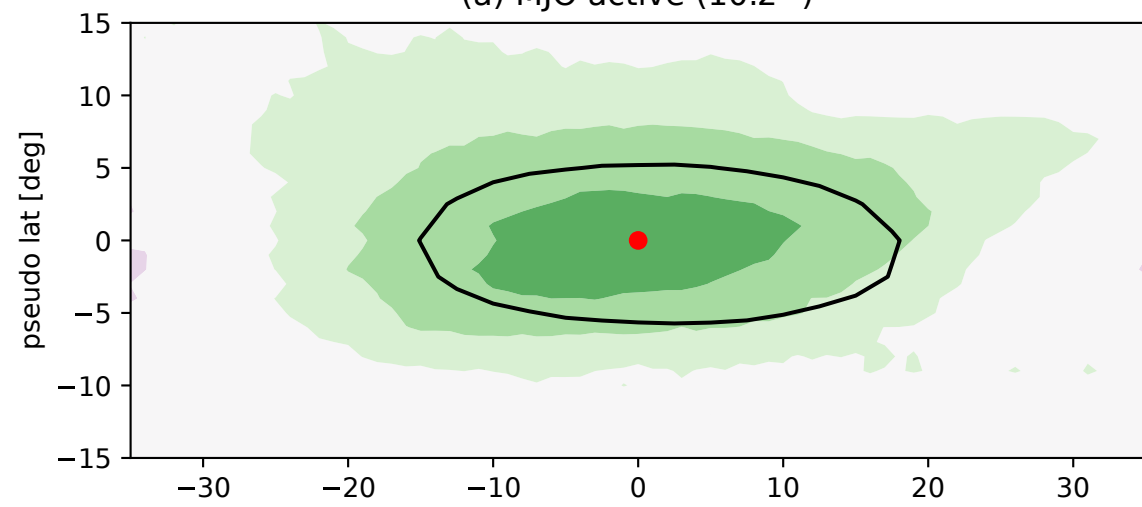
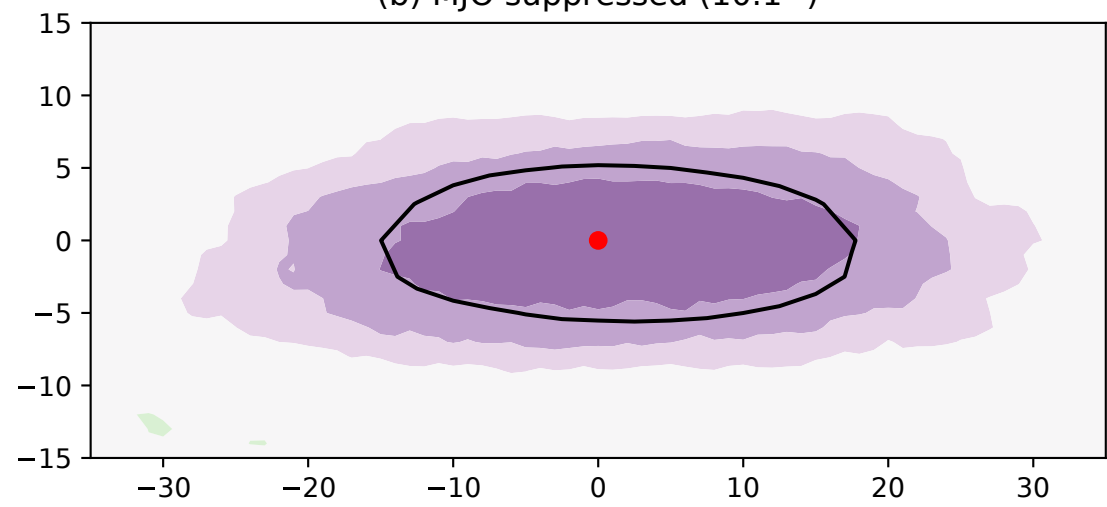


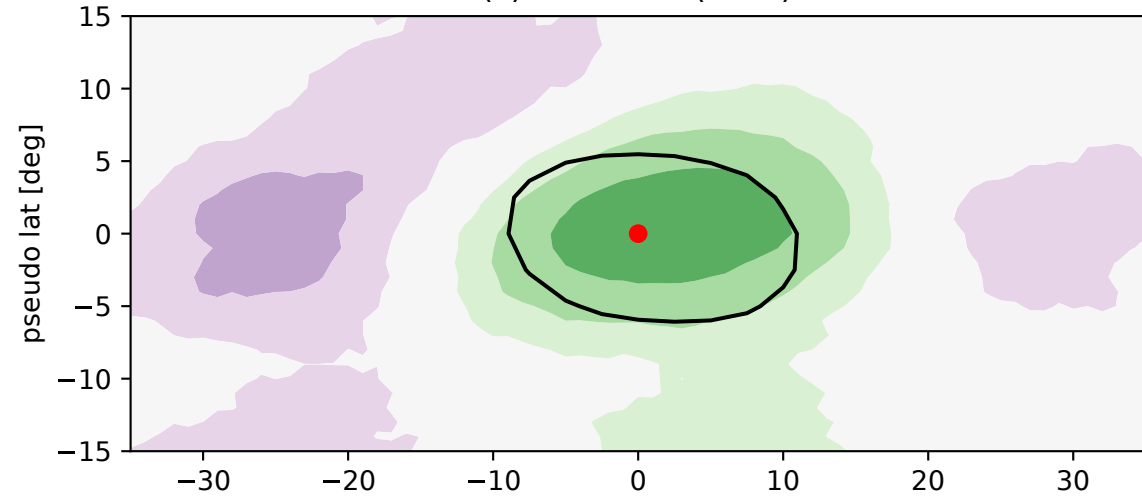
(a) MJO active (10.2°)



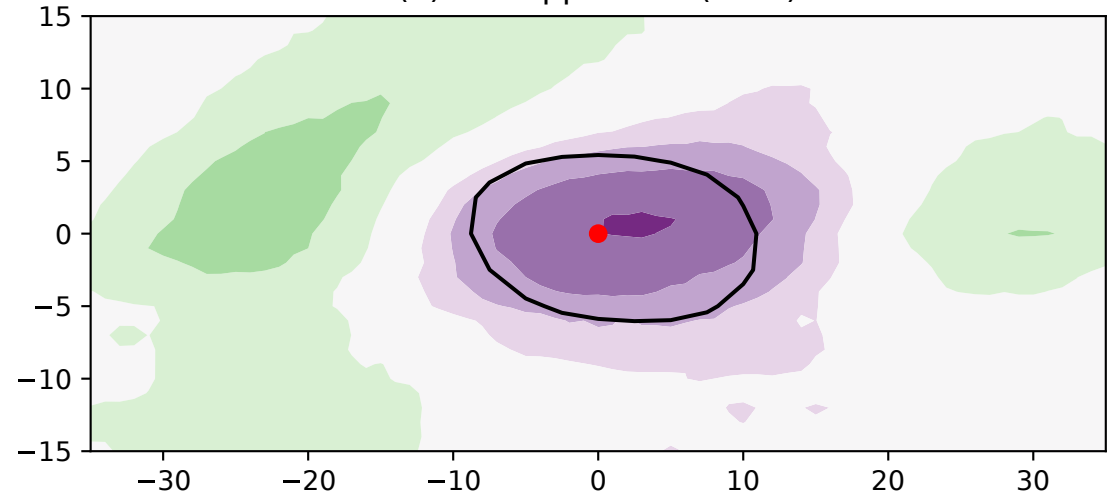
(b) MJO suppressed (10.1°)



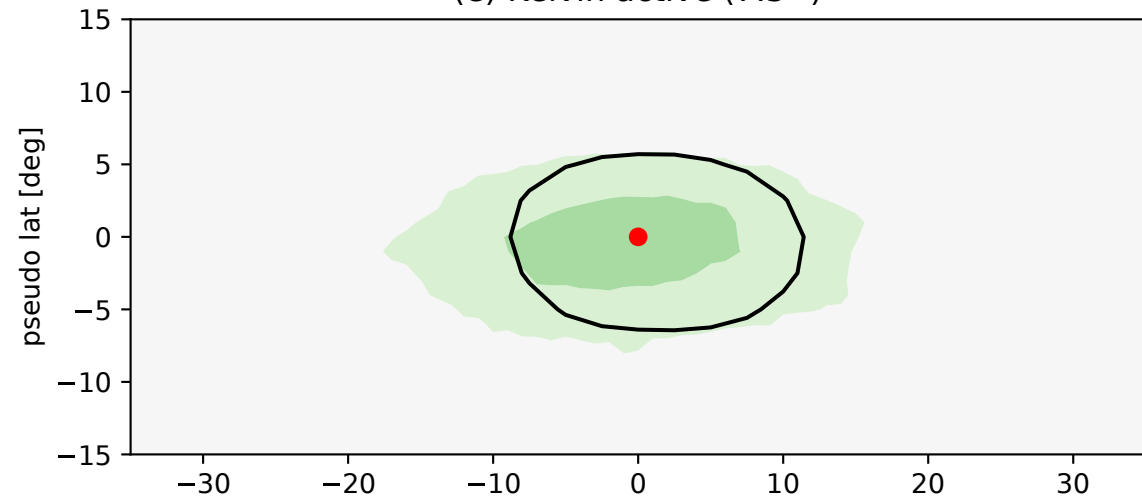
(c) ER active (9.0°)



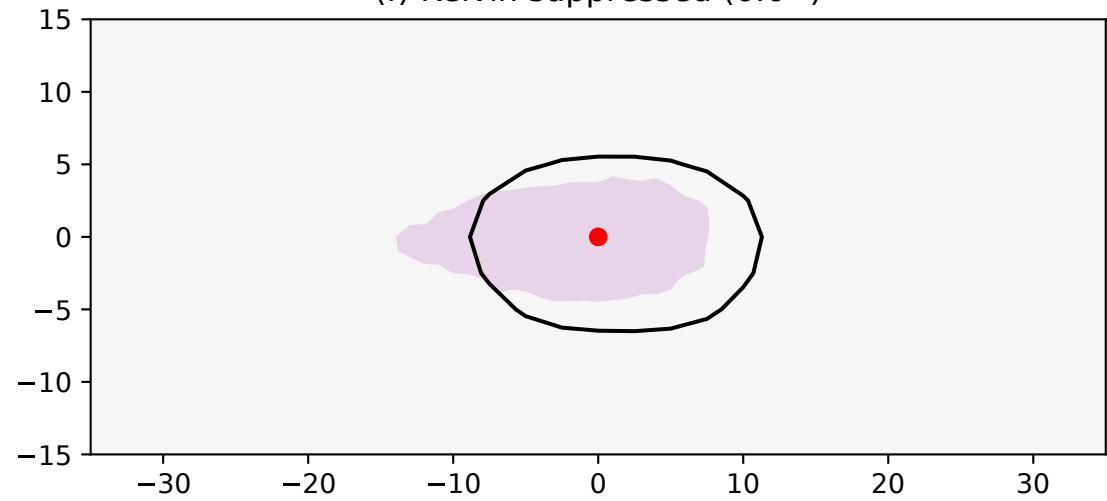
(d) ER suppressed (8.9°)



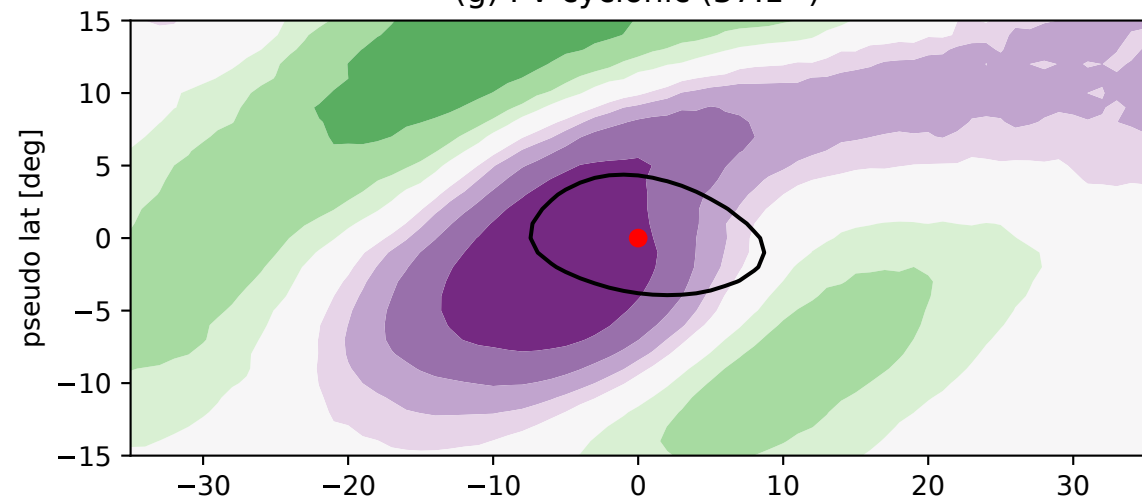
(e) Kelvin active (7.3°)



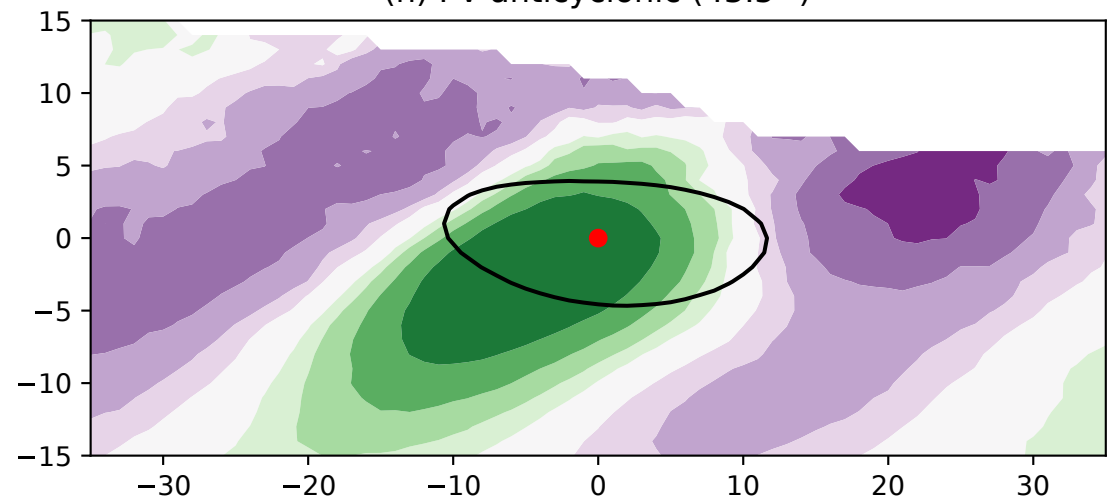
(f) Kelvin suppressed (6.6°)



(g) PV cyclonic (37.1°)



(h) PV anticyclonic (43.5°)



(i) Monsoon LPS (18.2°)

