

Stratospheric intrusion depth and its effect on surface cyclogenetic forcing: An idealized PV inversion experiment

Deleted: cyclogenesis

Michael A. Barnes^{1,2}, Thando Ndarana², Michael Sprenger³ and Willem A. Landman²

¹ Marine Research Unit, South African Weather Service, Cape Town, South Africa

² Department of Geography, Geoinformatics and Meteorology, University of Pretoria, Pretoria, South Africa

³ Institute for Atmospheric and Climate Science, ETH Zurich, Zurich, Switzerland

Correspondence to: Michael A. Barnes (michael.barnes@weathersa.co.za)

Abstract. Stratospheric intrusions of high potential vorticity (PV) air are well-known drivers of cyclonic development throughout the troposphere. PV anomalies have been well studied with respect to their effect on surface cyclogenesis. A gap however exists in the scientific literature describing the effect that stratospheric intrusion depth has on surface cyclogenetic forcing. Numerical experiments using PV inversion diagnostics reveal that stratospheric depth is crucial in the intensity of cyclonic circulation induced at the surface. In an idealised setting, shallow, high-PV (large negative PV) intrusions (above 300hPa) resulted in a marginal effect on the surface, whilst growing stratospheric depth resulted in enhanced surface pressure anomalies and surface cyclonic circulation. It is shown that the height above the surface that intrusions reach is more critical than the vertical size of the intrusion when inducing cyclonic flow at the surface. This factor is however constrained by the height of the dynamical tropopause above the surface. The width of the stratospheric intrusion is an additional factor, with broader intrusions resulting in enhanced surface cyclogenetic forcing.

Deleted: the amount of

Deleted: from a Southern Hemispheric perspective

Deleted: in the amount

Deleted:

Deleted: anomalous

1 Introduction

Potential vorticity (PV) has been well established as a highly useful and important parameter within dynamical meteorology (Hoskins et al. 1985). The usefulness of a PV framework for both operational and academic meteorological analyses is primarily drawn from two characteristics of PV. The first is the fact PV is conserved for adiabatic and frictionless flow (Hoskins et al. 1985; Holton and Hakim 2013). The second of these characteristics is the invertibility of PV (e.g. Røsting and Kristjánsson 2012). PV inversion, under suitable balance and boundary conditions, allows for the calculation of other meteorological parameters such as pressure and wind velocity as a result of a distribution of PV (Davis 1992b; Lackmann 2011). Kleinschmidt (1950) introduced the initial ideas of PV invertibility for specific cases, attributing circulation patterns in the low-levels to an upper-level PV anomaly and introducing the idea of deducing wind, pressure and temperature fields from PV distributions. PV invertibility became more refined and generalised through the development of quasi-geostrophic theory (Charney and Stern 1962) and is still continually being developed and improved on today. PV frameworks and invertibility however only started to be a staple of dynamical meteorological analyses after the landmark paper by Hoskins et al. (1985).

Deleted: down to

Deleted: These ideas

Deleted: which

Deleted: are

PV invertibility has allowed for the study of different meteorological phenomena such as cyclogenesis from a PV perspective (e.g. Davis and Emanuel 1991). A key principle in PV analyses is the definition of the dynamical tropopause. Traditionally, the tropopause separates the stratosphere, which is highly stratified, from the troposphere (Kunz et al. 2011). The strict definition from a dynamical or PV perspective is based on the gradient of isentropic PV contours (Reed 1955). However, for simplicity, a PV iso-surface is often used. The exact value of PV often differs, however, -1.5 and -2.0 PVU ($1 \text{ PVU} = 10^6 \text{ K m}^2 \text{ s}^{-1} \text{ kg}^{-1}$) contours (in the southern hemisphere) are most common (e.g. Lackmann 2011). The identification of the dynamical tropopause is crucial in PV analyses. Tropospheric folds can reveal upper-tropospheric fronts and upper-level PV anomalies (Sprenger et al. 2003). Rossby wave breaking (RWB) is often associated with the isentropic transport of high-PV (large negative values in the Southern Hemisphere) anomalies of stratospheric air into the troposphere (eg. Thorncroft et al. 1993; Ndarana and Waugh 2011; Barnes et al. 2021a). PV inversion shows that these high-PV (large negative) anomalies result in cyclonic flow around the anomaly and cyclogenesis. Theories of high-PV anomalies have been discussed by various authors and basic meteorological texts (Hoskins et al. 1985; Lackmann 2011; Holton and Hakim 2013) and have led to the basic conceptual model for cyclonic PV anomalies as shown in Figure 1. The conceptual model clearly shows the vast cyclonic motion around the upper-level PV anomaly. This also extends to the surface beneath the upper-level anomaly.

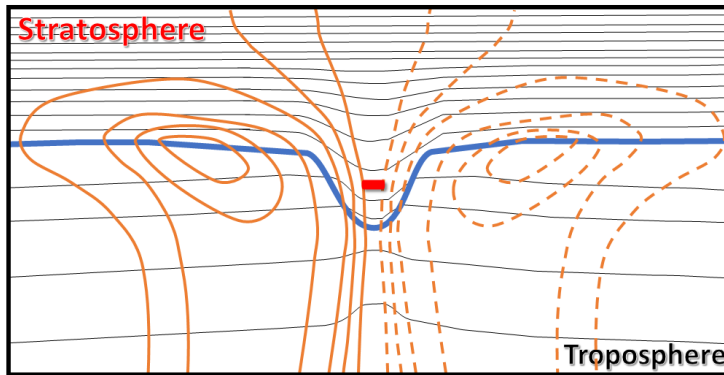


Figure 1: Conceptual model of a cross-section through a high-PV anomaly (negative sign in red) in the Southern Hemisphere [Adapted from Lackmann (2011)]. Black lines represent isentropes, whilst orange lines represent meridional wind velocities (dotted negative, solid positive). The bold blue line represents the dynamical tropopause (a constant PV contour).

Several studies have shown cases of cyclogenesis and their development in the presence of a stratospheric intrusions of high-PV (eg. Davis and Emanuel 1991; Davis 1992a; Iwabe and Da Rocha 2009; Barnes et al. 2021b). Bierly (1997) confirm this link through composite analysis and show the importance of the upper-level intrusion during cyclones initial development. Many studies have focussed on rapid cyclogenesis. A landmark case study shows a tropopause fold that developed in relation to the President's Day cyclone over the east coast of the United States (Uccellini et al. 1985). Rapid cyclogenesis has since

Field Code Changed

Deleted: the

Field Code Changed

Deleted: H

Deleted: are often advected

Deleted: by

Deleted: Rossby wave breaking (RWB)

Deleted: can

Deleted: the

Deleted: s been

Deleted: s

Deleted: represent

Deleted: think

Deleted: PV inversion is the perfect tool to infer how various PV anomalies affect cyclogenesis throughout the troposphere and stratosphere. PV inversion has been used extensively throughout the scientific literature for this purpose.

Deleted: 2021 c

80 been linked to the presence of a PV tower – an alignment of three distinct PV anomalies, in the upper troposphere, lower troposphere and surface (eg. Čampa and Wernli 2012). PV inversion is the perfect tool to infer how various PV anomalies affect cyclogenetic forcing throughout the troposphere and stratosphere and has been used extensively throughout the scientific literature for this purpose. For example, extratropical cyclogenesis has been studied in the context of how different PV anomalies throughout the troposphere interact to influence cyclogenesis (Huo et al. 1999). Through the analysis of case studies,

85 it was shown that the vertical alignment and phase of PV anomalies throughout the troposphere together with interactions between the main upper-level anomaly and smaller anomalies within the upper-level mean flow are important to cyclogenesis. PV inversion has also been used to show the effect of upper-level anomalies in a variety of other extra-tropical (Ahmadi-Givi et al. 2004; Pang and Fu 2017) and tropical (Moller and Montgomery 2000; Arakane and Hsu 2020) settings. Other studies have used PV inversion to diagnose numerical weather prediction (NWP) errors (Brennan and Lackmann 2005) and the effect

90 on downstream precipitation (Baxter et al. 2011). Few studies have used PV inversion in an idealised setting to study the upper-level and stratospheric intrusion depth's influence on cyclogenesis, especially from a Southern Hemispheric point of view. A study of stratospheric depths in relation to surface cyclogenesis was performed in relation to cut-off lows (COLs) by Barnes et al. (2021a). This study was done from a climatological point of view in the Southern Hemisphere. The results show that stratospheric intrusions with a -1.5PVU tropopause associated with COLs detected on the 250hPa pressure level that extend

95 to 300hPa or below, are more likely to result in surface cyclogenesis. The COL extension climatology by Barnes et al. (2021a) was based on real-case reanalysis data. As reanalysis data, climatological averages and composites were used, the isolated effect that the PV intrusions studied by Barnes et al. (2021a) had on surface cyclogenesis was not considered. Studying these processes in an idealised setting will add to our understanding of the effect that stratospheric intrusions have on surface processes.

100 In this study, the effect that the stratospheric intrusion depth has on surface cyclogenetic forcing is studied in an idealised setting. Although the effect that stratospheric intrusions has on surface cyclogenesis is not a new concept (eg. Hoskins et al., 1985), this study examines the effect that stratospheric depth and intrusion characteristics has on surface cyclogenetic forcing in a systematic way. The systematic methodology utilised allows for a correlation between intrusion depths, widths, and intensities with the intensity of cyclogenetic forcing at the surface. Although analytical-type analyses are possible in order to

105 attempt to solve some of the issues addressed in this work, numerical experimentation is chosen due to the complexity of the analyses. The idealised numerical experimentation of PV intrusions aims to enhance our understanding of the effect PV intrusion depth has on surface cyclogenetic forcing as described in basic theoretical texts (eg. Hoskins et al. 1985) and corroborate the findings and hypothesis of the climatology by Barnes et al. (2021a) that deeper intrusions are responsible for deeper COLs and surface cyclone development. A collection of numerical experiments using the power of PV inversion is

110 used. Various experiments using variations in the depth and intensity of the simulated intrusion as well as variations in the dynamical tropopause height are performed. This paper is organised as follows. Section 2 introduces the piecewise PV inversion algorithms used for the experiment as well as the various experimental setups for each test. The results of these tests are presented in Section 3. The results are finally discussed holistically, and conclusions are drawn in Section 4.

Deleted: Here it was shown through

Deleted: both

Deleted: ies

Deleted: 250hPa

Deleted: highly

Deleted: the amount

2 Methodology

Deleted: ¶

2.1 Piecewise PV inversion algorithm

PV invertibility is a mathematical construct. The basic mathematical ideas have been fully described in many textbooks. From Holton and Hakim (2013), quasi-geostrophic PV (q) can be expressed mathematically by:

$$q = \zeta_g + f + f \frac{\partial}{\partial z} \left(\frac{\partial \theta^{-1}}{\partial z} \theta \right) \quad (1)$$

125 with ζ_g the geostrophic relative vorticity, f the Coriolis parameter ($f < 0$ in the Southern Hemisphere), θ the potential temperature and θ^{-1} is the potential temperature of the reference state. The aim of the invertibility principle is to return a variable, say pressure p by inverting (1).

Deleted: tegrating

One of the more popular methodologies for solving the equation (1) is the piecewise PV inversion technique. Various variations of this technique are tested and discussed by Davis (1992). It was found that the various techniques to solve the problem in a piecewise approach were found to produce only small differences near the anomalies studied.

130 In this study, numerical experiments are performed utilising the PV inversion framework of Fehlmann (1997). The set of code is designed for reanalysis datasets to diagnose the effect that PV anomalies have on the surrounding meteorological parameters. In this study, however, we use an extension of these algorithms which allows for more idealised experimentation (Fehlmann 1997; Sprenger 2007). The set of numerical codes solve the Neumann boundary problem for potential vorticity q and the streamfunction ψ from which the wind components can be derived given by the quasi-geostrophic PV

$$q = \frac{\partial^2 \psi}{\partial x^2} + \frac{\partial^2 \psi}{\partial y^2} + \frac{f^2}{\rho} \frac{\partial}{\partial z} \left(\frac{\rho}{N^2} \cdot \frac{\partial \psi}{\partial z} \right) \quad (2)$$

where ρ and N denote the density and Brunt-Väisälä for the reference state respectively. The boundary values of potential temperature at the lower and upper boundaries are given by:

$$g \cdot \frac{\theta^*}{\theta} = f \cdot \frac{\partial \psi}{\partial z} \quad (3)$$

whilst the lateral boundary condition for the u and v wind components are given by

$$u = -\frac{\partial \psi}{\partial y}; v = \frac{\partial \psi}{\partial x} \quad (4)$$

140 Using various partial differential equations and discretisation techniques as shown in detail by Sprenger (2007) and Fehlmann (1997), the above problem can be solved numerically using a piecewise numerical approach. For details about the numerical aspects of the PV inversion framework, based on successive over-relaxations, see Fehlmann (1997) and Sprenger (2007).

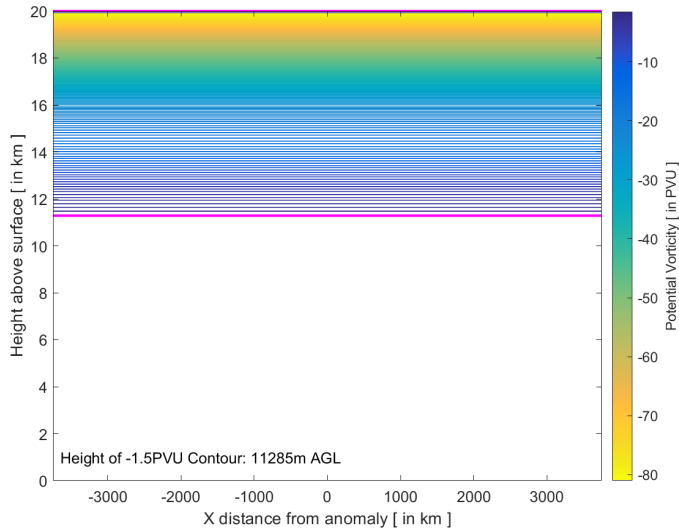
145 The idealised setup tool of Fehlmann (1997) allows the user to create an idealised basic state. This basic state is based on a
user-defined jet stream (height, width, depth and intensity), dynamical tropopause height, static stability (of both the
troposphere and stratosphere), latitude and surface baroclinicity. Potential temperature profiles are constructed from the
available input by so-called “kink” functions (Fehlmann 1997). Once defined and setup, a PV anomaly can be defined and
introduced into the basic state. The code allows the user to define the intensity of the anomaly, vertical and horizontal
150 dimensions and positions.

2.2 Experimental setup

The idealised numerical experimental domain in this study has a zonal dimension of 7500km and a meridional dimension of
5000km with a 25km horizontal resolution. In the vertical, 200 levels are specified with the upper limit at 20000m above
ground level (AGL) and the lower limit on the surface. The vertical levels have a resolution of 100m. The PV inversion
155 algorithm allows the user to specify the surrounding environment for the experiment. In this study, we aim to replicate the
conditions of the climatology presented by Barnes et al. (2021a), where the dynamical tropopause is considered to be the -1.5
PVU iso-surface. The PV inversion algorithm however requires a dynamical tropopause height AGL which corresponds to the
-2 PVU contour. To comply with the convention of the code, the dynamical tropopause is set at a specific height value AGL.
The height of the -1.5 PVU iso-surface (which is the defined dynamical tropopause used in this study) is calculated from the
160 field after the simulation. The static stability parameters are then set by specifying Brunt-Vaisälä frequencies of $0.01s^{-1}$ and
 $0.03s^{-1}$ for the troposphere and stratosphere respectively, such that the -1.5 PVU iso-surface can be considered as the clear
divide between the stratosphere and the troposphere. This is shown by the meridional PV cross-section of the basic state in
Figure 2. In this field, the dynamical tropopause was set to 12500m AGL whilst the resulting -1.5 PVU contour (effective
dynamical tropopause) calculated to be at 11285m AGL.

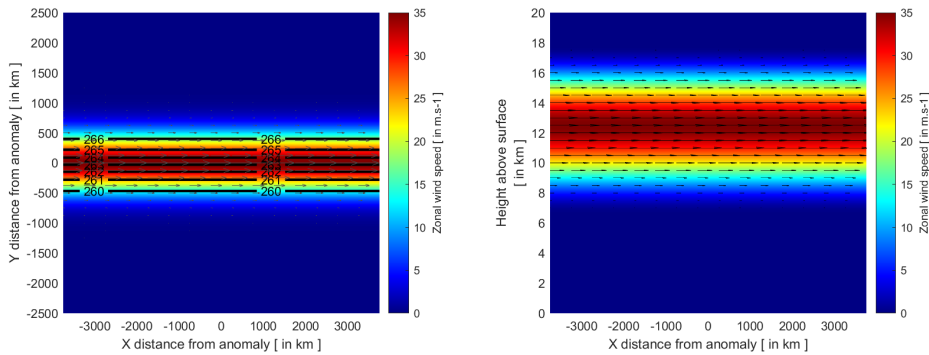
165 The algorithm also allows for the specification of the jet stream in the upper-levels. The jet was centred around the specified
dynamical tropopause with a 4000m stratospheric depth and 6000m tropospheric depth (Figure 3). The westerly jet stream is
specified to be zonal with the horizontal centre of the jet in the centre of the domain and a maximum velocity of $35m.s^{-1}$. Figure
3 (left) shows the zonal wind speed at the height of the specified dynamical tropopause. The Coriolis force is applied using a
constant f -plane approximation. For the entirety of this study, this was deemed to be $42^{\circ}S$. From the above parameters, the
170 algorithm calculates all the basic state meteorological variables. The upper-level pressure field just below the dynamical
tropopause and -1.5 PVU contour (at 10000m AGL) that results from the preparation algorithm is shown in Figure 3. No
meridional flow exists throughout the basic state domain. Additionally, it is pertinent to point out that the surface field is setup
in such a way that no baroclinicity is present. The lack of baroclinicity results in a surface of a constant pressure of 1000hPa
and no surface wind flow. ~~This allows us to completely isolate the processes that are induced by the PV intrusion at the surface.~~
175 The resulting environment from the above and as shown in Figure 2 and Figure 3 is deemed to be the basic state for this study.
Except for the specified dynamical tropopause height, this remains unchanged throughout the study.

Deleted: A barotropic model set up is used in order to



180 Figure 2: PV zonal cross-section through the centre of the domain. **The -2 PVU tropopause was specified at a height of 12500m AGL. The -1.5 PVU contour (highlighted in a thick magenta line) was calculated to be 11285m AGL. A contour interval of 0.5 PVU is used.**

Deleted: T



185 Figure 3: The jet stream of the model setup. Left: The zonal wind speed of the jet stream at the height of given model tropopause (12500m AGL). Pressure contours (in hPa) are overlaid together with zonal wind quivers. Right: A cross-sectional view of the zonal wind associated with the jet stream through the centre of the domain overlaid with zonal wind quivers.

190 The study examines how the meteorological fields changed based on a high-PV anomaly which is forced into the domain. It should be noted that this takes place in the southern hemisphere atmosphere where large negative values of PV are associated with cyclonic motion, contrary to the northern hemisphere where cyclonic motion is associated with large positive values. For the purposes of this study, high-PV values are associated with large negative values of PV. The three-dimensional PV anomaly given by:

$$ANO = \min \left\{ -1.5, - \left(4 \times \left[e^{\frac{-(z-z_{pos})}{z_{size}}} \right] \times \left[e^{\frac{-(y-y_{pos})}{y_{size}}} \right] \times \left[e^{\frac{-(x-x_i)}{x_{size}}} \right] \right) \right\} \quad (5)$$

195 where x, y, z are its horizontal and vertical coordinates, $x_{pos}, y_{pos}, z_{pos}$ are the x, y, z coordinates of the centre of the anomaly and $x_{size}, y_{size}, z_{size}$ are the horizontal and vertical radial dimensions. For this study, the anomaly magnitude is set at standard value -1.5 PVU. Equation (5) results in an anomaly with a minimum PV intensity of -1.5 PVU and which increases outward from the central minimum for a distance $x_{size}, y_{size}, z_{size}$. It is acknowledged that within real-world PV intrusions, there would likely be a decreasing PV gradient within the PV intrusion. However, within the experimental framework the interior of the PV intrusion is kept constant to more easily control the magnitude of the PV intrusion that results from the PV anomaly. An example of this anomaly is shown in the horizontal and vertical profiles in Figure 4. The anomaly shown in Figure 4 has a $x_{size}, y_{size} = 200\text{km}$ resulting in a total maximum width of 400km. The specified $z_{size} = 5000\text{m}$ results in a total vertical size of 10000km. This excludes a halo of increasing values around the specified anomaly. Applying an anomaly such as shown in Figure 4, results in a lowering of the values in the stratosphere. More importantly, the anomaly results in a tongue of high-PV values emerging below the -1.5 PVU contour.

200
205

Deleted:

Deleted: anomaly is a

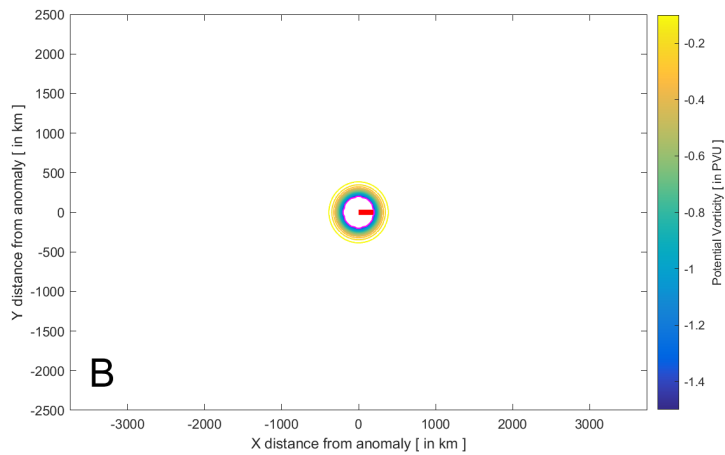
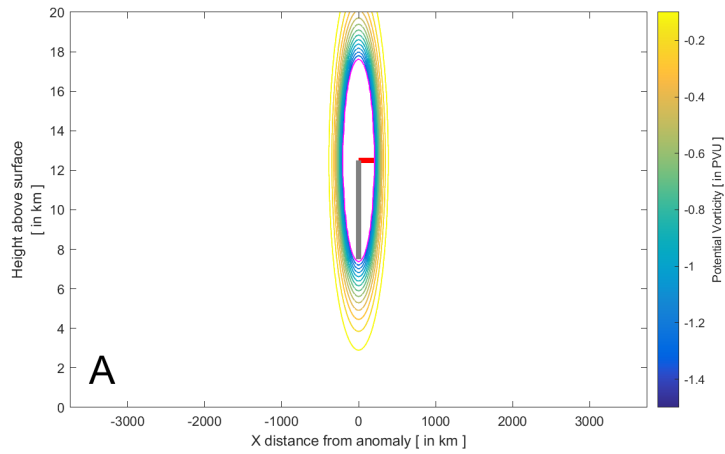
Deleted: the

Deleted: of the anomaly

Deleted: i

Deleted: lower than PV intrusion boundary is defined

Deleted: ,



215 **Figure 4:** Example of a PV anomaly forced into the idealised domain by means of a longitudinal cross section (A) and a horizontal cross-section (B) through the centre of the anomaly. The anomaly has a maximum horizontal width along the minor axis of 400km and a height of 10000m. This excludes the "halo" of decreasing values to zero around it. The red line is defined as the anomaly radial width (x_{size} , y_{size}), whilst the grey line is defined as the anomaly radial height (z_{size}). The anomaly magnitude (in this case -1.5 PVU) is shown by the magenta contour.

220 The control experiment (Experiment 0) is used as a reference. Experiment 0 uses the specified values above, namely a dynamical tropopause height of 12500m, an anomaly radial width of 200km and an anomaly radial height of 5000m. The meteorological changes that occur because of the introduction of the anomaly are then analysed, with special focus on surface cyclogenetic forcing as observed by the induced surface relative vorticity and surface pressure fields. Further, we test the effect of changes to four different parameters with respect to the anomaly and tropopause and their effect on cyclogenetic forcing at the surface. Surface cyclogenetic forcing is measured by means of changes in the induced relative vorticity and surface pressure for each intrusion scenario.

225 The first experiment (Experiment 1) systemically explores the effect of the depth of stratospheric intrusions on the induced cyclogenetic forcing at the surface. The effect that depth of the stratospheric intrusion has on surface cyclogenetic forcing is tested by varying the anomaly radial height. Experiments are performed with anomaly radial height values of lower (2500m) and higher (7500m and 10000m) than the control experiment (Experiment 0, 5000m). Experiment 1 is performed with a constant dynamical tropopause height of 12500m and a constant anomaly radial width of 200km. The varied anomaly radial heights with a constant dynamical tropopause results in tongues of high-PV air extending further towards the surface, as observed in stratospheric intrusions and tropopause folds.

230 Secondly, the effect that the height of the dynamical tropopause above the surface has on surface cyclogenetic forcing is explored in Experiment 2. This experiment is comprised of three separate model experiments with varying dynamical tropopause heights with constant anomaly radial height of 5000m and a constant anomaly radial width of 200km. Dynamical tropopause heights of 15000m and 10000m are used and the results compared to the control experiment (Experiment 0, 12500m). This experiment gives us an indication of whether the depth of the stratospheric intrusion is more important than the proximity of the intrusion to the surface. This notion was hypothesised in Barnes et al. (2021a).

240 The third set of experiments, Experiment 3, reasserts the notion of stratospheric depth versus proximity to the ground. In Experiment 3, only the anomaly radial width is kept constant at 200km. Both the dynamical tropopause height as well as the anomaly radial height are varied simultaneously such that the eventual height of the intrusion AGL is similar. In this experiment we use dynamical tropopause heights of 15000m and 10000m. Testing anomaly radial heights in 500m intervals, we compare experiments that result in the closest stratospheric intrusion height AGL compared to that of Experiment 0.

245 Experiment 4 considers the magnitude of the intruding anomaly and tests how it affects cyclogenetic forcing at the surface. For this experiment, the anomaly description remains the same as in (5). However, all values that are greater than the specified anomaly magnitude are assigned a value equivalent to the anomaly magnitude. A higher (-2 PVU) and lower scenario (-1 PVU) are tested and compared to the control experiment (Experiment 0, -1.5 PVU).

250 Finally, the effect that the horizontal size of stratospheric intrusions has on surface cyclogenetic forcing is tested by varying the anomaly radial width (Experiment 5). Tests with anomaly radial width values of 100km, 200km and 400km are performed with a constant dynamical tropopause height of 12500m and a constant anomaly radial height of 5000m. All the above experiments are also provided in the flow chart shown in Table 1 Error! Reference source not found.

Deleted: to gain an understanding of what the algorithm produces and how the PV anomaly affects the meteorological parameters within the domain...

Deleted: the surface

Deleted: (Experiment 1)

Deleted: amount of

Deleted: surface

Deleted:

Deleted: e second

Deleted: s

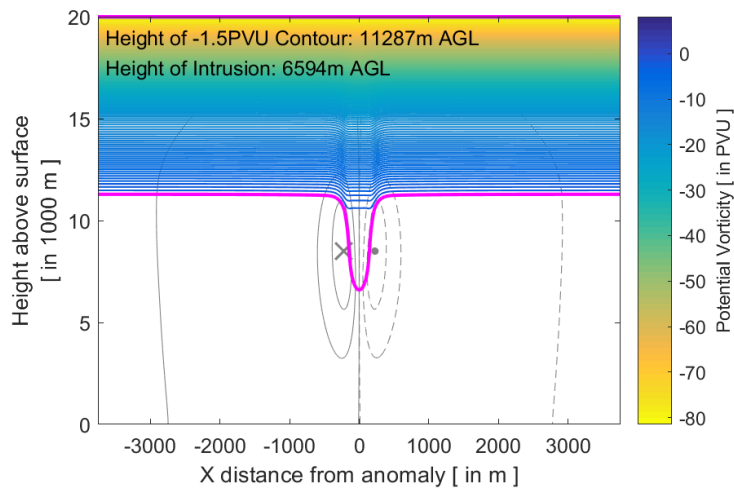
Deleted: experiments

Deleted: with

A drop of 3hPa in surface pressure is observed after the introduction of the stratospheric intrusion. Relative vorticities within the centre of the surface circulation are shown by shaded colours in [Figure 6B](#). The lowest relative vorticity observed within the induced surface circulation is $-0.9 \times 10^{-5} \text{s}^{-1}$.

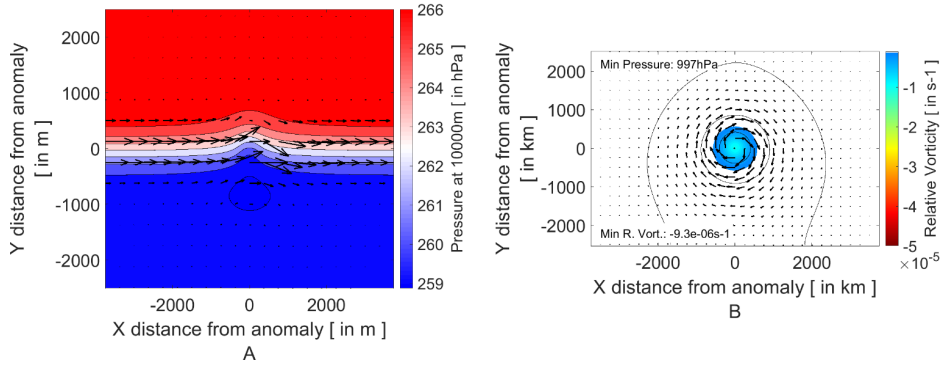
Deleted: Figure 7

310 A similar intrusion was observed in the South Atlantic that resulted in a similar decrease in surface pressure and the development of a surface cyclone (Iwabe and Da Rocha 2009). In that observational study, a similar pressure decrease was seen with the central surface pressure of the surface cyclone decreasing by 4hPa within six hours ([Iwabe and Da Rocha 2009, Table 1](#)).



315 **Figure 5:** Stratospheric intrusion with a radial width of 200km and depth of 5000m from the dynamical tropopause specified at 12500m AGL. Meridional wind velocities are given in 4m.s^{-1} intervals shown by the grey contours. Solid grey contours and the “X” indicate winds moving into the page, whilst dashed grey contours and the “Dot” indicate winds coming out of the page.

Deleted: 6



320 **Figure 6:** A: Upper-level (10000m AGL, 2500m below the experimentally defined dynamical tropopause) pressure field (shaded) together with wind vectors plotted as black arrows.
 B: Surface pressure isobars (black lines) and surface relative vorticity (shaded) together with surface wind vectors plotted as black arrows.

Deleted: 7

3.2 Experiment 1: Varying stratospheric intrusion depth

325 The effect that the depth of the stratospheric intrusions has on surface cyclogenetic forcing is investigated by systematically varying the anomaly radial height (as defined in Section 2.2) of Experiment 0. The results of a selection of these varying stratospheric intrusion depth experiments are shown in Figure 7 and a summary of the full set of experiments are shown in Figure 8. Varying stratospheric intrusion depths are all compared to the control experiment as shown in Experiment 0. For ease of reference and comparison we show this experiment again in Figure 7-A2 and Figure 7-B2 and is highlighted in green in Figure 8.

Deleted: depth

Deleted: Figure 8

Deleted: Figure 9

Deleted: Figure 8

Deleted: Figure 8

Deleted: Figure 9

330 A shallower intrusion depth compared to that in Experiment 0 resulted in weaker (lower velocity) cyclonic rotation around the stratospheric intrusion as shown in the shallow intrusion experiment in Figure 7-A1. Maximum meridional wind velocities are in fact almost half of that of Experiment 0 using half the anomaly depth ($6m.s^{-1}$ in Figure 7-A1 and B1 compared to $11m.s^{-1}$ in Figure 7-A2 and B2). The area of the surrounding troposphere affected by even weak cyclonic flow is also smaller compared to that of the standard, deeper intrusion with a standard value of 5000m (Experiment 0, Figure 7-A2 and B2).

Deleted: Figure 8

Deleted: Figure 8

Deleted: Figure 8

Deleted: Figure 8

335 In comparison, the converse is true for tropospheric intrusions which reached greater depths (as depicted in Figure 7-A3 and Figure 7-A4). Maximum meridional wind velocities of the deeper examples in Figure 7 in fact strengthened to $17m.s^{-1}$ (Figure 7-A3) and $22m.s^{-1}$ (Figure 7-A3) using 7500m and 10000m anomaly depths respectively. The enhanced cyclogenetic forcing is also shown in Figure 8 by the increase in the minimum cross-section relative vorticity (dashed lines). For the purposes of this work minimum cross-section relative vorticity is defined as the lowest value of relative vorticity in the longitudinal cross-section through the PV anomaly. Minimum cross-sectional relative vorticity increases almost linearly with a constant increase in PV anomaly depth, but increase at a slower rate with anomaly depth greater than 8000m. The growth in mid-level

Deleted: Figure 8

Deleted: Figure 8

Deleted: Figure 8

Deleted: Figure 8

Deleted: Figure 8

Deleted: Figure 9

Deleted: This

Deleted: . Minimum cross-sectional relative vorticities however

cyclogenetic forcing is stunted as the anomaly and mid-level jet core stretches closer to the surface. The location of the maximum mid-tropospheric meridional velocity (or mid-level jet core) is located closer to the surface for increased stratospheric intrusion depth.

365 Similar observations can be made when analysing the induced surface flow with changing stratospheric intrusion depth. As expected, shallower intrusions (less than the 5000m used in Experiment 0) induce a weaker circulation occurring on the surface compared to Experiment 0 shown by increased relative vorticities for decreased intrusion depth. A smaller surface pressure anomaly is also induced with the smallest intrusion depth inducing less than 1hPa decrease in the surface pressure field (as seen in [Figure 7-B2](#)).

370 Increasing the depth of the high-PV anomaly conversely induces greater cyclogenetic forcing with a lowering in the central surface pressure anomaly and increased cyclonic rotation at the surface ([Figure 8](#)). The centre of the induced surface pressure anomaly decreases sharply with increasing intrusion depth. The 7500m and 10000m anomaly radial heights (depicted in [Figure 7-3](#) and 4) induce an 8hPa and 12hPa decrease (compared to 3hPa in Experiment 0) in their associated surface pressure respectively. The observational study of *Cape Storm* in Barnes et al. (2021a) showed a decrease of 6hPa on 7 June 2017

375 collocated with a stratospheric intrusion to the 550hPa level. The intrusion, similar to that shown in [Figure 7-A3](#), results in a similar response in the surface pressure. The enhanced cyclonic circulation is also depicted through the increasing relative vorticity present at the surface with increased PV anomaly depth.

The enhanced pressure decreases and cyclonic vorticity induced around deeper intrusions in this idealised framework, echo the findings of Barnes et al. (2021a) who show that, in a climatological sense, deeper intrusions are associated with COLs that

380 extend to the surface. It should however be noted that the study by Barnes et al. (2021a) inherently includes a temporal aspect to the growth and development of surface cyclones induced by intrusions of different depths that this numerical experiment does not. Despite the lack of temporal aspect, it is clear from within this experimental framework that surface cyclogenetic forcing and general tropospheric cyclonic motion is enhanced with intrusion depth. It also emphasises the findings of Barnes et al. (2021a) that COL extension to the surface is a vertically coupled process, with cyclonic flow developing throughout the

385 troposphere as the COL and surface low develop. This set of numerical experiments imply that deeper intrusions are more likely to induce enhanced cyclonic forcing in the surrounding troposphere and therefore result in a COLs extension to the surface.

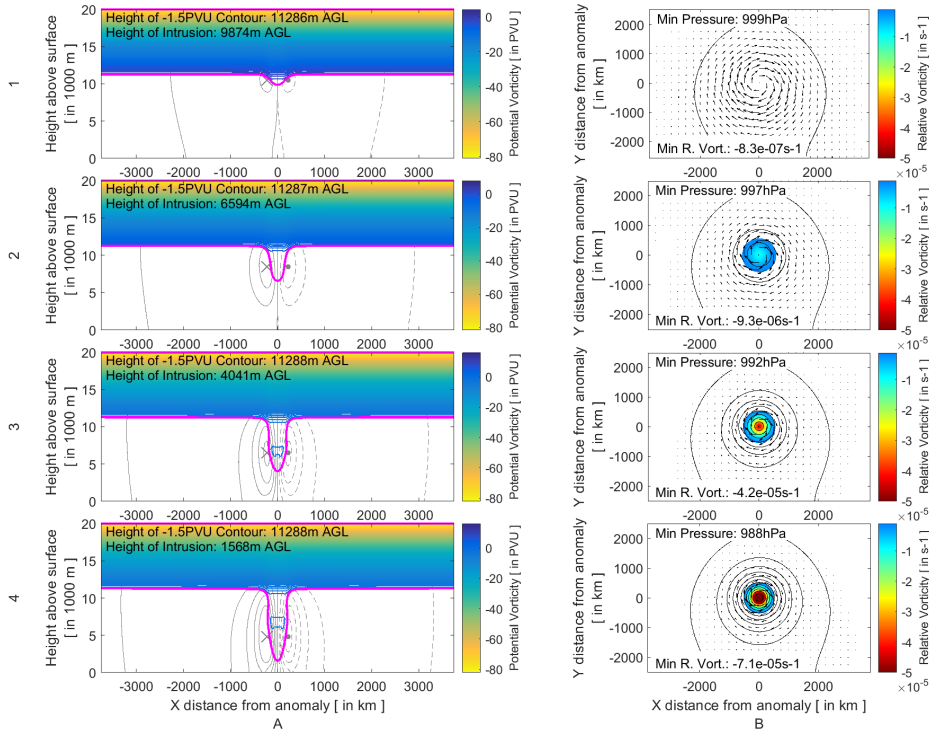
Deleted: Figure 8

Deleted: Figure 9

Deleted: depths

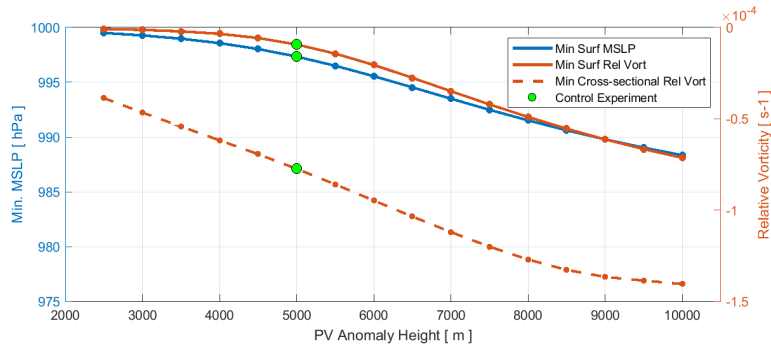
Deleted: Figure 8

Deleted: Figure 8



395 **Figure 2:** A: Longitudinal PV cross-sections through the centre of the forced anomaly. The -1.5 PVU contour (our definition of the dynamical tropopause for this study) is highlighted in by a thick magenta line. Meridional wind velocities are given in $4m.s^{-1}$ intervals shown by grey contours. Positive velocities (into the page) are represented by solid contours whilst negative velocities are represented by dashed contours (out of the page).
 400 B: The effect of the intrusion on the surface pressure and relative vorticity are shown in the right panels. Pressure isobars at a 1hPa contour interval are shown by black lines, whilst relative vorticity is shown by the shading.
 The panels in rows 1-4 represent different varying stratospheric depths introduced into the domain. For this experiment (Experiment 1), radial anomaly depths given to the system are 2500m (row 1), 5000m (row 2), 7500m (row 3) and 10000m (row 4). By convention, in-text figure references refer to the column letter and the row number of the panel referenced (ie B2 refers to the panel in column B and row 2)

Deleted: 8



405

Figure 8: Changes to surface parameters (solid lines) as a function of anomaly radial height (depth of intrusion). The minimum MSLP (blue) and relative vorticity (orange) on the surface pressure level are recorded and plotted. The cross-sectional minimum relative vorticity as a function of anomaly depth is also shown by the dashed line. The results in Experiment 0 are highlighted in green for convenience.

Deleted: 9

410 3.3 Experiment 2: Varying tropopause height with constant intrusion depth

The height of the tropopause is variable both spatially and seasonally (Kunz et al. 2011). In the austral summer months the meteorological equator is situated south of the geographical equator resulting in a raised tropopause, with the converse being true for the austral winter months. Additionally, the temperature differences between equator and the poles result in the dynamical tropopause being situated closer to the surface in the higher latitudes compared to the lower latitudes (Kunz et al. 2011). Barnes et al. (2021a) showed a distinct seasonality and latitudinal discrepancy in the number of COLs that extend to the surface, linking this variability to the height of the tropopause. Conditions with a lower tropopause (as found in winter and closer to the poles) tend to produce a greater number of COL extensions in the Southern Hemisphere than when the tropopause is further from the surface (in the summer months and closer to the equator).

415

Deleted: Lower tropopausal c

The dependence of tropopausal height on surface cyclogenetic forcing is explored here in a systemic and idealized way by changing the height of the specified tropopause with a constant anomaly radial height of 5000m. The constant anomaly radial height simulates stratospheric intrusions of similar vertical extent (radial height) in different tropopause height regimes. The standard 12500m tropopause height AGL (as seen in Experiment 0) are depicted by a higher scenario (tropopause height of 15000m) and a lower scenario (tropopause height of 10000m) in Figure 9. A full set of experiments comprising of various higher and lower tropopause scenarios and the induced cyclogenetic forcing are shown in Figure 10. It should be noted that the tropopause height stipulated and the resulting -1.5 PVU contours (which denotes our definition of the dynamical tropopause) do differ (see Section 2.2). The actual dynamical tropopause heights (-1.5 PVU contours) for the mid (Experiment 0), high (15000m tropopause) and low scenarios (10000m tropopause) are situated at 11287m, 13384m and 9172m AGL.

420

Deleted: "intensity"

425

Deleted: Figure 10

Deleted: Figure 11

Figure 9A depicts the PV intrusions in the mid, high and low tropopause scenarios. The decreasing height of the dynamical tropopause results in the stratospheric intrusions effectively being in closer proximity to the surface but with no change in the vertical extent (radial height) of the intrusion. The difference in tropopause height results in different heights of the associated stratospheric intrusion AGL reaching 6594m (Experiment 0), 8776m (higher scenario) and 4332m AGL (lower scenario) respectively. The resulting effects on the surrounding troposphere and surface are shown in Figure 9 and Figure 10. Similarly to Experiment 1, Figure 9A shows the differences in the induced cyclonic circulation around the PV anomaly in the upper-levels. The increasing dynamical tropopause height, even with a similar vertical PV intrusion extent (radial height), has a similar effect on the circulation around the anomaly as seen in Experiment 1. The enhanced mid-tropospheric circulation is readily seen in the decreasing minimum cross-sectional relative vorticities from the highest tropopause to the lowest tropopause scenario (Figure 10). Minimum cross-sectional relative vorticities show a decrease of about $4 \times 10^{-5} \text{s}^{-1}$ in the minimum cross-sectional relative vorticity between the high and low tropopause height scenarios. Maximum meridional velocities increase from 9m.s^{-1} in the highest tropopause scenario (Figure 9A1) to 12m.s^{-1} in the control (Experiment 0) or intermediate scenario (Figure 9A2). The lowest tropopause scenario (Figure 9A3) contains a maximum meridional velocity of 15m.s^{-1} . The increased vorticity from one scenario to the next is not a function of the intensity of the anomaly since the amplitude of the anomaly is kept constant in Experiment 2. With no difference in the PV environment, it follows from (1) that

$$\zeta_g + f = q - f \frac{\partial}{\partial z} \left(\frac{\partial \theta^{-1}}{\partial z} \theta \right) \quad (6)$$

A dynamical tropopause situated closer to the surface is also found on a higher-pressure contour compared to that of the dynamical tropopause situated further away from the surface. From the high, intermediate and low tropopause scenarios in Figure 9, the dynamical tropopause is situated at around the 110hPa, 175hPa and 260hPa pressure levels respectively. Crucially, the dynamical tropopause coincides with a potential temperature in the range of 330-350K for all three scenarios. These factors result in a more tightly packed potential temperature gradient in the troposphere (high static stability) in the scenario where the dynamical tropopause is closer to the surface compared to the higher tropopause scenario. Therefore, for a PV (q) intrusion of the same vertical extent, the increased static stability resulting from the lower dynamical tropopause will result in a decrease in the relative vorticity value on the left-hand side of (6). Since we are dealing with negative vorticity in and around the anomaly, the decrease in relative vorticity corresponds to increased rotation around the PV anomaly. The converse argument can of course be made for the scenario in which the tropopause is situated further away from the surface, decreasing static stability and decreasing the cyclonic motion around the anomaly as a result.

Figure 10 shows that the cyclogenetic forcing induced increases at the surface with decreased tropopause height. This is seen by both the sharp decrease in pressure and relative vorticity at the surface. The intermediate scenario (Experiment 0) with an intrusion depth of 6594m resulted in a 3hPa drop in surface pressure. In contrast, with the same vertical intrusion depth, the intrusions from the higher dynamical tropopause (Figure 9A1 and A2) induce only a 1hPa decrease in the surface pressure. A stark contrast is seen in the scenario from the dynamical tropopause situated closer to the surface (Figure 9A3 and A3). The

Deleted: Figure 10

Deleted: "intensity"

Deleted: Figure 10

Deleted: Figure 11

Deleted: Figure 10

Deleted: intensity or size

Deleted: Figure 11

Deleted: Figure 10

Deleted: Figure 10

Deleted: Figure 10

Deleted: rotation

Deleted: Figure 10

Deleted: intensity

Deleted: left hand

Deleted: Figure 11

Deleted: amount of

Deleted: Figure 10

Deleted: Figure 10

lower tropopause scenario resulted in a doubling of the pressure decrease at the surface (6hPa) compared to Experiment 0 (3hPa). Enhanced cyclonic circulation is induced at the surface in the lower tropopause scenario, as shown by an increase in the cyclonic surface relative vorticity.

485 The results of Experiment 2 clearly show that the effective height of the intrusion AGL is a factor in the induced surface cyclogenetic forcing. With the same intrusion vertical depth, the experiments with lower intrusion height AGL result in more intense lowering of the surface pressure. It should be noted that these tests were also repeated with different vertical depth of intrusions by using different anomaly radial heights of 2500m and 7500m (not shown). The tests show a similar result where intrusions associated with the higher tropopause result in a decreased cyclogenetic forcing than those associated with the lower tropopause.

Deleted: Additionally, e

Deleted: .

Deleted: In addition, surface circulation is enhanced with

Deleted: amount of

Deleted: amount of

Deleted: that is induced

Deleted: lesser amount of

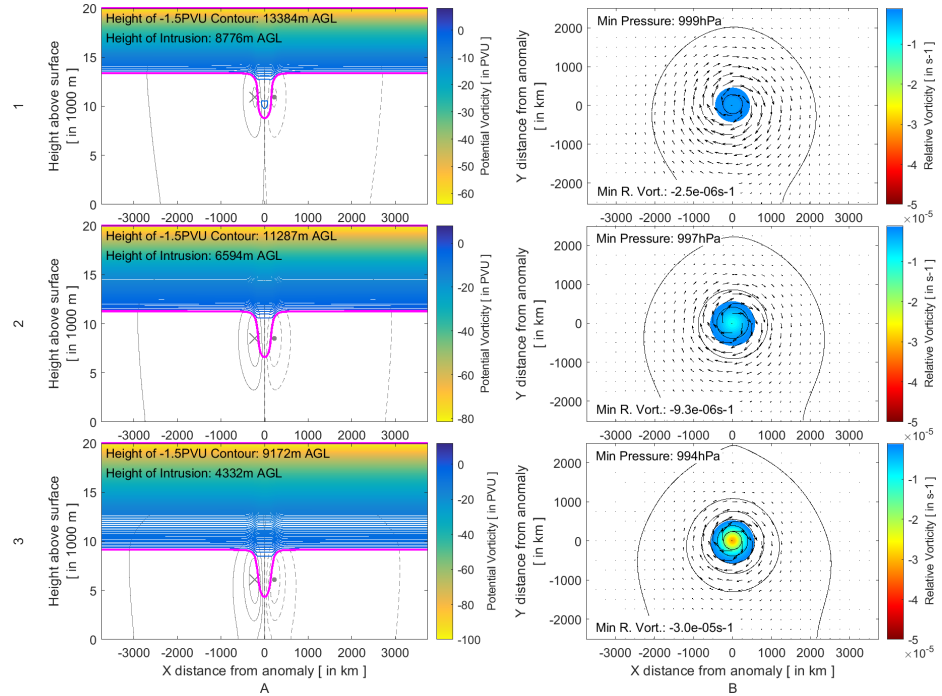


Figure 9: Same as in Figure 7, with the exception that in this case the anomaly radial height is kept constant at 5000m with varying tropopause heights of 15000m (row 1), 12500m (row 2), as in Experiment 0) and 10000m (row 3).

Deleted: 10

Deleted: Figure 8

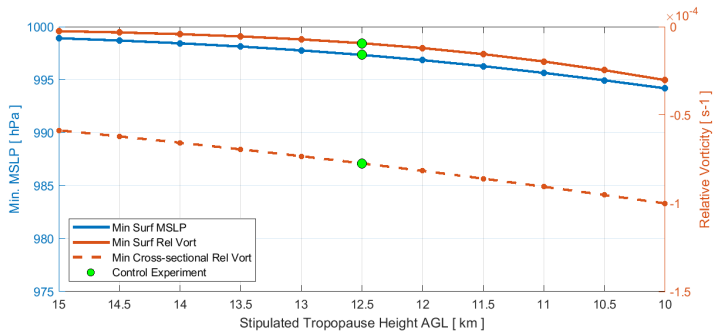


Figure 10: Similar to Figure 8 but for Experiment 2 (varying tropopause height experiments) with tropopause height AGL shown on the x-axis

Deleted: 11
Deleted: Figure 9

3.4 Experiment 3: Constant intrusion height from varying tropopause height and intrusion depth

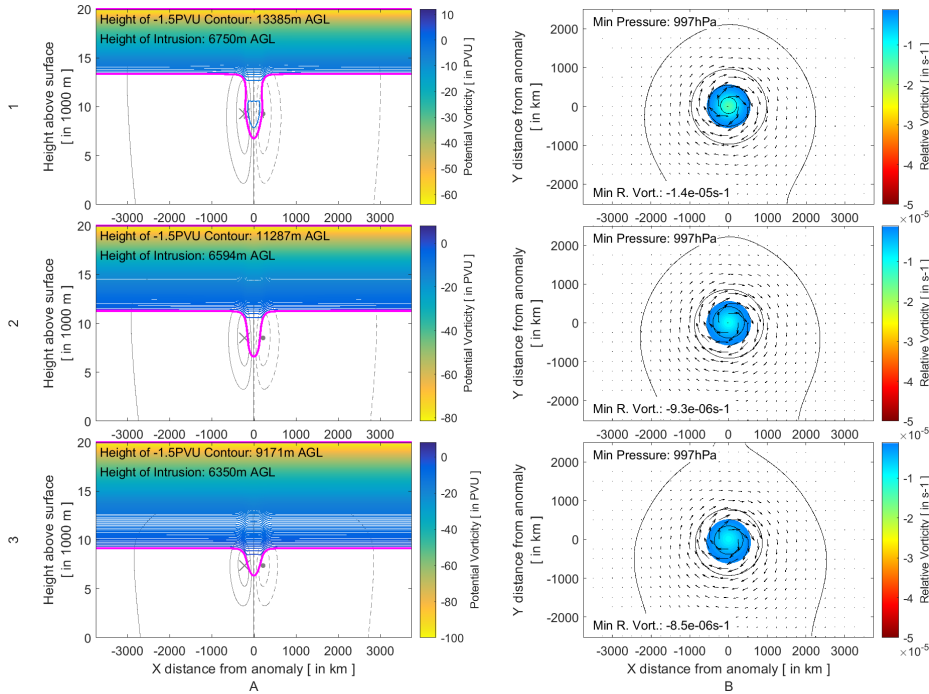
The results in Experiments 1 and 2 imply that the proximity of a stratospheric intrusion to the surface has a larger impact on inducing deeper and enhanced cyclonic circulation at the surface than the vertical extent or size of the intrusion itself. This was also hypothesized by Barnes et al. (2021a) with respect to COL vertical extensions. In order to confirm this concept, anomalies are created such that they extend to a similar height AGL from a varying tropopause height and compared to Experiment 0 (Figure 11_A2 and B2). In this case anomalies with radial heights of 7000m, 5000m and 3500m were introduced into the fields with tropopause heights of 15000m, 12500m and 10000m AGL respectively. The resulting intrusions heights AGL were calculated to be at 6750m, 6594m and 6350m AGL respectively. All three of these intrusions induce cyclonic motion around the anomaly of similar vertical extent (radial height), with maximum meridional wind velocities between 11-12m.s⁻¹. The intrusions also all induce a similar surface level pressure deepening resulting in about a 3hPa surface central pressure drop.

Deleted: Figure 12

Deleted: intensity

Some small, but noticeable differences can however be seen between the different scenarios in Experiment 3. The larger intrusion emanating from a higher dynamical tropopause (Figure 11_A1), results in a slightly deeper penetration of the high-velocity core around the simulated anomaly compared to anomalies with lesser vertical extent (radial height) in Figure 11_A2 and A3. In Figure 11_A1 the 4m.s⁻¹ contour extends to a depth 1000m deeper than in Figure 11_A2 and A3. The effect of this is also noticeable on the surface. Relative vorticities on the surface increase slightly with intrusion vertical extent (radial height) with a decrease of 3×10^{-6} s⁻¹ from the lowest tropopause (small anomaly vertical extent) scenario in Figure 11_A3 to the highest tropopause (large anomaly vertical extent) in Figure 11_A1. A major difference between these scenarios is the presence of a -2PVU anomaly within the intrusion in Figure 11_A1 that does not appear in Figure 11_A2 or A3. This is an artefact of the basic state setup but could be influencing and enhancing the additional rotation at the surface. The influence of anomaly magnitude will be further investigated in Experiment 4.

Deleted: Figure 12
Deleted: lower intensity
Deleted: Figure 12
Deleted: Figure 12
Deleted: Figure 12
Deleted: vertical intensity
Deleted: n
Deleted: vertical intensity
Deleted: Figure 12
Deleted: intensity
Deleted: Figure 12
Deleted: Figure 12
Deleted: Figure 12



545 **Figure 11:** Same as in [Figure 7](#) but with variable anomaly radial heights such that the height of the stratospheric intrusions AGL are similar from varying tropopause heights of 15000m (row 1) and 10000m (row 3). Experiment 0 is given in row 2 for ease of reference.

3.5 Experiment 4: Varying anomaly magnitude

550 Experiment 3 brings forth the question of the magnitude of the stratospheric intrusion with respect to its effect on the cyclonic circulation at all tropospheric levels around the anomaly. Experiment 4 tests this effect by changing the magnitude of the intrusion, ie. By varying the anomaly amplitude. A lower (-1.0 PVU) and higher (-2.0 PVU) scenario are tested and shown in [Figure 12](#). For ease of reference, the -1.0 PVU contour is also plotted as a dashed magenta line in [Figure 12](#). As our definition of the tropopause continues to be -1.5PVU, the resulting intrusion of the lower scenario is very shallow, but does contain a small anomaly close to the depth of Experiment 0 ([Figure 12_A2](#)). [Figure 13](#) shows that the magnitude of the intrusion has some effect on the mid-tropospheric cyclogenetic forcing. Minimum cross-sectional relative vorticity decreases by $3 \times 10^{-5} \text{s}^{-1}$ from the low to high anomaly amplitude scenarios, whilst the maximum meridional velocity decreases by 1m.s^{-1} around the

Deleted: 12

Deleted: Figure 8

Deleted: intensity

Deleted: Figure 13

Deleted: Figure 13

Deleted: Figure 13

Deleted: Figure 14

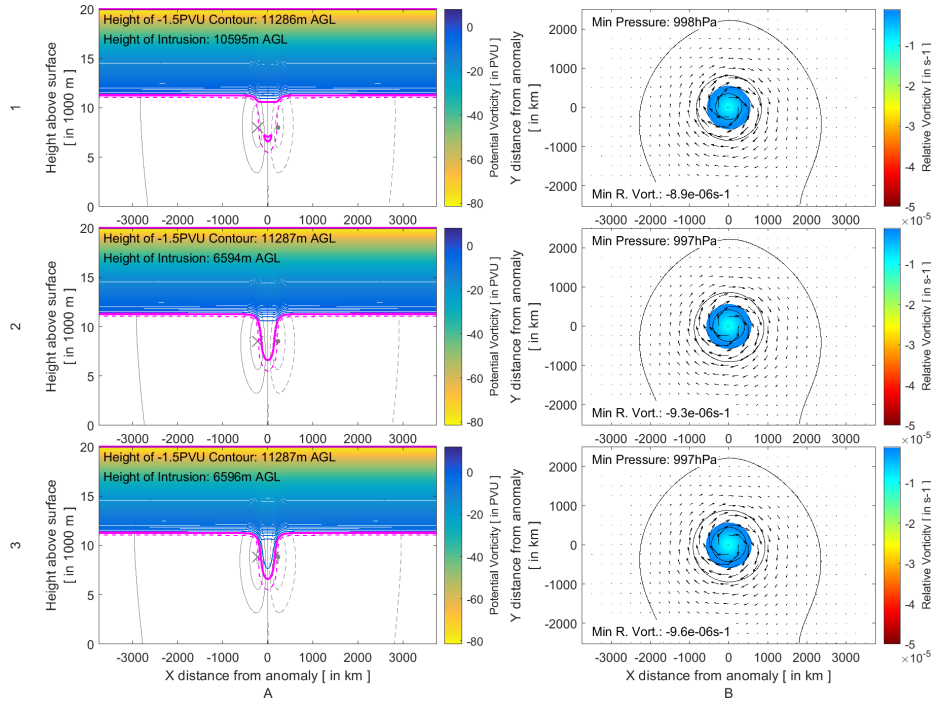
565 anomaly. Anomalies of all magnitudes tested induce similar cyclogenetic forcing upon the surface. Both the induced surface pressure and relative vorticity are comparable throughout the scenarios tested.

The intrusion created as a result of this experimental setup are relatively flat anomalies with no gradient within the anomaly itself. As such the PV gradient structure between the different magnitude anomalies will be relatively similar between each of the scenarios and therefore will have little effect on the induced cyclonic circulation around the anomaly. In the real-world atmosphere, the anomaly is likely to have more gradient within the intrusions with a specified contour boundary. However, it 570 is unlikely the maximum PV value within an intrusion would be an extreme PV value that is far greater than the PV value of the dynamical tropopause (see examples in Sprenger 2007; Barnes et al. [2021b](#)). The result therefore implies that it is less crucial which dynamical tropopause PV value an intrusion is analysed with but rather the geometric characteristics of the PV contour itself. The results of Experiment 4 reaffirm the findings in Experiment 3, ie. That the vertical [extent](#) of the stratospheric intrusion could play a more vital role in affecting surface circulation than the magnitude of the PV intrusion.

575

Deleted: 2021c

Deleted: intensity



580 **Figure 12:** Same as in Experiment 0 with varying anomaly magnitudes of -1.0 PVU (row 1) and -2.0 PVU (row 3). Experiment 0 (with an anomaly magnitude of -1.5 PVU) is shown in row 2. In addition to the -1.5 PVU contour (thick magenta line), the -1.0 PVU contour is also provided for context by a dashed magenta line.

Deleted: 13

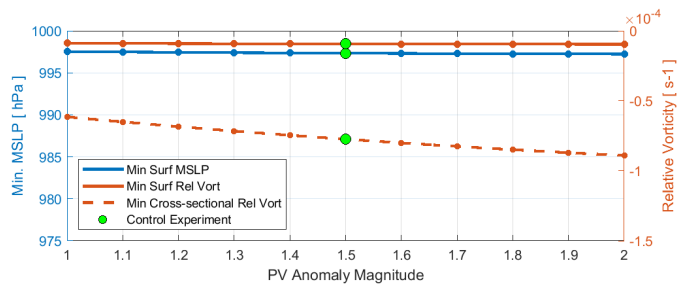


Figure 13: Same as in Figure 8 but for Experiment 4 (varying stratospheric intrusion magnitude experiments)

Deleted: 14

Deleted: Figure 9

585 3.6 Experiment 5: Varying anomaly horizontal width

RWB events, which are associated with isentropic transport of stratospheric air into the troposphere, have been classified into 4 distinct categories, namely cyclonic equatorward breaking (LC2), cyclonic poleward breaking (P1), anticyclonic equatorward breaking (LC1) and anticyclonic poleward breaking (P2) (Thorncroft et al. 1993; Peters and Waugh 1996). These different types of RWB are associated with differing characteristics of the isentropic PV filaments produced and therefore differences in the geometric characteristics of the PV intrusions and the weather patterns they produce. Elongated, thin filaments of stratospheric air are produced by LC1 type breaking events because of the anticyclonic shear on the equator side of the PV structure (Thorncroft et al. 1993). These associated PV filaments eventually roll up and often produce cut-off PV structures. P1 events are also associated with thinner filaments of high-PV air (Peters and Waugh 1996). Similarly to P2 events respectively, LC2 events are associated with broader high-PV streamers which, under the influence of cyclonic shear, wrapping cyclonically and not resulting in cut-offs (Thorncroft et al. 1993). Recent examples of the different breadth of these streamers can be seen in Barnes et al. (2021b) where a thin PV streamer (of $\sim 1^\circ \approx 100\text{km}$) and broader streamer (of $\sim 10^\circ \approx 800\text{km}$) affected and deepened a surface cyclone.

Deleted: drive

Deleted:

The effect that the width of the intrusion has on surface cyclogenesis is tested with a numerical setup similar to that of Figure 4 with varying anomaly radial widths. Selected width experiments are shown in Figure 14 and a summary of the effect of all experiments effect on surface parameters is shown in Figure 15. All stratospheric intrusions were defined such that they reach a similar depth (using a constant 5000m anomaly radial height from the 12500m AGL dynamical tropopause).

Deleted: Figure 15

Deleted: Figure 16

Clear differences in the circulation around the anomaly can be seen in Figure 14A and Figure 15. The thinner intrusion (100km width) in Figure 14A1 results in a decrease in the maximum mid-tropospheric meridional velocities compared to the standard configuration (8m.s^{-1} compared to 11m.s^{-1} in Experiment 0). Conversely, the wider intrusion results in an increase in the maximum mid-tropospheric meridional velocities compared to the standard configuration (15m.s^{-1} compared to 11m.s^{-1} in Experiment 0). The corresponding cyclonic circulation is augmented by the breadth of the intrusion. The change in intrusion width result in a change in the geometry of the resultant jet core which appears thinner and shorter for the thinner anomaly. In contrast, the broader anomaly results in a visibly broader and longer jet core, affecting almost the entire cross-sectional domain.

Deleted: Figure 15

Deleted: Figure 16

Deleted: Figure 15

Although stronger velocities are observed in the troposphere as a result of broader intrusions, the mid-tropospheric relative vorticity increases sharply for broader intrusions (Figure 15). The larger magnitude relative vorticities induced by thinner intrusions are the result of the circulation with lower velocity being confined to a smaller horizontal region around the anomaly. The width of the intrusion is also important to surface parameters. The thinner intrusion results in a reduction in the cyclonic rotation, as shown by the induced surface relative vorticity in both Figure 14 and Figure 15. The surface pressure field additionally responds to the width of the intrusion. The thinner PV intrusion results in a shallower surface pressure anomaly with a surface anomaly of 1hPa induced by the thinner intrusion (compared to 3hPa in the control experiment). Conversely, the broader intrusion induces a deeper surface pressure anomaly (to 8hPa from 3hPa). Figure 15 shows that the surface pressure

Deleted: core of the

Deleted: changes

Deleted: , whilst

Deleted: Figure 16

Deleted: , even though with

Deleted: ,

Deleted:

Deleted: Figure 15

Deleted: Figure 16

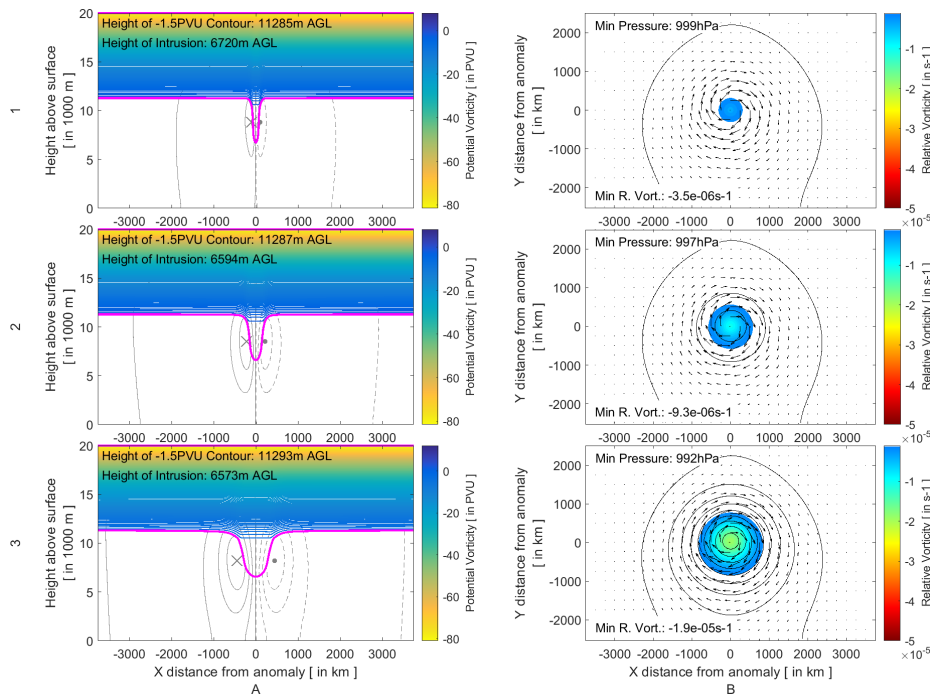
Deleted: shallower

Deleted: Figure 16

640

minimum decreases quasi-linearly with linear increasing PV anomaly width. Enhanced surface cyclonic rotation is also induced by the broader PV anomaly with increases in the surface relative vorticity. Decreases in the relative vorticity on the surface are however much less significant compared to the deepening experiments conducted in Experiments 1 and 2. Only a slight decrease in the minimum relative vorticity on the surface is discernible between the thin and broad scenarios (Figure 15). The broader anomaly results in a wider (horizontal) distribution of surface pressure. An enhanced surface pressure gradient is therefore necessarily induced by increasing the radial width of the PV anomaly, resulting in a similar degree of cyclonic vorticity at the surface.

Deleted: Figure 16



645

Figure 14: Same as in Figure 7 but with variable anomaly radial widths such that the height of the stratospheric intrusions AGL are similar from a constant dynamical tropopause depth of 12500m. The thinner intrusion is created by an anomaly with a 100km radial width (row 1) whilst the broader intrusion is created by a 400km radial width (row 3). Experiment 0 (200km radial width) is provided in row 2 for convenience and comparison.

Deleted: 15

Deleted: Figure 8

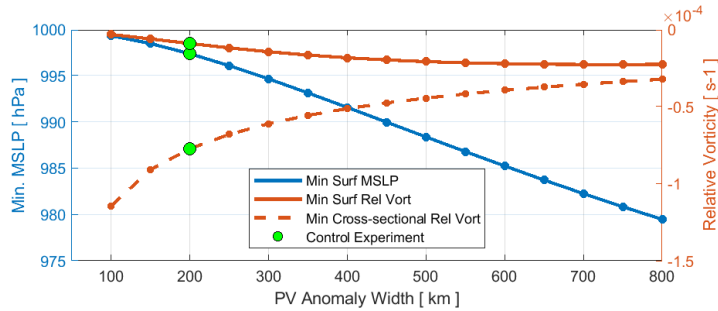


Figure 15: Same as in Figure 8 but for Experiment 5 (varying anomaly radial width experiments)

Deleted: 16

Deleted: Figure 9

655 4 Discussion and conclusion

The study by Barnes et al. (2021a) showed a climatological link between COL depth and stratospheric intrusion depth. Deep COLs, those associated with surface cyclones, were generally found to be associated with deeper stratospheric intrusions. The reanalysis-based climatology of Barnes et al. (2021a) is performed in the context of the real-world atmosphere, where a host of processes at various levels of the atmosphere can affect the development of cyclones at all levels. Therefore, it is pertinent to isolate the link between depth of their associated upper-level high-PV anomalies with the induced surface cyclogenetic forcing in an idealised setting. An initial numerical experiment using PV inversion diagnostics (Experiment 0) shows that the numerical model and PV inversion algorithms produce results as we expect from the conceptual model (Figure 1) of a high-PV anomaly in the upper-levels: a core of cyclonic flow is present around the PV anomaly, with general cyclonic motion prevalent, although weak, through the majority of the domain. The longitudinal cross-section and upper-level pressure and wind field show that the high-PV anomaly results in a trough, as is expected by theory. In the real-world atmosphere, the trough with continual amplification could develop into a COL. Cyclonic flow and low-pressure signatures are also observed on the surface. This re-emphasises that upper-level processes induce both the surface cyclone and its associated COL. For Experiment 0, cyclogenetic forcing is very weak or negligible, although relative vorticities indicate that we are on the precipice of surface cyclogenetic forcing being induced. The anomaly does however induce a closed low-pressure on the surface.

Deleted: s show the development of an amplifying

Deleted: real world

Deleted:

Deleted: are a shared development driver of

670 Experiment 1 varies the depth of a stratospheric intrusion (ie. the closest distance of a -1.5 PVU point to the surface). This experiment reveals that the depth that a stratospheric intrusion reaches is an important factor in the induced surface cyclogenetic forcing. Very shallow intrusions result in minimal pressure decrease on the surface, whilst extremely deep intrusions resulted in a pronounced decrease in surface pressure. Cyclonic circulation as measured by meridional velocities and relative vorticities is enhanced by deeper intrusions. This confirms the findings of Barnes et al. (2021a) that COLs associated with deeper high-PV intrusions are more likely to extend towards the surface. Barnes et al. (2021a) showed that COLs are more likely to be associated with a surface low if a stratospheric intrusion reaches below the 300hPa level. Using a

Deleted: amount of

Deleted: induced

Deleted: a

Deleted: amount of

simple barometric conversion from altitude to pressure with standard sea level pressure and temperature reveals that the stratospheric intrusions shown in Experiment 1 (Figure 7) extend to roughly the 270hPa, 430hPa, 610hPa and 840hPa levels. This corresponds well with the findings of Barnes et al. (2021a) with the only intrusion extending to less than the 300hPa inducing little cyclogenetic forcing on the surface.

Deleted: Figure 8

Barnes et al. (2021a) showed that shallow COLs, COLs which only extend into the mid-levels, occur most frequently in the summer months and the lower latitudes. This corresponds to seasons and regions where the dynamical tropopause is furthest away from the surface. This finding together with the finding that shallow COLs are most often associated with shallow intrusions suggested that the height AGL of the stratospheric intrusion is more important than the vertical depth of the intrusion itself. Experiments 2 and 3 show that this is indeed the case. Intrusions from high tropopause heights, as would be seen closer to the tropics and in summer, resulted in negligible cyclogenetic forcing at the surface and initiated very little pressure decrease at the surface (Experiment 2). Conversely, lower dynamical tropopauses induce enhanced surface cyclogenetic forcing and a large surface pressure decrease. Differing intrusion depths to a similar intrusion height AGL were also shown to result in similar pressure deepening (Experiment 3). It was however shown the cyclonic motion at the surface was more enhanced, however slight, for the larger vertical intrusions compared to the smaller vertical intrusion. The enhanced relative vorticity in the large intrusion suggests that the vertical height of intrusion could play a role in the extreme windstorms (eg. Liberato 2014). Of course, it should also be noted that anomalies at the surface and in the low-levels can also enhance cyclogenetic forcing when in phase as shown in the example of Cape Storm by Barnes et al. (2021a).

Deleted: Barnes et al. (2021b).

A key finding of this study is the relative contribution of each of the different factors tested to surface cyclogenetic forcing. Experiments 1-3 show that it is the depth that the stratospheric intrusion reaches that is the major factor in surface cyclogenetic forcing. Larger intrusions induce greater cyclogenetic forcing in the mid-levels than smaller intrusions. However, if the PV intrusions are situated further away from the surface (from a tropopause further away from the surface), the resulting relative vorticity on the surface is diminished and is comparable to that of a smaller intrusion extending to a similar height AGL from a tropopause height closer to the surface. In terms of surface relative vorticity, wider intrusions are found to have a small, but largely negligible effect, despite the dramatic effect that these differences have in the mid-troposphere. The width of these intrusions do still have a large effect the surface pressure of beneath them. With constant stratospheric depth (5000m) and constant tropopause height AGL (12500m), a thin filament intrusion with a radius of 100km resulted in a minimal pressure decrease at the surface. Interestingly, the degree of surface pressure was comparable to that of the intrusion of double the width (200km) and half the vertical extent (2500m) as seen in Experiment 1 (Figure 7, top panels).

Deleted: s

Deleted: is

Deleted: cyclogenesis

Conversely, an intrusion with a large area of with radius of 400km resulted in a slightly deeper surface low-pressure comparable to that of the intrusion with half the width and 50% more depth as shown in Experiment 1 (Figure 7, bottom panels). The resulting surface pressure and relative vorticity patterns together provide a picture of the weather systems being forced on the surface. Wider intrusions produce wider, deeper cyclonic circulations whilst thinner filaments of PV produce shallower, smaller cyclonic circulations.

Deleted: Figure 8

Deleted: Figure 8

Deleted: es

Deleted: es

Conceptually, there is a distinct difference between the surface cyclonic circulations induced by the idealised intrusions presented here and which occur in reality. This is explained fully in Hoskins et al. (1985) and was touched on in Barnes et al. (2021a). Surface lows are generally found to the east of the COL and upper-level PV anomaly axis. In these idealised cases however, the centre of the induced surface cyclonic is directly beneath the PV anomaly. In the real atmosphere, the surface cyclonic motion induced by the upper-level anomaly acts as a mechanism for warm surface temperature advection to the east of the upper-level anomaly. This surface temperature (and therefore potential temperature) anomaly has PV-like properties and can induce its own surface cyclonic circulation. Deeper intrusions will therefore drive more intense warm-air advection to the east of the trough axis, inducing enhanced cyclogenesis. One of the major limitations of this work is the lack of a temporal aspect in the experimental framework. Surface cyclones are not produced instantaneously but grow over time. Additionally, in the real-world atmosphere, upper-level PV anomalies are also influenced by the vertical structure of the air column and thermodynamic properties of the air beneath it. Future work should include the use of a numerical dynamical core which will have a temporal element and include processes such as upper-level induced surface warm-air temperature advection in a more realistic baroclinic [environment](#). This would also improve general analysis of the temporal aspect of intrusions as they grow and decay and the resulting effect on surface cyclogenesis. A dynamical core would also allow for the study of more complex vertical structures such as the inclusion of temperature inversions beneath the PV inversion.

5 References

- 745 Ahmadi-Givi F, Graig GC, Plant RS (2004) The dynamics of a midlatitude cyclone with very strong latent-heat release. *Q J R Meteorol Soc* 130:295–323. <https://doi.org/10.1256/qj.02.226>
- Arakane S, Hsu HH (2020) A tropical cyclone removal technique based on potential vorticity inversion to better quantify tropical cyclone contribution to the background circulation. *Clim Dyn* 54:3201–3226. <https://doi.org/10.1007/s00382-020-05165-x>
- 750 Barnes MA, Ndarana T, Landman WA (2021a) Cut-off lows in the Southern Hemisphere and their extension to the surface. *Clim Dyn*. <https://doi.org/10.1007/s00382-021-05662-7>
- Barnes MA, Turner K, Ndarana T, Landman WA (2021b) Cape storm: A dynamical study of a cut-off low and its impact on South Africa. *Atmos Res* 249:105290. <https://doi.org/10.1016/j.atmosres.2020.105290>
- Baxter MA, Schumacher PN, Boustead JM (2011) The use of potential vorticity inversion to evaluate the effect of precipitation on downstream mesoscale processes. *Q J R Meteorol Soc* 137:179–198. <https://doi.org/10.1002/qj.730>
- 755 Bierly GD (1997) The role of stratospheric intrusions in colorado cyclogenesis. *Phys Geogr* 18:346–362. <https://doi.org/10.1080/02723646.1997.10642624>
- Brennan MJ, Lackmann GM (2005) The influence of incipient latent heat release on the precipitation distribution of the 24–25 January 2000 U.S. East Coast cyclone. *Mon Weather Rev* 133:1913–1937. <https://doi.org/10.1175/MWR2959.1>

Deleted: This study analyses idealised stratospheric intrusions in a general sense. Although the climatology of Barnes et al. (2021a), looked at PV anomalies with respect to COL development, they are applicable for both intrusions that result in the formation of a closed low as well as those that only ever form an upper-level trough. Regardless, the results clearly confirm the climatological link found by Barnes et al. (2021a) that stratospheric intrusion depth is an important contributing factor that results in the extension of a COL to the surface. ¶

Deleted: Barnes MA, Ndarana T, Landman WA (2021b) Cut-off lows in the Southern Hemisphere and their extension to the surface. *Clim Dyn*. <https://doi.org/10.1007/s00382-021-05662-7> ¶

Deleted: 2021c

- Čampa J, Wernli H (2012) A PV perspective on the vertical structure of mature midlatitude cyclones in the Northern Hemisphere. *J Atmos Sci* 69:725–740. <https://doi.org/10.1175/JAS-D-11-050.1>
- 775 Charney JG, Stern ME (1962) On the Stability of Internal Baroclinic Jets in a Rotating Atmosphere. *J Atmos Sci* 19:159–172. [https://doi.org/10.1175/1520-0469\(1962\)019<0159:OTS0IB>2.0.CO;2](https://doi.org/10.1175/1520-0469(1962)019<0159:OTS0IB>2.0.CO;2)
- Davis CA (1992a) A potential-vorticity diagnosis of the importance of initial structure and condensation heating in observed extratropical cyclogenesis. *Mon. Weather Rev.* 120:2409–2428
- Davis CA (1992b) Piecewise Potential Vorticity Inversion. *J Atmos Sci* 49:1397–1411. [https://doi.org/10.1175/1520-0469\(1992\)049<1397:PPVI>2.0.CO;2](https://doi.org/10.1175/1520-0469(1992)049<1397:PPVI>2.0.CO;2)
- 780 Davis CA, Emanuel KA (1991) Potential vorticity diagnostics of cyclogenesis. *Mon. Weather Rev.* 119:1929–1953
- Fehlmann R (1997) Dynamics of seminal PV elements. Swiss Federal Institute of Technology Zurich
- Holton JR, Hakim GJ (2013) *An Introduction to Dynamic Meteorology*. Elsevier
- Hoskins BJ, McIntyre ME, Robertson AW (1985) On the use and significance of isentropic potential vorticity maps. *Q J R Meteorol Soc* 111:877–946. <https://doi.org/10.1002/qj.49711147002>
- 785 Huo Z, Zhang DL, Gyakum JR (1999) Interaction of potential vorticity anomalies in extratropical cyclogenesis. Part I: Static piecewise inversion. *Mon Weather Rev* 127:2546–2561. [https://doi.org/10.1175/1520-0493\(1999\)127.0.CO;2](https://doi.org/10.1175/1520-0493(1999)127.0.CO;2)
- Iwabe CMN, Da Rocha RP (2009) An event of stratospheric air intrusion and its associated secondary surface cyclogenesis over the South Atlantic Ocean. *J Geophys Res Atmos* 114:1–15. <https://doi.org/10.1029/2008JD011119>
- 790 Kleinschmidt E (1950) Über Aufbau und Entstehung von Zyklonen. *Meteorol Rdsch* 3:1–6
- Kunz A, Konopka P, Müller R, Pan LL (2011) Dynamical tropopause based on isentropic potential vorticity gradients. *J Geophys Res* 116:D01110. <https://doi.org/10.1029/2010JD014343>
- Lackmann GM (2011) *Midlatitude synoptic meteorology: Dynamics, analysis and forecasting*. American Meteorological Society, Boston, MA
- 795 Liberato MLR (2014) The 19 January 2013 windstorm over the North Atlantic: Large-scale dynamics and impacts on Iberia. *Weather Clim Extrem* 5:16–28. <https://doi.org/10.1016/j.wace.2014.06.002>
- Moller JD, Montgomery MT (2000) Tropical cyclone evolution via potential vorticity anomalies in a three-dimensional balance model. *J Atmos Sci* 57:3366–3387. [https://doi.org/10.1175/1520-0469\(2000\)057<3366:TCEVPV>2.0.CO;2](https://doi.org/10.1175/1520-0469(2000)057<3366:TCEVPV>2.0.CO;2)
- Ndarana T, Waugh DW (2011) A climatology of Rossby wave breaking on the Southern Hemisphere tropopause. *J Atmos Sci* 68:798–811. <https://doi.org/10.1175/2010JAS3460.1>
- 800 Pang H, Fu G (2017) Case study of potential vorticity tower in three explosive cyclones over Eastern Asia. *J Atmos Sci* 74:1445–1454. <https://doi.org/10.1175/JAS-D-15-0330.1>
- Peters D, Waugh DW (1996) Influence of Barotropic Shear on the Poleward Advection of Upper-Tropospheric Air. *J Atmos Sci* 53:3013–3031. [https://doi.org/10.1175/1520-0469\(1996\)053<3013:OBSOT>2.0.CO;2](https://doi.org/10.1175/1520-0469(1996)053<3013:OBSOT>2.0.CO;2)

- 805 Reed RJ (1955) A Study of a Characteristic Type of Upper-level Frontogenesis. *J Meteorol* 12:226–237.
[https://doi.org/10.1175/1520-0469\(1955\)012<0226:ASOACT>2.0.CO;2](https://doi.org/10.1175/1520-0469(1955)012<0226:ASOACT>2.0.CO;2)
- Røsting B, Kristjánsson JE (2012) The usefulness of piecewise potential vorticity inversion. *J Atmos Sci* 69:934–941.
<https://doi.org/10.1175/JAS-D-11-0115.1>
- Sprenger M (2007) Numerical piecewise potential vorticity inversion: A user guide for real-case experiments. 98
- 810 Sprenger M, Croci Maspoli M, Wernli H (2003) Tropopause folds and cross-tropopause exchange: A global investigation based upon ECMWF analyses for the time period March 2000 to February 2001. *J Geophys Res* 108:8518.
<https://doi.org/10.1029/2002JD002587>
- Thorncroft CD, Hoskins BJ, McIntyre ME (1993) Two paradigms of baroclinic-wave life-cycle. *QJR Meteorol Soc* 119:17–55.
<https://doi.org/10.1002/qj.49711950903>
- 815 Uccellini LW, Keyser D, Brill KF, Wash CH (1985) The Presidents' Day cyclone of 18–19 February 1979: influence of upstream trough amplification and associated tropopause folding on rapid cyclogenesis. *Mon. Weather Rev.* 113:962–988