

# Summertime Rossby waves in climate models: Substantial biases in surface imprint associated with small biases in upper-level circulation

Fei Luo<sup>1,2</sup>, Frank Selten<sup>2</sup>, Kathrin Wehrli<sup>3</sup>, Kai Kornhuber<sup>4,5</sup>, Philippe Le Sager<sup>2</sup>, Wilhelm May<sup>6</sup>, Thomas Reerink<sup>2</sup>, Sonia I. Seneviratne<sup>3</sup>, Hideo Shiogama<sup>7</sup>, Daisuke Tokuda<sup>8</sup>, Hyungjun Kim<sup>8,9,10</sup>, and Dim Coumou<sup>1,2</sup>

<sup>1</sup>Institute for Environmental Studies (IVM), VU University Amsterdam, Amsterdam, Netherlands

<sup>2</sup>Royal Netherlands Meteorological Institute (KNMI), De Bilt, Netherlands

<sup>3</sup>Institute for Atmospheric and Climate Science, Department of Environmental Systems Science, ETH Zurich, Zurich, Switzerland

<sup>4</sup>Earth Institute, Columbia University, New York, United States

<sup>5</sup>Lamont-Doherty Earth Observatory, Columbia University, New York, United States

<sup>6</sup>Centre for Environmental and Climate Science (CEC), Lund University, Lund, Sweden

<sup>7</sup>Center for Global Environmental Research, National Institute for Environmental Studies, Tsukuba, Japan

<sup>8</sup>Moon Soul Graduate School of Future Strategy, Korea Advanced Institute of Science and Technology, Daejeon, Korea

<sup>9</sup>Department of Civil and Environmental Engineering, Korea Advanced Institute of Science and Technology, Daejeon, Korea

<sup>10</sup>Institute of Industrial Science, University of Tokyo, Tokyo, Japan

Correspondence to: Fei Luo (fei.luo@vu.nl)

**Abstract.** In boreal summer, circumglobal Rossby waves can promote stagnating weather systems that favor extreme events like heatwaves or droughts. Recent work showed that amplified Rossby wavenumber 5 and 7 show phase-locking behavior which can trigger simultaneous warm anomalies in different breadbasket regions in the Northern Hemisphere. These types of wave patterns thus pose a potential threat to human health and ecosystems. The representation of such persistent wave events in summer and their surface anomalies in general circulation models (GCMs) has not been systematically analyzed. Here we validate the representation of wavenumbers 1-10 in three state-of-the-art global climate models (EC-Earth, CESM, and MIROC), quantify their biases and provide insights into the underlying physical reasons for the biases. To do so, the ExtremeX experiments output data were used, consisting of (1) historic simulations with a freely running atmosphere with prescribed ocean, and experiments that additionally (2) nudge towards the observed upper-level horizontal winds, (3) prescribe soil moisture conditions, or (4) do both. The experiments are used to trace the sources of the model biases to either the large-scale atmospheric circulation or surface feedback processes. Focusing on wave-5 and wave-7, we show that while the wave's position and magnitude are generally well represented during high amplitude (> 1.5 s.d.) events, the associated surface anomalies are substantially underestimated. Near-surface temperature, precipitation and mean sea level pressure are typically underestimated by a factor of 1.5 in terms of normalized standard deviations. The correlations and normalized standard deviations for surface anomalies do not improve if the soil moisture is prescribed. However, the surface biases are almost

Deleted: circumglobal

Deleted: mall biases in upper-level circulation create s

Deleted: observatory

Deleted: highlighted the risks associated with

Deleted: u

Deleted: ing

Deleted: specific

Deleted: agricultural

Deleted: summertime

Deleted: imprints

Deleted: which are

Deleted: of

Deleted: in the atmosphere

Deleted: s

Deleted: W

Deleted: is

Deleted: well

Deleted: wave-5 and wave-7

Deleted: the imprint on

Deleted: variables

Deleted: is

Deleted: :

Deleted: ,

Deleted: correlation and

Deleted: (n.s.d.) for near-surface temperature and mean sea level pressure. For precipitation, it is also a factor of 1.5 for n.s.d. but 2 for correlation

Deleted: n.s.d.

Deleted: variables

Deleted: only

Deleted: but

Deleted: corrected

entirely removed when the upper-level atmospheric circulation is nudged. When both prescribing soil moisture and nudging the upper-level atmosphere, then the surface biases remain quite similar to the experiment with nudged atmosphere only. We conclude that the near-surface biases in temperature and precipitation are in the first place related to biases in the upper-level circulation. Thus, relatively small biases in the models' representation of the upper-level waves can strongly affect associated temperature and precipitation anomalies.

- Deleted: applying both
- Deleted: prescription
- Deleted: of
- Deleted: both
- Deleted: correlation and n.s.d. values
- Deleted: are
- Deleted: s
- Deleted: where only the
- Deleted: component is nudged
- Deleted: Hence
- Deleted: ,
- Deleted: can be substantially improved when nudging the upper-level circulation providing evidence that
- Deleted: record breaking

1 Introduction

The past decade has witnessed a series of unprecedented boreal summer weather extreme events around the globe, such as the 2010 Russian heatwave, 2012 North American heatwave, and the record-breaking heatwaves of 2015, 2018 and 2019 in Europe (Barriopedro et al., 2011; Kornhuber et al., 2019; Krzyżewska and Dyer, 2018; Wang et al., 2014; Huntingford et al., 2019; Xu et al., 2021). Some of these events also happened simultaneously with other types of extremes such as the persistent Russian heatwave and Pakistan flood in 2010 July and August (Lau and Kim, 2012; Martius et al., 2013). Persistent weather extremes are often induced by certain Rossby wave patterns. For instance, Recurring Rossby Waves Packets (RRWPs) can lead to cold spells in winter and hot spells in summer (Röthlisberger et al., 2019). These persistent weather extremes can have disastrous impacts on human health and societies, such as wide spread crop failure, infrastructure damage and properties loss, especially when they co-occur (Zscheischler et al., 2018). Several other studies have identified that amplified circuglobal waves favor the occurrence of weather extremes in specific regions (Screen and Simmonds, 2014; Kornhuber et al., 2020). Specifically, in summer wave-5 (Ding and Wang, 2005; Kornhuber et al., 2020) and wave-7 (Kornhuber et al. 2019., 2020) have preferred phase positions and thereby favor simultaneous extremes in major breadbasket regions (Kornhuber et al., 2020).

- Deleted: Persistent weather extremes are often induced by quasi-stationary Rossby waves. For instance, Recurring Rossby Waves Packets (RRWPs) can lead to cold spells in winter and hot spells in summer (Röthlisberger et al., 2019).
- Deleted: also
- Deleted: certain

Several mechanisms can promote quasi-stationary Rossby waves including strong convective forcing from monsoons (Di Capua et al., 2020), extratropical sea surface temperature (SST) anomalies (McKinnon, et al., 2016; Vijverberg, et al., 2020), soil moisture anomalies (Teng and Branstator, 2019), waveguide effect (Hoskins and Ambrizzi, 1993), and wave-resonances (Petoukhov et al., 2013, 2016; Kornhuber et al., 2017; Thomson and Vallis, 2018). Recent work by Di Capua et al. (2020) found that the latent heat release during the Indian Summer Monsoon initiates a circuglobal teleconnection pattern, which reflects a wave-5 type pattern in the northern mid-latitudes. Extratropical SSTs can interact with atmospheric waves creating quasi-stationary atmospheric Rossby waves favorable for e.g. hot days in the eastern United States (McKinnon et al., 2016; Vijverberg and Coumou, 2022). Moreover, waves can be excited by reduced soil moisture and then maintained by waveguides in the Northern Hemisphere mid-latitudes (Teng et al., 2019). Quasi-Resonant Amplification (QRA) theory suggests that synoptic scale Rossby waves can be trapped within the mid-latitude waveguides, where they can get amplified given suitable forcing conditions (Petoukhov et al. 2013). Since the wave's energy is not lost via meridional dispersion, waves tend to propagate over long longitudinal distances and can sometimes form a circuglobal wave pattern (Hoskins and Ambrizzi, 1993; Branstator, 2002b; Teng and Branstator, 2019).

- Deleted: , which could result in high-amplitude wave events occurring more often

Climate models are important tools for process understanding and assessment of future climate risks. However, most of the previous studies that link specific Rossby wave patterns to regional extreme events are based on reanalysis or observational data. Although studies such as Garfinkel et al. (2020); Wills et al. (2019) have analyzed waves in models, their focus is not on summer. Moreover, no study has analyzed the phase-locking behavior of amplified, quasi-stationary Rossby waves in summer, despite the risks these waves can create for society. Furthermore, most studies have not analyzed waves above wave number 6. Studies by Branstator et al. (2002 & 2017) have also looked into models but focused on seasonal means and/or winter. A multi-model validation study of quasi-stationary Rossby waves in boreal summer is still lacking. Another key issue here is the general underestimation of models in atmospheric blocking in summer (Davini and D'Andrea 2020), likely linked to a misrepresentation of the processes that maintain blocking. This reduces the reliability of future model projections, in particular for extreme weather events (Scaife et al. 2010; Shepherd 2014). A recent study by Davini and D'Andrea (2020) analyzed the representation of both winter and summer blocking in models from the Coupled Model Intercomparison Project Phase 3 (CMIP3, 2007), CMIP5 (2012), and CMIP6 (2019). Although biases in CMIP6 models were reduced by 50% compared to CMIP3, in some key regions like Europe, the biases still remain. Thus, even CMIP6 models cannot truthfully reproduce blocking frequencies over Europe nor capture the observed significant increase in summertime blocking over Greenland (Davini and D'Andrea 2020).

Furthermore, while here we focus on wave-5 and 7, extreme events can also occur with other wavenumbers. High-amplitude slow-moving planetary waves are associated with persistent surface weather conditions. For example, QRA mechanism can explain the generation of circumglobal Rossby waves with wavenumbers 6 to 8 in the Northern Hemisphere (Coumou et al., 2014). The evidence for QRA in the Southern Hemisphere (SH) is also found to exist for wavenumbers 4 and 5 (Kornhuber, 2017). Whether climate models can also reproduce this wide range of wave numbers and their associated surface anomalies needs to be tested.

Thus, to increase confidence in future projections of extreme summer weather, a validation of state-of-art climate models in their representation of quasi-stationary Rossby waves in summer is essential. We analyze the upper-level dynamical characteristics, in terms of the wave's amplitude and phase position, as well as the associated anomalies in surface variables. We systematically validate the representation of summertime Rossby waves in three state-of-the-art climate models, focusing on wave-5 and 7 in the northern mid-latitudes, their phase-locking behavior and surface anomalies. Further, by nudging the upper-level atmosphere or prescribing soil-moisture, we aim to understand the origin of the biases in surface variables during high-amplitude wave events.

**Deleted:** circumglobal ... rossby wave patterns to regional extreme events are based on reanalysis or /...bservational data. Although studies such as Garfinkel et al. (2020); Wills et al. (2019) have analyzed waves in models, their focus is not on summer and, also, ... Moreover, they have not ... [1]

**Deleted:** s

**Deleted:** explored

**Deleted:** s

**Deleted:** Thus,...a... multi-model validation study of quasi-stationary Rossby waves in boreal summer is still lacking. Another key issue here is the general underestimation of models in atmospheric blocking in summer (Davini and D'Andrea 2020), likely linked due ... o the ... misrepresentation of the atmospheric circulation and ...rocesses that maintain blocking. ; t...his reduces the reliability of future model projections, in particular for extreme weather events (Scaife et al. 2010; Shepherd 2014). A recent study by Davini and D'Andrea (2020) analyzed the representation of both winter and summer time ...locking frequencies ...n models from the Coupled Model Intercomparison Project Phase 3 (CMIP3, 2007), CMIP5 (2012), and CMIP6 (2019). Although biases in CMIP6 models were reduced by 50% compared to CMIP3, models ...n some key regions like Europe, the biases still remain....hence: 1: ...hus, even CMIP6 models cannot truthfully reproduce wintertime blocking frequencies in ...ver Europe , 2: CMIP models are not able to ...or capture the observed significant and robuststrong ... [2]

**Deleted:** and significant

**Deleted:** activities

**Deleted:** it should also be noted that although it i's not examined in detail in this study...hile here we focus on wave-5 and 7, extreme events can also occur at ...ith other wavenumbers apart from wave-5 and 7... High ...igh-amplitude slow ...low-moving planetary waves are associated with the ...ersistentce ... [3]

**Deleted:** duration

**Deleted:** of

**Deleted:** is able to

**Deleted:** in

**Deleted:** proper ...alidation of state-of-art climate models in their representation of quasi-stationary circumglobal ...Rossby waves in summer is essential. Both ...e analyze the upper-level dynamical characteristics, in terms of the wave's amplitude and phase position, as well as the waves' impact on...associated anomalies in surface weather is important...ariables. Here w...e systematically validate the representation of summertime Rossby waves in three state-of-the-art climate models, focusing on wave-5 and 7 in the northern mid-latitudes, their phase-locking behavior and surface anomalies. Further, we remove the bias in only one or two components of the model ...y nudging the upper-level atmosphere and/...r prescribing soil-moisture, to reanalysis, ...e aim to understand the origin of model ... [4]

This paper aims at addressing the following questions:

- 1: Can models capture the key characteristics of high-amplitude quasi-stationary Rossby waves in summer?
- 2: What are the near-surface temperature, precipitation, and mean sea level pressure anomalies from such waves and how do they compare to observations?
- 3: Do potential model biases in surface variables originate primarily from the atmospheric circulation or from land surface-feedbacks?

Deleted: circumglobal

## 2 Data and Methods

### 2.1 ExtremeX experiment

We use simulation output from three Earth System Models (ESM) that participated in the ExtremeX modeling experiment (Wehrli et al., 2021, in review): European Community Earth System Model version 3.3.1 (EC-Earth 3.3.1; Döscher et al., 2021, in review), Community Earth System Model version 1.2 (CESM1.2; Hurrell et al., 2013), and Model for Interdisciplinary Research on Climate version 5 (MIROC5; Watanabe et al., 2010). The configuration of CESM and MIROC was used for CMIP5 (CMIP5; Taylor et al., 2012), whereas EC-Earth is the latest 3<sup>rd</sup> generation model which was used for CMIP6 (Eyring et al., 2016). The ExtremeX modeling experiments were designed to disentangle the influence from atmospheric dynamics vs. soil moisture feedback on extreme events such as heatwaves, droughts, and other extremes. By nudging either the upper-level atmosphere or prescribing the soil moisture state, or both, the individual effects can be compared across different models. Details on the experimental set-up and atmospheric nudging approach are described in a recent study which examined five individual heatwaves in the period of 2010 – 2016 (Wehrli et al., 2019).

Deleted: where

Deleted: were examined

### 2.2 Model data output

Here we use four out of five sets of simulations from ExtremeX, which are all run in Atmospheric Model Intercomparison Project (AMIP) (Gates et al., 1999) style with prescribed monthly mean SSTs and sea-ice. The four experiments are run with respectively (1) interactive atmosphere and soil moisture, as control simulation (AISi), (2) nudged atmosphere (mostly above 700 hPa) but interactive soil moisture (AFSi), (3) nudged atmosphere with prescribed soil moisture (AFSF), and (4) interactive atmosphere with prescribed soil moisture (AISF). The experiment period extends from January 1979 to December 2016 for both EC-Earth and CESM and till December 2015 for MIROC. Overall output is provided 6-hourly on different model grids (in number of grid points longitude x latitude): EC-Earth (512 x 256), CESM (288 x 192), and MIROC (256 x 128). There are five ensemble members for the free atmosphere experiments (AISi and AISF) for the full period. However, for the nudged atmosphere experiments (AFSi and AFSF) only one simulation was sufficient. All model and reference data are regridded to the same resolution (256 x 128) for comparisons.

Deleted: ,

Deleted: but differing in whether the other components are free or constrained.

Deleted: :

Deleted: reference

Deleted: runs

Deleted: whole

Deleted: ,

Deleted: for each experiment was used

295 **2.3 Atmospheric nudging**

To constrain the natural variability in large-scale atmospheric circulation, a grid-point nudging method was implemented in the AFSI and AFSF experiments (Jeuken et al., 2016). This approach forces the atmospheric large-scale circulation by introducing a tendency term in the horizontal wind components. By taking the differences between the model simulations and reference dataset, the added tendency term is computed. Kooperman et al. (2012) demonstrated that when the horizontal wind is nudged towards a reference state, the impact of natural variability is substantially reduced. The strength of the nudging can be modified by a relaxation time scale, which was chosen to be 6h following other studies (Kooperman et al., 2012). All models use 6-hourly wind field data from the ERA-Interim reanalysis as reference data (Dee et al., 2011). The vertical profile of the atmospheric nudging (See Appendix Figure B1) shows that nudging starts around 700hPa but only with a very weak nudging strength. The nudging strength increases gradually in the upward direction and full nudging is only applied above ca. 400hPa. Thus, the mid-to-upper atmosphere is nudged, and it is important to note that the planetary boundary layer is free to adjust in the nudged experiments.

**2.4 ERA5 reanalysis data**

For the study period 1979 to 2016, weekly meridional wind data at 250 hPa (v250), near-surface temperature (t2m), and mean sea level pressure (mslp) are taken from the ERA5 reanalysis for the summer months June, July, and August (JJA) (Hersbach et al., 2020). For precipitation (prcp), land-only data is used from bias-adjusted ERA5 (WFDE5\_CRU, Cucchi et al., 2020). Also, weekly t2m data is detrended to its climatological mean (1979 – 2016) values of that week.

**2.5 Extracting circumglobal waves and phase-locking analysis**

High amplitude wave events are selected based on the Fourier transformation analysis of weekly-mean v250 averaged over 35N to 60N, both in ERA5 and models analogous to previous studies (Kornhuber et al. 2019, 2020). Wave events are identified as those weeks with wave amplitudes higher than 1.5 standard deviations (s.d.) of the climatology calculated from 494 weeks (38 years times 13 summer weeks per year) for ERA5. Since the AISI and AISF runs both have 5 ensemble members, the total numbers of weeks are as follows:  $494 \times 5 = 2470$  for EC-Earth and CESM, and  $481 \times 5 = 2405$  for MIROC. For AFSI and AFSF, only one member is used for each model. Then, the composite surface imprints of near-surface temperature, precipitation, and mean sea level anomalies were obtained from those wave event periods. To analyze preferred phase positions of individual waves, we determine the probability density functions of phase position for high-amplitude wave events.

**2.6 Model bias definition**

Our model experiments can be used to better understand the source of the models' biases in surface anomalies, and analyze whether those are primarily coming from the upper-level atmosphere or from the land surface component. To do so, we compare the biases in our different modelling experiments. Here we define 'bias' as the difference between a model composite

- Deleted: both zonally and meridionally
- Deleted: This added
- Deleted: alculated between the simulations and reference dataset
- Deleted: minimiz
- Deleted: vertical profile
- Deleted:
- Deleted: s
- Deleted: EC-Earth
- Deleted: xxx
- Deleted: (
- Deleted: ,
- Deleted: CESM 494 x 5 and MIROC
- Deleted: xxx
- Deleted: (
- Deleted: )
- Deleted: s
- Deleted: T
- Deleted: for
- Deleted: s are obtained for waves 5 to 8
- Deleted: the weeks with identified
- Deleted: T
- Deleted: isolate
- Deleted: imprint
- Deleted: s
- Deleted: to either
- Deleted: to
- Deleted: ,
- Deleted: construct the composites during wave 5 and wave 7 events for all the variables in both reanalysis data and different model runs. Then
- Deleted: the
- Deleted: es
- Deleted: being
- Deleted: s
- Deleted: s

360 and a reanalysis composite. Using our different model setups, we can then define specific biases for various variables: the total bias ( $B_{tot}$ ), the bias from the upper-level atmospheric circulation ( $B_{atm}$ ), the bias from land-atmosphere interactions ( $B_{land}$ ), and the remaining residual bias ( $B_{res}$ ).

In the AISI experiment, both the atmosphere and land surface component are allowed to interact and evolve freely, and this experiment thus defines the total bias of surface variables:

$$B_{tot} = AISI - ERA5$$

370 When prescribing soil moisture in AISF, we assume that the bias originating from the land-component is effectively removed and only the bias from the atmosphere acting upon near-surface variables remains. Thus:

$$B_{atm} = AISF - ERA5$$

375 In contrast, when nudging the upper-level atmosphere, the upper-level circulation pattern is constrained in the model and thus the bias arises from land-atmosphere interactions.

$$B_{land} = AFSI - ERA5$$

380 When both nudging the upper-level atmosphere and prescribing soil moisture, the biases in surface variables are expected to be strongly reduced with only a residual bias remaining:

$$B_{res} = AFSF - ERA5$$

### 3 Results

#### 3.1 Climatology of summertime Rossby waves

385 We first assess whether the climate models are able to represent the mean state, in terms of wave amplitude and variability for wavenumbers 1-10 in June, July, and August. Figure 1 compares wave spectra for wavenumbers 1 to 10 from the AISI experiment with those of the ERA5 reanalysis. Overall, the wave amplitudes, regardless of wave numbers and models, are reasonably well reproduced with errors in the model climatology ranging from 5% (wave-10) to 12% (wave-3). This also applies to the variance in wave amplitude, as given by the whisker bars for each model at different wavenumbers. For all models, the wave amplitudes and variabilities follow the same behavior with increasing values from wave number 1 to 5 and

Deleted: s

Deleted: Thus

Deleted: the biases are

Deleted: surface

Deleted: d as follows

Deleted: land

Deleted: model

Deleted: of the summertime during June, July, and August

Deleted: activity

400 decreasing values from wavenumber 6 to 10. ERA5 shows the peak for both the wave amplitude and variance at wavenumber 6, which might suggest a systematic bias in the models, or alternatively it might be an under-sampling issue in ERA5.

### 3.2 Wave phase-locking behaviors

Following Kornhuber et al (2020), we use 1.5 s.d. above the mean wave amplitude as a threshold to define high-amplitude wave events to analyze phase-locking behavior of high-amplitude waves 5-8. The phase positions of high amplitude events are shown in Fig. 2. In ERA5 waves have inherent phase-locking properties, especially for waves 5 and 7, as visible by a single peak in the probability density function. This is consistent with the work from Kornhuber et al. (2019) who used different reanalysis data, i.e. NCEP-NCAR (Kalnay et al., 1996). Also, in the NCEP-NCAR reanalysis data, waves 6 and 8 do not really show a preferred phase position. In our experiments, across all three models, strong phase-locking behavior is detected for wave-7. For wave-5, two models (CESM and MIROC) show phase locking that is comparable to ERA5, however EC-Earth underestimates the peak, and thus the strength of phase-locking.

ERA5 shows no phase-locking for wave 6 and wave 8 but rather only a mild preference for some phase positions. The models capture this, with only MIROC showing fairly pronounced phase-locking behavior for wave 6. Detailed histograms comparing the models with ERA5 are provided in Fig. B2.

### 3.3 High-amplitude wave events and their surface imprint

Let's recall that when summertime amplified Rossby waves get locked in a preferred position, especially for wave-5 and wave-7, this favors a prolongation of simultaneous surface warm anomalies. As we find that the preferred phase position of waves 5 and 7 is reasonably well represented in models, we next analyze high-amplitude events (i.e. those exceeding 1.5 s.d.) in more detail. The wave event occurrence is computed as the percentage of weeks showing high amplitude wave events during the 1979 to 2015/16 summer. For ERA5, this is the case for 8.1% and 7.1% of all weeks for wave-5 and wave-7 events, respectively. The occurrence-frequencies are quite comparable for the models: 7.7% (EC-Earth), 8.0% (CESM), and 7.9% (MIROC) for wave-5, and 8.1% (EC-Earth), 7.8% (CESM), and 8.0% (MIROC) for wave-7. Figures 3 and 4 show the upper-level meridional wind (v at 250 hPa, absolute field), and anomalies of near-surface temperature (t2m), precipitation (prcp), and sea level pressure (mslp) during high-amplitude events in ERA5 (panel a). The same variables are shown for the free-running atmosphere and soil moisture (AIS) experiments using the three climate models (panels b-d). Extended analysis for other wavenumbers revealed that the evaluated models are capable of reproducing the high-amplitude Rossby waves 4 to 8 and their associated surface anomalies reasonably well (Fig. B3 - B5). The results imply that the model is able to reproduce summertime surface anomalies associated to different wavenumber events. Using anomalies for the upper-level meridional winds, in contrast to absolute v250, gives consistent results (compare Fig. 3 and 4 and Fig. B10 and B11, respectively). Furthermore, Fig. B12 and B13 show that the composite anomalies for v250, t2m, and mslp are significant for both waves 5 and 7, accounting also for the False Discovery Rate (FDR; Benjamini & Hochberg, 1995).

**Deleted:** till ...rom wavenumber 6 to 10-10 thereafter ... [5]

**Deleted:** high ...igh-amplitude wave events to analyze phase-locking behavior of high- ... [6]

**Deleted:** 4

**Deleted:** It is clear that...n ERA5 data ...aves have...inherent phase-locking properties, especially for waves 5 and 7, as visible by (... single symmetrical ...eak in the probability density function) according to the probability density ... [7]

**Deleted:** , which

**Deleted:** remains ...s consistent with the work from Kornhuber et al. (2019) where ...ho used...different reanalysis data, i.e. NCEP-NCAR (Kalnay et al., 1996) was used ... [8]

**Deleted:** (a single symmetrical peak in the probability density function)

**Deleted:** can clearly be...s observed reproduced ... [9]

**Deleted:** in the probability density function.

**Deleted:** sons...between ...he models and ... [10]

**Deleted:** can be found at

**Deleted:** circumglobal ...ossby waves get locked in their ... preferred favorite ...ositions... especially for wave-5 and wave-7, they ...his favors a prolongation of simultaneous surface warm anomalies. As we find that the preferred phase position of circumglobal ... [11]

**Deleted:** calculated ...omputed as the percentage of weeks showing number of weekssselected as ... [12]

**Deleted:** months

**Deleted:** divided by the total number of weeks then times one hundred percent. The occurrences of JJA wave-5 and wave-7 events during 1979 to 2016 ...f...r ERA5 a... this is the case forre ... [13]

**Deleted:** the...ll weeks for wave-5 and wave-7 events, respectively. The occurrence-frequencies values ...re quite comparable to the results calculated from...or the models: 7.7% (EC-Earth), 8.0% (CESM), and 7.9% (MIROC) for wave-5, whereas the occurrences are ... [14]

**Deleted:** circulation ...eridional wind (v at 250 hPa, absolute field), and anomalies of near-surface temperature anomaly ...t2m), precipitation anomaly ...prcp), and sea level pressure anomaly (mslp) signals during such high-amplitude events in ERA5 (a) and ... [15]

**Deleted:** and for t

**Deleted:** (Fig. 3 & Fig. 4)... ELater we e...tended our ...nalysis... [16]

**Deleted:**

**Deleted:** field

**Deleted:** surface imprint

**Deleted:** events also for wavenumbers 4, 6, and 8 ...See Appendix... [17]

**Deleted:** U...per-level meridional winds, in contrast to anomaly... [18]

**Deleted:** In ...ig. 3 and Fig.... and Fig. B10 and B11, respectively... [19]

**Deleted:** which was confirmed by estimating the

**Deleted:** Fig. 3 and Fig. 4 with significant tests at confident level... [20]

615 Additionally, to quantify the bias of all models and to visualize how close the models are to the ERA5 reanalysis data, we present our findings in a Taylor Diagram (Taylor 2001) for wave-5 (Fig. 5) and wave-7 (Fig. 6). A Taylor Diagram presents three key statistics in one single plot: the Pearson correlation between the observed and modeled spatial pattern; the centered Root Mean Square Error (RMSE) of the modeled field compared to observed; and the normalized spatial standard deviation of the modeled field as compared to observed. Thus, v250 during high-amplitude wave events, as well as t2m, prcp, and mslp anomalies from the different models are plotted in the Taylor Diagram, showing their correspondence to ERA5 reanalysis data.

620 All models are able to capture the mean upper-level circulation patterns reasonably well for wave-5 with correlations for v250 of 0.86 (EC-Earth), 0.95 (CESM), and 0.88 (MIROC) (Fig. 5 & Table A1). This is consistent with our findings from Fig. 1 and 2. For the wind speed anomalies, CESM and MIROC have similar magnitudes compared to ERA5 data, whereas the signal from EC-Earth is weaker. The n.s.d. for EC-Earth is 0.70, for CESM it is 1.04, and for MIROC it is 1.24. This also holds for

625 t2m anomalies during wave-5 events, as all models are able to reproduce the patterns found in ERA5, such as the continental-scale patterns of positive and negative temperature anomalies for central North America (+), western Europe (-), and central Europe (+). However, the strength of the patterns is weaker in EC-Earth, especially for eastern Eurasia. The correlations of the t2m anomalies are substantially smaller for EC-Earth (0.55) and MIROC (0.48) than for CESM (0.81). As for prcp, all model correlations are below 0.50 with MIROC showing the lowest correlation (0.18), followed by CESM (0.43) and EC-Earth

630 (0.46). The correlation values for mslp in models vary from 0.52 (MIROC), 0.58 (EC-Earth) to 0.80 (CESM). As for the multi-model mean (MMM) n.s.d. of the different examined variables, there is a decline from v250 (0.99) to the surface variables t2m (0.71), mslp (0.69) and prcp (0.63). Thus, surface anomalies are consistently too weak. Both reanalysis data and models show strong positive anomalies in sea level pressure in the eastern basin of the Atlantic Ocean (west coast of Europe) during wave-5 events (Fig. 3).

635 For wave-7 events, the upper-level circulation patterns compare well to ERA5 data as shown by the field correlations in Table A1: 0.84 (EC-Earth), 0.84 (CESM), and 0.82 (MIROC). Again, this confirms that the models give a satisfactory performance in producing correct upper-level circulation patterns during high-amplitude wave events. This thus again indicates that models capture phase-locking well. Correlations for surface variables are lower, with t2m correlation of 0.70 (EC-Earth), 0.63

640 (CESM), and 0.53 (MIROC). The positive t2m anomalies are quite pronounced in the regions of central North America, western Europe, northern Europe and central Eurasia. All models are able to reproduce the sign of t2m anomalies in these regions but with smaller magnitudes than in ERA5. The n.s.d. values of the t2m anomalies are 0.62 (EC-Earth), 0.61 (CESM), and 0.67 (MIROC) (Table A2). The large-scale precipitation anomaly patterns in EC-Earth relate well to WFDE5 CRU data for North America, whereas in both CESM and MIROC there is more noise. The correlation of precipitation anomalies is 0.32

645 in the MMM. The large-scale patterns of mslp during wave-7 events match relatively well with ERA5 data with a MMM correlation value of 0.63. At the eastern side of the Atlantic Ocean (west coast of Europe), strong negative mslp anomalies can

**Deleted:** a...e present our findings in a Taylor Diagram (Taylor 2001) is constructed shown ...or theboth ...ave-5 (Fig. 5) and wave-7 (Fig. 6) composites ... [21]

**Deleted:** a

**Deleted:** the wave-5 and wave-7

**Deleted:** experiments with respect to ERA5 reanalysis data,

**Deleted:** During the wave-5 events, a

**Deleted:** of the...or v250 of 0.86 (EC-Earth), 0.95 (CESM), and 0.88 (MIROC) (Fig. 5 & Table A1). This is consistent with our findings from Fig. 1 and 2. In terms of the magnitude of...or the wind speed anomalies, CESM and MIROC have similar strengths magnitudes compared to ERA5 data, whereas the signal from EC-Earth is weaker. The n.s.d. for EC-Earth is 0.70, for CESM it is 1.04, and for MIROC it is 1.24. This also holds for t2msurface tempera... [22]

**Deleted:** imprints

**Deleted:** signals ...emperature anomalies for central North America (+), western Europe (-), and central Europe (+). But However, the strength of the patterns is weaker in EC-Earth, especially for eastern Eurasia. However, the...he correlations of the near-surface temperature...2m anomalies are substantially smaller for EC-Earth (0.55) and MIROC (0.48) than, but not so much...for CESM (0.81). As for precipitation...rcp, all model correlations are below 0.50 with MIROC showingbeing...the lowest correlation (0.18), followed by CESM (0.43) and EC-Earth (0.46). 0.46 for EC-Earth, and 0.43 for CESM. ...he correlation values for sea level pressure ... [23]

**Deleted:** t...ables examined ... [24]

**Deleted:** Thus

**Deleted:** As f...or the ...ave-7 events, field correlations in Table A1 show that ...he upper-level circulation patterns compare well to ERA5 data as shown by the field correlations in Table A1: 0.84 (EC-Earth), 0.84 (CESM), and 0.82 (MIROC). Again, this confirms the previous statement of ...hat the models give a'...satisfactory performance in producing correct upper-level circulation patterns during high-...mplitude wave events. This thus again indicates that models capture phase-locking well. Correlations for surface variables are lower, with The ...2m correlations ... [25]

**Deleted:** i

**Deleted:** n for the models are

**Deleted:** hot anomalies in t2m...ositive t2m anomalies are quite pronounced in the regions of central North America, western Europe, northern Europe and central Eurasia. All models are able to reproduce the hot ...ign of t2m anomalies in these regions but all have weaker positive and negative anomalies...ith smaller magnitudes than in ERA5. The with...n.s.d. values of the t2m anomalies are being ...62 (EC-Earth), 0.61 (CESM), and 0.67 (MIROC) (Table A2). The large-scale precipitation anomaly patterns in EC-Earth relate better ...ell to WFDE5 CRU data for North America, whereas in both CESM and MIROC there is more noise. The correlation of precipitation anomalies is 0.32 in the MMM. The large-scale patterns of mslp during wave-7 events match relatively well with ERA5 data with a MMM correlation value of 0.63. In contrast to wave-5 having strong positive anomalies in mslp ...a... the eastern side of the Atlantic Ocean (west coast of Europe), dur... [26]

765 be seen for the wave-7 composites, which is opposite to the wave-5 signal here. Also, positive mslp anomalies are found during wave-7 events at the east coast of North America (Fig. 4), whereas the location shows negative anomalies during wave-5 events (Fig. 3).

770 One common finding from both wave-5 and wave-7 events is that the models show relatively minor biases (n.s.d.  $\geq 0.75$ ) in upper-level circulation, but more-pronounced biases in the surface anomalies t2m, prcp, and mslp. All models substantially underestimate the magnitude of t2m, prcp, and mslp anomalies associated with wave-5 and wave-7 events, typically by a factor of 1.5 (Table A4).

3.4 Investigating sources of model biases

775 Next, we aim to understand the origin of the biases in the upper-level wind and surface fields as shown in Figs 3 and 4. As defined in the methods section, the bias maps were computed as the differences between the selected variables' anomalies in the models and in the reanalysis data ERA5 during high-amplitude wave-5 and wave-7 events. Note that the biases that we refer to in surface variables are the biases of the anomalies instead of the absolute bias of the models. Here we present and describe the EC-Earth bias maps only. Equivalent plots for the other 2 models, with qualitatively similar outcomes, can be found in Fig. B6 to Fig. B9.

780 Here, we also employ the different nudged experiments: AISF (soil moisture prescription), AFSI (upper-level atmosphere nudging), and AFSF (nudging both) (see data section above for details). Overall, when nudging both atmosphere and soil moisture, the residual bias B\_res is, as expected, negligible. This is true for both wave-5 and wave-7 events in all models and all analyzed variables (Fig. 7 & Fig. 8).

785 By nudging the atmosphere, the bias from the atmospheric part (B\_atm) is (of course) almost completely removed for the v250 anomaly across all models (see Fig. 7(a), B\_land). More interestingly, Fig. 7(b) shows that most of the EC-Earth t2m anomaly bias is also removed when we nudge the upper-level atmosphere. Thus, the total bias (B\_tot) in t2m is almost completely explained by the upper-level atmospheric bias (B\_atm), and the contribution of the land-atm bias (B\_land) is negligible (Fig 7(b)).

790 This shows, for wave 5, that free-running EC-Earth (AISF) has a relatively minor bias in v250 (blue square in Fig. 5(a)) with a correlation of  $\sim 0.9$ , a RMSE of  $\sim 0.5$  and a n.s.d. of  $\sim 0.7$ . In other words, the pattern is very similar but with a somewhat underestimated strength in terms of wind speed. Still the bias in t2m (B\_tot, blue square in Fig. 5 (b)) is substantially larger with correlation of  $\sim 0.6$ , RMSE  $\sim 0.9$ , and n.s.d  $\sim 0.6$ . Thus, the t2m anomaly is underestimated with about a factor 1.7 (n.s.d  $\sim 0.6$ ). This substantial bias in t2m is almost completely removed when nudging the upper-level wind field, i.e. removing the relatively minor bias in v250. This is shown by the blue triangle in Fig. 5 (b) for AFSI, which has a correlation of 0.94, a RMSE

Deleted: for the wave-5 composites  
Deleted: mean sea level pressure  
Deleted: (Fig.4)

Deleted: substantial  
Deleted: anomalies

Deleted: 3

Deleted: systematically assess the

Deleted: high  
Deleted: It has to be noted that

Deleted:   
Similarly, for wave-7 events, Fig. 8 (b) confirms our finding that nudging the upper-level atmosphere alone reduces the bias in surface temperature dramatically. Therefore, the total bias (B\_tot) in t2m can be explained almost fully by B\_atm, and again the land contribution to the total bias is only minor (Fig.8(b)). Specifically, with the aid of a Taylor Diagram (Fig.6 (b) & Fig.6 (d)), there is a clear separation and improvement comparing the atmospherically when nudging the atmosphere ed run (AFSI) as compared to the control run AISI and the prescribed soil moisture nudged run AISF. The t2m bias still remains substantial when nudging prescribing the soil moisture. The actual n.s.d and RMSE values for v250 in AFSI are 1.0 and 0.10, compared to that of AISI run 0.8 (n.s.d.) & and 0.55 (RMSE) for AISI respectively. Fig. 6 also exhibits that CESM and MIROC have similar characteristics, with substantial t2m and mslp being that are effectively removed by upper-level atmospheric nudging. Still in For t2m in EC-Earth, n.s.d. improves from 0.62 to 1.1 and mslp from 0.74 to 1.0. Thus, by nudging the upper-level atmosphere the surface variable get the correct magnitude. Fig. 6(c) also shows improvement that in the spatial pattern correlation improves for prcp with from 0.39 for the free running AISI run compared to 0.80 in the AFSI run. Another interesting observation obtained from comparing wave-5 and wave-7 Taylor Diagrams is that the models are more clustered for all variables for wave-7 compared to wave-5.   
Deleted: 7

Deleted:   
Deleted: bit  
Deleted: surface temperature  
Deleted: imprint  
Deleted: given  
Deleted: (  
Deleted: )  
Deleted: showing

of 0.36 and a n.s.d. of 1. As can be seen in Fig. 5, the other models behave qualitatively in a similar way, with substantial biases in near-surface temperature (in AISI, squares in Fig. 5(b)), which are largely removed when the relatively minor bias in upper level wind is removed by nudging (in AFSI, triangles in Fig. 5(b)).

Errors in precipitation anomalies are not fully removed when nudging upper-level circulation. Fig. 5 (c) shows some reduction in the overall magnitude of errors in precipitation, in particular the field correlation and n.s.d. improve by almost a factor 2 (Fig. 5(c)). Still the RMSE only marginally reduces when upper-level atmospheric nudging is applied. Biases in sea surface pressure anomalies, on the other hand, are almost completely removed with nudging (Fig. 5(d)).

Similarly, for wave-7 events, Fig. 8 (b) confirms our finding that nudging the upper-level atmosphere alone reduces the bias in surface temperature dramatically. Therefore, the total bias (B\_tot) in t2m can be explained to a large extent by B\_atm, and again the land contribution to the total bias is only minor (Fig. 8(b)). Specifically, with the aid of a Taylor Diagram (Fig. 6 (b) & Fig. 6 (d)), there is a clear improvement when nudging the atmosphere (AFSI) as compared to the control run AISI and the prescribed soil moisture run AISF. The t2m bias still remains substantial when prescribing the soil moisture. The actual n.s.d and RMSE values for v250 in AFSI are 1.0 and 0.10, compared to 0.8 and 0.55 for AISI respectively. Fig. 6 also exhibits that CESM and MIROC have similar characteristics, with substantial biases of t2m and mslp that are effectively removed by upper-level atmospheric nudging. Still in EC-Earth, for t2m, n.s.d. improves from 0.62 to 1.1 and mslp from 0.74 to 1.0. Thus, by nudging the upper-level atmosphere the surface variables get the correct magnitude. Fig. 6(c) also shows that the spatial pattern correlation improves for prcp from 0.39 for the free running AISI run to 0.80 in the AFSI run. Another interesting observation obtained from comparing wave-5 and wave-7 Taylor Diagrams is that the models are more clustered for all variables for wave-7 compared to wave-5.

In general, nudging the soil moisture does not affect the upper atmospheric flow. AISF runs have similar biases in terms of correlation, n.s.d. and RMSE, for t2m and prcp, compared to AISI, across the different models. The same conclusion stands for the AISF and AFSI runs for prcp and mslp. The aforementioned observations are location specific as one component within a climate model might, erroneously, be tuned in such a way that it compensates for biases in other components of the climate model. If so, nudging only that component would not reduce the overall bias. In this case, prescribing only the soil moisture part does not guarantee the reduction of the overall bias.

- Deleted: a
- Deleted: f
- Deleted: being
- Deleted: almost completely
- Deleted: f
- Deleted: where
- Deleted: s
- Deleted: of
- Deleted: from 0.46 to 0.81
- Deleted: , again compare squares with triangles
- Deleted: However, for the b
- Deleted: the errors
- Deleted: b

- Deleted: '
- Deleted: It can, however, in AISF runs reduce some
- Deleted: errors
- Deleted: across models
- Deleted: the
- Deleted: variables
- Deleted:

## 4 Discussion and outlook

### 4.1 Discussion

890 Large atmospheric circulation patterns, especially amplified wave-5 and wave-7 circumboreal Rossby waves, play an important role in climate variability and can trigger and maintain persistent extreme events such as heatwaves and prolonged precipitation periods during the summer months. In this study, we demonstrate that amplified Rossby waves are well captured in different climate models in terms of their climatology and variability. The phase-locking behavior, in particular for wave-5 and wave-7, is captured. Both amplitude and week-to-week variability, in terms of standard deviations, are reasonably well reproduced in all models for all relevant wave numbers. The composites and bias metrics for the upper-level wave (v250) during wave-5 and wave-7 events show that the wave's amplitude and pattern are well-captured. Although the upper-level wind flows are satisfactorily reproduced across all models, their associated anomalies in surface variables (temperature, precipitation and sea level pressure) during high-amplitude wave-5 and wave-7 events are too weak. The MMM n.s.d.s for t2m and prep are typically underestimated by a factor of 1.5 in wave-5 and wave-7 events. These model biases can be largely corrected by nudging the upper-level atmosphere. For instance, the n.s.d.s for the t2m, prcp, and msip improve approximately by a factor in the range of 1.4 to 1.6 for wave-5 and wave-7 events. Such reductions in bias metrics are not observed when prescribing the soil moisture. This implies that when removing a relatively small bias in the upper atmospheric levels (by nudging the circulation), this removes the relatively large biases in surface anomalies relevant for extremes. A full analysis of the underlying reasons is outside the scope of this paper, but here we discuss some potential mechanisms. First, nudging zonal (u) and meridional (v) winds in the upper-atmosphere, strongly constrains the large-scale vertical wind component ( $\omega$ ) which is a key input for cloud parameterization schemes. In models, large-scale vertical wind is primarily defined by divergence in the horizontal wind fields, ensuring mass conservation, and thus nudging u and v will also effectively nudge  $\omega$ . Likewise, biases in u and v will propagate in  $\omega$  and can then have a strong, possibly non-linear, impact on the amount of clouds in models (Satoh et al., 2019; Rio et al., 2019). Regions with anomalously high pressure associated with a quasi-stationary Rossby wave, will have pronounced subsidence in ERA5 but this is likely too weak in the models. As a consequence, the models might have hazier cloud conditions as compared to clear-sky conditions in ERA5. This would impact the surface by reduced short wave radiation and hence less pronounced warm anomalies. Potential limitations in the cloud parametrization schemes could exacerbate this, as models have difficulties reproducing clear sky conditions (Lacagnina and Selten 2014). The resolution for GCMs often do not allow sub-grid scale convective systems and their associated clouds to be resolved. More generally, particularly in mid-latitude continents, climatological biases in both clouds and precipitation persist in major GCMs (Rio et al., 2019). Specifically for EC-Earth, it has been shown that there are too many clouds in this model that are optically thick but too little clouds that are optically thin (Lacagnina and Selten 2014). Thus, this way, a relatively small bias in the upper-level horizontal wind fields could propagate via vertical wind and cloud scheme, into more substantial biases at the surface.

920

**Deleted:** some ...ersistent extreme events such as heatwaves and heavy ... [27]

**Deleted:** circumboreal

**Deleted:** ...with a focus on the characteristics of boreal summer wave-5 (corr. 0.90) and wave-7 (corr. 0.83), wave ... [28]

**Deleted:** -7 events ...re well captured in different climate models in terms of their climatology and ...riability. The phase-locking behaviour..., in particular for wave-5 and wave-7, is captured. Both amplitude and week-to-week variability, in terms of standard deviations, are reasonably well reproduced in all models for all relevant wave numbers. ... [29]

**Deleted:** MMM n.s.d. ...omposites and bias metrics forfor ...the upper-level wave (v250) are 0.99 and 0.91 ...uring wave-5 and wave-7 events,...showing...that the wave's ...mplitude and patterns...are well-captured. Although the upper-level wind flows are satisfactorily reproduced across all models, their associated surface meteorological imprints ...anomalies in (...surface variables (temperature, and precipitation and sea level pressure) during high-amplitude wave-5 and wave-7 high amplitude ...vents is ... [30]

**Deleted:** 0.71 & 0.63 for t2m and 0.63 & 0.74 for prcp ...n wave-5 and wave-7 events respectively... These model biases can be largely corrected by nudging the upper-level atmosphere. For instance, the n.s.d.s for the t2m, prcp, and msip improve approximately by a factor in the range of 1.4 to 1.6 for wave-5 and wave-7 events. surface temperature field during high amplitude wave-5 (wave-7) events increase from 0.71 (0.63) to 0.99 (1.06), for precipitation from 0.63 (0.74) to 1.05 (1.04), and for sea level pressure from 0.69 (0.72) to 0.97 (1.0). ... [31]

**Deleted:** The same scale...uch reductions in errors ...ias metrics are not observed when prescribing the soil moisture. This implies that a ...hen removing a relatively small bias in the upper atmospheric levels (by nudging the circulation), this removes can result in big the relatively large biases in surface weather conditions ...anomalies and related ...relevant for extremes events... A full analysis of the underlying reasons is outside the scope of this paper, but here we discuss some potential mechanisms. First, nudging zonal (u) and meridional (v) winds in the upper-atmosphere, strongly constrains the large-scale vertical wind component ( $\omega$ ) which is a key input for cloud parameterization schemes. In models, large-scale vertical wind is primarily defined by divergence in the horizontal wind fields, ensuring mass conservation, and thus nudging u and v will also effectively nudge  $\omega$ . Likewise, biases in u and v will propagate in  $\omega$  and can then have a strong, possibly (...on-linear,...)impact on the amount of clouds in models (Satoh et al., 2019; Rio et al., 2019). Regions with anomalously high pressure due to the circumboreal associated with a quasi-stationary Rossby wave, will have pronounced subsidence in ERA5 but this can be disturbed in...s likely too weak in the models. As a consequence, the models are likely to ... [32]

**Deleted:** more ...azieri ... [33]

**Deleted:** with ...s models having...difficulties reproducing clear sky conditions (Lacagnina and Selten 2014). The resolution for GCMs often do not allow sub-grid scale convective systems and their associated clouds to be resolved. It is also highlighted that...ore generally, particularly in mid-latitude continents, climatological biases in both clouds and precipitation persist in major GCMs (Rio et al., 2019). One study s...pecifically for EC-Earth, focused on clouds and radiative fluxes in EC-Earth and revealed ...t has been shown ... [34]

While previous work has indicated that soil moisture can have pronounced effects on quasi-stationary Rossby waves, including circumglobal waves (Koster et al., 2016; Teng et al., 2019), our analyses show that adjusting for soil moisture biases (by prescribing soil moisture) has little effect on the representation of circumglobal waves and their associated surface anomalies. These differences could arise from different time-scales and/or experiment set-ups. Earlier studies focused mainly on monthly to seasonal mean responses while we analyze weekly timescales. In addition, Teng et al. (2019) apply a very strong soil moisture anomaly by setting it to zero over the western US, a region to which the climatological circumglobal wave might be particularly sensitive. In contrast, in our prescribed soil moisture experiments, the soil moisture is set to more realistic values, substantially larger than zero, coming from the model's land component forced by atmospheric fields from reanalysis. Our experiments thus represent much smaller forcings than those of Teng et al. (2019).

To be clear, our results are not questioning the importance of soil moisture as a prime driver of summer surface temperature extremes in various regions throughout the mid-latitudes. Rather, our study shows that prescribing the soil moisture in the models has little effect on surface variables and upper-level variables during high-amplitude wave events. Several studies have shown that soil moisture can play an important role in maintaining large-scale circulation anomalies associated with extremely warm and dry conditions (e.g. Erdenebat and Sato, 2018). In particular, under future climate change reduced soil moisture can lead to a higher probability of heatwaves in Europe during summer via interactions between the land surface and the atmosphere (e.g. Seneviratne et al., 2006). This, however, does not say anything about the imprint of soil moisture biases on biases in near-surface climate in relation to the Rossby wave events investigated in our study. Apparently, it is the state of the atmosphere, i.e. circulation or clouds and precipitation, that governs the model biases in near-surface climate and not so the state of the land surface. Further, in the interpretation of our results, one should be wary that in our prescribed soil moisture runs (AISF/AFSF), we prescribe the 'approximately observed' soil moisture conditions (and not e.g. soil moisture climatology). This implies that the turbulent heat fluxes in AISF/AFSF still depend on this prescribed soil moisture condition. This means that during for example the heatwave period in Russia in 2010, the prescribed soil moisture will be anomalously dry, which will result in strong sensible heat fluxes.

#### 4.2 Limitations and outlook

As with any choice of circulation metrics, our approach based on Fourier analyses of the zonally oriented wave component has its limitations. This approach implies that if a particular wavelength is pronounced in only one part of the hemisphere, this can result in a high-amplitude FFT signal. Thus, high-amplitude waves (as defined by our metrics) do not necessarily have to be circumglobal. They can either result from a circumglobal wave pattern or a pronounced regional wave pattern. Still, the fact that we find pronounced and significant wave-patterns in our composite analyses reveals that those reflect preferred wave positions. In particular, wave 5 and wave 7 are subject to this phase-locking behavior. Whenever those quasi-stationary waves

- Deleted: ption
- Deleted: nor
- Deleted: imprint
- Deleted: , or, at least not on the anomaly these events produce.
- Deleted: ours
- Deleted: d
- Deleted: in
- Deleted: , they
- Deleted: prescribed
- Deleted: as zero at specific locations
- Deleted: circumglobal wave
- Deleted: , whereas i
- Deleted: soil moisture is not set to zeros. Instead,
- Deleted: forced
- Deleted: s
- Deleted: prescribing the soil moisture to zero as done in
- Deleted:
- Formatted: Space Before: 12 pt, After: 12 pt
- Deleted: Another aspect to consider, when it comes to interpreting the results, is that we do not intend to undermine the importance
- Deleted: But r
- Deleted: suggests
- Deleted: improving
- Deleted: representation
- Deleted: ve
- Deleted: correcting the overall model biases
- Formatted ... [36]
- Formatted ... [37]
- Formatted ... [38]
- Formatted ... [39]
- Formatted ... [40]
- Formatted ... [41]
- Formatted ... [42]
- Deleted: On the one hand, our analyses suggest that soil moisture
- Formatted ... [44]
- Deleted: moisture conditions
- Deleted: It suggests that once the atmosphere is nudged, the sur
- Formatted ... [46]
- Deleted: Recent work has shown that the individual extreme events
- Deleted: ¶

130 grow in amplitude, they tend to do so in the same longitudinal phase position thereby causing temperature and precipitation  
 135 anomalies in the same geographical regions. This has been reported before for observational data, highlighting the risks this  
 creates for multiple breadbasket failures (Kornhuber et al, 2020). The prime motivation of our study is to see how well climate  
 models reproduce these waves, and to that end our FFT-based metric is useful. Further, the number of high-amplitude waves  
 in ERA5 might be under-sampled which might lead to inconsistencies between models and ERA5. Since we use five ensemble  
 members for the AISI experiment, the amount of data is larger by a factor of five for the models compared to ERA5. As for  
 the atmospheric nudging experiments, from the nudging vertical profile, it can be observed that in CESM and MIROC, the  
 nudging intensity is identical, whereas in EC-Earth the nudging strength is weaker between 700hPa to 400hPa. However, we  
 do not think that these differences between exact model setup and potential under-sampling in ERA-5 has a large effect on our  
 main findings.

140 Our findings have implications for climate model projections of persistent summer weather extremes in the key affected  
 regions. Kornhuber et al. (2020) identified hotspots that are affected by summertime amplified wave-5 (Central North America,  
 Eastern Europe, and Eastern Asia) and wave-7 (Western Central North America, Western Europe and Western Asia) patterns.  
 These regions are sensitive to simultaneous heat extremes, and to exacerbate the situation, some identified regions are also  
 145 considered as global breadbasket regions. In summers, when wave-5 or wave-7 events persist more than two weeks, the average  
 reduction in crop production is 4% and even up to 11% on regional level (Kornhuber et al., 2020). In our study, for wave-5  
 and wave-7 events, all the aforementioned key regions are identified in our three models in terms of positive near-surface  
 temperature anomalies. This gives more confidence in that those state-of-the-art climate models can be used to study present  
 and future agricultural risks associated with such wave patterns. Since the strength of the near-surface temperature anomalies  
 150 is underestimated, the climate models are likely to underestimate heatwaves as well. A potential way to adjust for this is to  
 establish statistical links between upper-level atmospheric flows to near-surface temperatures based on observational data.  
 Then use this statistical link to adjust the effect of upper-level atmospheric circulation changes in climate models under future  
 scenarios for heatwave risks. This approach is likely to be fruitful as our analyses suggest that upper-level waves are well  
 represented across models. In addition, it will be important to assess how upper-level wave patterns change under future  
 155 greenhouse gas forcing, in terms of position, strength and persistence, and how that would effect surface extremes.

## 5 Summary and Conclusions

Our validation study shows that upper-level wave characteristics are reasonably well reproduced in three GCMs in historic  
 AMIP runs with MMM of n.s.d. for wave-5 and wave-7 events being 0.99 and 0.91. Both the climatology and phase-locking  
 behaviors are captured in models for wave numbers 5 and 7, as the MMM correlation values are 0.90 and 0.83. Surface  
 160 temperature anomalies associated with amplified wave-5 and wave-7 patterns are weaker in models as compared to ERA5

**Deleted:** One caveat of the Fast Fourier Transform (FFT) method applied in this study is that the results return circumglobal Rossby waves patterns. Since the analysis is done its on the hemispheric scale, some local high amplitude wave patterns can also be accounted as circumglobal. blocking events that are not extensive in spatial scale, might not be accounted for. Depending on the stationarity of the dataset, the results can also differ substantially with FFT method. The local signal is ignored as the input data for FFT method is the meridional average of wind v250 field.

**Deleted:** Some

**Deleted:** small

**Deleted:** reanalysis data can arise from the under-sampling issue in ERA5

**Deleted:** there

**Deleted:** are

**Deleted:** used in the analysis are five times bigger

**Deleted:** than

**Deleted:** for

**Deleted:** This can result some differences in the v250 field

**Deleted:** patterns

**Deleted:** the

**Deleted:** ,

**Deleted:** for

**Deleted:** positive

**Deleted:** allows us to have

**Deleted:** the

**Deleted:** ,

**Deleted:** not only for the accurate representation of upper-level atmospheric circulation, but also for the accuracy of the associated hotspots at the surface

**Deleted:** atmosphere

**Deleted:** slow

**Deleted:** , i.e. an emergent constraint

**Deleted:** the large-scale circulation

**Deleted:** and strength change

**Deleted:** that

**Deleted:** can lead to changes in the

**Deleted:** events

**Deleted:**

**Deleted:** are

**Deleted:** the

**Deleted:** but have

**Deleted:** weaker anomalies

**Deleted:** the

205 reanalysis data. This bias in surface temperature anomalies during high amplitude wave-5 and wave-7 events is effectively removed when nudging the mid-to-upper level atmosphere.

- Deleted: e
- Deleted: MMM n.s.d. for the
- Deleted: field
- Deleted: increase from 0.71 and 0.63 to 0.99 and 1.06 just by
- Deleted: surface
- Deleted: most
- Deleted: is poorly estimated among all variables
- Deleted: add
- Deleted: much improvement for
- Deleted: In the case of v250 and mslp, it even made the representation of wave-5 and wave-7 events worse. This is likely due to model tuning issues.
- Deleted: in
- Deleted: runs
- Deleted: and
- Deleted: T
- Deleted: model
- Deleted: imprints
- Deleted: component of the model for the mid latitudes
- Deleted: The soil moisture feedback also explains some bias but this is minor compared to the atmospheric part.
- Deleted: ¶

In summary, for the meteorological variables analyzed in this study, we find that:

- Overall, v250 is the accurately represented and precipitation has the largest biases for both wave-5 and wave-7 events.
- Prescribing soil moisture does not improve the representation of surface anomalies in t2m and prcp.
- Nudging the upper-level atmosphere indicates that this is likely the prime origin of surface anomaly biases. We observe significant improvements from AISI and AISF runs to AFSI runs across all models and all variables.

1215 We conclude that the relatively pronounced bias in the surface anomalies for amplified wave events, mainly originates from smaller biases in the upper-level atmospheric circulation. Our study suggests that climate models can be used to study present and future wave characteristics, but that care should be taken when analyzing the associated surface extremes.

1220 Code and data availability. The code and data can be made available by the authors upon request.

Author contributions. FL, DC, and FS designed the analysis with input from KK. FL ran the EC-Earth3 simulations with technical help from FS, WM, PLS, and TR. HS ran the interactive and atmosphere nudged simulations with MIROC5. DT and HK ran the soil moisture nudged simulations with MIROC5. KW ran the CESM1.2 model simulations with technical support by Mathias Hauser. FL analyzed the results from all models. All authors contributed to the discussion of results. FL prepared the manuscript with contributions from all co-authors.

Deleted: 460

Competing interests. The authors declare that they have no conflict of interest.

1230 Acknowledgements. EC-Earth3 simulations were contributed by VU Amsterdam and KNMI. The MIROC5 simulations were contributed by NIES Japan and University of Tokyo. CESM1.2 simulations were contributed by ETH Zurich. The authors thank editor Dr. Irina Rudeva and three anonymous reviewers for their constructive and insightful comments and suggestions to the manuscript. The authors would like to thank Mathias Hauser and Emanuel Dutra for their help in the discussions for the preparation of soil moisture prescription data and the applications in the models. FL, DC, and FS acknowledge VIDI-award from Netherlands Organization for Scientific Research (NWO) (Persistent Summer Extremes “PERSIST” project:

Moved (insertion) [1]

016.Vidi.171.011). KK was partially supported by the NSF project NSF AGS-1934358.KW and SIS acknowledge funding  
1260 from the European Research Council (ERC) (“DROUGHT-HEAT” project, Grant 617518). HS was supported by the  
Integrated Research Program for Advancing Climate Models (JPMXD0717935457). The MIROC5 simulations were  
performed by using Earth Simulator in JAMSTEC and the NEC SX in NIES. WM is supported through the Swedish strategic  
research area Modelling the Regional and Global Earth system (MERGE). H.K acknowledges the National Research  
Foundation of Korea (NRF) grant Funded by the Korea Government (MSIT)(2021H1D3A2A03097768).

1265

**Moved up [1]:** The authors would like to thank Mathias Hauser and Emanuel Dutra for their help in the discussions for the preparation of soil moisture prescription data and the applications in the models. ¶

1270

**References**

Barriopedro, D., Fischer, E. M., Luterbacher, J., Trigo, R. M., and Garcia-Herrera, R.: “The Hot Summer of 2010 : Map of Europe.” *Science* 332 (April): 220–24, doi: 10.1126/science.1201224, 2011.

Benjamini, Y., and Hochberg, Y.: " Controlling the false discovery rate: a practical and powerful approach to multiple testing". *Journal of the Royal Statistical Society Series B*, **57**, 289-300, doi: <http://www.jstor.org/stable/2346101>, 1995.

Branstator, G.: “Circumglobal Teleconnections, the Jet Stream Waveguide, and the North Atlantic Oscillation.” *Journal of Climate* 15 (14): 1893–1910, doi: 10.1175/1520-0442(2002)015<1893:CTTJSW>2.0.CO;2 2002b. 2002a, 2002.

Branstator, G., and Teng, H.: “Tropospheric Waveguide Teleconnections and Their Seasonality.” *Journal of the Atmospheric Sciences* 74 (5): 1513–32, doi: 10.1175/JAS-D-16-0305.1, 2017.

Di Capua, G., Kretschmer, M., Donner, R.V., van den Hurk, B., Vellore, R., Krishnan, R., and Coumou, D.: “Tropical and Mid-Latitude Teleconnections Interacting with the Indian Summer Monsoon Rainfall: A Theory-Guided Causal Effect Network Approach.” *Earth System Dynamics* 11 (1): 17–34, doi: 10.5194/esd-11-17-2020, 2020.

Cucchi, M., Weedon, G. P., Amici, A., Bellouin, N., Lange, S., Schmied, H. M., Hersbach, H., and Buontempo, C.: “WFDE5: Bias-Adjusted ERA5 Reanalysis Data for Impact Studies.” *Earth System Science Data* 12 (3): 2097–2120, doi: 10.5194/essd-12-2097-2020, 2020.

Davini, P., and D’Andrea, F.: “From CMIP3 to CMIP6: Northern Hemisphere Atmospheric Blocking Simulation in Present and Future Climate.” *Journal of Climate* 33 (23): 10021–38, doi: 10.1175/jcli-d-19-0862.1, 2020.

- Dee, D. P., Uppala, S. M., Simmons, A. J., Berrisford, P., Poli, P., Kobayashi, S., Andrae, U., Balmaseda, M. A., Balsamo, G., Bauer, P., Bechtold, P., Beljaars, A. C. M., van de Berg, L., Bidlot, J., Bormann, N., Delsol, C., Dragani, R., Fuentes, M., Geer, A. J., Haim-berger, L., Healy, S. B., Hersbach, H., Hólm, E. V., Isaksen, I., Kållberg, P., Köhler, M., Matricardi, M., McNally, A. P., Monge-Sanz, B. M., Morcrette, J.-J., Park, B.-K., Peubey, C., de Rosnay, P., Tavolato, C., Thépaut, J.-N., and Vitart, F.: The ERA-Interim reanalysis: configuration and performance of the data assimilation system, *Quarterly Journal of the Royal Meteorological Society*, 137, 553–597, <https://doi.org/10.1002/qj.828>, 2011.
- Ding, Q., and Wang, B.: “Circumglobal Teleconnection in the Northern Hemisphere Summer.” *Journal of Climate* 18 (17): 3483–3505, doi: 10.1175/JCLI3473.1, 2005.
- Döscher, R., Acosta, M., Alessandri, A., Anthoni, P., Arneth, A., Arsouze, T., Bergmann, T., et al.: “The EC-Earth3 Earth System Model for the Climate Model Intercomparison Project 6.” *Geoscientific Model Development Discussions*, no. February: 1–90, doi: 10.5194/gmd-2020-446, 2021.
- Erdenebat, E., & Sato, T.: “Role of soil moisture-atmosphere feedback during high temperature events in 2002 over Northeast Eurasia.” *Progress in Earth and Planetary Science*, 5(1), 1-15, doi: 10.1186/s40645-018-0195-4, 2018.
- Eyring, V., Bony, S., Meehl, G. A., A. Senior, C., Stevens, B., J. Stouffer, R., and Taylor, K. E.: “Overview of the Coupled Model Intercomparison Project Phase 6 (CMIP6) Experimental Design and Organization.” *Geoscientific Model Development* 9 (5): 1937–58, doi: 10.5194/gmd-9-1937-2016, 2016.
- Garfinkel, C. I., White, I., Gerber, E. P., Jucker, M. and Erez, M.: “The Building Blocks of Northern Hemisphere Wintertime Stationary Waves.” *Journal of Climate* 33 (13): 5611–33, doi: 10.1175/jcli-d-19-0181.1, 2020.
- Gates, W. L., Boyle, J. S., Covey, C., G. Dease, C., Doutriaux, C. M., Drach, R. S., Fiorino, M, et al. : “An Overview of the Results of the Atmospheric Model Intercomparison Project (AMIP I).” *Bulletin of the American Meteorological Society*, doi: 10.1175/1520-0477 (1999)080<0029:AOOTRO> 2.0. CO;2, 1999.
- Hersbach, H., Bell, B., Berrisford, P., Hirahara, S., Horányi, A., Muñoz-Sabater, J., Nicolas, J., et al.: “The ERA5 Global Reanalysis.” *Quarterly Journal of the Royal Meteorological Society* 146 (730): 1999–2049, doi:10.1002/qj.3803, 2020.
- Hoskins, B. J., and Ambrizzi, T.: “Rossby Wave Propagation on a Realistic Longitudinally Varying Flow.” *Journal of the Atmospheric Sciences* 50 (12), doi: 10.1175/1520-0469(1993)050<1661:RWPOAR>2.0.CO;2, 1993.
- Huntingford, C., Mitchell, D., Kornhuber, k., Coumou, D., Osprey, S., and Allen, M.: “Assessing Changes in Risk of Amplified Planetary Waves in a Warming World.” *Atmospheric Science Letters*, no. May 2018: 1–11, doi: 10.1002/asl.929, 2019.
- Hurrell, J. W., Holland, M. M., Gent, P. R., Ghan, S., Jennifer E. K., Kushner, P. J., Lamarque, J. F., et al.: “The Community Earth System Model: A Framework for Collaborative Research.” *Bulletin of the American Meteorological Society* 94 (9): 1339–60, doi: 10.1175/BAMS-D-12-00121.1, 2013.
- Jeuken, A. B. M., Siegmund, P. C., Heijboer, L. C., Feichter, J., and Bengtsson, L.: "On the potential of assimilating meteorological analyses in a global climate model for the purpose of model validation", *Journal of Geophysical Research: Atmospheres*, 101, 16 939–16 950, <https://doi.org/10.1029/96JD01218>, 1996.
- Kooperman, G. J., Pritchard, M. S., Ghan, S. J., Wang, M., Somerville, R. C. J., and Russell, L. M.: "Constraining the influence

- of natural variability to improve estimates of global aerosol indirect effects in a nudged version of the Community Atmosphere Model 5", *Journal of Geophysical Research: Atmospheres*, 117, <https://doi.org/10.1029/2012JD018588>, d23204, 2012.
- 1330 Kornhuber, K., Petoukhov, V., Karoly, D., Petri, S., Rahmstorf, S., and D Coumou: "Summertime planetary wave resonance in the Northern and Southern Hemispheres" *Journal of Climate* 30 (16), 6133-6150, doi: <https://doi.org/10.1175/JCLI-D-16-0703.1>, 2017.
- Kornhuber, K., Petoukhov, V., Petri, S., Rahmstorf, S., and Coumou, D.: "Evidence for Wave Resonance as a Key Mechanism for Generating High-Amplitude Quasi-Stationary Waves in Boreal Summer." *Climate Dynamics* 49 (5–6): 1961–79, doi: 10.1007/s00382-016-3399-6, 2017.
- 1335 Kornhuber, K., Coumou, D., Vogel, E., Lesk, C., Donges, J. F., Lehmann, J. and M. Horton, R.: "Amplified Rossby Waves Enhance Risk of Concurrent Heatwaves in Major Breadbasket Regions." *Nature Climate Change* 10 (1): 48–53, doi: 10.1038/s41558-019-0637-z, 2020.
- Kornhuber, K., Osprey, S., Coumou, D., Petri, S., Petoukhov, V., Rahmstorf, S., and Gray, L.: "Extreme Weather Events in Early Summer 2018 Connected by a Recurrent Hemispheric Wave-7 Pattern." *Environmental Research Letters* 14 (5): 054002, doi: 10.1088/1748-9326/ab13bf, 2019.
- 1340 Koster, R. D., Chang, Y., Wang, H., and Schubert, S. D.: "Impacts of Local Soil Moisture Anomalies on the Atmospheric Circulation and on Remote Surface Meteorological Fields during Boreal Summer: A Comprehensive Analysis over North America." *Journal of Climate* 29 (20), doi: 10.1175/JCLI-D-16-0192.1, 2016.
- Krzyżewska, A., and Dyer, J.: "The August 2015 Mega-Heatwave in Poland in the Context of Past Events." *Weather* 73 (7): 207–14, doi: 10.1002/wea.3244, 2018.
- 1345 Lacagnina, C., and Frank S.: "Evaluation of Clouds and Radiative Fluxes in the EC-Earth General Circulation Model." *Climate Dynamics* 43 (9–10), doi: 10.1007/s00382-014-2093-9, 2014.
- Lau, W. K. M., and Kim, K.: "The 2010 Pakistan Flood and Russian Heat Wave: Teleconnection of Hydrometeorological Extremes." *Journal of Hydrometeorology* 13 (1): 392–403, doi: 10.1175/JHM-D-11-016.1, 2012.
- 1350 Martius, O., Sodemann, H., Joos, H., Pfahl, S., Winschall, A., Croci-Maspoli, M., Graf, M., et al.: "The Role of Upper-Level Dynamics and Surface Processes for the Pakistan Flood of July 2010." *Quarterly Journal of the Royal Meteorological Society* 139 (676): 1780–97, doi: 10.1002/qj.2082, 2013.
- McKinnon, K. A., Rhines, A., Tingley, M. P., and Huybers, P.: "Long-Lead Predictions of Eastern United States Hot Days from Pacific Sea Surface Temperatures." *Nature Geoscience* 9 (5): 389–94, doi: 10.1038/ngeo2687, 2016.
- 1355 Petoukhov, V., Petri, S., Rahmstorf, S., Coumou, D., Kornhuber, K., and Schellnhuber, H. J.: "Role of Quasiresonant Planetary Wave Dynamics in Recent Boreal Spring-to-Autumn Extreme Events." *Proceedings of the National Academy of Sciences* 113 (25): 6862–67, doi: 10.1073/pnas.1606300113, 2016.
- Petoukhov, V., Rahmstorf, S., Petri, S., and Schellnhuber, H. J.: "Quasiresonant Amplification of Planetary Waves and Recent Northern Hemisphere Weather Extremes." *Proceedings of the National Academy of Sciences of the United States of*
- 1360

*America* 110 (14): 5336–41, doi: 10.1073/pnas.1222000110, 2013.

Rio, C., Del Genio, A. D., and Hourdin, F.: “Ongoing Breakthroughs in Convective Parameterization.” *Current Climate Change Reports*, doi: 10.1007/s40641-019-00127-w, 2019.

1365 Röthlisberger, M., Frossard, L., Bosart, L. F., Keyser, D., and Martius, O.: “Recurrent Synoptic-Scale Rossby Wave Patterns and Their Effect on the Persistence of Cold and Hot Spells.” *Journal of Climate* 32 (11): 3207–26, doi: 10.1175/JCLI-D-18-0664.1, 2019.

[Seneviratne, S., Lüthi, D., Litschi, M., and Schär, C.: “Land-atmosphere coupling and climate change in Europe.” \*Nature\*: 443, 205–209, doi: 10.1038/nature05095, 2006](#)

Satoh, M., Stevens, B., Judt, F., Khairoutdinov, M., Lin, S., Putman, W. M., and Düben, P.: “Global Cloud-Resolving Models,” *Current Climate Change Reports*, 172–84, doi:10.1007/s40641-019-00131-0, 2019.

1370 Scaife, A. A., Woollings, T., Knight, J., Martin, G., and Hinton, T.: “Atmospheric Blocking and Mean Biases in Climate Models.” *Journal of Climate*, doi: 10.1175/2010JCLI3728.1, 2010.

Screen, J. A., and Simmonds, I.: “Amplified Mid-Latitude Planetary Waves Favour Particular Regional Weather Extremes.” *Nature Climate Change* 4 (8): 704–9, doi: 10.1038/nclimate2271, 2014.

1375 Shepherd, T. G. “Atmospheric Circulation as a Source of Uncertainty in Climate Change Projections.” *Nature Geoscience* 7 (10): 703–8, doi: 10.1038/NGEO2253, 2014.

Taylor, K. E.: “Summarizing Multiple Aspects of Model Performance in a Single Diagram.” *Journal of Geophysical Research Atmospheres* 106 (D7), doi: 10.1029/2000JD900719, 2001.

Taylor, K. E., Stouffer, R. J. and Meehl, G. A.: “An Overview of CMIP5 and the Experiment Design.” *Bulletin of the American Meteorological Society*, doi: 10.1175/BAMS-D-11-00094.1, 2012.

1380 Teng, H., and Branstator, G.: “Amplification of Waveguide Teleconnections in the Boreal Summer.” *Current Climate Change Reports* 5 (4): 421–32, doi: 10.1007/s40641-019-00150-x, 2019.

Teng, H., Branstator, G., Tawfik, A. B., and Callaghan, P.: “Circumglobal Response to Prescribed Soil Moisture over North America.” *Journal of Climate* 32 (14): 4525–45, doi: 10.1175/JCLI-D-18-0823.1, 2019.

1385 Thomson, S. I., and Vallis, G. K.: “Atmospheric Response to SST Anomalies. Part II: Background-State Dependence, Teleconnections, and Local Effects in Summer.” *Journal of the Atmospheric Sciences* 75 (12): 4125–38, doi: 10.1175/JAS-D-17-0298.1, 2018.

Vijverberg, S., Schmeits, M., van der Wiel, K., and Coumou, D.: “Subseasonal Statistical Forecasts of Eastern U.S. Hot Temperature Events.” *Monthly Weather Review* 148 (12), doi: 10.1175/mwr-d-19-0409.1, 2020.

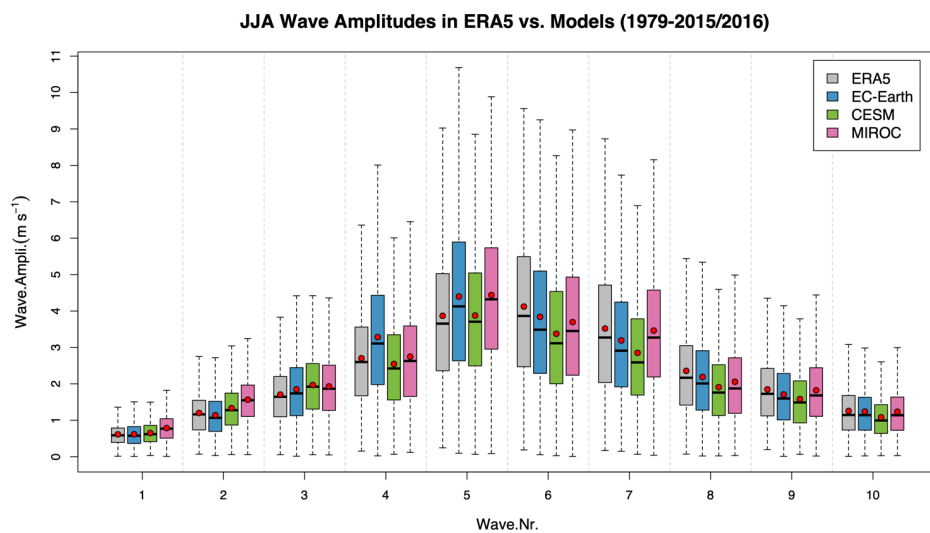
1390 [Vijverberg, S., & Coumou, D.: “The role of the Pacific Decadal Oscillation and ocean-atmosphere interactions in driving US temperature variability.” \*npj Climate and Atmospheric Science\*, 5\(1\): 1-11, doi: 10.1038/s41612-022-00237-7, 2022.](#)

Wang, H., Schubert, S., Koster, R., Ham, Y. G., and Suarez, M.: “On the Role of SST Forcing in the 2011 and 2012 Extreme U.S. Heat and Drought: A Study in Contrasts.” *Journal of Hydrometeorology* 15 (3): 1255–73, doi: 10.1175/JHM-D-13-069.1, 2014.

Deleted: a

- Watanabe, M., Suzuki, T., O'Ishi, R., Komuro, Y., Watanabe, S., Emori, S., Takemura, T., et al.: "Improved Climate Simulation by MIROC5: Mean States, Variability, and Climate Sensitivity." *Journal of Climate* 23 (23): 6312–35, doi: 10.1175/2010JCLI3679.1, 2010.
- 1400 Wehrli, K., Guillod, B. P., Hauser, M., Leclair, M., and Seneviratne, S. I.: "Identifying Key Driving Processes of Major Recent Heat Waves." *Journal of Geophysical Research: Atmospheres* 124 (22): 11746–65, doi: 10.1029/2019JD030635, 2019.
- Wehrli, K., Luo, F., Hauser, M., Shiogama, H., Tokuda, D., Kim, H., Coumou, D., et al.: "The ExtremeX Global Climate Model Experiment: Investigating Thermodynamic and Dynamic Processes Contributing to Weather and Climate Extremes," no. July: 1–31, doi:10.5194/esd-2021-58, 2021.
- 1405 Wills, R. C. J., White, R. H., and Levine, X. J.: "Northern Hemisphere Stationary Waves in a Changing Climate." *Current Climate Change Reports*. Springer, doi: 10.1007/s40641-019-00147-6, 2019.
- Xu, P., Wang, L., Huang, P., and Chen, W.: "Disentangling Dynamical and Thermodynamical Contributions to the Record-Breaking Heatwave over Central Europe in June 2019." *Atmospheric Research* 252 (October 2020): 105446, doi: 10.1016/j.atmosres.2020.105446, 2021.
- 1410 Zscheischler, J., Westra, S., Van Den Hurk, B. J. J. M., Seneviratne, S. I., Ward, P. J., Pitman, A., Aghakouchak, A., et al.: "Future Climate Risk from Compound Events." *Nature Climate Change* 8 (6): 469–77, doi: 10.1038/s41558-018-0156-3, 2018.

1415



1420 **Figure 1: Boxplot for wave amplitudes in AISI climatology runs for climate models EC-Earth, CESM, and MIROC, as well as reanalysis data ERA5 for the period of June, July, and August in 1979-2015/2016. Red dots indicate the mean, and thick black lines represent the median. The lower hinge of each box is Q1 quartile (25th), and the upper hinge for Q3 quartile (75th). The upper bar represents maximal value whereas the lower bar represents minimal value. The outliers are not shown in the plot.**

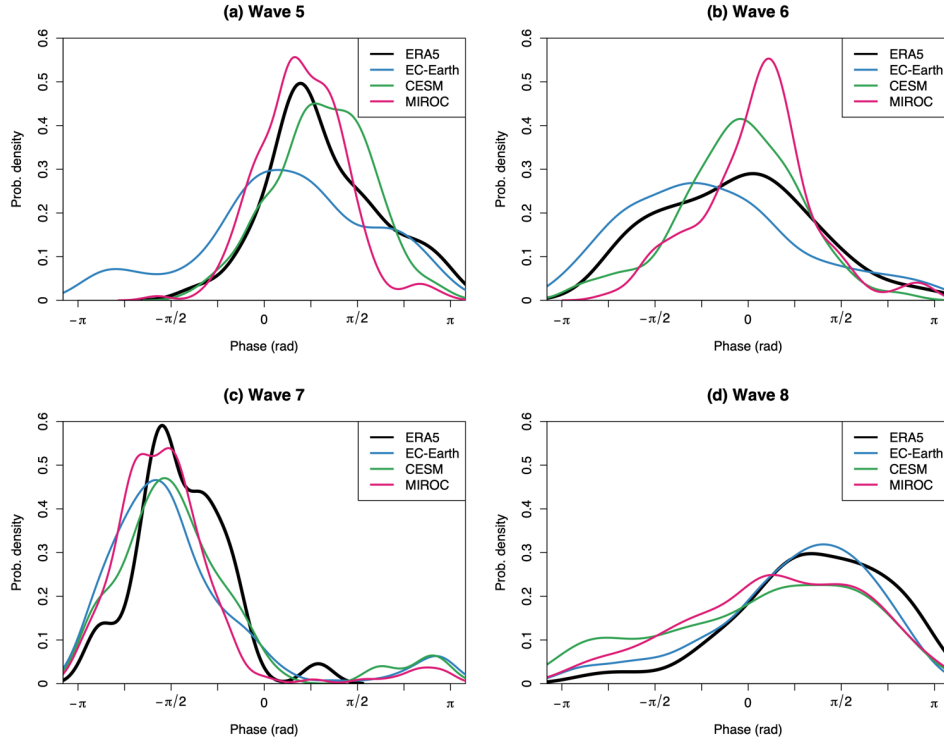
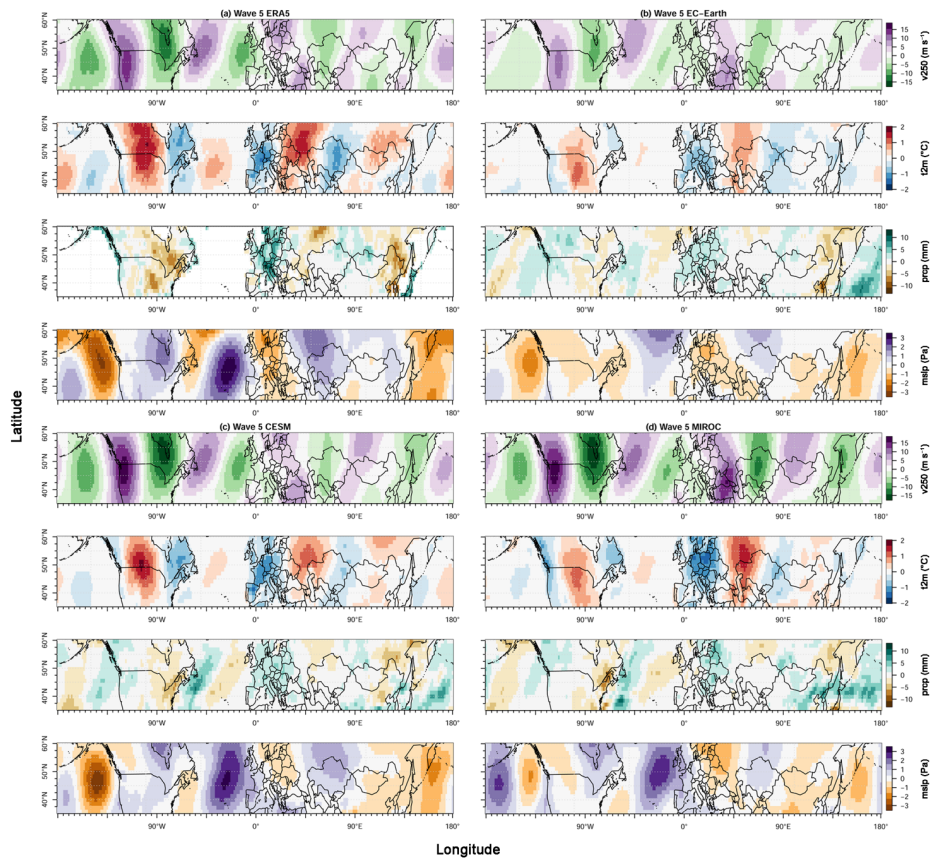


Figure 2: Phase-locking of Rossby waves for JJA ERA5 and model waves 5-8 in control run AISI for high wave amplitude events ( $> 1.5$  s.d.): (a)-(d), Probability density functions of the phase positions of waves 5-8 in ERA5, EC-Earth, CESM, and MIROC during JJA for the period of 1979-2015/2016 (wave 5 (a), wave 6 (b), wave 7 (c), wave 8 (d)). The bandwidth for ERA5 and models are as follows: (a) Wave 5: 0.35(ERA5), 0.40(EC-Earth), 0.25(CESM), 0.22(MIROC), (b) Wave 6: 0.53(ERA5), 0.45(EC-Earth), 0.30(CESM), 0.25(MIROC), (c) Wave 7: 0.25(ERA5), 0.29(EC-Earth), 0.27(CESM), 0.22(MIROC), (d) Wave 8: 0.49(ERA5), 0.39(EC-Earth), 0.52(CESM), 0.46(MIROC).



1435 Figure 3: Composite anomaly plots of weeks with high-amplitude waves-5 events for meridional wind velocity at 250hPa (v250,  
 | absolute field), near-surface temperature (t2m, anomaly), precipitation (prcp, anomaly), and sea level pressure (mslp, anomaly) in  
 ERA5 (a), EC-Earth (b), CESM (c) and MIROC (d) based on control runs AISI.

Deleted: sea level

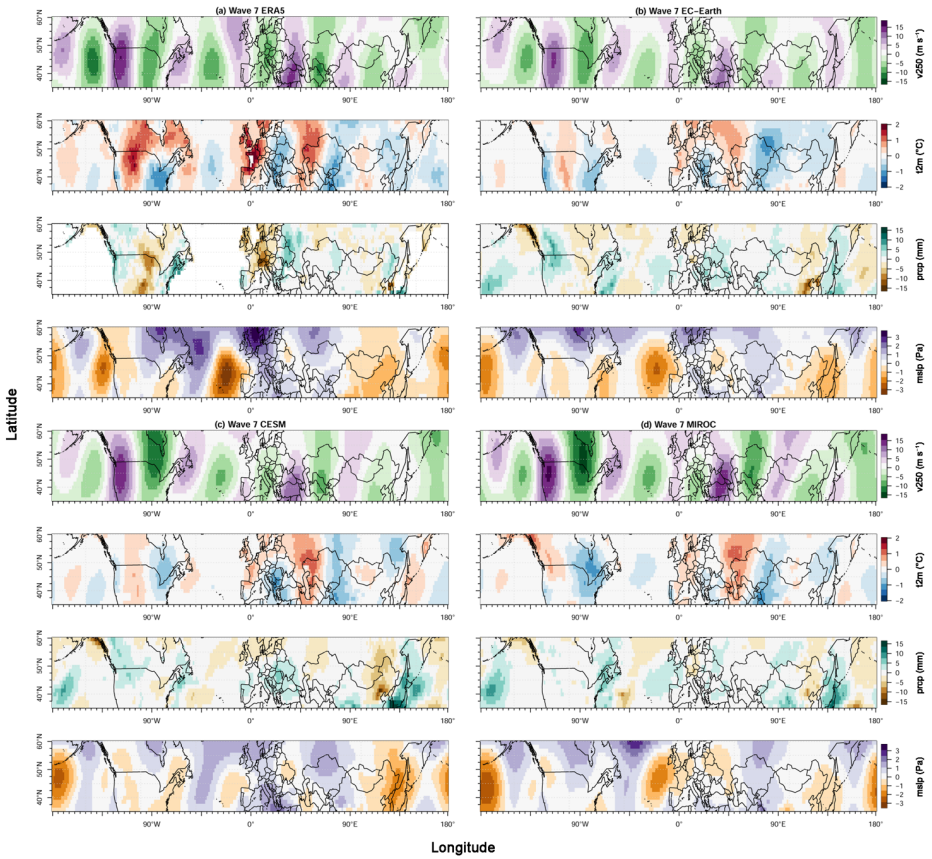
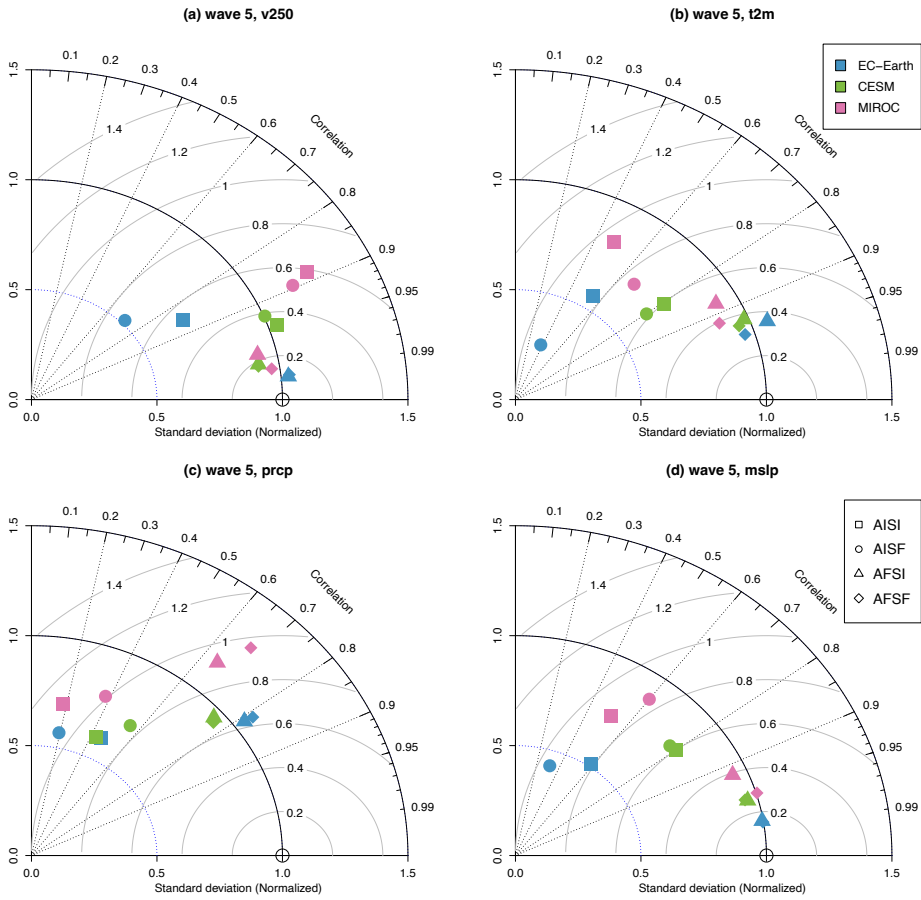


Figure 4: Composite anomaly plots of weeks with high-amplitude waves-7 events for meridional wind velocity at 250hPa (v250, absolute field), near-surface temperature (t2m, anomaly), precipitation (prcp, anomaly), and sea level pressure (mslp, anomaly) in ERA5 (a), EC-Earth (b), CESM (c) and MIROC (d) based on control runs AISI.

Deleted: sea level



**Figure 5:** Taylor Diagram for all experiments in models compared to ERA5 for wave-5 events. For a) V250, b) t2m, c) prcp, and d) mslp, the Taylor diagram presents for each model and each experiment, three statistics: the Pearson correlation (dashed lines); the RMS error (grey contours); and the normalized spatial standard deviation (solid black contours).

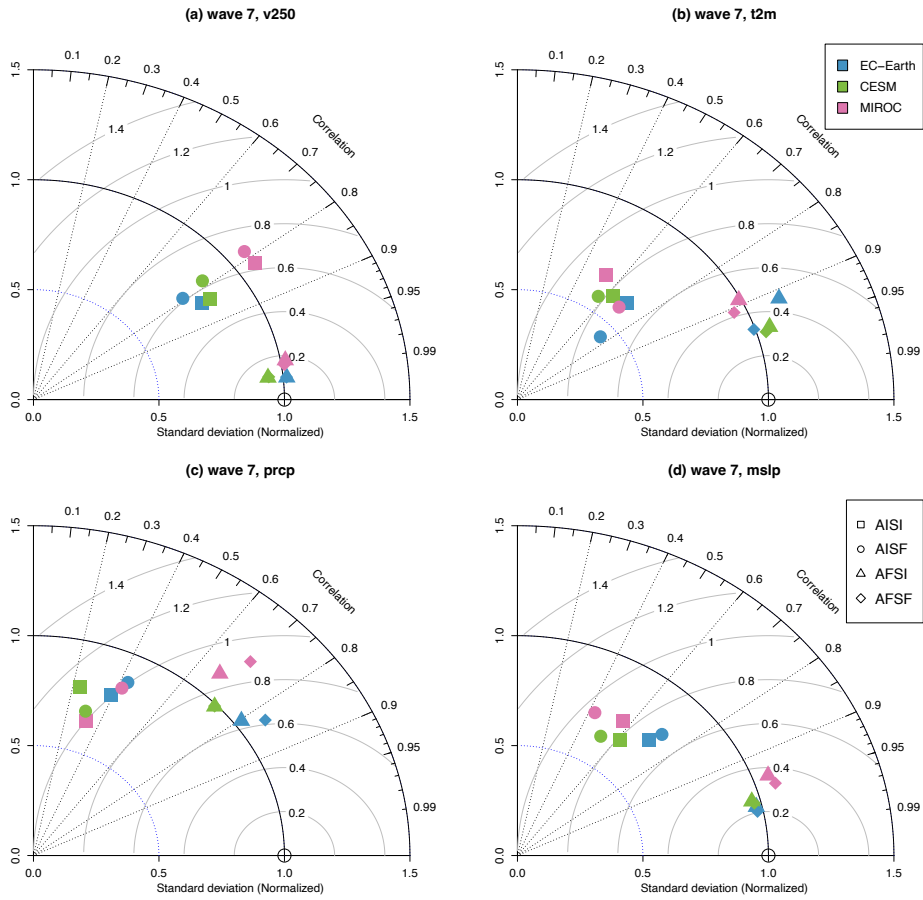


Figure 6: Taylor Diagram for all experiments in models compared to ERA7 for wave-5 event. For a) v250, b) t2m, c) prcp, and d) mslp, the Taylor diagram presents for each model and each experiment, three statistics: the Pearson correlation (dashed lines); the RMS error (grey contours); and the normalized spatial standard deviation (solid black contours).

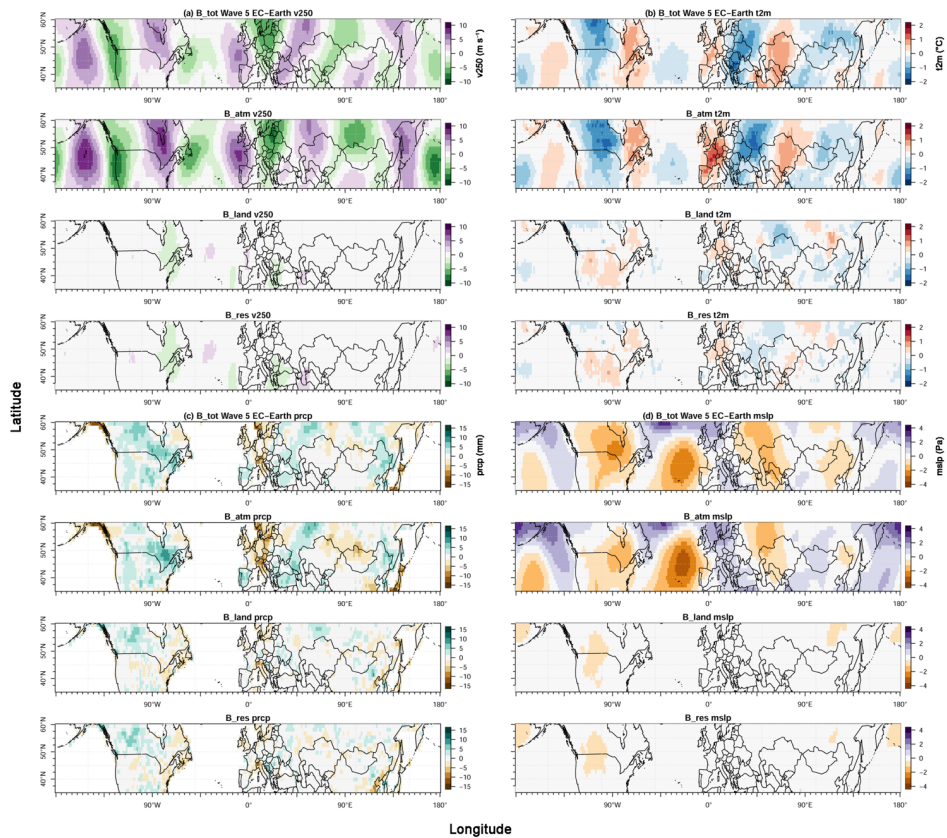


Figure 7: Bias plots for high-amplitude wave-5 events in different experiments for EC-Earth. Total bias(B\_tot), atmospheric bias(B\_atm), land-atmosphere interaction bias (B\_land) and residual bias(B\_res) for meridional wind velocity at 250hPa (a), surface temperature (b), precipitation (c), and ~~sea level~~ pressure (d).

Deleted: sea level

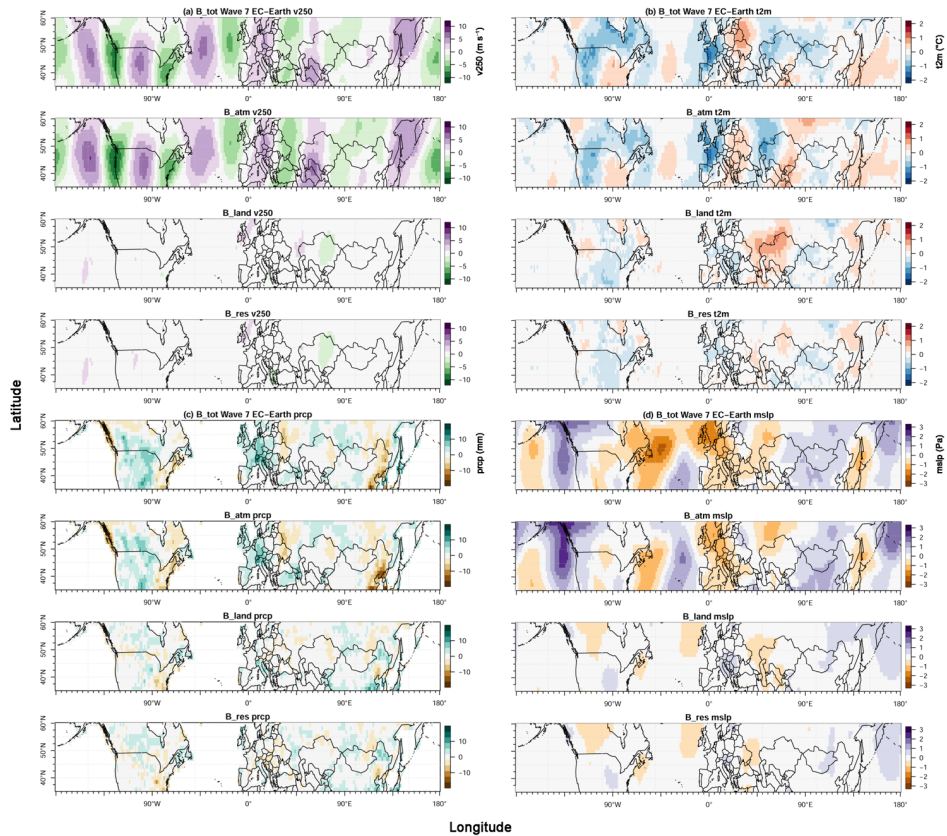


Figure 8: Bias plots for high-amplitude wave-7 events in different experiments for EC-Earth. Total bias(B\_tot), Atmospheric bias(B\_atm), Land-Atm interaction bias(B\_land) and residual bias(B\_res) for meridional wind velocity at 250hPa (a), surface temperature (b), precipitation (c), and ~~sea level~~ pressure (d).

Deleted: sea level

Appendix

Wave5		v250				t2m				prcp				mslp			
Model	EC-Earth	CESM	MIROC	Model Mean	EC-Earth	CESM	MIROC	Model Mean	EC-Earth	CESM	MIROC	Model Mean	EC-Earth	CESM	MIROC	Model Mean	
AISI	0,858	0,945	0,884	0,896	0,552	0,806	0,481	0,613	0,460	0,427	0,179	0,355	0,584	0,801	0,515	0,633	
AISF	0,719	0,926	0,895	0,847	0,375	0,801	0,669	0,615	0,192	0,554	0,377	0,374	0,317	0,777	0,600	0,565	
AFSI	0,995	0,985	0,975	0,985	0,942	0,928	0,878	0,916	0,812	0,756	0,645	0,738	0,987	0,965	0,921	0,958	
AFSF	0,994	0,986	0,989	0,990	0,951	0,936	0,920	0,936	0,814	0,768	0,679	0,754	0,988	0,964	0,959	0,970	
Wave7		v250				t2m				prcp				mslp			
Model	EC-Earth	CESM	MIROC	Model Mean	EC-Earth	CESM	MIROC	Model Mean	EC-Earth	CESM	MIROC	Model Mean	EC-Earth	CESM	MIROC	Model Mean	
AISI	0,837	0,839	0,819	0,832	0,703	0,629	0,528	0,620	0,388	0,236	0,323	0,316	0,704	0,613	0,566	0,628	
AISF	0,791	0,780	0,780	0,784	0,757	0,565	0,693	0,672	0,431	0,301	0,420	0,384	0,723	0,522	0,429	0,558	
AFSI	0,995	0,994	0,984	0,991	0,915	0,950	0,890	0,918	0,804	0,729	0,668	0,734	0,974	0,967	0,939	0,960	
AFSF	0,995	0,994	0,988	0,992	0,947	0,955	0,909	0,937	0,832	0,728	0,700	0,753	0,979	0,970	0,952	0,967	

Table A1: Summary of Model Taylor Diagram correlation values.

Wave5	v250					t2m					prcp					mslp				
Model	EC-Earth	CESM	MIROC	Model Mean	NORM	EC-Earth	CESM	MIROC	Model Mean	NORM	EC-Earth	CESM	MIROC	Model Mean	NORM	EC-Earth	CESM	MIROC	Model Mean	
AISI	3,510	5,168	6,203	4,960	0.994	0.292	0.382	0.424	0.366	0.705	1,746	1,729	2,027	1,834	0.634	0.586	0.916	0.847	0.783	
AISF	2,584	5,012	5,805	4,467	0.895	0.139	0.338	0.367	0.281	0.542	1,646	2,054	2,262	1,987	0.687	0.492	0.906	1.016	0.805	
AFSI	5,133	4,584	4,608	4,775	0.957	0.553	0.509	0.472	0.511	0.985	3,024	2,779	3,322	3,042	1.052	1,138	1,096	1,075	1,103	
AFSF	5,158	4,576	4,826	4,853	0.973	0.499	0.494	0.459	0.484	0.933	3,135	2,731	3,773	3,196	1.105	1,141	1,085	1,148	1,125	
Wave7	v250					t2m					prcp					mslp				
Model	EC-Earth	CESM	MIROC	Model Mean	NORM	EC-Earth	CESM	MIROC	Model Mean	NORM	EC-Earth	CESM	MIROC	Model Mean	NORM	EC-Earth	CESM	MIROC	Model Mean	
AISI	4,162	4,344	5,585	4,697	0.907	0.310	0.304	0.334	0.316	0.631	2,526	2,510	2,064	2,366	0.744	0.818	0.734	0.818	0.790	
AISF	3,894	4,467	5,574	4,645	0.897	0.219	0.285	0.292	0.265	0.530	2,775	2,190	2,669	2,545	0.800	0.877	0.700	0.792	0.790	
AFSI	5,250	4,864	5,276	5,130	0.991	0.570	0.530	0.496	0.532	1.063	3,278	3,150	3,537	3,322	1.044	1,076	1,063	1,170	1,103	
AFSF	5,245	4,883	5,240	5,123	0.990	0.498	0.520	0.476	0.498	0.994	3,532	3,154	3,928	3,538	1.112	1,076	1,072	1,188	1,112	

Table A2: Summary of model standard deviation values.

Wave5	v250					t2m					prcp					mslp				
Model	EC-Earth	CESM	MIROC	Model Mean	NORM	EC-Earth	CESM	MIROC	Model Mean	NORM	EC-Earth	CESM	MIROC	Model Mean	NORM	EC-Earth	CESM	MIROC	Model Mean	
AISI	2,675	1,695	2,942	2,437	0.488	0.446	0.319	0.498	0.421	0.811	2,302	2,425	2,924	2,550	0.882	0.956	0.687	1,025	0.889	
AISF	3,610	1,927	2,600	2,712	0.544	0.497	0.343	0.397	0.412	0.794	2,671	2,251	2,530	2,484	0.859	1,093	0.724	0,995	0.937	
AFSI	0.542	0.944	1,140	0.875	0.175	0.187	0.209	0.257	0.218	0.420	1,771	1,822	2,490	2,027	0.701	0.189	0.303	0,450	0.314	
AFSF	0.586	0.908	0,740	0.745	0.149	0.160	0.197	0.212	0.190	0.366	1,793	1,767	2,468	2,009	0.695	0.187	0.305	0,330	0.274	
Wave7	v250					t2m					prcp					mslp				
Model	EC-Earth	CESM	MIROC	Model Mean	NORM	EC-Earth	CESM	MIROC	Model Mean	NORM	EC-Earth	CESM	MIROC	Model Mean	NORM	EC-Earth	CESM	MIROC	Model Mean	
AISI	2,838	2,813	3,263	2,971	0.574	0.380	0.397	0.442	0.407	0.812	3,076	3,395	2,988	3,153	0.991	0.785	0.872	0,928	0.862	
AISF	3,174	3,267	3,582	3,341	0.645	0.376	0.420	0.372	0.389	0.777	3,062	3,152	2,878	3,031	0.953	0.785	0.949	1,04764	0.927	
AFSI	0.527	0.638	0.935	0.700	0.135	0.231	0.167	0.237	0.212	0.423	1,988	2,262	2,558	2,269	0.713	0.250	0.306	0,510	0.355	
AFSF	0.536	0.645	0.829	0.670	0.129	0.166	0.155	0.215	0.179	0.356	1,908	2,206	2,560	2,224	0.699	0.226	0.304	0,483	0.338	

Table A3: Summary of model RMSE values.

Wave5		v250					
Model	EC-Earth	CESM	MIROC	Model Mean	EC-Earth	CESM	
AISI	0,858	0,945	0,884	0,896	0,552	0,806	
AISF	0,719	0,926	0,895	0,847	0,375	0,801	
AFSI	0,995	0,985	0,975	0,985	0,942	0,928	
AFSF	0,994	0,986	0,989	0,990	0,951	0,936	
Wave7		v250					
Model	EC-Earth	CESM	MIROC	Model Mean	EC-Earth	CESM	
AISI	0,837	0,839	0,819	0,832	0,703	0,629	
AISF	0,791	0,780	0,780	0,784	0,757	0,565	
AFSI	0,995	0,994	0,984	0,991	0,915	0,950	
AFSF	0,995	0,994	0,988	0,992	0,947	0,936	

Deleted:

Wave5		v250				EC-Earth	
Model	EC-Earth	CESM	MIROC	Model Mean	NORM	EC-Earth	CESM
AISI	3,510	5,168	6,203	4,960	0,994	0,292	0,382
AISF	2,584	5,012	5,805	4,467	0,895	0,139	0,338
AFSI	5,133	4,584	4,608	4,775	0,957	0,553	0,509
AFSF	5,158	4,576	4,826	4,853	0,973	0,499	0,494
Wave7		v250				EC-Earth	
Model	EC-Earth	CESM	MIROC	Model Mean	NORM	EC-Earth	CESM
AISI	4,162	4,344	5,585	4,697	0,907	0,310	0,304
AISF	3,894	4,467	5,574	4,645	0,897	0,219	0,285
AFSI	5,250	4,864	5,276	5,130	0,991	0,570	0,530
AFSF	5,245	4,883	5,240	5,123	0,990	0,498	0,520

Deleted:

Wave5		v250				EC-Earth	
Model	EC-Earth	CESM	MIROC	Model Mean	NORM	EC-Earth	CESM
AISI	2,675	1,695	2,942	2,437	0,488	0,446	0,319
AISF	3,610	1,927	2,600	2,712	0,544	0,497	0,343
AFSI	0,542	0,944	1,140	0,875	0,175	0,187	0,209
AFSF	0,586	0,908	0,740	0,745	0,149	0,160	0,197
Wave7		v250				EC-Earth	
Model	EC-Earth	CESM	MIROC	Model Mean	NORM	EC-Earth	CESM
AISI	2,838	2,813	3,263	2,971	0,574	0,380	0,397
AISF	3,174	3,267	3,582	3,341	0,645	0,376	0,420
AFSI	0,527	0,638	0,935	0,700	0,135	0,231	0,167
AFSF	0,536	0,645	0,829	0,670	0,129	0,166	0,155

Deleted:

1495

Wave5		v250			t2m			prcp			mslp		
Model	corr	std	rmse	corr	std	rmse	corr	std	rmse	corr	std	rmse	
AISI	0,896	0,994	0,488	0,613	0,705	0,811	0,355	0,634	0,882	0,633	0,685	0,778	
AISF	0,847	0,895	0,544	0,615	0,542	0,794	0,374	0,687	0,859	0,565	0,704	0,820	
AFSI	0,985	0,957	0,175	0,916	0,985	0,420	0,738	1,052	0,701	0,958	0,965	0,274	
AFSF	0,990	0,973	0,149	0,936	0,933	0,366	0,754	1,105	0,695	0,970	0,983	0,240	
Wave7		v250			t2m			prcp			mslp		
Model	corr	std	rmse	corr	std	rmse	corr	std	rmse	corr	std	rmse	
AISI	0,832	0,907	0,574	0,620	0,631	0,812	0,316	0,744	0,991	0,628	0,717	0,783	
AISF	0,784	0,897	0,645	0,672	0,530	0,777	0,384	0,800	0,953	0,558	0,717	0,842	
AFSI	0,991	0,991	0,135	0,918	1,063	0,423	0,734	1,044	0,713	0,960	1,002	0,323	
AFSF	0,992	0,990	0,129	0,937	0,994	0,356	0,753	1,112	0,699	0,967	1,010	0,307	

Table A4: Summary of Multi-Model Mean Taylor Diagram values.

Wave5		v250			tas	
Model	corr	std	rmse	corr	std	
AISI	0,896	0,994	0,488	0,613	0,705	
AISF	0,847	0,895	0,544	0,615	0,542	
AFSI	0,985	0,957	0,175	0,916	0,985	
AFSF	0,990	0,973	0,149	0,936	0,933	
Wave7		v250			tas	
Model	corr	std	rmse	corr	std	
AISI	0,832	0,907	0,574	0,620	0,631	
AISF	0,784	0,897	0,645	0,672	0,530	
AFSI	0,991	0,991	0,135	0,918	1,063	
AFSF	0,992	0,990	0,129	0,937	0,994	

Deleted:

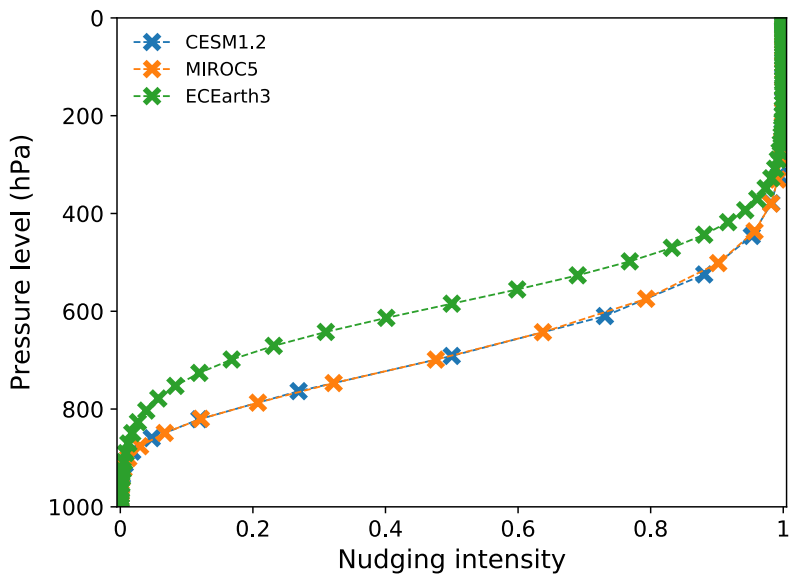
1500

ERA5 s.d.	v250	t2m	prcp	mslp
wave 5	4,990	0,519	2,893	1,144
wave 7	5,177	0,501	3,181	1,101

Table A5: Summary of ERA5 standard deviation values.

ERA5 s.d.	v250	t2m	prcp	i
wave 5	4,990	0,519	2,893	1
wave 7	5,177	0,501	3,181	1

Deleted:



1510 Figure B1. Nudging profile for the three ExtremeX ESMs. The actual pressure levels are marked with an x and joined with lines.  
 1515 The nudging intensity is given from zero (no nudging) to one (fully nudged).

Deleted: (Wehrli et al., 2021, in review). Taken with permission

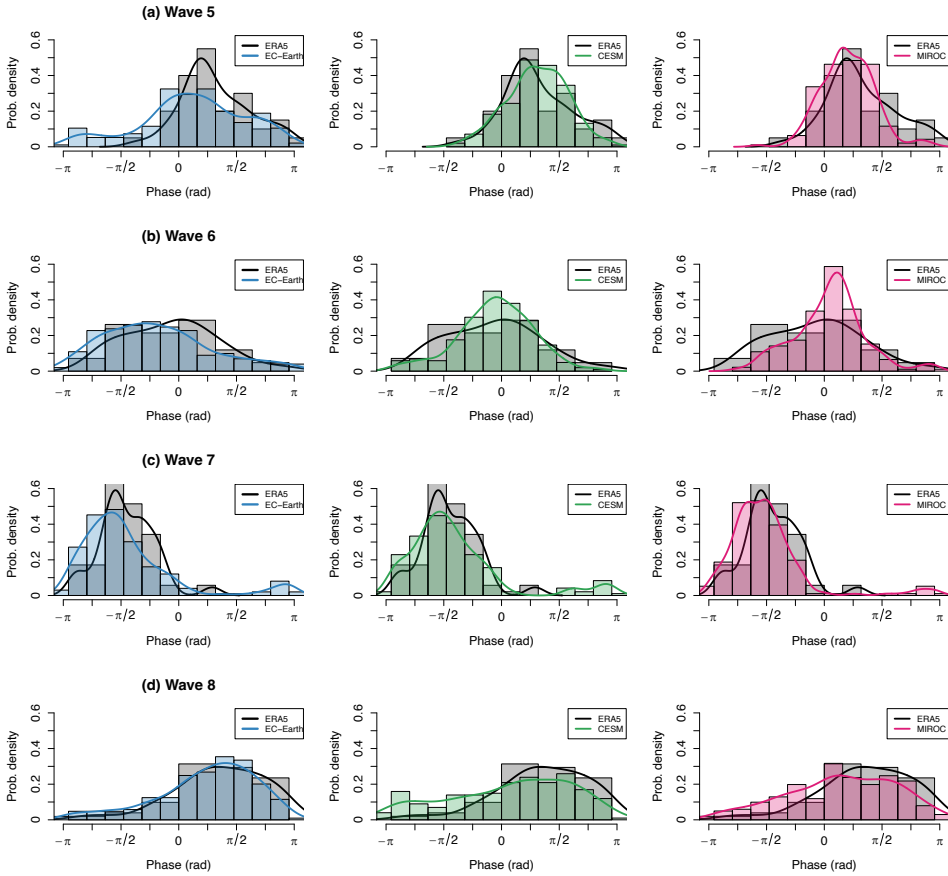


Figure B2. Same as Fig.2 but with histogram added.

Deleted: with

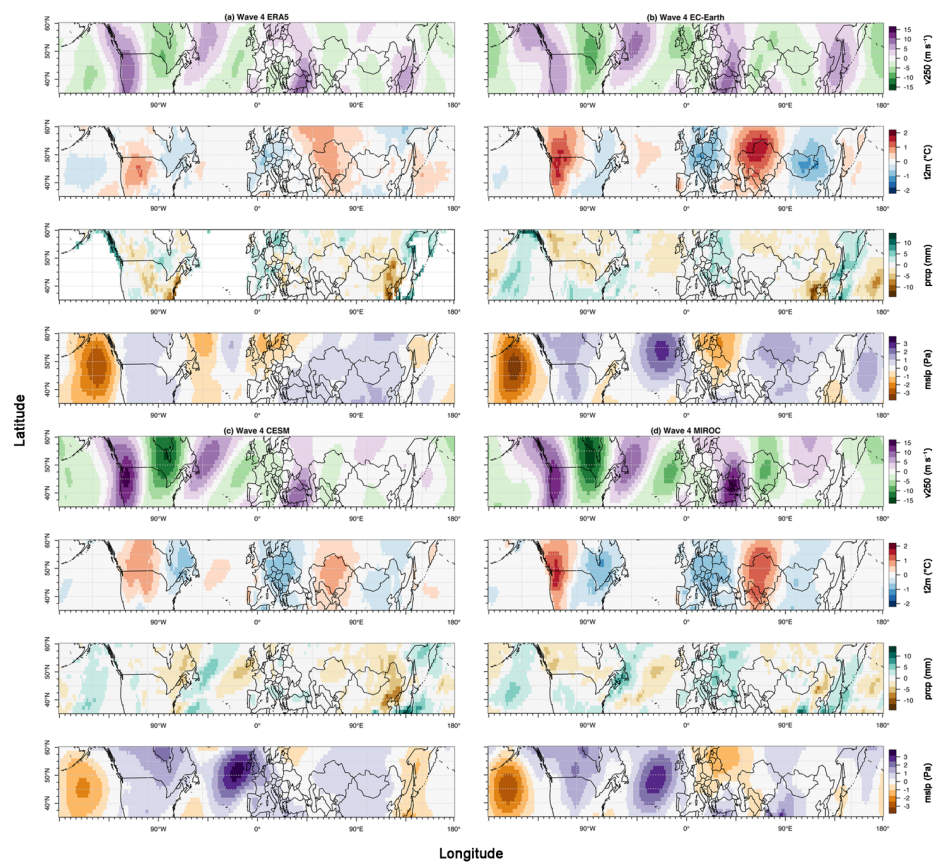


Figure B3: Composite anomaly plots of weeks with high-amplitude wave 4 events for meridional wind velocity at 250hPa ( $v_{250}$ , absolute field), near-surface temperature ( $t_{2m}$ , anomaly), precipitation ( $prcp$ , anomaly), and sea level pressure ( $mslp$ , anomaly) in ERA5 (a), EC-Earth (b), CESM (c) and MIROC (d) based on control runs AISI.

Deleted: s

Deleted: l

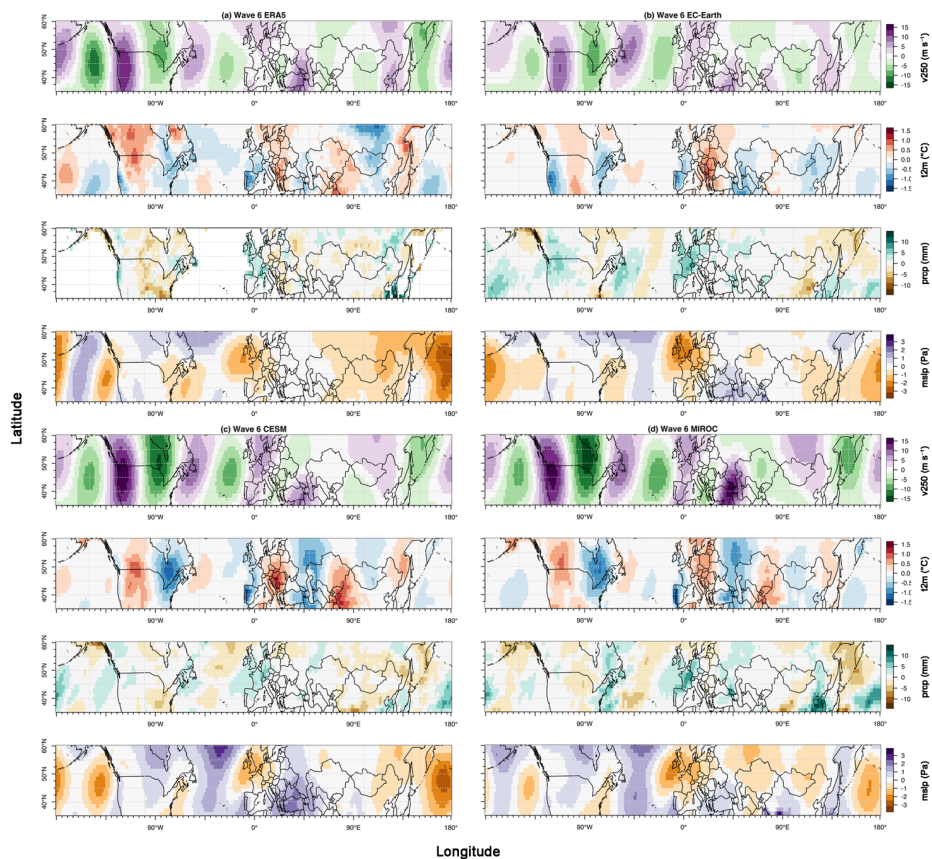


Figure B4: Composite anomaly plots of weeks with high-amplitude wave-6 events for meridional wind velocity at 250hPa ( $v_{250}$ , absolute field), near-surface temperature ( $t_{2m}$ , anomaly), precipitation ( $prcp$ , anomaly), and sea level pressure ( $mslp$ , anomaly) in ERA5 (a), EC-Earth (b), CESM (c) and MIROC (d) based on control runs AISI.

Deleted: s

Deleted: sea level

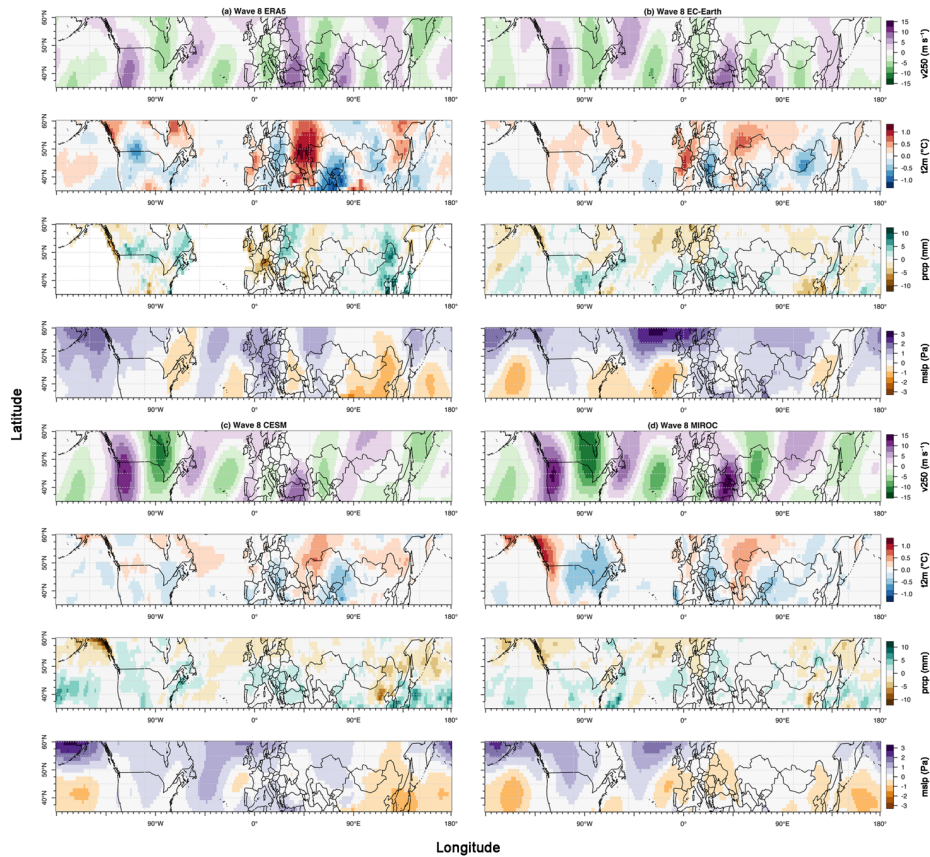
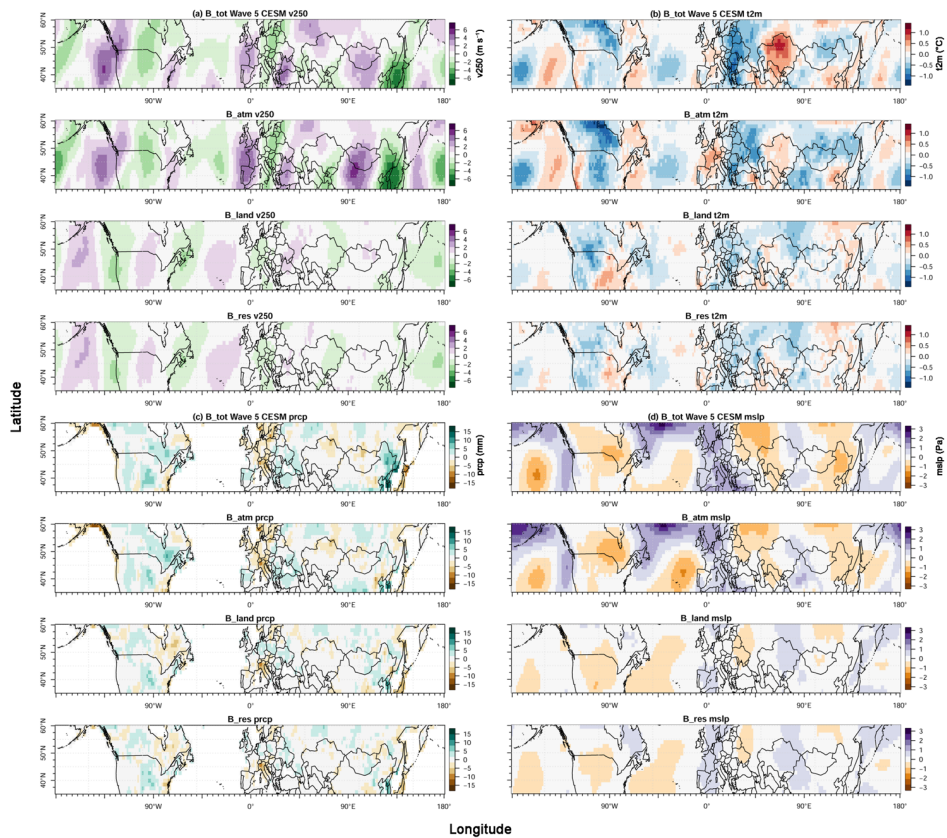


Figure B5: Composite anomaly plots of weeks with high-amplitude wave 8 events for meridional wind velocity at 250hPa ( $v_{250}$ , absolute field), near-surface temperature ( $t_{2m}$ , anomaly), precipitation ( $prcp$ , anomaly), and sea level pressure ( $mslp$ , anomaly) in ERA5 (a), EC-Earth (b), CESM (c) and MIROC (d) based on control runs AISI.

Deleted: s

Deleted: sea level



1555 **Figure B6:** Bias plots for high-amplitude wave-5 events in different experiments for CESM. Total bias( $B_{tot}$ ), atmospheric  
 1560 bias( $B_{atm}$ ), land-atmosphere interaction bias ( $B_{land}$ ) and residual bias( $B_{res}$ ) for meridional wind velocity at 250hPa (a), surface  
 temperature (b), precipitation (c), and **sea level** pressure (d).

Deleted: sea level

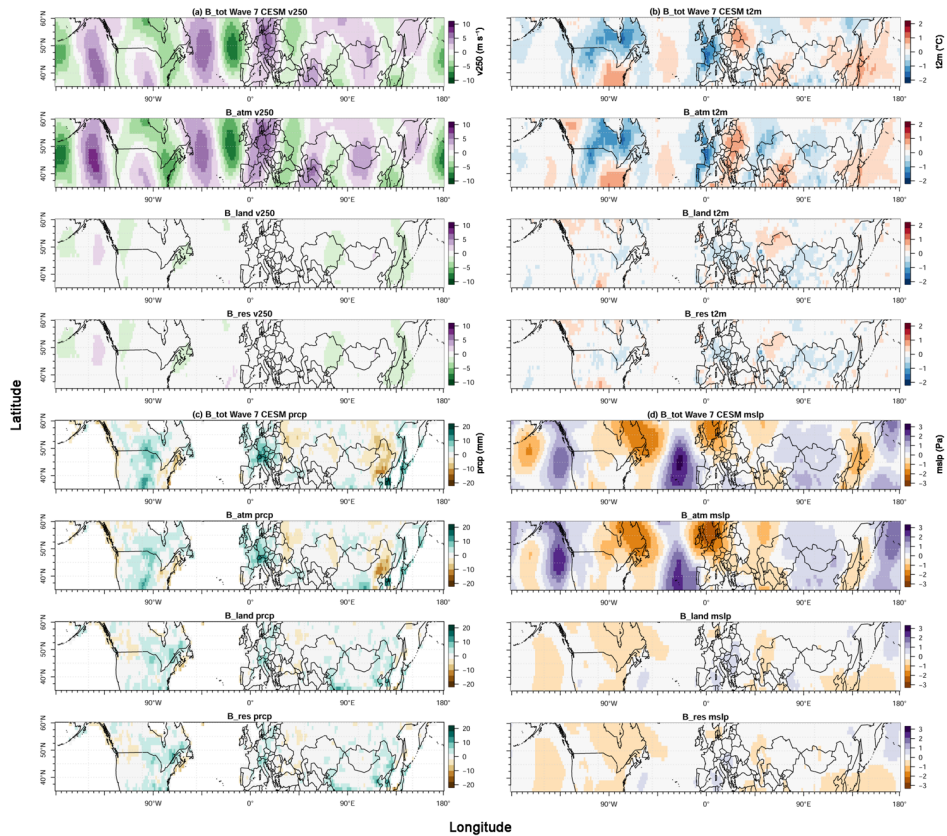


Figure B7: Bias plots for high-amplitude wave-7 events in different experiments for CESM. Total bias( $B_{tot}$ ), Atmospheric bias( $B_{atm}$ ), Land-Atm interaction bias( $B_{land}$ ) and residual bias( $B_{res}$ ) for meridional wind velocity at 250hPa (a), surface temperature (b), precipitation (c), and ~~sea level~~ pressure (d).

Deleted: sea level

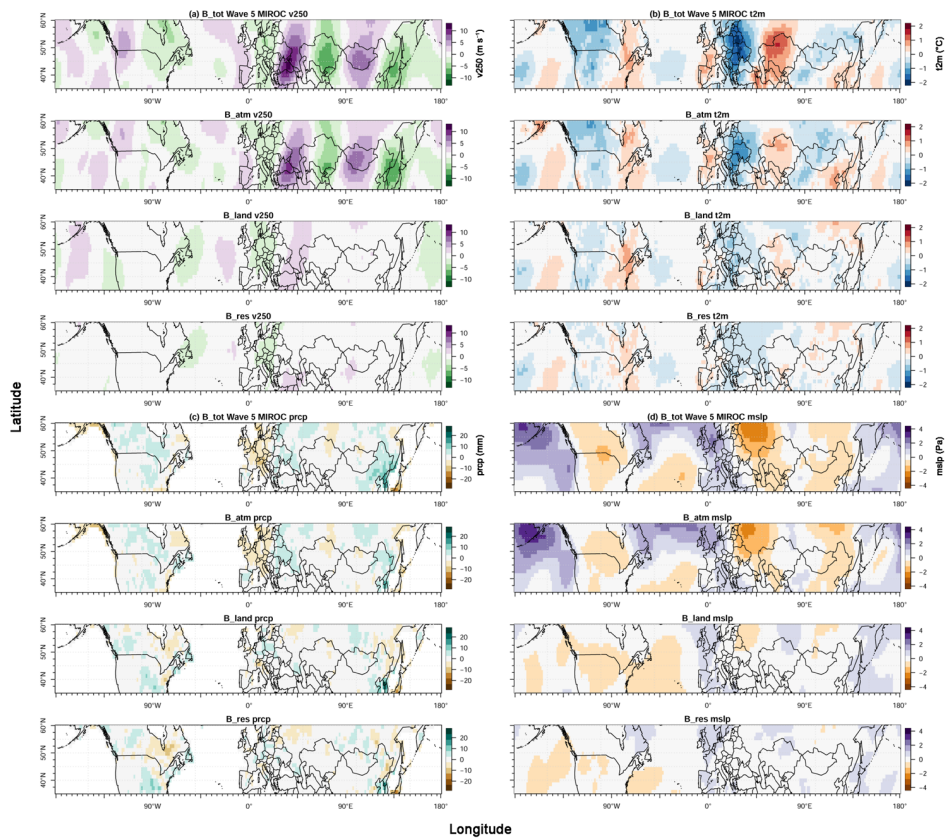
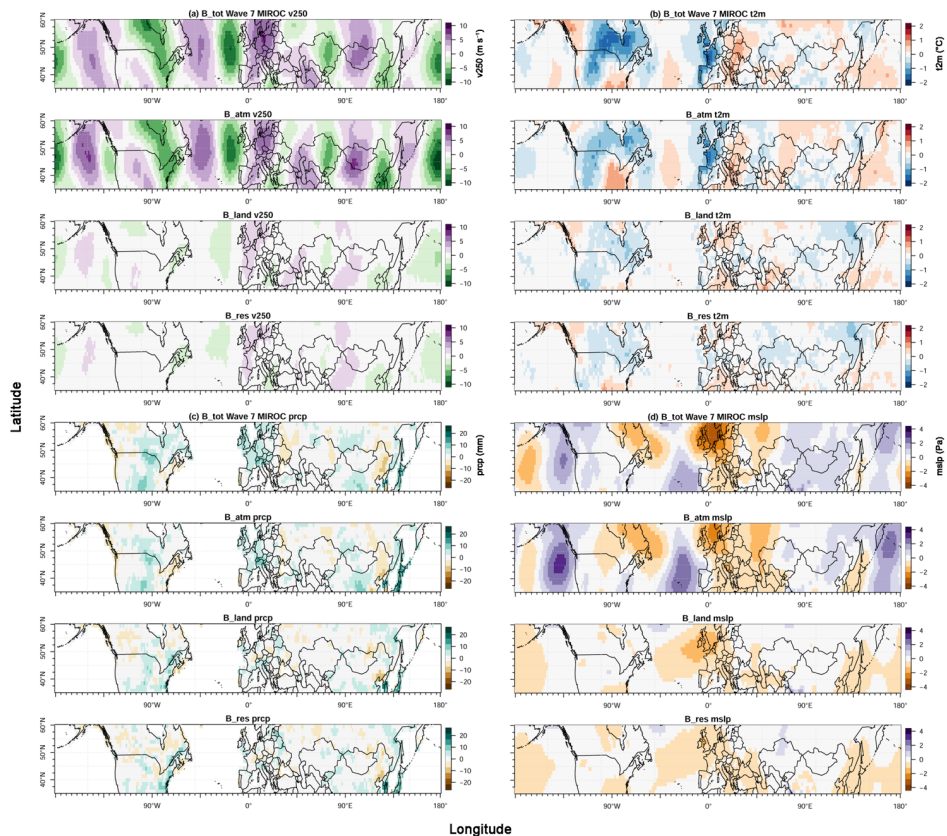


Figure B8: Bias plots for high-amplitude wave-5 events in different experiments for MIROC. Total bias( $B_{tot}$ ), atmospheric bias( $B_{atm}$ ), land-atmosphere interaction bias ( $B_{land}$ ) and residual bias( $B_{res}$ ) for meridional wind velocity at 250hPa (a), surface temperature (b), precipitation (c), and ~~sea level~~ pressure (d).

Deleted: sea level



Deleted: sea level

585

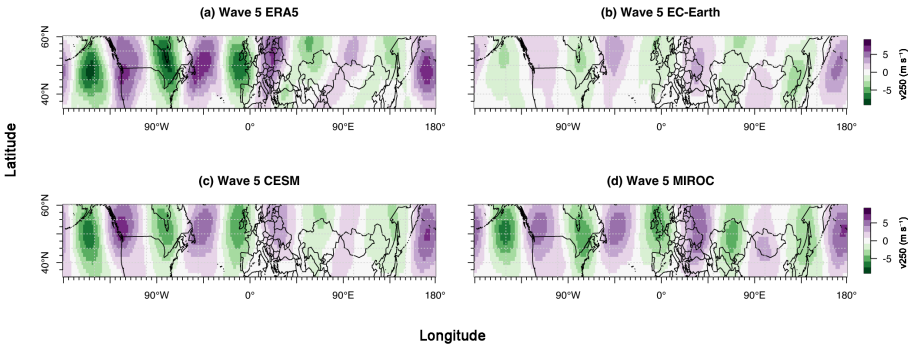


Figure B10: Composite anomaly plots of weeks with high-amplitude wave-5 events for meridional wind velocity at 250hPa ( $v_{250}$ , anomaly) in ERA5 (a), EC-Earth (b), CESM (c) and MIROC (d) based on control runs AISI.

590

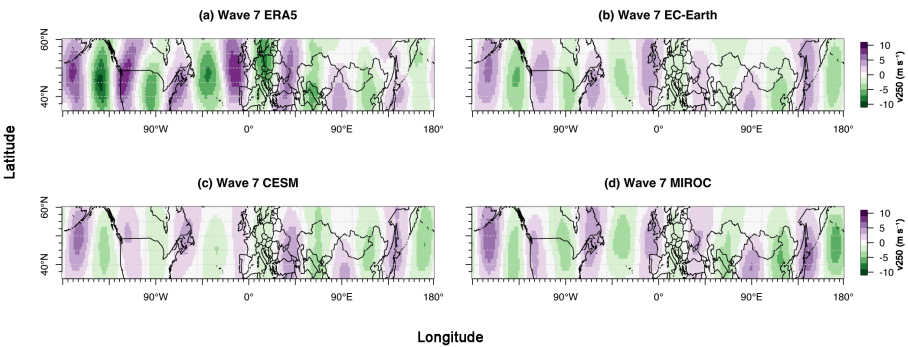
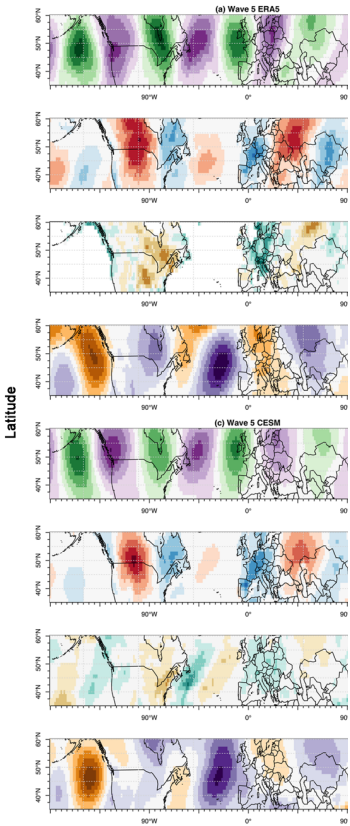
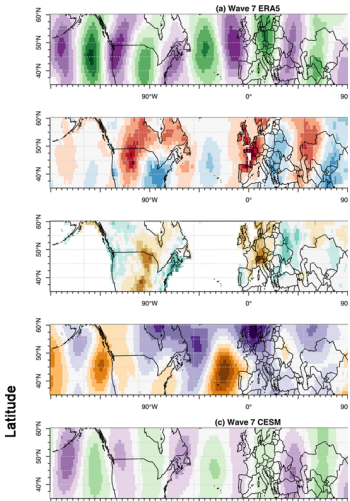


Figure B11: Composite anomaly plots of weeks with high-amplitude wave-7 events for meridional wind velocity at 250hPa ( $v_{250}$ , anomaly) in ERA5 (a), EC-Earth (b), CESM (c) and MIROC (d) based on control runs AISI.

Formatted: Font: (Default) Times New Roman  
Formatted: Normal, Line spacing: single



Deleted: ... [48]  
Formatted: Font: (Default) Times New Roman  
Formatted: Normal, Line spacing: single



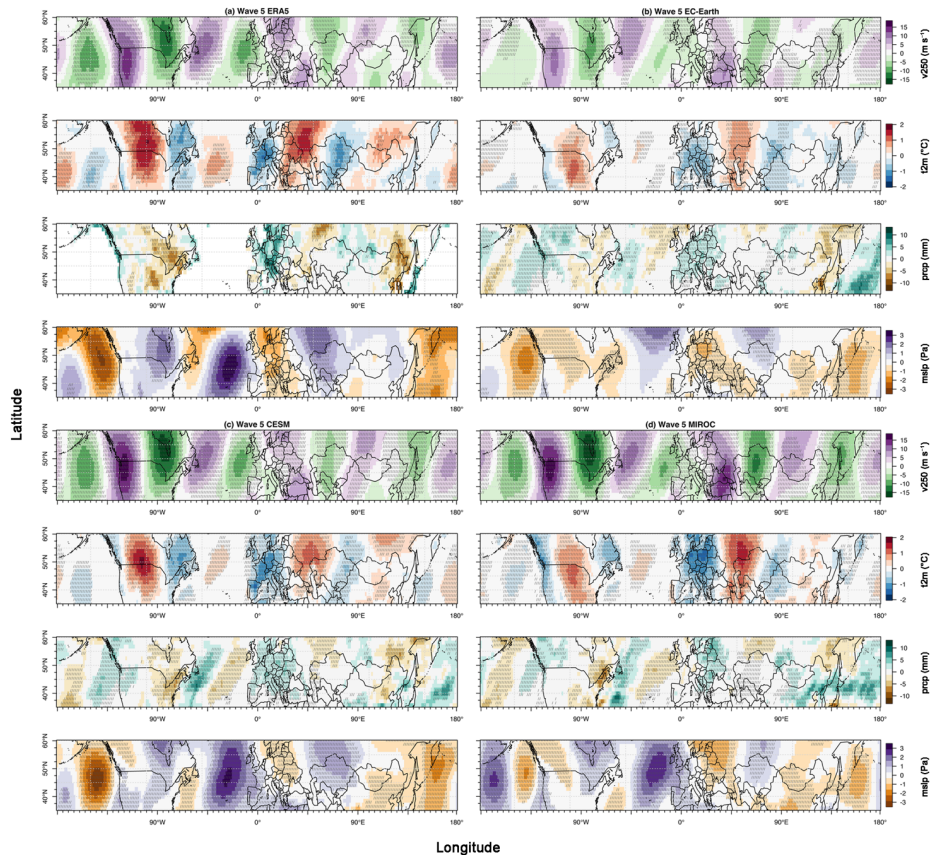


Figure B12: Same as Fig. 3 but with significance test at 95% confidence level applied. Values significantly exceeding the 95% confidence level from composites between amplified and non-amplified periods are hatched.

Deleted:

Deleted: (areas highlighted in shade fuchsia are statistically significant after FDR method accounted for).

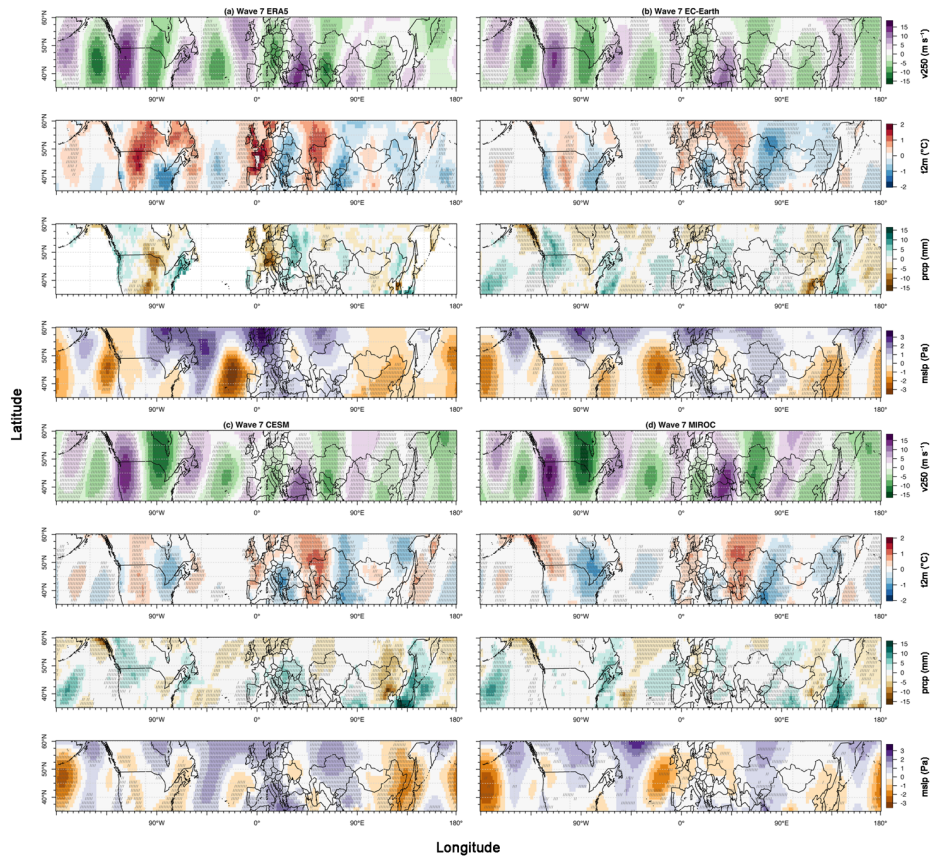
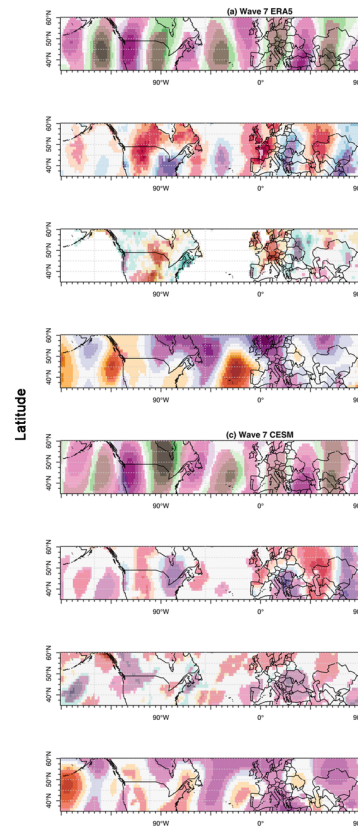


Figure B13: Same as Fig. 4 but with significance test at 95% confidence level applied. Values significantly exceeding the 95% confidence level from composites between amplified and non-amplified periods are hatched.



Deleted:

Deleted: applied

Deleted: (areas highlighted in shade fuchsia are statistically significant after FDR method accounted for).