



A Characterisation of Alpine Mesocyclone Occurrence

Monika Feldmann^{1,2}, Urs Germann², Marco Gabella², and Alexis Berne¹

¹LTE, EPFL; GR C2 565; 1015 Lausanne; Switzerland

²RSN, Meteoswiss; Via ai Monti 146; 6605 Locarno; Switzerland

Correspondence: Monika Feldmann (monika.feldmann@epfl.ch)

Abstract. This work presents a characterization of mesocyclone occurrence and frequency in the Alpine region, as observed from the Swiss operational radar network. Five years of radar data are processed with a thunderstorm detection and tracking algorithm and subsequently with a mesocyclone detection algorithm. A quality assessment of the radar domain provides additional information on the reliability of the tracking algorithms throughout the domain. The resulting data set provides the first insight into the spatio-temporal distribution of mesocyclones in the Swiss domain, with a more detailed focus on the influence of synoptic weather, diurnal cycle and terrain. Both on the northern and southern side of the Alps mesocyclonic signatures in thunderstorms are frequent. The regions with highest occurrence are predominantly the Southern Prealps and to a lesser degree the Northern Prealps. The parallels to hail research over the same region are discussed.

1 Introduction

Severe convection in Europe is an increasing weather hazard, that causes significant damage and loss every year (Munich Re, 2016). Switzerland's Prealpine areas are known to be one of the most active regions in Europe (Munich Re, 2016). With supercells being a part of severe convection, the consequential hazards including lightning, downbursts, straightline winds, hail and tornadoes (Markowski and Richardson, 2010), they pose a risk to infrastructure, property and lives. Identifying mesocyclone structures in convection allows the identification of supercell thunderstorms and a monitoring of their occurrence (Zrnić et al., 1985; Miller et al., 2013).

Supercells and particularly tornadoes have largely been studied in the Great Plains and Southeast of the United States, where the terrain is flat. Many field campaigns have taken place there to obtain in situ and close-range measurements of supercell environments, ranging from early campaigns in the 70s (Bluestein, 1999), the 25-year VORTEX project (NSSL, 2019) and ongoing TORUS campaign (Frew et al., 2020; Garcia de Jesus, 2019). VORTEX-SE began covering the beginning of the Appalachian chain, including more complex orography. The observational climatology established in this region is also one of the longest, with mesocyclone detection algorithms having been introduced in the 90s (Zrnić et al., 1985; Stumpf et al., 1998). However, terrain is no obstacle to the initiation of supercells and recent studies have focused more on studying supercells in diverse geographical contexts. The data stemming from the RELAMPAGO-CACTI (Varble et al., 2021; Nesbitt et al., 2021) field campaign contains the potential to dissect the role of terrain (here the conjunction of the Andes and the Sierra de Cordobas) in the upscale growth of supercells to mesoscale convective complexes (Mulholland et al., 2019, 2020). Most studies focus on single cases or a small number of cases, as the amount of data from a field campaign is limited. The ongoing TEAMx



project (Serafin et al., 2020) specifically targets transport and exchange processes over the mountains, and also contains a section targeting the evolution of convection. These recent campaigns show the relevance of investigating the nature of severe convection in mountainous areas.

30 Only very little research in Switzerland has thus far focused on mesocyclones and supercells specifically. Houze et al. (1993) investigated the behaviour of severe convection in the Northern Prealps, with 7 years of data from a single-polarization radar. Rotation was inferred from radar reflectivity images. This analysis produced 42 rotating storms during the observation period within the 60 km range of the radar. Only little more right-moving storms occurred than left-moving storms, indicating that there is no strict preference in rotation direction. The study also showed a significant overlap with hailstorms observed during
35 this period.

With hail being a prominent risk factor of severe convection in Switzerland, it is the focus of many recent studies. They range from case studies on hail storms (Trefalt et al., 2018) over collecting crowd sourced hail reports (Barras et al., 2019) and investigating hail in radar data (Nisi et al., 2016, 2018, 2020) to building a conclusive hail climatology from multiple data sources (NCCS, 2021). The link between lightning jumps and hail occurrence for the purpose of nowcasting has also been investigated
40 (Figueras i Ventura et al., 2019). Particularly Nisi et al. (2018) describes the general occurrence and frequency of hail events in Switzerland, taking into account the effects of the seasonal and diurnal cycle and investigating the influence of the synoptic weather situation. Key takeaways are the importance of weather situations with south-westerly and westerly flow, as well as the dominance of rather large, persistent hailstorms at low convective activity hours of the night.

While tornadoes are rare in Switzerland, they nonetheless occur approximately once per year, as estimated by the Swiss severe
45 weather database (Sturmarchiv Schweiz, 2021). Most tornadoes are very weak and classify as F0 events, but on rare occasions, a more significant event can take place. Both Peyraud (2013) and Grazioli et al. (2019) show case studies of tornadoes in Western Switzerland. Avolio et al. (2020) describe the case of a supercell, that media reported to have a suspected tornado, just beyond the Southern Swiss border.

In Germany, mesocyclone detection has been implemented more recently (Hengstebeck et al., 2018). Studies there also show
50 that supercells can occur in all parts of the country, including areas with complex topography, such as the Bavarian Prealps (Wapler et al., 2016; Wapler, 2017). The majority of hailstorms have a mesocyclone structure before and during the production of hail, indicating the relevance of detecting mesocyclones for nowcasting purposes. Mirroring the overall behaviour of convection, there is a pronounced seasonal and diurnal cycle, with a large influence of the synoptic weather situation. In comparison with (Nisi et al., 2018), the dominant flow situations initiating severe convection in Germany differ from Switzerland due to
55 the different geographical location. Mohr et al. (2020) show the influence of synoptic weather on a series of severe thunderstorms from Southwestern France to Northeastern Germany in June 2018, highlighting the importance of the large-scale flow on widespread severe weather outbreaks including supercells.

With the potential of severe convection rising not only globally (Diffenbaugh et al., 2013), but also in central Europe (Rädler et al., 2019; Mohr and Kunz, 2013), we have a large incentive to better understand and characterize mesocyclones in the Swiss
60 domain.

Our work focuses on the region covered by the Swiss operational radar network Rad4Alp (Germann et al., 2016; MeteoSchweiz,



2018), which extends over the main Alpine ridge, Prealps, Jura mountains and parts of the neighbouring countries Germany, France, Italy and Austria. The Alps dominate the topography of this area, allowing a study of supercell behaviour in complex terrain and high altitude environments. We here establish a systematic detection of mesocyclones in the entire radar domain
65 over 5 years. This allows a first-time characterization of the spatio-temporal distribution of mesocyclones in the Swiss domain and builds the basis for operational automatic mesocyclone detection and nowcasting. Recent improvements in the processing of radar Doppler velocity (Feldmann et al., 2020) now allow the implementation of a robust, radar-data based mesocyclone detection algorithm.

Our work presented is organized as follows. Section 2 describes the datasets used in our analyses, while Sect. 3 introduces
70 the methods applied. The results are presented and discussed in Sect. 4, followed by our conclusion (Sect. 5). The appendix includes more detailed descriptions of the thunderstorm detection algorithm (A), mesocyclone detection algorithm (B), the radar network quality assessment C) and further example cases (D).

2 Data

In this study we largely rely on the operational radar data of the Swiss Rad4Alp network. To pre-process the Doppler velocity
75 data, the numerical weather prediction model COSMO (Consortium for Small Scale Modelling, 2018) provides velocity data as an initialization. Additional information is drawn from an operational classification of the general weather situation (Weusthoff, 2011) and a digital elevation model of Switzerland (©swisstopo, 2005; Jarvis et al., 2008).

2.1 Operational Radar Network

The operational radar network of Switzerland, Rad4Alp, consists in 5 polarimetric C-band radars, as described in Germann
80 et al. (2016); MeteoSchweiz (2018). They are situated throughout the country at altitudes from 900 m ASL to 3000 m ASL and provide a good coverage of both the plains, as well as the Alpine region. The data is processed at a resolution of 500m x 1°. With the observation range extending up to 246 km, the coverage extends far beyond the country boundaries and allows the observation of convective evolution that is approaching Switzerland. Each radar performs 20 elevation scans between -0.5° and 40° every 5 minutes. The high temporal resolution facilitates observing convective life cycles, particularly in complex
85 environments such as the Alpine terrain. The large range of elevation scans provides a dense vertical layering of observations, allowing an as close to the surface as possible measurement of precipitation over complex terrain and extending up to high altitudes to cover the vertical extent of convection.

Here, we focus on data from the convective seasons, which we define as 1. April - 31. October, from 2016-2020. We use the Cartesian maximum reflectivity product, as well as the dealiased Doppler velocity. Due to relatively low Nyquist velocities
90 in the raw Doppler velocity and complex airflow situations in thunderstorms, we initialize the dealiasing algorithm R2D2 (Feldmann et al., 2020) with a radial wind estimate from COSMO-1 analysis data (Consortium for Small Scale Modelling, 2018). During this 5-year period, all 5 radars provide homogeneous data coverage with the same, synchronised scan strategy and COSMO-1 data is available.



2.2 Supplementary Data

95 To characterize the meteorological and topographical environment of convection, we use a synoptic weather classification and a digital elevation model. The Gross Wetter Types (GWT) weather classification provides 8 different weather types over Switzerland that are based on the synoptic flow at 500 hPa geopotential height (Weusthoff, 2011). The classes directly correspond to the eight cardinal directions.

The digital elevation model (@swisstopo (2005) extended with Jarvis et al. (2008)) provides elevation data over the Swiss radar
100 domain. It is used to provide topographical context for our analyses and investigate the first-order influences of terrain.

3 Methods

To reliably detect mesocyclones in an Alpine context, we combine a thunderstorm detection and tracking algorithm with a mesocyclone detection algorithm. The mesocyclone detection activates within the identified thunderstorms.

3.1 Thunderstorm Detection And Tracking (T-DaTing)

105 The thunderstorm detection is based on a dynamic threshold algorithm, which works very similarly to MeteoSwiss's operational thunderstorm tracking algorithm TRT (Hering et al., 2004). Cells are identified based on thresholds in the Cartesian maximum reflectivity field. Adjoining cells' boundaries are identified by using a watershed algorithm. From one timestep to the next, the motion of the cells is estimated by the pySTEPS optical flow (Pulkkinen et al., 2019) approach. Newly identified cells in the next time step with a large overlap to previously advected cells are then matched. A more detailed description of the T-DaTing
110 algorithm can be found in Appendix A.

3.2 Mesocyclone Detection

Within the contours of the identified thunderstorms cells, the mesocyclone detection becomes active. Identifying mesocyclonic rotation in radar data relies on estimating vertical rotation (around a vertical axis) from Doppler velocity data (Stumpf et al., 1998). As Doppler velocity only measures the radial component of the full velocity vector, it denotes the incoming or outgoing
115 velocity of particles with respect to the radar. The azimuthal derivative is an approximation of vertical rotation (Miller et al., 2013) and corresponds to roughly half of the vertical vorticity component (see Sect. B, equation B2). Areas of consistently high azimuthal derivative indicate rotation phenomena. At each radar elevation we employ object detection techniques to identify these areas and compute additional rotational metrics such as rotational velocity and vorticity per object (see Sect. B, equations B2 and B1). All identified objects that meet the detection criteria are grouped within each cell and evaluated for vertical and
120 temporal continuity (Hengstebeck et al., 2018). The definition of a mesocyclone applied here requires a minimum vorticity of 10^{-2} s^{-1} (Hengstebeck et al., 2018), a minimum rotational velocity of 10 m s^{-1} (Stumpf et al., 1998) and a signature depth of 3000 m (Stumpf et al., 1998). All of these criteria linearly decrease towards far ranges to compensate for decreasing spatial resolution, allowing for detections at more than 100 km distance. Signatures must persist over at least three detections, each at



maximum two time steps apart. A detailed description of the algorithm is provided in Appendix B.

125

3.3 Data Quality Assessment

Considering the complexity of radar observations in mountainous terrain, this section introduces a method of estimating observational uncertainties within a radar network. We combine different aspects of the radar network to obtain a qualitative index that represents the relative quality of observations at a given location.

130 The considered properties are theoretical visibility, minimum and maximum altitude of measurements, spatial resolution and numerical noise stemming from data quantization. These metrics are assessed for each radar and merged onto a Cartesian grid, where the highest quality metric is retained. The metrics are then rescaled between 0 and 1 and combined into a general quality index. A detailed description of the computation of the quality index is in Appendix C.

This results in a spatial map of the quality index of the radar network. It is a qualitative index and only represents a relative
135 comparison of detection probability, not a quantitative measure of correcting for detection gaps.

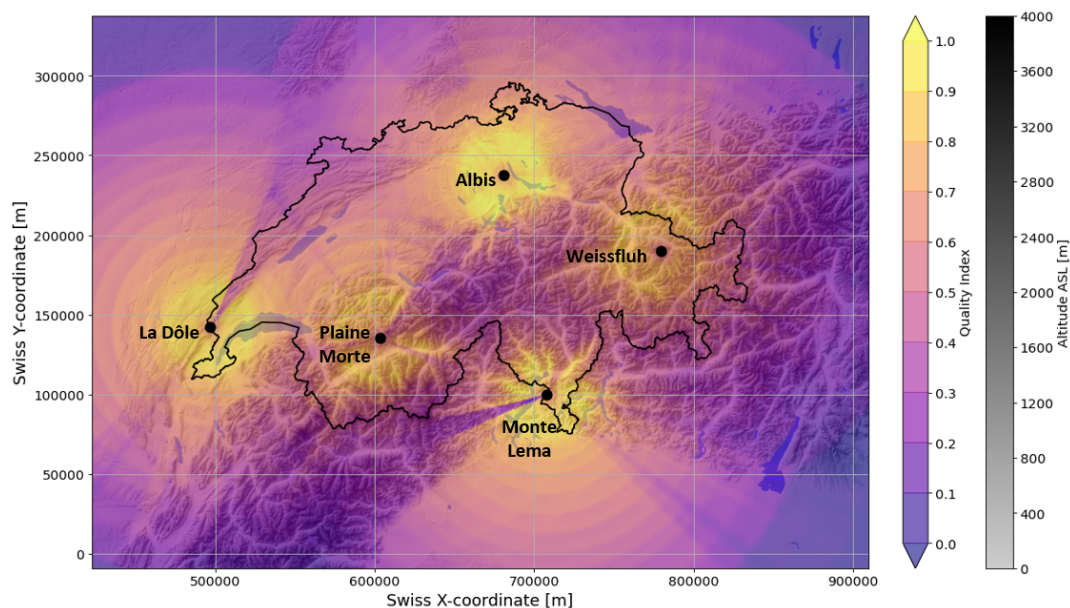


Figure 1. Relative quality index for mesocyclones detection in the Swiss weather radar network

Figure 1 depicts the results of the quality index assessment over the Swiss domain. The black dots indicate the locations of the 5 radars, the Swiss border is also indicated in black. With the topography underlain in the background, we can see the clear influence orography has on the quality index. This is primarily a consequence of radar beam blockage, which decreases visibility, particularly at low levels. Two noticeable artefacts are a dip in quality over the Jura, caused by beam blockage in the
140



vicinity of La Dôle radar; and a similar gap in observations to the West of Lema radar. These artifacts stem from constructions in the vicinity of the radars blocking the visibility. The obstruction of Lema is more recent and does not affect the entire analysis period. The decrease in quality in the main Alpine ridge is caused by beam blockage of terrain.

4 Results

145 As an introduction to mesocyclonic rotation in an Alpine context, we first show an example case from Ticino, which is in the Southern Prealps and very prone to thunder- and hailstorms (Nisi et al., 2018). Figure 2 shows both the radar reflectivity and Doppler velocity measured from Monte Lema radar at 17:30 UTC on August 20th, 2019; and the location of this case marked as A in the map. In the reflectivity data we can clearly see the location of the convective cell at 10-15 km range and 90-150° azimuth with values exceeding 45 dBZ, indicating strong convection. The shape of the area of high reflectivity shows the typical hook-echo, which suggests the presence of prominent rotation. In the Doppler velocity data, we can see the opposition of inbound (red) and outbound (blue) velocities close to the hook, here presenting anticyclonic rotation (indicated with arrows), confirming the presence of a mesocyclone. While these signatures are quite clear, the rotational velocity is not particularly high in comparison to supercells in other regions, here averaging around 12 m s^{-1} . To represent the spatial heterogeneity in Switzerland, two additional case studies from the high Alpine region (B) and the Rhine valley (C) are provided in Appendix D. Their locations B and C are also marked on the map.

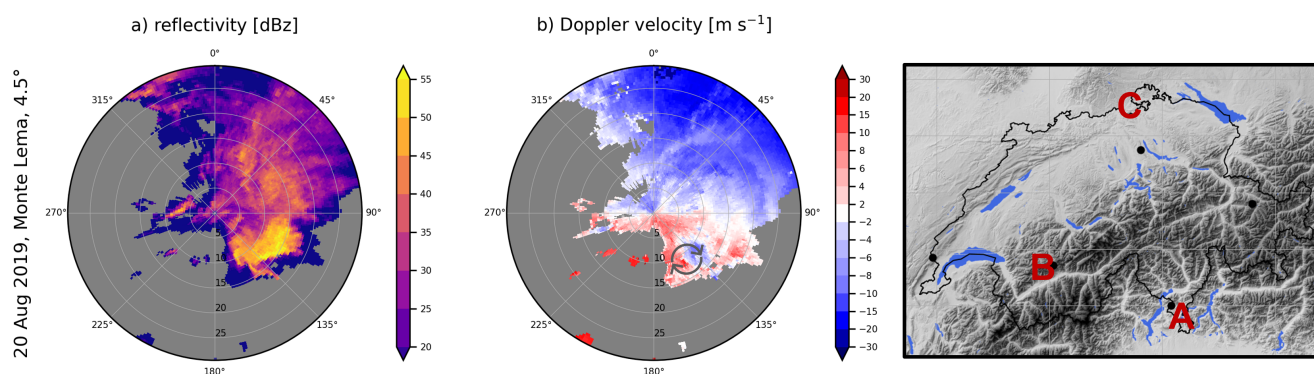


Figure 2. Example of supercell in the Southern Prealps; August 20th, 2019 at 17.30 UTC

From here we will inspect the overall distribution and occurrence of mesocyclonic rotation over the Swiss domain during the 5 analyzed years and compare this to the general occurrence of thunderstorms and the quality of the radar network. Table 1 gives an overview of the annual average convective activity.

160 Approximately 10 % of days during the convective season had at least one mesocyclone within the Swiss domain. T-DaTing is configured to detect storms exceeding 50 km^2 to focus on more significant convective systems. 0.3 % of detected thunder-



	number of detections	number of storm tracks	number of active days
mesocyclones	690	80	22
thunderstorms	203'700	25'200	170

Table 1. Overall annual average occurrence of mesocyclones and thunderstorms during 2016-2020 in the Swiss weather radar network

storms showed mesocyclonic rotation. Overall the earliest detected mesocyclone was in the last week of April and the latest in the beginning of the last week of October.

165 Figure 3 a) shows the spatial distribution and density of the 5-year thunderstorm and mesocyclone analysis. Thunderstorms are clustered in the Prealpine valleys in moderately high topography. In absolute terms the main hot spot is to the South of the Alps in Ticino. The Alps serve as a meteorological divide, separating Northern Switzerland from Mediterranean air masses. Ticino experiences more subtropical, Mediterranean conditions than the rest of Switzerland, with generally higher temperatures and frequently high relative humidity. These conditions are more conducive to convective initiation and development. Topography can induce convection through valley wind systems. Particularly in the afternoon hours, upslope winds cause convergence
170 over ridges and can provide the initial lift needed to overcome convective inhibition. We can also see that the frequency of thunderstorm detections is higher in the vicinity of the radars. If we compare the spatial distribution of thunderstorms to the relative quality map of the Swiss domain, we can clearly see that the likelihood of detecting thunderstorms is larger, when the relative quality index is high. Nonetheless, the dominant spatial trends of convective preference in the Prealps are meteorologically consistent with orographic convection. The clearest deviation from meteorological expectations can be seen to the
175 Northeast and Southwest of the Jura. Beam blockage and sensitivity issues significantly lower the capability of La Dôle radar to accurately observe convective events in these areas.

Shifting our focus to the spatial distribution of thunderstorm tracks that contain a mesocyclone in Fig. 3 b), we can see a similar spatial pattern. Most mesocyclonic storms occur to the South of the Alps. In the North, they largely occur in Prealpine areas.
180 A small, but relevant hot spot can be seen in the Napf area to the West of Lake Lucerne. Additionally the Bernese Alps and Zurich Oberland are areas of elevated frequency. Both the global maximum in Ticino and the local maxima in the Northern Prealps correspond to hail occurrence maxima (NCCS, 2021; Nisi et al., 2018; Trefalt et al., 2018). Considering that hail is a known severe weather consequence of mesocyclones, this overlap reinforces the robustness of the obtained spatial distribution. We can see a lesser dependence of detections on the quality index. This may be due to the fact, that mesocyclones generally
185 have a large vertical extent and can be detected in multiple consecutive elevation scans, thus being less dependent on accurate measurements in single elevation scans. By using range-dependent rotation thresholds, the detectable range of mesocyclones exceeds 100 km per radar. The most issues can still be noted over the Jura, where the beam blockage of La Dôle radar impacts the first 10 elevation scans. The beam blockage in this area is severe enough, that confirmed cases of mesocyclones are missed in this region. This is illustrated by the case study of a tornado near Neuchâtel in Grazioli et al. (2019), in which the data from
190 both a mobile, X-band radar that was tracking this storm cell, and the operational C-band data, are analyzed. The rotation is

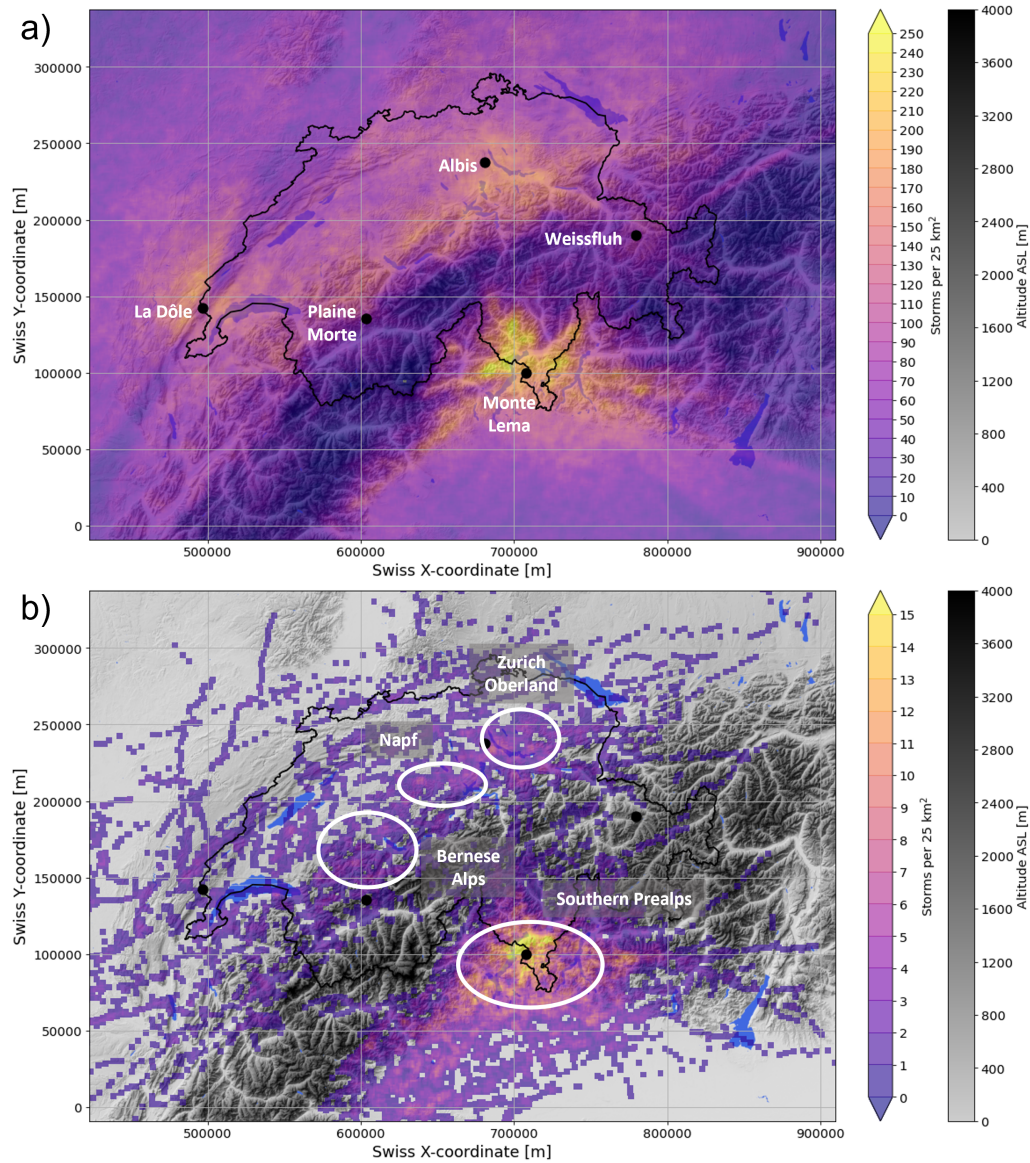


Figure 3. a) Thunderstorm and b) mesocyclone detections from 2016-2020



clearly visible in the X-band data, however from La Dôle radar, the rotation is undetectable and the location is at a far range from Albis radar.

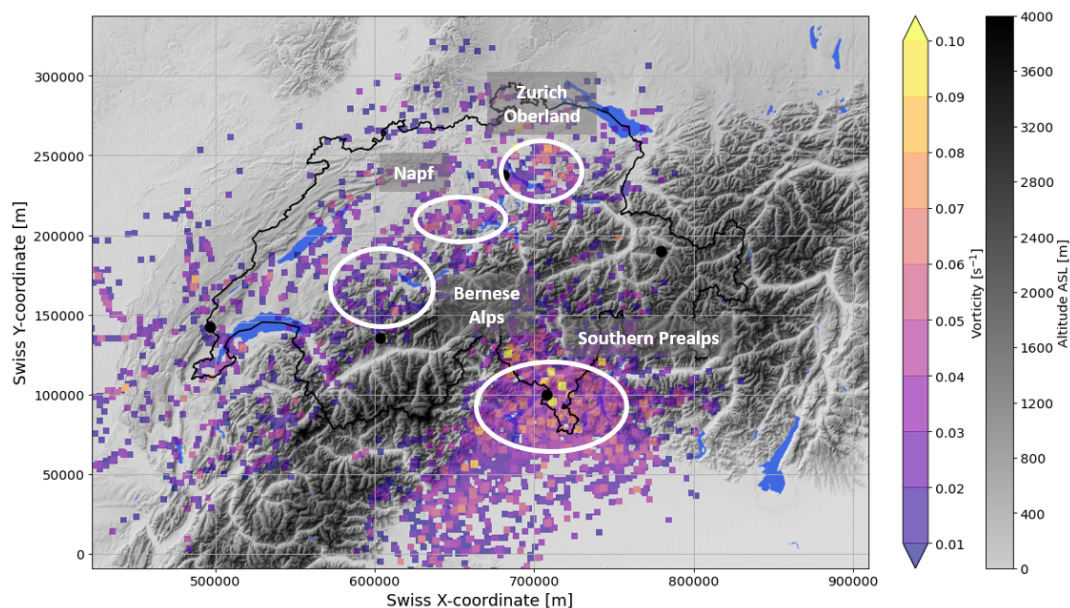


Figure 4. Maximum detected vorticity during five years (2016-2020)

Figure 4 shows the maximum measured vorticity values of all detected mesocyclones. The largest cluster of high vorticity values is located around the Ticino hot spot. But also the Napf area and Zurich Oberland show consistently elevated values of vorticity. This is not the case for the Bernese Alps, where the vorticity values are on the low end of the spectrum and close to the detection threshold. The topography is significantly more complex here, which may impact a storms capability to maintain strong rotation.

The overlap of the strongest rotation concurring with the largest hail in the Napf region and Southern Ticino (NCCS, 2021) indicates that stronger rotation may favour larger hail. However the differences in the Bernese Alps, where we have large hail, but low rotation velocities and Zurich Oberland, where we have high rotation velocities, but smaller hail show that there may also be other factors at play and warrants further investigation. Discrepancies may also be owed to the relatively short duration of the 5 year analysis.

4.1 Synoptic Weather Situation

The synoptic weather classification GWT provides insight in which synoptical flow situations mesocyclones are likely to occur. Figure 5 shows the location of all detected mesocyclones, color coded by the corresponding flow direction.

Flow from the Southwest is responsible for the majority (55 %) of mesocyclone detections. These situations are often charac-



210 terized by airmasses originating in the warm, humid Mediterranean area. They hold high amounts of CAPE and moisture, thus presenting favorable conditions for severe convection. In the analyzed time period, approximately 25 % of days with a Southwesterly flow produced at least one mesocyclone. A particularly potent synoptic constellation is called the "Spanish plume" (Peyraud, 2013), where the lowlevel Southwesterly flow is in the prefrontal zone of an approaching cold front over France, the midlevel flow supplies warm, dry air stemming from the Iberian peninsula and the upper-level flow is Westerly, with cooler, Atlantic air. This leads to high amounts of CAPE in addition to lifting occurring through the approaching front. The vertical change in flow direction provides directional wind shear, which is beneficial for mesocyclone development. Depending on the altitude of the transition to the Westerly upper-level flow, a fraction of Spanish plume events may also be classified as Westerly flow in the GWT classification. Westerly flow is the second most frequent flow direction during mesocyclones, contributing to a third of all detections, followed by Southerly flow at $\sim 10\%$. Both have similar characteristics as Southwesterly flow, but less reliably yield the optimal conditions for severe convection. Westerly flow is the most common flow situation in Switzerland and rather brings Atlantic airmasses to Northern Switzerland, however South of the Alps this flow can still advect Mediterranean airmasses. Roughly 10 % of days with Westerly flow produce at least one mesocyclone. Southerly flow is more prevalent to the South of the Alps, but already leads to much less mesocyclone cases. To the North, there are only few cases that are displaced further North, as descending air crossing the Alps does not provide favorable conditions. Other flow directions play a very small role and are only responsible for very few cases.

225 It also appears that the synoptic flow steers the main direction of storm tracks, allowing for the deviation of left- and right-mover storms. Histograms of storm direction per weather class cluster in a Gaussian distribution around the direction of synoptic flow (figures not shown). However the mesoscale flow at the steering level may deviate from the synoptic flow.

The response of mesocyclones to the synoptic flow situation is similar to hailstorms (Nisi et al., 2018). The discrepancies lie in hailstorms occurring more frequently in Westerly than Southwesterly flow and rarely in Southerly flow. Westerly flow leads to a hail hotspot in the Northern Jura, where the quality of Doppler velocity data is limited and we potentially miss mesocyclones. 230 Moreover, while hailstorms and mesocyclones show considerable overlap, neither necessitates the other.

4.2 Diurnal Cycle

235 The occurrence of mesocyclones shows a pronounced diurnal cycle that mirrors the cycle of convection in general (see Fig. 6 a)). The majority of storms occur in the afternoon and first half of the night, with the peak of formation at 15 UTC. Mesocyclones, however, show a local, smaller peak, during the second half of the night as well (0-4 UTC) and then a minimum in the early morning at 4 UTC. Thunderstorms in general drop to a lower occurrence from 0-10 UTC, but can initiate at all hours of the day. The base frequency at unfavourable hours in the late night and early morning is almost constant.

240 In comparison to this frequency distribution, there is also a diurnal cycle reflected in storm area and track length, as shown in Fig. 6 b). In contrast to the occurrence histogram, the global peak of all three variables is at 12 UTC, before the peak mesocyclone occurrence time in the day. A local peak is additionally found at 4 UTC during the minimum of mesocyclone occurrence.

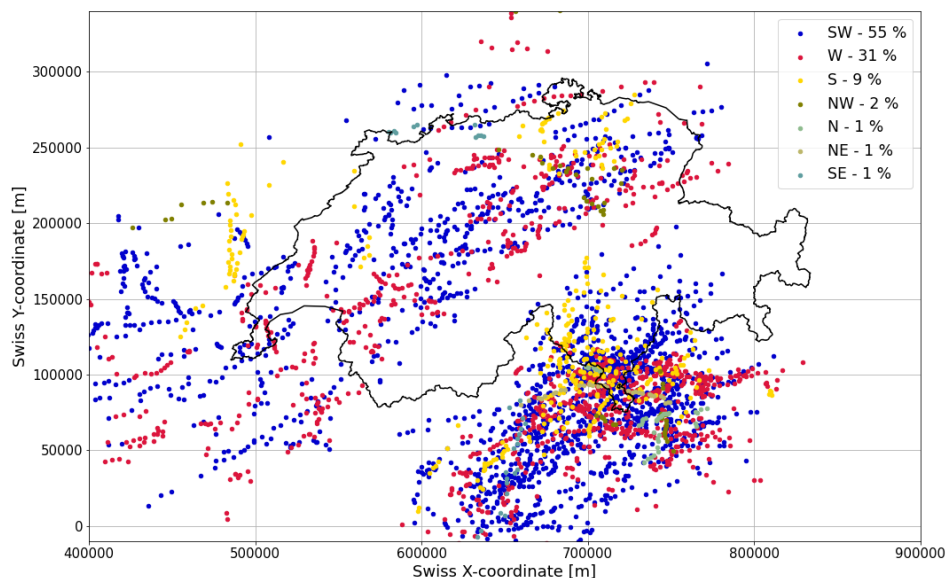


Figure 5. Spatial influence of synoptic weather situation

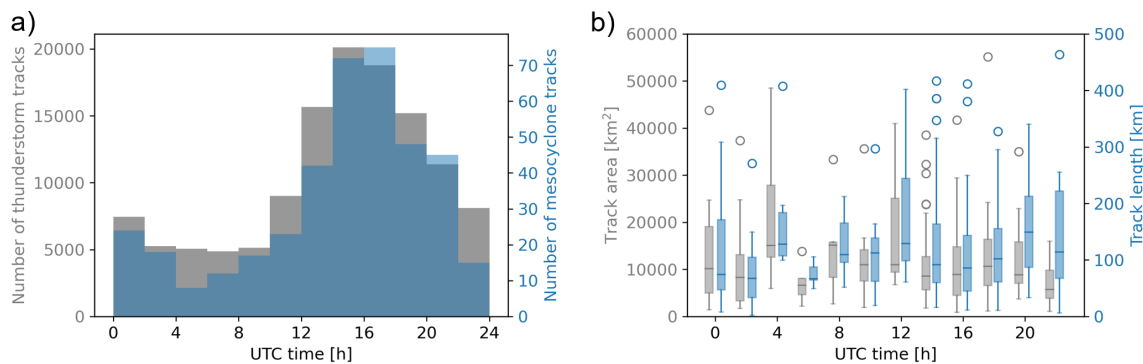


Figure 6. Diurnal cycle of convection (a), and mesocyclone track properties (b).



This shows parallels to research conducted on hailstorms, where the longest and largest storms also occur outside hours of the convective peak. Due to the significant drop in frequency at this time of day, this indicates a significant overlap between these storms. It also reinforces the notion that convective storms that initiate during unfavourable hours of the day are more likely to be severe, whereas the most active hours of the day contain a large fraction of less intense storms (Nisi et al., 2018).

4.3 Terrain

Utilizing the data from the digital elevation model, we can see that the majority of rotating storms move uphill during their lifetime. With the majority of storms occurring in Ticino and a Southwesterly flow direction dominating here, many storms follow a Northeasterly path towards the main Alpine ridge, thus moving uphill. Up to an altitude of approximately 1500 m, the storms do not show intensity correlation to the altitude. Beyond that, higher altitude negatively impacts intensity metrics such as rotational velocity, vorticity, vertical extent and maximum reflectivity. Figure 7 shows this relationship for rotational velocity and vorticity. The majority of storms are detected in relatively flat areas within the Prealpine region, such as the larger valleys and lakes, as we can see in Fig. 3. At high altitudes beyond 1500 m the terrain becomes increasingly complex with steep slopes and rapid altitude changes. We hypothesize that this could impact the low-level dynamics of a supercell, disturbing the generation of vorticity at the outflow boundary and its advection back into the storm in the inflow.

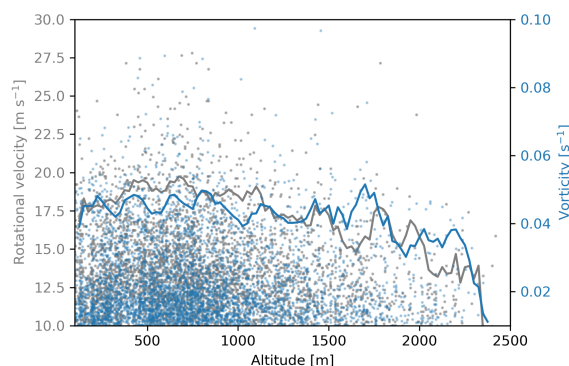


Figure 7. Topographical influence on rotational metrics; scatterplot of rotational velocity and vorticity versus altitude. The grey and blue lines indicate the smoothed 95th percentile

With the majority of storms located in the Prealpine regions, orographic triggers for convective initiation play an important role in Switzerland. The main Alpine ridge poses a strong separation for thunderstorms. The thunderstorm track may occasionally persist across the main Alpine ridge, but no rotation signature is consistently trackable across. This further reinforces the notion that high altitude mountainous terrain has an inhibiting impact on the rotation dynamics of a thunderstorm.



5 Conclusions

Overall, the implementation of a mesocyclone detection algorithm and the analysis of the years 2016-2020 allows a first time assessment of the occurrence of mesocyclones in Switzerland. Around 80 thunderstorms per year had a mesocyclone, distributed over 22 days per year. It is evident that mesocyclones can be detected and tracked in a large portion of the Swiss radar domain. The maximum detectable range for mesocyclones in the Swiss radar network exceeds 100 km per radar. The accompanying relative quality index map helps interpret, where the mesocyclone detection is impeded by the physical limitations of the radar network. The most pronounced limitations are over the Jura in Northwestern Switzerland and over the inner, main Alpine ridge, as well as at far ranges outside of Switzerland.

The 5 year analysis allows a first assessment of the overall frequency and spatial distribution of mesocyclones in the Swiss domain. The absolute maximum of detections lies in the Southern Prealps. Monte Lema radar, situated in this regions, detects approximately 50 % of all mesocyclones, with the other half being distributed rather evenly between the other 4 radars. Smaller, local maxima lie in the Prealpine valleys to the North of the Alps, such as in the Bernese Alps, the Napf region and the Zurich Oberland. This spatial distribution parallels that of hailstorms (NCCS, 2021).

Clear characteristics emerge and show parallels to other features of convection in Switzerland, such as the importance of the synoptic flow and the pronounced diurnal cycle. Southwesterly flow is the most conducive for mesocyclone occurrence, followed by Westerly and Southerly flow. The diurnal cycle of mesocyclone initiation shows a clear peak in the late afternoon hours and a minimum in the early morning hours, mirroring the diurnal cycle of thunderstorms in general. Size metrics such as area and track length however indicate that the few storms occurring during the minimum tend to be larger and last longer.

This tendency can also be observed in hailstorms (Nisi et al., 2018), indicating a probable overlap between the two storm populations.

With mesocyclones being rather rare events, longer timelines are necessary to establish robust assessments of interannual variability and seasonal trends. The spatial distribution can also be evaluated more robustly with a longer analysis period, as low-activity regions are currently dominated by the characteristics of single events. An extension to past data was not made in this study, as multiple sources of heterogeneity would need to be introduced.

A first investigation of terrain interactions shows that terrain has a clear influence on the initiation of convection. Similarly, the inner Alpine regions are devoid of mesocyclones, indicating that steep, high altitude environments have a negative influence on rotational dynamics. Rotational metrics show a negative correlation with increasingly high altitudes as well.

After establishing this first time assessment of mesocyclones in Switzerland, future work is required to clarify the severe weather consequences of mesocyclones in Switzerland and further investigate the interactions with the complex terrain.

Code and data availability. The T-DaTing algorithm is available in the pySTEPS package (PySteps developers, 2021). The dataset of mesocyclones has been published in Feldmann et al. (2021).



Appendix A: Thunderstorm DaTing

The thunderstorm detection and tracking (T-DaTing) algorithm utilizes image processing, computer vision and optical flow techniques to identify thunderstorms and track them in time. The Cartesian maximum reflectivity field of the Swiss operational radar network is used as input. Its spatial resolution is $1 \times 1 \text{ km}^2$ and it is generated every 5 minutes. All thresholds are tuned to this input data, but are adaptable to other datasets. This algorithm has been published as a part of the pySTEPS package (PySteps developers, 2021).

A1 Thunderstorm Detection

The detection of thunderstorms follows a dynamic, multi-threshold approach. The procedure is modelled after MeteoSwiss's operationally running TRT algorithm (Hering et al., 2004).

In a first step, all areas below the minimum reflectivity Z_{min} are discarded. All remaining areas need to have a peak reflectivity value exceeding Z_p and be larger than the area A_{min} . We chose a relatively large size limit here, as we are interested in supercellular convection, which generally takes place on larger spatial scales. To avoid arbitrary cell boundaries in areas of very high reflectivity values, the data is saturated at the maximum reflectivity Z_{max} . Within these areas exceeding Z_{min} , a local maximum detection algorithm is employed. Maxima within a consecutive area are counted as separate, if the path of least change between them decreases by at least ΔZ . Maxima within 10 km of each other are merged to avoid excessive cell splitting. The remaining maxima are used as anchors for the cells. To separate cells that lie within the same connected area, an inverted watershed algorithm assigns the corresponding areas to each maximum. Thus the boundaries of the inverted watershed algorithm lie along the lowest values of reflectivity in between maxima that are within the same consecutive area, but have a reflectivity drop of at least ΔZ in between them.

This produces the labelled areas for the identified thunderstorm cells. The detection part of the algorithm can be performed on any length of data and does not require temporal continuity. It yields results very similar to Hering et al. (2004), the main deviations are a larger minimum size and the introduction of the minimum distance between maxima. Additionally contours are slightly larger, as they always extent to the boundary of Z_{min} .

variable	unit	threshold
min. reflectivity (Z_{min})	dBZ	35
max. reflectivity (Z_{max})	dBZ	51
min. difference in reflectivity (ΔZ)	dBZ	6
peak reflectivity (Z_p)	dBZ	$Z_{min} + \Delta Z = 41$
min. area (A_{min})	km^2	50

Table A1. Thunderstorm detection thresholds



A2 Thunderstorm Tracking

After detecting the thunderstorm cells, the tracking part of the algorithm estimates the future path of each cell, propagates it and matches it to the detected cells in the next time step.

The movement of the cells is estimated from three consecutive frames of the input data. The Lucas Kanade optical flow algorithm (Lucas and Takeo, 1981) applied to the current and previous two time steps of the maximum reflectivity field yields the projected movement for the next time step (Pulkkinen et al., 2019). Each cell of the previous time step is propagated according to the results from the optical flow. This is then compared to the identified cells of the current time step. If the overlap between two cells is more than 50 %, they are considered as the same cell and assigned the same ID as before. If there is no overlap to a new cell, the cell track ends and this ID is no longer used. If there is no previous cell matching a new cell, a new ID is generated and thus a new track initiated. If a cell splits, the smaller fraction is considered a new cell and obtains a new ID. In case of merging, the smaller cell is considered decayed, where the track of the larger one continues in the merged cell.

For each step, the x and y coordinates, maximum reflectivity, centroids, area and distance from last detection are recorded. In a final step the detections from each time step are resorted into the tracks assigned to their IDs. Tracks shorter than three detections are rejected.

The tracking procedure follows the same steps as Hering et al. (2004). However where previously the propagation was estimated by the past track of the cell, we use the extrapolation from the optical flow here.

Appendix B: Mesocyclone Detection

T-DaTing provides the constraints for the mesocyclone detection algorithm. The detected thunderstorm areas are used as a mask to filter out data unrelated to convection. Additionally, all rotation detected within a cell is assigned to this cell.

B1 Data Preparation

To filter the relevant data, the detected thunderstorm areas are dilated with a $5 \times 5 \text{ km}^2$ kernel. Since mesocyclones can be located outside of the area of largest reflectivity, we consider areas slightly larger than each detected cell. One by one, the algorithm then iterates through the detected cells.

To compute rotation, the dealiased velocity data from all 5 radars and 20 elevations is used. The dealiasing procedure is performed with the novel algorithm R2D2 and COSMO-1 analysis data is used as a first guess. As the velocity data is in polar coordinates, the filter obtained from the Cartesian reflectivity filter is regridded to the polar grid of each radar. Additionally the first 5 km in range from each radar are excluded from processing, due to excessive noise in the data.

For each elevation the azimuthal velocity shear is computed using a centered-difference method. In case of residual velocity folds or dealiasing errors, a quality check is in place. If an area of more than three adjacent pixels exceeds the Nyquist velocity of the corresponding elevation, the Nyquist interval is added or subtracted to reduce the absolute value of the shear in this



area. With Nyquist velocities being quite low, particularly in the lower elevations, the azimuthal shear can physically exceed the Nyquist interval. However, usually this will occur in isolated high-shear gates and not in larger areas. Velocity folds and dealiasing errors however produce contiguous lines of erroneous azimuthal shear and can thus be corrected for in this method.

350 The mesocyclone detection presented here is thus less sensitive to dealiasing errors, as long as the edges of folds can be distinguished from physical shear and the estimation of rotational velocity does not cross a fold.

B2 Rotation Detection

Within each elevation, the convective cells are evaluated iteratively. From the azimuthal shear $\frac{dv}{d\Theta}$, first pattern vectors are constructed. Consecutive areas of shear exceeding a threshold $\frac{dv}{d\Theta}$ are conserved, if they exceed 1 km in length and contain

355 at least three gates. All other data is discarded. These pattern vectors are merged over the ranges using 8-bit connectivity. If pattern vectors neighbor each other over a corner, or directly, they are considered one area. These resulting areas are then further evaluated. They each need to exceed a minimum rotational velocity and vorticity threshold Δv (Eq. B1) and ζ (Eq. B2, see Table B1). Additionally, their aspect ratio needs to be less than 1:3, approximating circular objects.

360
$$\Delta v = \frac{v_{max,inbound} - v_{max,outbound}}{2} \quad (B1)$$

$$\zeta = 2 \cdot \frac{v_{max,inbound} - v_{max,outbound}}{\Delta x} \quad (B2)$$

, where Δx is the Cartesian distance between the velocity maxima.

All rotation areas identified in this way are collected. For each area the location of the centroids, size, rotational metrics,

365 elevation and thunderstorm ID are recorded. Within one cell, more than one detection is possible per elevation, as rotational signatures can be fragmented. Positive and negative azimuthal shear are evaluated separately, to differentiate cyclonic and anticyclonic rotation signatures.

B3 Vertical Continuity

After processing all elevations of one radar, the detected rotation objects are merged. All objects of one thunderstorm ID are

370 considered to belong together and are stacked vertically, as the storm structure can be slanted and detections can be discontinuous due to residual aliasing in the velocity data. Additionally, the vertical depth of the lowest and highest detection must exceed a certain depth h .

Fig. B1 shows a schematic overview of the detection process until this point. Figure B1 a) shows the process within a radar elevation. First the data is filtered with the contours identified in T-DaTing, here approximated with the dark grey cloud (1.).

375 Then the velocity data (2.) is evaluated. Here green denotes outbound velocity and red inbound. From the velocity, the azimuthal derivative is derived (3.), which results in anomalies in the derivative around the velocity couplet. Cyclonic anomalies



are shown in light red here and anticyclonic anomalies in light green. Within these anomalies the rotational velocity and vorticity are computed and measured against thresholds, here resulting in one final rotation object shown in blue (4.). In Fig. B1 b) the aggregation of rotation objects within a thunderstorm contour is shown. Detections (blue ovals) from each elevation (dashed slices) within the contour contribute to the overall vertical structure. To these identified objects the vertical continuity constraints on h are applied. After exceeding all criteria, the objects are summarized as one rotation column (light blue column) for the corresponding convective cell. Also here, anticyclonic and cyclonic signatures are considered separately and must each fulfill all criteria to be recorded and are stored as separate columns.

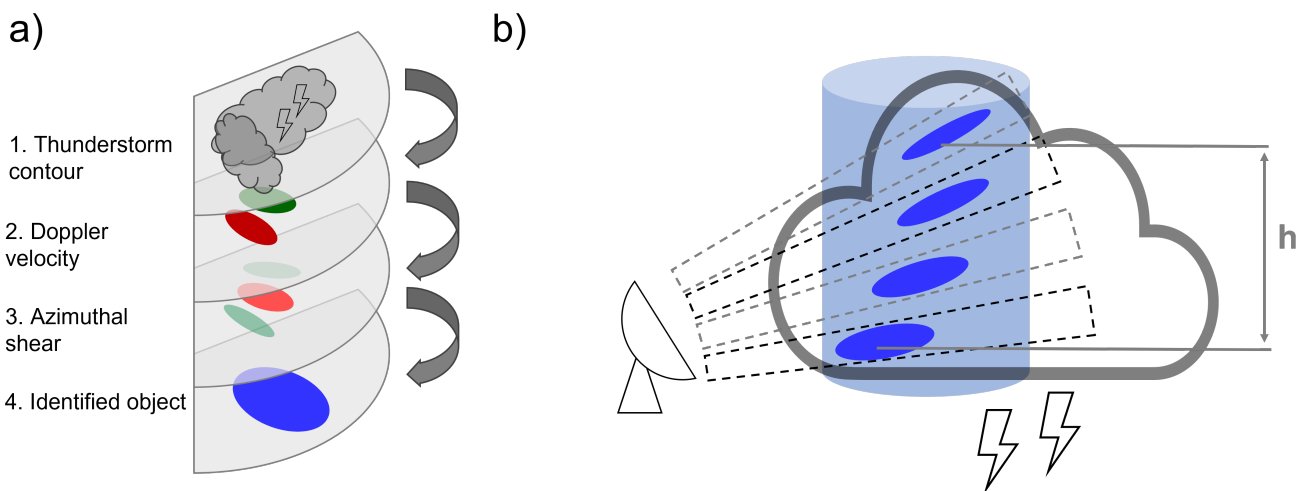


Figure B1. Schematic of mesocyclone detection; a) detection of rotation within radar elevations; b) vertical merging of detections within thunderstorm contour

385 B4 Range Dependent Thresholds

All detection criteria are range dependent thresholds T . The thresholds are most strict at a range of 20 km at T_m and decrease outwards until 100 km to T_o , from where they remain stationary. Within 20 km they decrease towards the radar to T_i . The decrease of the thresholds with range compensates for the reduction in resolution in the data. Within 20 km, the decreased thresholds aim to allow for detections in the noisy shear data at small azimuthal distances. The following table depicts the values chosen in the algorithm here.



variable	unit	inner threshold (T_i)	maximum threshold (T_m)	outer threshold (T_o)
azimuthal shear ($\frac{dv}{d\Theta}$)	s^{-1}	$1 \cdot 10^{-3}$	$3 \cdot 10^{-3}$	$1 \cdot 10^{-3}$
rotational velocity (Δv)	$m s^{-1}$	6	10	6
vorticity (ζ)	s^{-1}	$6 \cdot 10^{-3}$	10^{-2}	$6 \cdot 10^{-3}$
vertical depth (h)	m	0	3000	1000

Table B1. Mesocyclone detection thresholds

The range dependent thresholds help detecting significant rotation in complex observation situations. Due to the complex nature of the Swiss terrain, there is often no visibility of the lower portion of a storm. Additionally, the environmental conditions allowing for supercellular convection in Switzerland generally show a lower vertical shear than e.g. in the US plains. We tuned
 395 the thresholds by investigating visually confirmed cases of supercellular convection and range dependent thresholds that relax at very close and far ranges. While this may detect more storms as supercells, that were merely exhibiting significant rotation but otherwise lack the typical storm structure, we avoid missing detections due to observational issues.

B5 Temporal Continuity

Within a valid thunderstorm track, rotation of the same sign must have been detected at least 3 times within 10 minutes of
 400 each other. Additionally the rotation track must leave the range of 20 km around a radar. In strong linear wind situations, the geometric nature of the radial velocity produces artificial rotation signatures at opposing sides of the radar that remain stationary. These can produce false detections, but are easily removable considering that thunderstorms generally propagate.

Appendix C: Relative Quality Index

The relative quality index combines multiple physical constraints of the Swiss radar network and combines them to a single,
 405 summarizing quality index. The characteristics we include are: the vertical sum of theoretical visibility V (dimensionless, ranging from 0-1 for each elevation, in total ranging from 0-20), minimum altitude of observation h_{min} [m], maximum altitude of observation h_{max} [m], azimuthal resolution $\Delta\Theta$ [m] and discretisation in velocity shear ϵ [s^{-1}].

The theoretical visibility corresponds to the unblocked fraction of a radar beam at each location. It is derived combining the 5/4
 atmospheric refraction model and a digital elevation model to estimate beam blockage. The vertical sum over all 20 elevations
 410 is computed on a 2-D polar grid for each radar. In a similar fashion, the minimum and maximum altitudes of measurements are obtained from the altitude of the lowest and highest radar beam with 100 % visibility, yielding each a 2-D polar grid per radar. The resolution corresponds to the distance of each radar bin to its azimuthal neighbours. As we here work with the azimuthal derivative of Doppler velocity, we additionally introduce the quantization noise. The numeric resolution at which the Doppler velocity is stored introduces a small level of noise. The azimuthal derivative is strongly range-dependent, as it utilizes
 415 the azimuthal resolution. In the vicinity of the radars this noise reaches high levels and thus impacts the data quality. We here compute the noise level by dividing the numerical resolution by the azimuthal resolution.



After obtaining the radar-based grids for each variable, these are regridded to a 1 km resolution Cartesian grid, where the highest-quality index at each location of overlap is retained. An overview of the variables is shown in Fig. C1.

420 To constrain the fields to values that correspond to strong quality degradations, some fields are saturated at threshold values. The minimum altitude field's upper bound is saturated at 5 km ASL, corresponding to an inability to observe the lower atmosphere. The maximum altitude field's lower bound is saturated at 11 km, indicating a lack of convective top observations. The noise field's upper bound is saturated at $3 \cdot 10^{-3} \text{ s}^{-1}$, which is a critical threshold for rotation detection. Each Cartesian field of a characteristic is then rescaled between 0 and 1, utilizing the highest and lowest values present in the domain, so that 0 represents the lowest quality value and 1 the highest quality value. The normalization for the positively (Eq. C1), as well as negatively (Eq. C2) correlating variables is given in the following:

$$var_{p_norm} = \frac{var - var_{min}}{var_{max} - var_{min}} \quad (C1)$$

430 $var_{n_norm} = \frac{var_{max} - var}{var_{max} - var_{min}} \quad (C2)$

All characteristics are then combined by the following formula:

$$index = V_{p_norm} \cdot \frac{(h_{min,p_norm} + h_{max,n_norm} + \epsilon_{n_norm} + \Delta\theta_{n_norm}^2)}{4}$$

435 As visibility can degrade the quality to zero in absolute terms, it is used as a multiplicative factor. The other variables do not directly influence each other and are thus averaged at equal weights. To account for both horizontal and vertical azimuthal resolution, it is squared. The resulting quality index map for the Swiss domain is shown in the main manuscript in Fig. 1.

Appendix D: Case studies

Case B, as indicated in the map of Fig. 2, is located in the Valais Alps and was observed from Plaine Morte radar. It shows a case in complex, high-altitude terrain. Figure D1 shows the supercell at 10-30 km range and 200-240° azimuth, in the Doppler
440 velocity panel the location and direction of rotation is indicated with arrows. The hook shape in the reflectivity is less evident here compared to the event presented in Fig.2, but we can see a clear indentation in the high reflectivity values at the location of outgoing (blue) Doppler velocities, showing the perturbation from the rotation. We additionally show vertically integrated liquid (VIL) and probability of hail (POH) here to provide more context about the thunderstorm intensity.

The second case (Fig. D2) stems from the Rhine valley and comes closest to convection without orography in Switzerland.
445 Nonetheless the proximity of the Black Forest to the Northwest and Jura in the Southwest indicate that topography is a relevant factor everywhere in Switzerland. The supercell is at a further range than the previous cases (30-50 km, 330-30°), but nonetheless well observed. We can see a clear perturbation in the high reflectivity signature. The rotation in the Doppler velocity fields

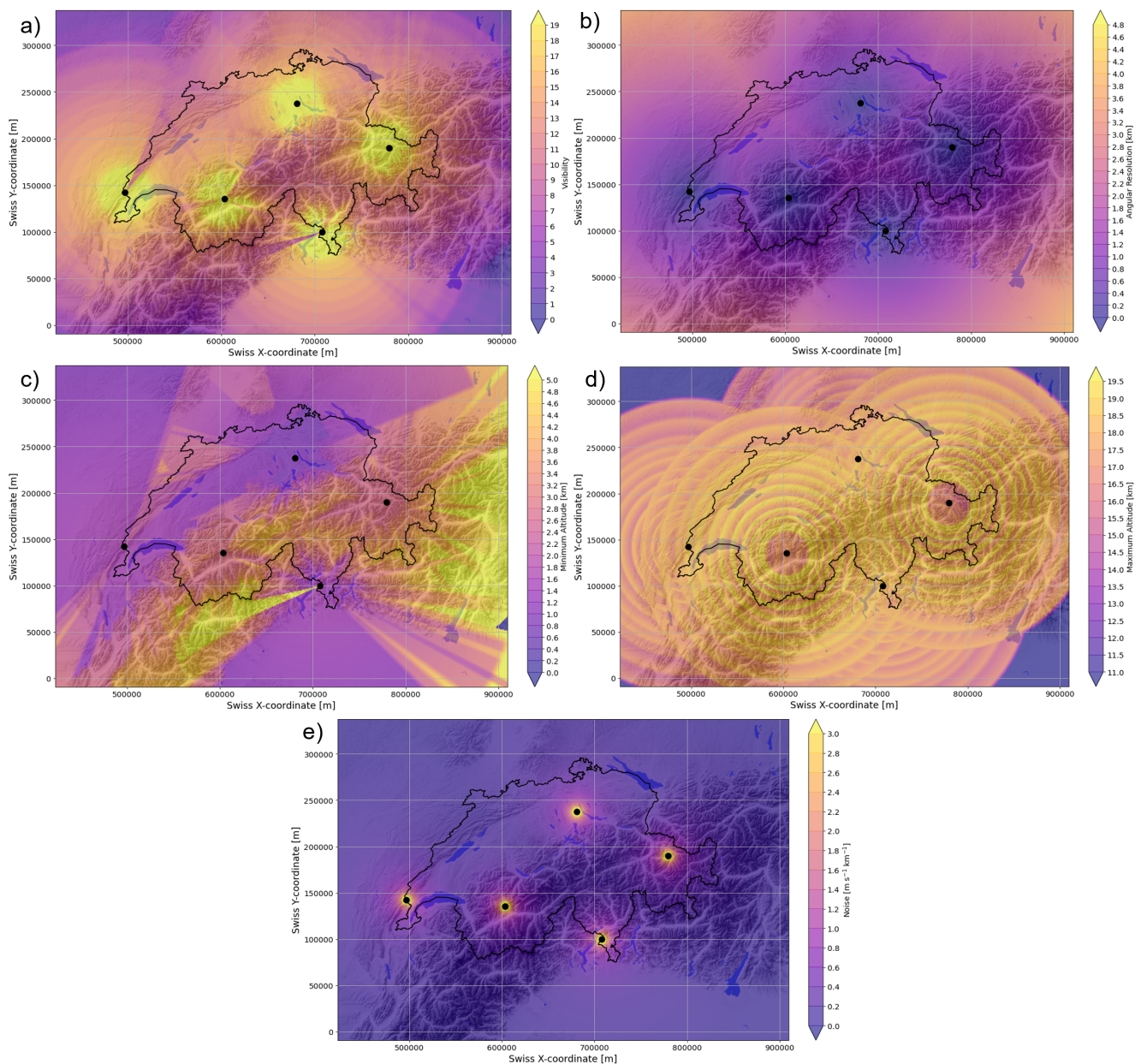


Figure C1. Components contributing to the relative quality index for mesocyclone detection in the Swiss radar network; a) vertical sum of visibility; b) azimuthal resolution; c) minimum altitude of observations; d) maximum altitude of observations; e) numerical noise in azimuthal velocity derivative

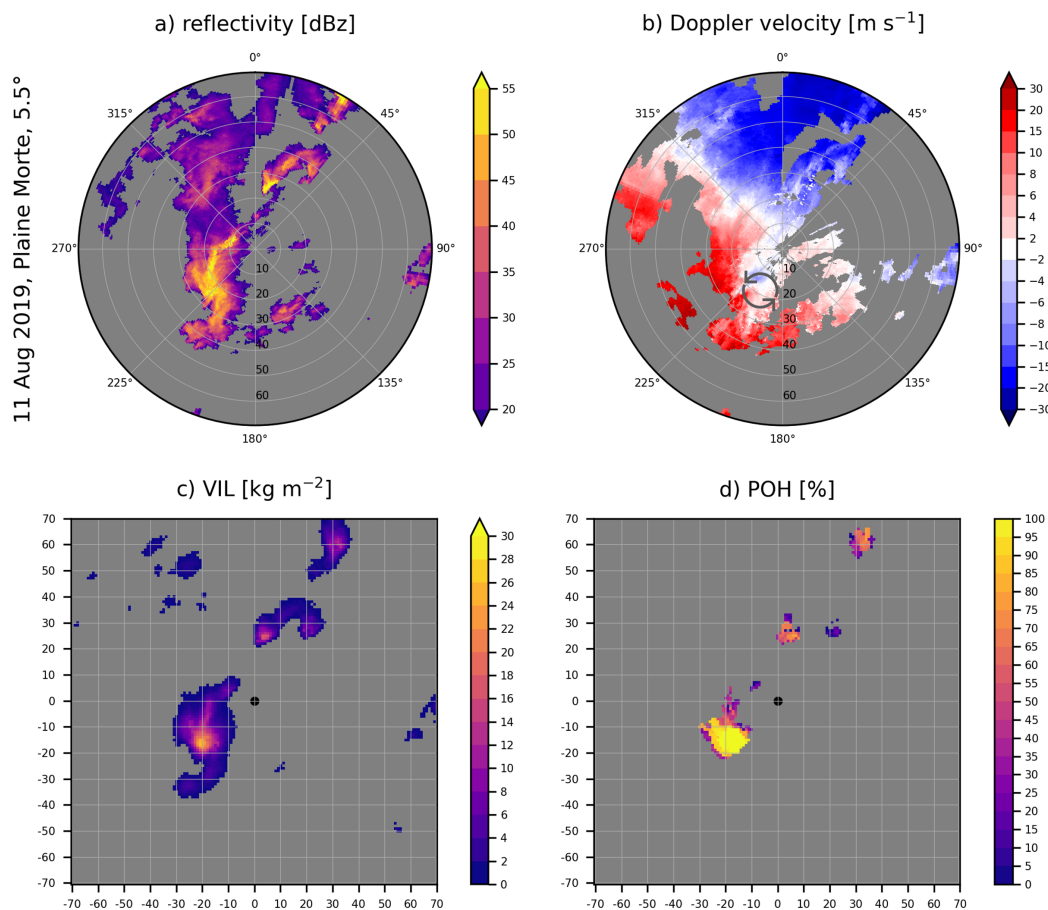


Figure D1. Supercell in Valais; August 11, 2019

is quite strong, averaging around 20 m s^{-1} . The main region of the thunderstorm shows high values VIL, as well as POH between 90 and 100 %. We can see that VIL is elevated and POH values are close to 100 % in a large portion of the storm.

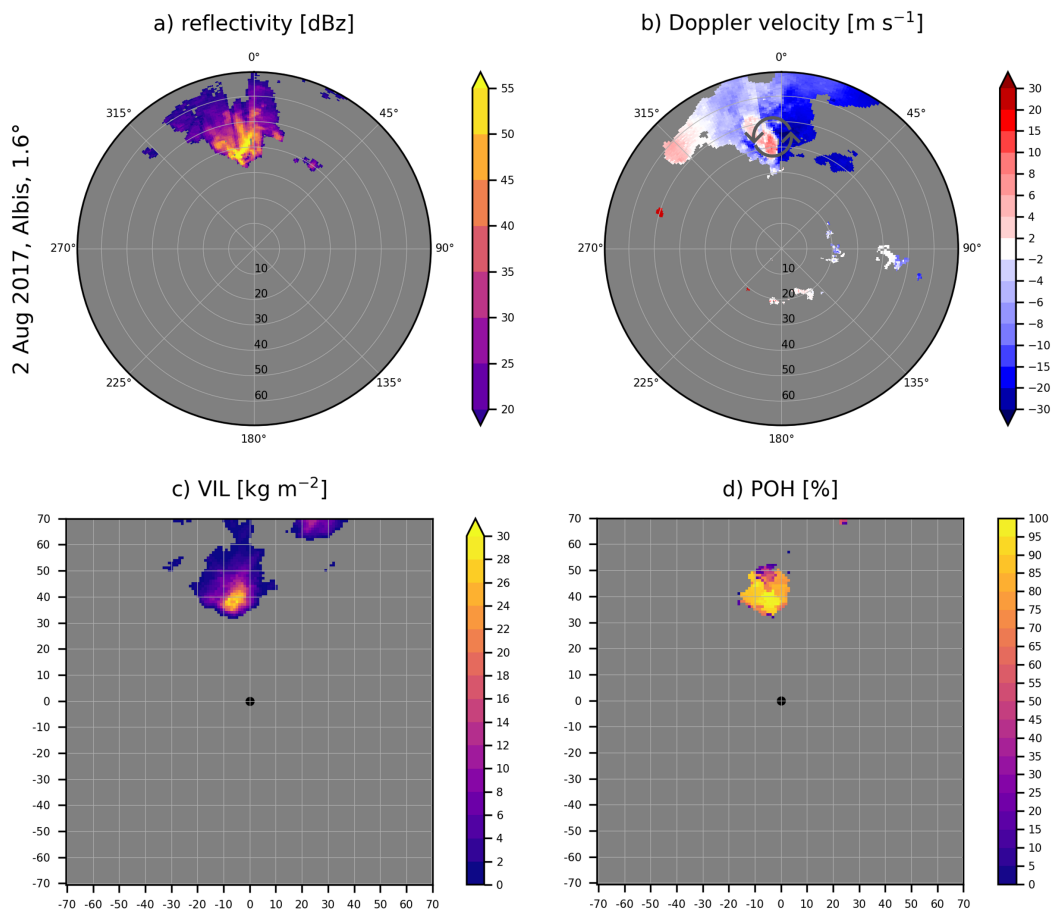


Figure D2. Supercell along the Rhine valley; August 2nd, 2017

Author contributions. This work has been done by Monika Feldmann as part of her PhD thesis under the supervision and with the support of Prof. Alexis Berne, Dr. Marco Gabella and Dr. Urs Germann.

Competing interests. No competing interests are present.

Acknowledgements. We would like to thank MeteoSwiss and EPFL for the possibility of conducting this research in this collaborative framework. We are particularly grateful for the assistance of Daniele Nerini and Loris Foresti in adding the T-DaTing algorithm to the pySTEPS package. Advice and feedback provided by Alessandro Hering on the reconstruction of a thunderstorm tracking algorithm was greatly appreciated.



References

- Avolio, E., Nisi, L., Panziera, L., Peyraud, L., and Miglietta, M. M.: A multi-sensor and modeling analysis of a severe convective storm
460 in Lake Maggiore area (northwestern Italy), *Atmospheric Research*, 242, 105 008, <https://doi.org/10.1016/j.atmosres.2020.105008>, <https://linkinghub.elsevier.com/retrieve/pii/S0169809520300375>, 2020.
- Barras, H., Hering, A., Martynov, A., Noti, P. A., Germann, U., and Martius, O.: Experiences with >50,000 crowdsourced hail reports in
Switzerland, *Bulletin of the American Meteorological Society*, 100, 1429–1440, <https://doi.org/10.1175/BAMS-D-18-0090.1>, 2019.
- Bluestein, H. B.: A History of Severe-Storm-Intercept Field Programs, *Weather and Forecasting*, 14, 558–577,
465 [https://doi.org/10.1175/1520-0434\(1999\)014<0558:AHOSSI>2.0.CO;2](https://doi.org/10.1175/1520-0434(1999)014<0558:AHOSSI>2.0.CO;2), <https://journals.ametsoc.org/waf/article/14/4/558/382771>
A-History-of-Severe-Storm-Intercept-Field-Programs, publisher: American Meteorological Society, 1999.
- Consortium for Small Scale Modelling: MeteoSwiss Operational Applications within COSMO, accessed on 2020-01-20, <http://www.cosmo-model.org/content/tasks/operational/meteoSwiss/default.htm#cosmo-1>, 2018.
- Diffenbaugh, N. S., Scherer, M., and Trapp, R. J.: Robust increases in severe thunderstorm environments in response to greenhouse forcing,
470 *Proceedings of the National Academy of Sciences*, 110, 16 361–16 366, <https://doi.org/10.1073/pnas.1307758110>, <http://www.pnas.org/cgi/doi/10.1073/pnas.1307758110>, 2013.
- Feldmann, M., James, C. N., Boscacci, M., Leuenberger, D., Gabella, M., Germann, U., Wolfensberger, D., and Berne, A.: R2D2: A Region-
Based Recursive Doppler Dealiasing Algorithm for Operational Weather Radar, *Journal of Atmospheric and Oceanic Technology*, 37,
2341–2356, <https://doi.org/10.1175/JTECH-D-20-0054.1>, <https://journals.ametsoc.org/view/journals/atot/37/12/jtech-d-20-0054.1.xml>,
475 2020.
- Feldmann, M., Gabella, M., Germann, U., and Berne, A.: Radar-based mesocyclone detections in Switzerland from 2016–2020,
<https://doi.org/10.5281/zenodo.5122519>, 2021.
- Figueras i Ventura, J., Pineda, N., Besic, N., Grazioli, J., Hering, A., Van Der Velde, O. A., Romero, D., Sunjerga, A., Mostajabi, A., Azadifar,
M., Rubinstein, M., Montanyà, J., Germann, U., and Rachidi, F.: Analysis of the lightning production of convective cells, *Atmospheric*
480 *Measurement Techniques*, 12, 5573–5591, <https://doi.org/10.5194/amt-12-5573-2019>, 2019.
- Frew, E. W., Argrow, B., Borenstein, S., Swenson, S., Hirst, C. A., Havenga, H., and Houston, A.: Field observation of tornadic supercells
by multiple autonomous fixed-wing unmanned aircraft, *Journal of Field Robotics*, 37, 1077–1093, <https://doi.org/10.1002/rob.21947>,
<https://onlinelibrary.wiley.com/doi/abs/10.1002/rob.21947>, 2020.
- Garcia de Jesus, E. I.: Tornado scientists send drone fleet into violent thunderstorms, *Nature*, <https://doi.org/10.1038/d41586-019-01486-y>,
485 <http://www.nature.com/articles/d41586-019-01486-y>, 2019.
- Germann, U., Boscacci, M., Gabella, M., and Schneebeli, M.: Weather radar in Switzerland - in "From weather observations to atmospheric
and climate sciences in Switzerland", edited by S. Willemse and M. Furger, vdf, 2016.
- Grazioli, J., Leuenberger, A., Peyraud, L., Figueras, J., Gabella, M., Hering, A., and Germann, U.: Adaptive thunder-
storm measurements using C-band and X-band radar data, *IEEE Geoscience and Remote Sensing Letters*, 16, 1673–1677,
490 <https://doi.org/10.1109/LGRS.2019.2909970>, 2019.
- Hengstebeck, T., Wapler, K., Heizenreder, D., and Joe, P.: Radar Network – Based Detection of Mesocyclones at the German Weather
Service, *Journal of Atmospheric and Oceanic Technology*, 35, 299–321, <https://doi.org/10.1175/JTECH-D-16-0230.1>, 2018.



- Hering, A. M., Morel, C., Galli, G., Ambrosetti, P., and Boscacci, M.: Nowcasting thunderstorms in the Alpine Region using a radar based adaptive thresholding scheme, Proc. ERAD Conference 2004, pp. 206–211, <http://www.meteoschweiz.admin.ch/web/en/research/completed{ }projects/trt.Related.0002.DownloadFile.tmp/erad04p00039trt.pdf>, 2004.
- 495 Houze, R. A., Schmid, W., Fovell, R. G., and Schiesser, H.-H.: Hailstorms in Switzerland: Left Movers, Right Movers, and False Hooks, *Monthly Weather Review*, 121, 3345–3370, [https://doi.org/10.1175/1520-0493\(1993\)121<3345:hislmr>2.0.co;2](https://doi.org/10.1175/1520-0493(1993)121<3345:hislmr>2.0.co;2), 1993.
- Jarvis, A., Reuter, H., Nelson, A., and Guevara, E.: Hole-filled SRTM for the globe Version 4, available from the CGIAR-CSI SRTM 90m Database, <http://srtm.csi.cgiar.org>, 2008.
- 500 Lucas, B. D. and Takeo, K.: An Iterative Image Registration Technique with an Application to Stereo Vision, in: Proceedings of 7th International Joint Conference on Artificial Intelligence (IJCAI '81), vol. 2, pp. 674 – 679, 1981.
- Markowski, P. and Richardson, Y.: *Mesoscale Meteorology in Midlatitudes*, Wiley-Blackwell, 2010.
- MeteoSchweiz: Das Schweizer Wetterradarnetz, accessed on 2019-12-12, https://www.meteoswiss.admin.ch/content/dam/meteoswiss/de/Mess-und-Prognosesysteme/Atmosphaere/Radarnetz/doc/20170830_Radarnetz_DE_einzeln.pdf, 2018.
- 505 Miller, M. L., Lakshmanan, V., and Smith, T. M.: An Automated Method for Depicting Mesocyclone Paths and Intensities, *Weather and Forecasting*, 28, 570–585, <https://doi.org/10.1175/WAF-D-12-00065.1>, 2013.
- Mohr, S. and Kunz, M.: Recent trends and variabilities of convective parameters relevant for hail events in Germany and Europe, *Atmospheric Research*, 123, 211–228, <https://doi.org/10.1016/j.atmosres.2012.05.016>, <http://dx.doi.org/10.1016/j.atmosres.2012.05.016>, 2013.
- Mohr, S., Wilhelm, J., Wandel, J., Kunz, M., Portmann, R., Punge, H. J., Schmidberger, M., Quinting, J. F., and Grams, C. M.: The role of
510 large-scale dynamics in an exceptional sequence of severe thunderstorms in Europe May–June 2018, *Weather and Climate Dynamics*, 1, 325–348, <https://doi.org/10.5194/wcd-1-325-2020>, <https://wcd.copernicus.org/articles/1/325/2020/>, 2020.
- Mulholland, J. P., Nesbitt, S. W., and Trapp, R. J.: A Case Study of Terrain Influences on Upscale Convective Growth of a Supercell, *Monthly Weather Review*, 147, 4305–4324, <https://doi.org/10.1175/MWR-D-19-0099.1>, <http://journals.ametsoc.org/doi/10.1175/MWR-D-19-0099.1>, 2019.
- 515 Mulholland, J. P., Nesbitt, S. W., Trapp, R. J., and Peters, J. M.: The Influence of Terrain on the Convective Environment and Associated Convective Morphology from an Idealized Modeling Perspective, *Journal of the Atmospheric Sciences*, 77, 3929–3949, <https://doi.org/10.1175/JAS-D-19-0190.1>, <https://journals.ametsoc.org/doi/10.1175/JAS-D-19-0190.1>, 2020.
- Munich Re: Severe thunderstorms in Europe, accessed on 2021-05-17, <https://www.munichre.com/topics-online/en/climate-change-and-natural-disasters/natural-disasters/storms/severe-thunderstorms-europe-2015.html>, 2016.
- 520 NCCS: Hail Climate Switzerland - National hail hazard maps, National Centre for Climate Services, www.hailclimatology.ch, 2021.
- Nesbitt, S. W., Salio, P. V., Ávila, E., Bitzer, P., Carey, L., Chandrasekar, V., Deierling, W., Dominguez, F., Dillon, M. E., Garcia, C. M., Gochis, D., Goodman, S., Hence, D. A., Kosiba, K. A., Kumjian, M. R., Lang, T., Luna, L. M., Marquis, J., Marshall, R., McMurdie, L. A., Nascimento, E. L., Rasmussen, K. L., Roberts, R., Rowe, A. K., Ruiz, J. J., São Sabbas, E. F., Saulo, A. C., Schumacher, R. S., Skabar, Y. G., Machado, L. A. T., Trapp, R. J., Varble, A., Wilson, J., Wurman, J., Zipser, E. J., Arias, I., Bechis, H., and
525 Grover, M. A.: A storm safari in Subtropical South America: proyecto RELAMPAGO, *Bulletin of the American Meteorological Society*, pp. 1–64, <https://doi.org/10.1175/BAMS-D-20-0029.1>, <https://journals.ametsoc.org/view/journals/bams/aop/BAMS-D-20-0029.1/BAMS-D-20-0029.1.xml>, 2021.
- Nisi, L., Martius, O., Hering, A., Kunz, M., and Germann, U.: Spatial and temporal distribution of hailstorms in the Alpine region: A long-term, high resolution, radar-based analysis, *Quarterly Journal of the Royal Meteorological Society*, 142, 1590–1604,
530 <https://doi.org/10.1002/qj.2771>, 2016.



- Nisi, L., Hering, A., Germann, U., and Martius, O.: A 15-year hail streak climatology for the Alpine region, *Quarterly Journal of the Royal Meteorological Society*, 144, 1429–1449, <https://doi.org/10.1002/qj.3286>, <https://onlinelibrary.wiley.com/doi/abs/10.1002/qj.3286>, 2018.
- Nisi, L., Hering, A., Germann, U., Schroerer, K., Barras, H., Kunz, M., and Martius, O.: Hailstorms in the Alpine region: Diurnal cycle, -characteristics, and the nowcasting potential of lightning properties, *Quarterly Journal of the Royal Meteorological Society*, 146, 4170–4194, <https://doi.org/10.1002/qj.3897>, <https://onlinelibrary.wiley.com/doi/10.1002/qj.3897>, 2020.
- NSSL: VORTEX @ NSSL, accessed on 2021-05-17, <https://www.nssl.noaa.gov/projects/vortex/>, 2019.
- Peyraud, L.: Analysis of the 18 July 2005 Tornadoic Supercell over the Lake Geneva Region, *Weather and Forecasting*, 28, 1524–1551, <https://doi.org/10.1175/waf-d-13-00022.1>, 2013.
- 540 Pulkkinen, S., Nerini, D., Pérez Hortal, A. A., Velasco-Forero, C., Seed, A., Germann, U., and Foresti, L.: Pysteps: an open-source Python library for probabilistic precipitation nowcasting (v1.0), *Geoscientific Model Development*, 12, 4185–4219, <https://doi.org/10.5194/gmd-12-4185-2019>, <https://gmd.copernicus.org/articles/12/4185/2019/>, 2019.
- PySteps developers: pySTEPS – The nowcasting initiative, accessed on 2021-05-17, <https://pysteps.readthedocs.io/en/latest/>, 2021.
- Rädler, A. T., Groenemeijer, P. H., Faust, E., Sausen, R., and Púčik, T.: Frequency of severe thunderstorms across Europe expected to increase
545 in the 21st century due to rising instability, *npj Climate and Atmospheric Science*, 2, 3–7, <https://doi.org/10.1038/s41612-019-0083-7>, 2019.
- Serafin, S., Rotach, M. W., Arpagaus, M., Colfescu, I., Cuxart, J., De Wekker, S. F. J., Evans, M., Grubišić, V., Kalthoff, N., Karl, T., Kirshbaum, D. J., Lehner, M., Mobbs, S., Paci, A., Palazzi, E., Raudzens Bailey, A., Schmidli, J., Wohlfahrt, G., and Zardi, D.: Multi-scale transport and exchange processes in the atmosphere over mountains, innsbruck university press, 1 edn., <https://doi.org/10.15203/99106-003-1>, https://uibk.ac.at/iup/buch_pdfs/10.1520399106-003-1.pdf, 2020.
- 550 Stumpf, G. J., Witt, A., Mitchell, E. D., Spencer, P. L., Johnson, J. T., Eilts, M. D., Thomas, K. W., and Burgess, D. W.: The National Severe Storms Laboratory Mesocyclone Detection Algorithm for the WSR-88D, *Weather and Forecasting*, 13, 304–326, [https://doi.org/10.1175/1520-0434\(1998\)013<0304:TNSSLM>2.0.CO;2](https://doi.org/10.1175/1520-0434(1998)013<0304:TNSSLM>2.0.CO;2), 1998.
- Sturmarchiv Schweiz: Sturmarchiv Schweiz - Tornados, accessed on 2021-05-15, <https://www.sturmarchiv.ch/index.php?title=Tornados>,
555 2021.
- ©swisstopo: DHM25 / 200m, <https://www.swisstopo.admin.ch/de/geodata/height/dhm25200.html>, 2005.
- Trefalt, S., Martynov, A., Barras, H., Besic, N., Hering, A. M., Lenggenhager, S., Noti, P., Röthlisberger, M., Schemm, S., Germann, U., and Martius, O.: A severe hail storm in complex topography in Switzerland - Observations and processes, *Atmospheric Research*, 209, 76–94, <https://doi.org/10.1016/j.atmosres.2018.03.007>, <https://doi.org/10.1016/j.atmosres.2018.03.007>, 2018.
- 560 Varble, A. C., Nesbitt, S. W., Salio, P., Hardin, J. C., Bharadwaj, N., Borque, P., DeMott, P. J., Feng, Z., Hill, T. C. J., Marquis, J. N., Matthews, A., Mei, F., Öktem, R., Castro, V., Goldberger, L., Hunzinger, A., Barry, K. R., Kreidenweis, S. M., McFarquhar, G. M., McMurdie, L. A., Pekour, M., Powers, H., Romps, D. M., Saulo, C., Schmid, B., Tomlinson, J. M., van den Heever, S. C., Zelenyuk, A., Zhang, Z., and Zipser, E. J.: Utilizing a Storm-Generating Hotspot to Study Convective Cloud Transitions: The CACTI Experiment, *Bulletin of the American Meteorological Society*, pp. 1–67, <https://doi.org/10.1175/BAMS-D-20-0030.1>, <https://journals.ametsoc.org/view/journals/bams/aop/BAMS-D-20-0030.1/BAMS-D-20-0030.1.xml>, 2021.
- 565 Wapler, K.: The life-cycle of hailstorms : Lightning , radar reflectivity and rotation characteristics, *Atmospheric Research*, 193, 60–72, <https://doi.org/10.1016/j.atmosres.2017.04.009>, 2017.



- Wapler, K., Hengstebeck, T., and Groenemeijer, P.: Mesocyclones in Central Europe as seen by radar, *Atmospheric Research*, 168, 112–120, <https://doi.org/10.1016/j.atmosres.2015.08.023>, <http://dx.doi.org/10.1016/j.atmosres.2015.08.023>, 2016.
- 570 Weusthoff, T.: Weather Type Classification at MeteoSwiss, p. 48, 2011.
- Zrnić, D. S., Burgess, D. W., and Hennington, L. D.: Automatic Detection of Mesocyclonic Shear with Doppler Radar, *Journal of Atmospheric and Oceanic Technology*, 2, 425–438, [https://doi.org/10.1175/1520-0426\(1985\)002<0425:adomsw>2.0.co;2](https://doi.org/10.1175/1520-0426(1985)002<0425:adomsw>2.0.co;2), 1985.