

Supplementary Material

How intense daily precipitation depends on temperature and the occurrence of specific weather systems – an investigation with ERA5 reanalyses in the extratropical Northern Hemisphere

Philipp Zschenderlein¹ and Heini Wernli¹

¹Institute of Atmospheric and Climate Science, ETH Zürich, Universitätsstr. 16, 8092 Zürich, Switzerland

Correspondence: philipp.zschenderlein@env.ethz.ch

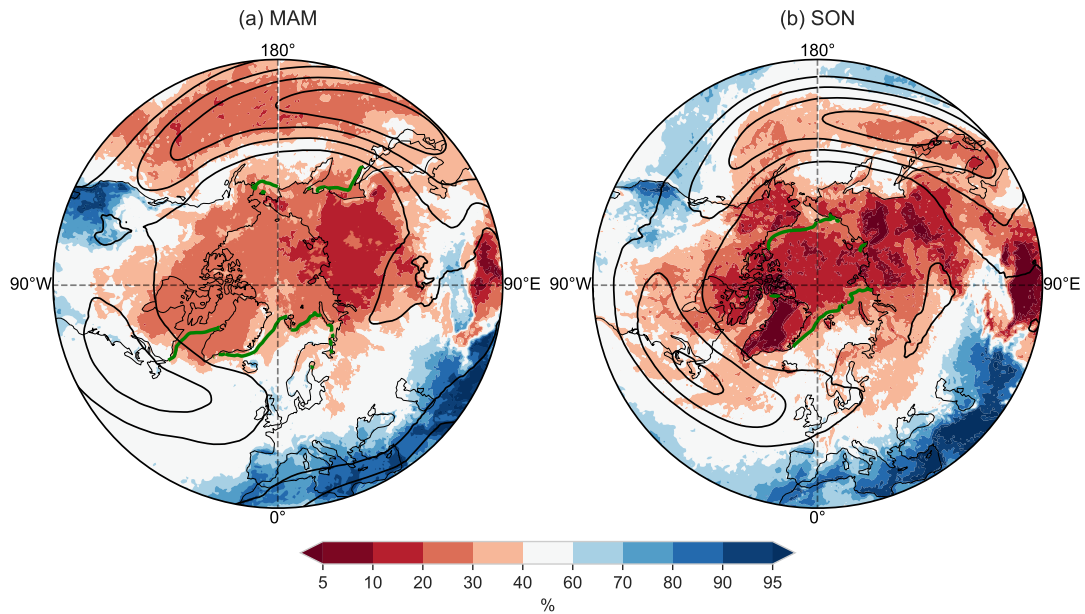
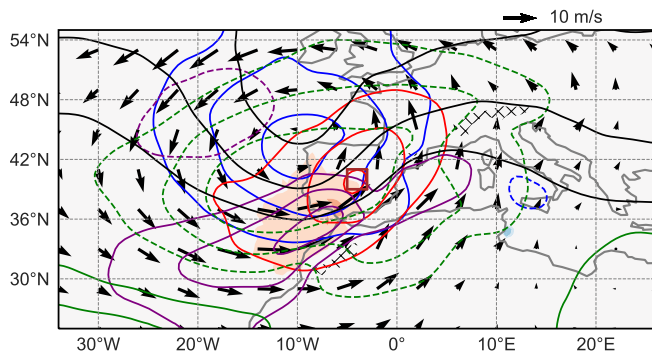


Figure S1. Fraction of wet days below the median of the local 2-m temperature distribution (WBM measure, see Section 2.1) in (a) spring (MAM) and (b) autumn (SON). Black contours depict windspeed at 300 hPa starting from 25 m s^{-1} in 5 m s^{-1} increments, and the green contour illustrates the climatological sea ice concentration of 50%.

(a) IBP



(b) W-US

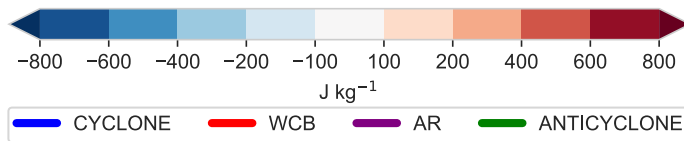
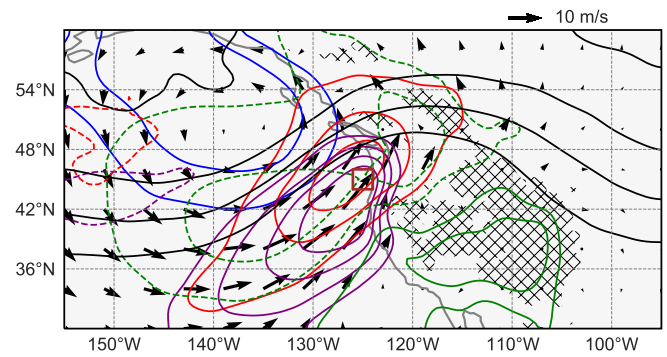
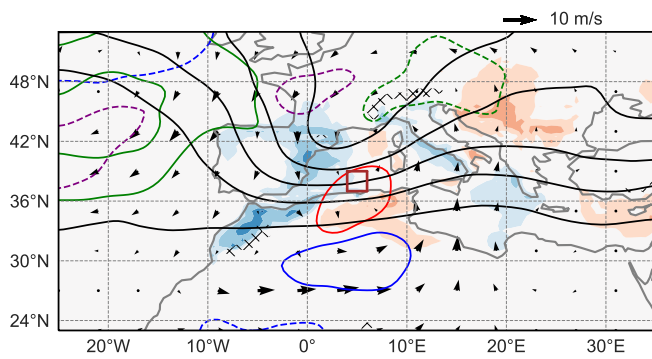


Figure S2. Composites for wet days in winter in the regions (a) IBP and (b) W-US. Coloured contours show frequency anomalies of cyclones (blue), warm conveyor belts (red), atmospheric rivers (purple) and anticyclones (green) for values of -40, -30, -20, -10, 10, 20, 30 and 40 %. The arrows mark the anomalous wind at 850 hPa. The black line illustrates upper-level PV at 320 K, starting from 2 pvu in 1 pvu increments. Colour shading denotes anomalies of daily maximum CAPE. All anomalies are calculated with respect to the seasonal mean climatology and the hatching marks altitudes of 1500 m. The contours of the weather features have been smoothed with a Gaussian filter.

(a) MED



(b) W-US

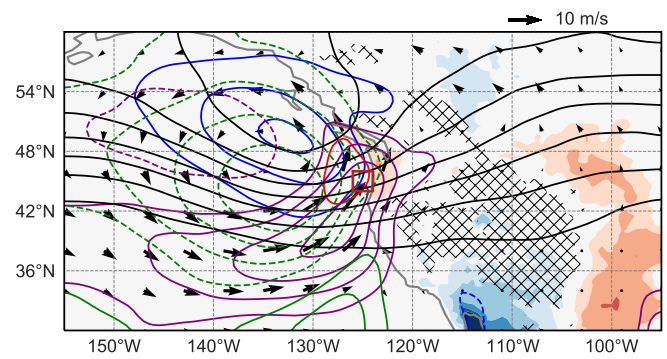


Figure S3. Same as Fig. S2, but for summer in (a) MED and (b) W-US. The black contours denote PV at 340 K.