

# Stratospheric wave driving events as an alternative to sudden stratospheric ~~sudden~~-warmings

Thomas Reichler<sup>1</sup>, Martin Jucker<sup>2,3</sup>

<sup>1</sup>Department of Atmospheric Sciences, University of Utah, Salt Lake City, 84112, USA

<sup>2</sup>Climate Change Research Center, the University of New South Wales, Sydney, NSW, Australia

<sup>3</sup>Australian Research Council Center of Excellence for Climate Extremes, Sydney, NSW, Australia

Correspondence to: Thomas Reichler (thomas.reichler@utah.edu)

**Abstract.** Natural variations in the strength of the northern stratospheric polar vortex, so-called polar vortex events, help to improve sub-seasonal to seasonal (S2S) predictions of winter climate. Past research on polar vortex events has been largely focused on ~~sudden~~ stratospheric ~~sudden~~-warming events (SSWs), a class of relatively strong weakenings of the polar vortex. ~~Commonly~~, SSWs are defined when the polar vortex reverses its ~~climatological wintertime normal~~-westerly wind direction. In this study, however, we use an alternative definition, based on the weighted time-integrated upward wave activity flux at the lower stratosphere ~~prior to the onset of the events~~. We use a long control simulation with a stratosphere-resolving model and the ERA5 reanalysis to compare various aspects of the wave activity definition with ~~traditional-common~~ SSWs over the Arctic. About half of the wave events are identical to ~~common~~ SSWs, ~~while the other half create on average more robust surface signals than the SSWs that do not occur with the wave events~~. ~~However, there exist several advantages for defining stratospheric weak extremes based on wave events rather than using the common SSW definition~~ ~~There exist several other advantages over traditional SSWs: the wave activity flux definition~~ ~~creates more robust surface signals~~, captures with one ~~simple-criterion~~ a variety of different event types, lengthens the prediction horizon of the surface response, and can be more meaningfully applied over the ~~Southern hemisphere~~ ~~Hemisphere~~. We therefore conclude that ~~that~~ the wave driving represents a useful early indicator for stratospheric polar vortex events, which exploits the stratospheric potential for creating predictable surface signals better than ~~common~~ SSWs.

## 1 Introduction

The polar vortex is the dominating circulation feature of the northern high latitude wintertime stratosphere. The vortex undergoes pronounced intraseasonal fluctuations in strength (Christiansen, 1999; Kuroda and Kodera, 2001), which we broadly refer to as polar vortex events. The events are of interest because they persist for several weeks and couple downward into the troposphere to influence surface weather (Baldwin et al., 2003). Knowledge about the events therefore improves tropospheric predictions on subseasonal-to-seasonal (S2S) time scales (Sigmond et al., 2013; Scaife et al., 2021; Domeisen et al., 2020c).

Sudden stratospheric warmings (SSWs) represent the most extreme and best studied example of polar vortex events (Scherhag, 1952; Baldwin et al., 2021). During SSWs, the polar vortex decelerates over the course of a few days and warms at its inner core. This is typically followed by a negative polarity of the annular mode at the surface and a southward shift of the tropospheric mid-latitude jet that lasts for up to two months (Kidston et al., 2015). SSWs also influence the photochemistry of the ozone layer (McLlandress and Shepherd, 2009) and increase the amount of stratospheric ozone (Hong and Reichler, 2021). Minor SSWs are usually distinguished from major SSWs. Major SSWs are the most extreme events, in which the vortex completely breaks down and reverses its climatological wintertime normal-westerly direction. Minor SSWs are less intense, with vortex winds that remain westerly over the course of an event (e.g., Labitzke, 1981). The stratosphere also undergoes prolonged periods with a much stronger than normal vortex, so-called strong vortex or vortex intensification events. These events develop more gradually than weak vortex events, but the meteorological changes associated with them are more or less opposite to that of weak vortex events (Limpasuvan et al., 2005; Baldwin and Dunkerton, 2001).

Different methods have been proposed for the detection of polar vortex events; the papers by Palmeiro et al. (2015) and Butler et al. (2015) give excellent overviews. Most of the methods have in common that some property (e.g., temperature, zonal wind, or geopotential height) of the polar vortex is used, either in terms of an absolute threshold, a pattern, a gradient, or a tendency. Birner and Albers (2017), for example, use the tendency of the zonal mean flow to better capture “the explosive dynamics of these events”. SSWs are defined in various ways (Palmeiro et al., 2015; Butler et al., 2015), but the most common definition, however, is based on a reversal of the zonal-mean zonal wind of the polar vortex at mid-stratospheric levels (at 60°N and 10 hPa) (Charlton and Polvani, 2007) (hereafter: CP07). The wind reversal is significant because it represents the complete destruction of the vortex and sets an important condition for wave propagation: easterly winds inhibit the upward propagation of planetary-scale waves (Charney and Drazin, 1961) and is necessary for critical layer interaction (Matsuno, 1971). Arguably, this is important for the intense nature of SSWs and their downward influence to the surface troposphere. Because of the reversal criterion, the events captured by the CP07 Charlton and Polvani-definition are all major SSWs, and for the remainder of this study, we refer to these events simply as SSWs.

The extreme nature of SSWs is probably an important reason for why they have been studied so intensely in the past. However, to date it is unclear how effective the CP07 SSW definition is in capturing events with a downward influence from the stratosphere to the troposphere, which is one of the main reasons for studying polar vortex events in the first place. For example, a study by Sigmond et al. (2013) found that SSWs were followed only in 2/3 of the investigated cases by the expected negative Northern Annular Mode (NAM) (Baldwin and Dunkerton, 2001) at the surface. Another downside of the CP07 SSW-definition is that it is based on a fixed threshold and, as long as the zonal wind reverses, the definition also detects the perturbation of a climatologically weak vortex that presumably has a relatively small surface impact. In addition, similarly, events that do not cross the threshold but that nevertheless may have a strong surface impact remain undetected by the fixed threshold



definition. ~~In addition, the frequency of SSWs simulated by a model is likely to be affected by biases in the strength of the polar vortex if a fixed threshold criterion is used~~ (e.g., Kim et al., 2017).

65 ~~The latter problem is closely related to the rare occurrence of SSWs over the Southern Hemisphere (SH) and the seasonal phase-locking of SH SSWs towards the end of winter (Jucker et al., 2021). More precisely, the stronger polar vortex over the SH compared to the northern hemisphere (NH) makes it more difficult for the SH vortex to reverse its direction, despite the occasional occurrence of strong wave forcings and vortex responses.~~

70 The ~~traditional CP07 SSW~~ definition has ~~some more~~ shortcomings. For example, climate-change-related long-term trends in the strength of the polar vortex (Karpechko and Manzini, 2017) may change the number of SSWs, even when the stratospheric variability remains unchanged (Mclandress and Shepherd, 2009; Kim et al., 2017). In addition, the ~~SSW-CP07~~ definition is not oriented on the dynamical causes that precede the events but instead on their ~~stratospheric~~ effect. ~~This may be relevant for the prediction of polar vortex events in the context of S2S applications, since a more cause-centered approach could lengthen the relatively short 1-2 week-long predictability limit for polar vortex events (Domeisen et al., 2020b).~~

75 ~~This may lead to a loss of prediction lead time for S2S applications. For these reasons, one might wonder whether there exists perhaps a more dynamically oriented alternative to the traditional SSW definition, which captures events that ideally have a higher occurrence frequency, stronger surface impact, and longer prediction lead time than SSWs.~~

80 The purpose of this study ~~is~~ to present and evaluate ~~such~~ an alternative definition ~~for polar vortex events, which avoids some of the shortcomings of the CP07 definition~~. The ~~new~~ definition is based on the upward planetary-scale wave activity flux at 100 hPa, ~~or, This is equivalently, to~~ the poleward eddy heat flux, ~~and which~~ is often referred to as the “stratospheric wave driving” (Newman and Nash, 2000)<sup>1</sup>. It is well known that the wave driving plays an essential role for the stratospheric circulation. This recognition goes back to the Matsuno model for SSWs (Matsuno, 1971), providing the first dynamical explanation for SSWs in terms of the interaction of vertically propagating planetary-scale waves with the zonal flow. Later, Newman et al. (2001) used the transformed Eulerian mean framework (Andrews et al., 1987) to further clarify from  
85 by Matsuno was also followed by numerous modelling studies, which investigated the generation of SSWs by planetary-scale waves (e.g., Holton and Mass, 1976; Reichler et al., 2005). A statistical analysis by Jucker and Reichler (2018) showed that the wave driving increases the probability of SSWs within the following three weeks and thus helps predicting SSWs. Other studies linked periods of reduced wave driving and the resulting absence of wave-mean flow interaction to the  
90 formation of strong vortex events (e.g., Limpasuvan et al., 2005; Lawrence et al., 2020; Polvani and Waugh, 2004).

Formatted: English (US)

Formatted: English (US)

Formatted: English (US)

Formatted: English (US)

Formatted: English (US)

Formatted: English (US)

Formatted: English (US)

Formatted: English (US)

Formatted: English (US)

Formatted: English (US)

Formatted: English (US)

<sup>1</sup> The term wave driving is perhaps somewhat misleading because it is the convergence of the wave flux and not the flux itself that drives the polar vortex. However, in the literature, wave driving is often used to refer to the flux, and we keep with this tradition.

Using the wave driving for the detection of polar vortex events is not new. Polvani and Waugh (2004) used a threshold criterion based on the 40-day averaged upward flux at 100 hPa to define events. The NAM composites that followed the events (their Fig. 4) looked very similar to the famous “dripping paint” plots by Baldwin and Dunkerton (2001), demonstrating that the wave activity flux is an indicator for subsequent polar vortex events. However, there remain many open questions. For example, a systematic comparison between SSWs and wave driving events has not been performed, leaving it unclear how robustly the polar vortex and the surface respond to the wave driving in comparison to SSWs. Also, a statistical characterization of wave driving events and how they compare to SSWs is still missing.

Another question concerns the exact wave driving criterion that should be used to define the events. Most previous studies agreed that the wave activity flux in the lower stratosphere (100 hPa) is important, since at this level the filtering of the waves at the tropopause is no longer an issue (Chen and Robinson, 1992). We note that the flux at 100 hPa should not be simply interpreted as a wave propagation from the troposphere into the stratosphere. Cámara et al. (2017) showed that only 1/3 of the wave flux variance at 100 hPa can be explained from the flux in the upper troposphere (300 hPa). They argued that the 100 hPa level is well above the extratropical tropopause and thus already under the considerable influence of stratospheric processes. In the context of our study, however, the exact source for the wave activity flux is less important.

Several previous studies also indicated that daily values of the wave activity flux are less important than the time-integrated values. For example, Newman et al. (2001) showed that the 45-day accumulated wave driving at 100 hPa in middle to late winter was highly correlated with the subsequent March polar stratospheric temperatures. Further, observational studies showed that individual wave driving events tended to last for one to two weeks (Randel et al., 2002), and that perturbations of the polar vortex on a given day were not so much related to the instantaneous upward wave activity as to its integral over several weeks prior to that date (Polvani and Waugh, 2004). Similarly, Sjöberg and Birner (2012) found that wave driving with a relatively long time-scale ( $> 9$  days) was more effective in generating SSWs than a strong but short pulse of wave activity. Therefore, and as we will explain in more detail below, we consider in our study a weighted time-integral of the wave driving at the lower stratosphere (100 hPa) to define polar vortex events. As mentioned above, the 100 hPa level is probably the most common way to measure the wave activity flux that enters the stratosphere. The 100 hPa level is well above the extratropical tropopause (ca. 200 hPa), but also low enough to create some extra lead time between wave activity flux and vortex perturbation. This time of ca. 4 days is needed for the waves to propagate from the lower to the middle stratosphere and undergo wave–mean flow interaction (Horan and Reichler, 2017).

We examine a modern reanalysis data set and a long simulation with a realistic coupled stratosphere-resolving model to expand and clarify the findings from previous studies. This is achieved by consequently comparing the results from the wave driving definition against the Charlton and Polvani SSW definition. Because the atmosphere is chaotic, we describe most of our results in a statistical sense, which is greatly facilitated by using the data from the long model simulation. The large number of events captured by this simulation allows detailed examination of distributions and sub-samples of specific events. Most of our analysis is complemented by an investigation of the reanalysis to provide a baseline for the observed

atmosphere. Further, we mostly focus on events preceded by anomalously positive wave driving because of their similarity  
125 to SSWs, but where practical, we also include events with a reduced wave driving.

Section 2 of this paper starts with explaining our data and the model simulation. Section 2 goes on to describe how we define  
the wave driving events and we explain our statistical methods. The results in Section 3 have seven parts. First, we validate  
the model in terms of quantities that are relevant to this study. We then examine the sensitivity of the new definition to the  
130 minimum wave driving threshold. Next, we describe the typical life cycle of wave driving events and examine the evolution  
of the sea level pressure anomalies prior to the events. We continue by describing the occurrence of past wave driving events  
in the observations. We then investigate the probabilistic relationship between the wave driving, the polar vortex winds, and  
the sea level pressure, and we present the seasonality of wave driving events in terms of their frequency and surface  
response. The result section concludes with presenting the spatial sea level pressure response from the various event types.  
Together, our results illustrate that defining polar vortex events solely from information about the preceding wave driving  
135 works surprisingly well and has a number of advantages over the ~~traditional CP07~~ SSW approach. The paper concludes with  
a discussion in Section 4.

## 2 Data and Methodology

Daily observational estimates are derived from the ECMWF reanalysis v5 (ERA5) (Hersbach et al., 2020) over the period  
1979-2020. The reanalysis was downloaded at hourly intervals and a 0.25° resolution, and then averaged to daily values and  
140 interpolated to a 1° grid. Daily simulation data are derived from a nearly 10,000 year-long present-day control run with HI-  
CM2.1 (henceforth: “the model”), the stratospheric resolving version of the coupled climate model CM2.1 from GFDL  
(Delworth et al., 2005). The model has 48 vertical levels (Staten and Reichler, 2014), twice as much as the original CM2.1, [a  
model lid at 0.002 hPa \(ca. 92 km\)](#), and a 144 x 90 global horizontal grid (ca. 2° x 2°). Greenhouse gases, ozone  
concentrations, and other external forcings of the simulation were prescribed at 1990 levels and held constant through time.  
145 The first 1000 years of the simulation are discarded to reduce initial spin-up problems.

We distinguish two types of polar vortex events. The first is SSWs, detected according to the ~~CP07 definition~~ [“WMO criterion”](#)  
(Charlton and Polvani, 2007). An SSW occurs when the daily zonal mean zonal wind at 10 hPa and 60°N  
( $u_{1060}$ ) shifts from westerly to easterly (i.e., the onset or central date  $t_0$ ) between 1 November and 31 March, provided that  
afterwards the vortex returns to westerly for at least 10 consecutive days before 30 April. Multiple SSWs per season must be  
150 separated by at least 20 [consecutive days of westerlies](#). For each SSW, we also determine  $u_{min}$ , the associated minimum  $u_{1060}$   
during the 10-day period after onset,  [\$du\_{min}\$ , the anomaly of  \$u\_{min}\$  with respect to the daily  \$u\_{1060}\$  climatology](#), and  $\sum F'_Z$ , defined  
in the following section.

The second event type is so-called wave-driving events. Their definition is based on the lower stratospheric (100 hPa) wave activity flux, given by daily values of the vertical component  $F_p$  of the quasi-geostrophic Eliassen-Palm (EP) (Eliassen and Palm, 1961) flux. We use the vertical EP-flux component in pressure coordinates (Andrews et al., 1987), which is given, using standard notation, by  $F_p = a \cos \phi f \frac{\bar{v}'\theta''}{\theta_p}$ . We calculate  $F_p$  for all waves, average [using latitude weighting](#) from 20°N to 90°N, and scale by  $-1 \times 10^5 \text{ kg}\cdot\text{m}\cdot\text{s}^{-4}$  to arrive at  $F_z$ . The scaling, denoted as one wave driving unit (1 WDU), nondimensionalizes the flux, creates magnitudes that are close to unity, and ensures that a positive sign means upward propagation. We then normalize  $F_z$  by removing the daily climatology of  $F_z$  (taken from all available years) and dividing by the daily standard deviation (3.17 WDU for ERA5, 3.49 WDU for the model) (Fig. 1) to arrive at  $F'_z$ .

The search for “Positive Wave Driving events” (PWDs) starts each winter on 1 November by setting both the current time index  $t_0$  and the time index of a prior event  $t_{prior}$  to this day. We then advance  $t_0$  at daily intervals and calculate each time the sum of the weighted  $F'_z$  ([daily  \$F'\_z\$  values can be](#) of either sign) between  $t_0$  and  $t_{prior}$ . The weights are a decaying exponential with an e-folding time of  $\tau = 50$  day, so that values closer to  $t_0$  carry more weight than values further away from it. This can be written as

$$\Sigma F'_z = \sum_{t=t_{prior}}^{t_0} \exp\left(\frac{t-t_0}{\tau}\right) F'_z(t).$$

Note that  $\Sigma F'_z$  has units of (stddev · day), or simply (day). The rationale behind the uneven weighting is that the memory of past ~~the~~ wave driving diminishes with time as the vortex tends to relax to climatology. [By experimentation we found that it is important to use a long enough e-folding time  \$\tau\$ ; a shorter  \$\tau\$  selects events that tend to be preceded by stronger negative stratospheric NAM anomalies and followed by weaker surface responses. The  \$\tau = 50\$  day of our study is also similar to previous studies \(Polvani and Waugh, 2004; Newman et al., 2001\).](#)

Using the above definition, a PWD is detected when the accumulated wave driving reaches a certain critical threshold, i.e., when

$$\Sigma F'_z \geq \Sigma F'_{z_{crit}}.$$

As we explain in more detail in section 3.2, in most of our study we use an empirically determined threshold of 12.9 day for the model data and of 12.3 day for the ERA5. ~~To determine the actual onset date of the PWD, we~~ further advance the time index  $t_0$  until the daily  $F'_z(t_0)$  becomes negative. [The  \$t\_0\$  when this happens determines the end of the wave event and the final onset date of the PWD.](#) We then search for additional PWDs by setting  $t_{prior} = t_0$  and repeating the above-described summation. As for SSWs, multiple PWDs in the same winter must be separated by 20 or more days, [but there is no extra requirement for the sign of  \$F'\_z\$  or  \$u\_{1000}\$  during this period.](#) “Negative Wave Driving events” (NWDs) are defined just like PWDs, except that  $\Sigma F'_{z_{crit}}$  is negative and the sign of the inequalities is reversed.

We end the search for wave driving events on 1 June of the next year, which means that PWD onset dates in April or even later are a possibility. In practice, however, PWDs in April are rare, and in the model only two events (0.038 % of all events) were detected at the beginning of May.

185 ~~Similarly to As for~~ SSWs, we determine and save for each event  $u_{min}$ , the minimum  $u_{1060}$  in the  $\pm 10$  day neighborhood of the onset,  $du_{min}$ , the anomaly of  $u_{min}$  with respect to the daily  $u_{1060}$  climatology, and the accumulated wave driving  $\sum F'_Z$  prior to the event. Table 1 lists some of the  $\sum F'_Z$  statistics for SSWs, PWDs, and NWDs. Unsurprisingly, ~~in the mean,~~ SSWs and also ~~all~~ PWDs ~~combined~~ have positive  $\sum F'_Z$  values, but the average  $\sum F'_Z$  for PWDs is larger than that for SSWs. Some SSWs are even preceded by a negative  $\sum F'_Z$ .

190 Since certain SSWs and PWDs mark the same event, we define a common event (COM) as a PWD which has an onset date that is within  $\pm 20$  days of an SSWs. Likewise, exclusive PWDs (EX-PWDs) and exclusive SSWs (EX-SSWs) are events that are either only a PWD or only an SSW.

We use daily surface temperature, precipitation, and sea level pressure (SLP) to describe the surface conditions that follow stratospheric events. Daily time series of the anomalous SLP averaged over the northern Polar Cap ( $\overline{stp}^{PC}$ ) and the North Pacific ( $\overline{stp}^{NP}$ ) are derived from averaging SLP (using latitude weighting) over ( $60^\circ - 90^\circ\text{N}$  and all longitudes) and ( $35^\circ - 60^\circ\text{N}$ ,  $160^\circ\text{E} - 120^\circ\text{W}$ ), respectively. We further calculate  $\overline{stp}^{PC,0-59}$ , the time averaged  $\overline{stp}^{PC}$  from days 0 - 59 after the onset of an event to provide an approximate measure of the integrated strength of the surface impact of an event.

We analyze the downward coupling of vortex events in terms of the standardized northern polar-cap-averaged ( $60^\circ - 90^\circ\text{N}$ ) geopotential height anomalies. The outcome is similar to the empirical-orthogonal-function-based approach of the Northern Annular Mode index (Baldwin and Thompson, 2009). A two-sided Student  $t$ -test at  $p < 0.05$  is used to calculate the statistical significance of composite anomalies and the length of confidence intervals.

A daily Niño 3.4 index is constructed from the anomalous surface air temperature averaged over the Niño 3.4 region ( $5^\circ\text{S} - 5^\circ\text{N}$ ,  $120^\circ - 170^\circ\text{W}$ ). An annual (winter) Niño 3.4 index is then derived from taking a 6-month average of the daily index centered on February 1. The phases of ENSO are identified as follows: when the annual Niño 3.4 index of a particular winter exceeds either the upper or the lower quartile of the distribution of the annual index, an El Niño or La Niña event is defined. The thresholds for the two quartiles are  $\pm 0.50$  K for the ERA5 and  $\pm 0.89$  K for the model, reflecting the model's higher ENSO variability ( $\sigma = 1.3$  K) (Wittenberg et al., 2006) compared to the ERA5 ( $\sigma = 0.7$  K).

Formatted: English (US)

### 3 Results

#### 3.1 Model validation

210 We begin by validating the model against ERA5. Multiple previous studies have already demonstrated that HI-CM2.1 and its  
low-top companion (CM2.1) produce realistic simulations of the troposphere (Reichler and Kim, 2008), stratosphere (Horan  
and Reichler, 2017; Staten and Reichler, 2014; Jucker et al., 2021), and ocean (Gnanadesikan et al., 2006; Wittenberg et al.,  
2006). Here, we investigate two quantities that are important for this study: the zonal-mean zonal wind at 60°N and 10 hPa  
( $u_{1060}$ ) and the upward wave activity flux at 100 hPa ( $F_z$ ). The model simulates their climatological seasonal cycle and their  
215 interannual standard deviation well (Fig. 1a and 1b). The model also captures the reanalysis well in terms of the daily  
distribution of  $\overline{F_z}$  during northern winter (DJFM) (Fig. 1c). As described in the upcoming sections, additional confidence  
into the model's performance is derived from the good agreement between the simulated (58%) and ERA5-derived (62%)  
SSW frequency and the similarity of the SLP response to polar vortex events in the two datasets. Note that in this paper the  
event frequency is given in events per year multiplied by 100 (%).

Formatted: Font color: Auto

Formatted: Font color: Auto

#### 220 3.2 Sensitivity of wave driving events to $\overline{F_z}_{crit}$

We next investigate how sensitive PWDs are to the choice of  $\sum F_z'_{crit}$ , both in terms of the event frequency and the SLP  
response ( $\overline{slp}^{PC,0-59}$ , see Section 2). The red curves in the top panels of Fig. 2 demonstrate that with increasing  $\sum F_z'_{crit}$ , the  
model simulated PWD frequency (left) decreases and the SLP response to PWDs (right) increases. The horizontal black lines  
are the corresponding outcomes for SSWs, i.e., 58% and 1.7 hPa, respectively. In terms of the frequency (Fig. 2a), the curves  
225 for PWDs and SSWs intersect at  $\sum F_z'_{crit} \sim 12.9$  days. Therefore, we focus on this threshold for the rest of this study when  
defining PWDs or NWDs. At this threshold, PWDs create a somewhat stronger SLP response ( $\sim 2.0$  hPa) than SSWs ( $\sim 1.7$   
hPa), and, as can be seen by the shading in Fig. 2b, this difference is statistically significant. We also note that strong some  
EX-PWDs, i.e., polar vortex events with  $\sum F_z' > 16$  WDU but which that are missed by the SSW definition, create on average  
a stronger SLP response than SSWs. Conversely, EX-SSWs, i.e., polar vortex events that are not classified as PWDs, create  
230 a rather weak SLP response. It is further of interest that at  $\sum F_z'_{crit} \sim 12.9$  day, about half of all PWDs are also SSWs (Fig.  
2a). The bottom panels of Fig. 2 demonstrate that, overall, ERA5 lead to fairly similar results as the model. But due to the  
smaller sample size, the results are much noisier and the SLP difference between PDWs and SSWs is not significant.

#### 3.3 Life cycles of stratospheric events

Past studies used the concept of composite-mean life cycles to illustrate the typical temporal evolution of stratospheric  
235 events (e.g., Baldwin and Dunkerton, 2001). Fig. 3 follows this concept and presents life cycles of SSWs, PWDs and SSWs  
NWDs for (left) the ERA5 and (right) the model. Shown are composites for different quantities, each centered on the onset

Formatted: English (US)

date  $t_0$  (day 0) of the events. The following discussion is focused on the results for the model, but we note that the results for the reanalysis are quite similar.

The top of Figs. 3a-b shows the composite evolution of  $F_z'$  at 100 hPa. Both PWDs (red) and SSWs (black) are preceded by pronounced positive wave driving which peaks at about 5-6 WDU, but the wave driving for PWDs is somewhat broader and stronger than for SSWs and starts ~10 days earlier. According to Table 1, PWDs are on average preceded by 39% more accumulated wave driving than SSWs (61 vs. 44 WDU-day). Both PWDs and SSWs are also followed by persistent negative wave driving anomalies, a well-known result (e.g., Hong and Reichler, 2021; Hitchcock and Haynes, 2016). The wave driving for NWDs (blue) is mostly symmetrical but opposite to that of PWDs, but the negative anomalies start somewhat earlier and reach only about -4 WDU at onset.

Figs. 3c-d illustrate the response of the polar vortex in terms of  $u_{1060}$  along with the annual climatological cycle of  $u_{1060}$  centered on the respective onset dates. While SSWs cross the zero-wind line at onset by definition,  $u_{1060}$  for PWDs does not quite reach zero, suggesting that only-not all some-PWDs cross the zero-wind line. From the differences between the continuous lines and the dashed lines for the climatology in Figs. 3c-d one can see that PWDs and SSWs are also associated with somewhat negative  $u_{1060}$  anomalies as early as 50-60 days before onset, hinting at vortex preconditioning prior to the events (Lawrence and Manney, 2020). Consistent with the reduced wave driving after onset, the vortex of both SSWs and PWDs becomes anomalously strong starting ~40 days after onset and remains so for the rest of the winter. As can be seen from the time of the  $u_{1060}$  zero crossing 80-90 days after the onset of SSWs and PWDs, the stronger-than-normal vortex is then associated with final warmings<sup>2</sup> (Black and McDaniel, 2007) that are about 15 days later than climatology, both in the observations (Fig. 3c) and in the model (Fig. 3d) (see also Hu et al., 2014). For NWDs, the vortex first becomes anomalously weak (~5 m/s) starting at ~60 days before onset, then becomes anomalously strong (~15 m/s) due to the reduced wave driving, and it maximizes a few days after onset. Then, the wind anomalies gradually weaken to reach climatology at ~30 days after onset. Afterwards, there is "under-recovery" of the vortex and the FW date of NWDs is also about normal.

Figs. 3e-f show that both SSWs and PWDs are followed by positive  $\overline{\text{tp}}^{PC}$ , corresponding to the negative phase of the North Atlantic Oscillation (NAO) index. The anomalies maximize ~5-10 days after onset and decay almost linearly over a period of 60+ days. It is of note that all-PWDs combined are associated with somewhat stronger and more persistent anomalies than all-SSWs, and that, as mentioned before (Fig. 2b), this difference is statistically significant. We further note that both event types are preceded by strong negative  $\overline{\text{tp}}^{PC}$  anomalies that start as early as ~20 days before the events.

---

<sup>2</sup> Final warmings (FWs) represent the last weakening of the polar vortex at the end of winter when the seasonal increase of radiative heating over the pole prevents the reformation of the vortex.

Formatted: English (US)

NWDs are preceded by significant negative  $\overline{\sigma p}^{PC}$  anomalies starting ca. 50 days before onset, which then briefly turn positive a few days before onset. The  $\overline{\sigma p}^{PC}$  anomalies that follow are mostly opposite to that of PWDs, with long-lasting (> 90 days) and strongly negative values.

To understand the spatial structure behind the preceding SLP anomalies that precede the events, we show in Fig. 4 Northern Hemisphere (NH-) maps of model-simulated anomalous composite mean SLP at 10-day intervals prior to event onset. The composites only include stratospheric events during neutral ENSO years to avoid the teleconnection influences from ENSO.

At lags of -25 and -15 days, the PWD composites show a high-latitude dipole with low pressure over the western hemisphere and high pressure over the eastern hemisphere. The dipole is broadly similar to the tropospheric precursors of vortex weakening events described by Garfinkel et al. (2010) and represents a strengthening of the climatological wavenumber-1 component of geopotential heights. Averaged over the pPolar cap, these anomalies are predominantly negative, explaining the preceding negative  $\overline{\sigma p}^{PC}$  seen in Fig. 3f. Five days before onset, the PWD dipole intensifies and contracts more poleward, with the high over the Euro-Atlantic sector being indicative for blocking (Martius et al., 2009; Barriopedro and Calvo, 2014). At the same time, a north-south dipole emerges over the western North Pacific, somewhat reminiscent of previous observational findings (Cohen and Jones, 2011; Lehtonen and Karpechko, 2016; Dai and Hitchcock, 2021). Five days after onset, the canonical negative NAO pattern develops, largely opposite to the SLP pattern at day -5. This demonstrates the radical changes in that tropospheric high-latitude weather undergoes radical changes from the precursor and downward influence of stratospheric events. The SLP patterns for SSWs are like PWDs, but generally weaker in magnitude.

The situation for NWDs is quite different (Fig. 4, bottom). Starting as early as day -25, NWDs are preceded by pronounced SLP anomalies resembling a positive NAO over the North Atlantic sector. There is also a strongly positive anomaly over the North Pacific, which together with the negative one over Iceland reduces the climatological wavenumber-1 pattern and explains the negative wave driving anomaly seen in Fig. 3b. The composite Nino 3.4 index during NWDs is -0.24 K, suggesting that NWDs are somewhat favored by La Nina-like conditions. Note that only events from neutral ENSO years are included in these composites, but that the Nino 3.4 limits for neutral ENSO are  $\pm 0.89$  K. The weak La Nina conditions help explaining the persistent positive SLP anomalies over the North Pacific that start long before onset.

The ERA5 reanalysis exhibit somewhat similar but much noisier patterns (not shown) due to the small number of events. We also caution that Fig. 4 only offers limited insight, since the figure merges as-possibly different precursor types are merged into one overall mean, making it impossible to distinguish the individual types. More work is needed to resolve this issue and better understand the precursors that lead to stratospheric events.

Going back to Fig. 3, the four-six bottom panels show time-height cross sections of the NAM index of the Northern Annular Mode (NAM) (Baldwin and Dunkerton, 2001). It is quite remarkable that PWDs, which are entirely based on information about the wave driving prior to the events, show a very similar timing and magnitude of the NAM anomalies as SSWs, despite the additional uncertainty of PWDs of how exactly the stratosphere responds to the wave driving. The main



300 difference is that PWDs show a somewhat stronger and more persistent positive-negative surface NAM after onset and a more negative-positive stratospheric NAM ~30 days prior to onset. Note that negative (positive) NAM anomalies correspond to positive (negative) polar-cap-averaged geopotential height anomalies and are therefore shown in Fig. 3 by reddish (blueish) shading. The more negative-positive preceding NAM hints that PWDs are perhaps more closely related to polar night jet oscillations or vacillations (Kuroda and Kodera, 2001; Christiansen, 1999), quasiperiodic oscillations from the delayed mutual influences between wave activity flux and vortex strength (Birner and Albers, 2017) ~~(Butler, 2015 #3274)~~, than SSWs. Another interesting observation is that both SSWs and PWDs are preceded a few days before onset by negative positive NAM anomalies at the surface, which are slightly stronger for SSWs than for PWDs. This is consistent with the different  $\overline{w}^{PC}$  evolutions shown in Fig. 3f and Fig. 4. We also note that the PWD-composites of the NAM from the ERA5 (Fig. 4i) are similar to the high heat flux composites by Polvani and Waugh (2004) ~~Polvani & Waugh (2004)~~ for the NCEP/NCAR reanalysis (their Fig. 4a) and the “dripping paint” composites by Baldwin and Dunkerton (2001) (their Fig. 2). NWDs (Fig. 3l) before onset are characterized by persistent positive NAM anomalies owing to the reduced wave driving long before onset. NWDs are followed by NAM anomalies that are quite similar (but opposite) to that of PWDs, but the magnitude is weaker, and the long persistence (>90 days) of the anomalies is quite remarkable.

### 310 3.4 History of past events

When did wave driving events occur in the real atmosphere, and how do the events compare to SSWs? Fig. 5 answers this by showing the evolution of  $u_{1060}$  along with the timing of SSWs, PWDs, and NWDs (triangles) and their accumulated wave activity fluxes (numbers) in the ERA5. Over the 42-year-long period, we detect 26 SSWs, 26 PWDs, and 26 NWDs. Some events, like January 2019 or February 2018, are both SSWs and PWDs, or so-called common events. Using 20 days as the maximum separation distance between SSWs and PWDs, there were 15 common events. In other words, somewhat more than half of the 26 SSWs were preceded by sufficiently strong lower stratospheric wave activity flux to also classify as PWDs. In the model, we also find that roughly half of all SSWs are also PWDs (Fig. 2a, left-top panel). These numbers are largely consistent with a study by White et al. (2019), which found that 60% of the SSWs in their model are preceded by an extreme wave activity at 100 hPa.

320 On the other hand, eleven SSWs and eleven PWDs in the ERA5 occurred independent from each other, indicating that there exist important differences between some of the two types of events. SSWs, for example, are often-not always preceded by strong lower stratospheric upward propagating wave activity flux (see Fig. 3), but previous work has shown that this flux is not essential to trigger SSWs. Other mechanisms like blocking (Barriopedro and Calvo, 2014) or stratospheric internal dynamics (Scott and Polvani, 2004, 2006; Cámara et al., 2019) can also create SSWs. Previous work has shown that other factors, like stratospheric internal dynamics (Scott and Polvani, 2004, 2006; Cámara et al., 2019), can also create SSWs. In addition, the stratospheric background state also plays a role, for example by altering the propagation of the waves. This was

Field Code Changed

highlighted by Cámara et al. (2017), who found that a strong wave flux at 100 hPa is not sufficient to produce an SSW and that the “right” stratospheric state is also essential. Similar arguments may hold for PWDs.

One important difference between SSWs and PWDs may come from events that occur either very early or very late in winter. In addition, during early or late winter, when the polar vortex is climatologically weaker. In this case, small amounts of wave driving may be sufficient to create SSWs, but this would not produce a PWD. One such example is the late SSW from 1988 (Fig. 5), which occurred on March 13 (day 72), and which was associated with a slightly negative wave driving ( $\Sigma F'_z = -1$  day). Another SSW with a notably weak wave driving was 2008 ( $\Sigma F'_z = 4$  days). Fig. 5 also shows exclusive mid-winter PWDs that were not SSWs, for example during the “decade without SSWs” of the 1990s, or the event from 2016, which was the second strongest PWD ( $\Sigma F'_z = 25$  days) during the ERA5 period. Overall, the strongest PWD was in February 2009 ( $\Sigma F'_z = 27$  days), which was also an SSW. Albers and Birner (2014)

{Albers, 2014 #3325} argued that this event may have been triggered by nonlinear resonant wave amplification (Matthewman and Esler, 2011; Esler and Matthewman, 2011) in the stratosphere, which does not require intense tropospheric wave activity.

In the ERA5, we also find 26 NWDs, events in which sustained amounts of anomalously negative wave driving create a cold and strong polar vortex. Fig. 5 shows that many NWDs occur in close proximity to warm vortex events (e.g., 1981, 1982, 1988, 1995, ...) gives the impression that NWDs tend to either precede or follow warm vortex events, which may be related to the aforementioned oscillatory nature of the stratospheric circulation. However, there also exist isolated NWDs, for example the strong vortex of 2020 described by Lawrence et al. (2020). The overall strongest NWD was in 2011 ( $\Sigma F'_z = -21$  days), followed by 1989 ( $\Sigma F'_z = -20$  days).

### 3.5 Relationships between wave driving, polar vortex perturbation, and surface response

(Cámara et al., 2017), but previous work has shown that this flux is not essential to trigger SSWs. Other mechanisms like blocking (Barriopedro and Calvo, 2014) or stratospheric internal dynamics (Scott and Polvani, 2004, 2006; Cámara et al., 2019) can also create SSWs. Although polar vortex events contribute to prediction skill of subseasonal NH winter climate variations, one difficulty is that not every event affects the troposphere (e.g., Karpechko et al., 2017; Jucker, 2016). The reason is that the state of the troposphere during the events plays a role for the characteristics of the surface response (Domeisen et al., 2020a; Oehrlein et al., 2021). When vortex events are not defined from the perturbation of the vortex (i.e., SSWs) but from the wave driving (i.e., PWDs), an additional complication arises. This is related to the chaotic nature of the atmospheric flow and not exactly knowing how the polar vortex will respond to the preceding wave activity flux, or more precisely, how much of the lower stratospheric wave activity flux converges into the region of the polar vortex. In other

Formatted: Font: Not Bold

words, using the wave driving to define stratospheric events may further increase the already uncertain surface response to polar vortex events.

We use the model data to explore this possibility and present in Fig. 6 the distributions of responses to SSW and PWD events in terms of (a) the perturbation of the polar vortex wind,  $du_{min}$ , and (b) the polar-cap-averaged SLP anomaly over the 0-59 day period following the events. Fig. 6a illustrates that during SSWs (black), the polar vortex decelerates on average by ~31 m/s, with a range of outcomes from ~4 m/s to ~70 m/s. Overall, the situation for PWDs (red) is quite similar, indicating that the above-mentioned uncertainty from not knowing how the vortex will respond to the wave driving is small. Closer inspection shows that the mean vortex deceleration during PWDs amounts to ~29 m/s, somewhat smaller than for SSWs. In addition, there exist some PWDs with a positive vortex perturbation  $du_{min}$ , but the number of these events is very small.

For practical purposes, the response at the surface is more important than the perturbation of the vortex. Histograms of the surface response ( $\overline{\delta p}^{PC,0-59}$ ) to the same SSWs and PWDs as in the left panel are shown in Fig. 6b. There is a wide range of responses, from minus 10 hPa to plus 12 hPa, clearly demonstrating how uncertain the surface response to stratospheric events can be. Overall, the two distributions are again very similar. As expected, both are shifted towards positive SLP anomalies, corresponding to the negative phase of the NAO. Compared to SSWs, PWDs create on average a somewhat stronger mean response (2.0 hPa vs. 1.7 hPa), reduced response spread (3.5 vs. 3.6 hPa), and reduced chance of a negative  $\overline{\delta p}^{PC,0-59}$  (29% vs. 32%).

These results suggest that the response of the polar vortex to the wave driving is not much more variable than the response of the vortex to SSWs (Fig. 6a), and this does not affect much the surface response (Fig. 6b). The main uncertainty of the surface response stems from the downward migration of the stratospheric signal in the presence of strong tropospheric weather noise, and PWDs and SSWs behave in this respect very similarly. As already seen before (Figs. 2b and 3f), there is indication that PWDs create a somewhat more robust surface response than SSWs, which is consistent with other previous studies that preceding strong upward propagating wave activity is an early indicator for downward propagating SSWs (Karpechko et al., 2017; White et al., 2019).

### 3.6 Seasonality of event frequency and surface response

Next, we explore in Fig. 7 several aspects of event seasonality. As before, this analysis does not include data from the reanalysis as there are too few observed events. Fig. 7a shows how the different event types are distributed over the various months. We first note that, compared to PWDs (red) and NWDs (blue), SSWs (black) exhibit a much narrower distribution which peaks in February. The February peak is not entirely consistent with the observed SSWs which maximize in January (Butchart et al., 2011), but we caution that the number of observed events is too small for such a conclusion (Horan and Reichler, 2017).

Fig. 7a shows additional event types. Most notably, exclusive SSWs (EX-SSWs), SSWs associated with a rather small wave driving ( $< \bar{F}'_{Z_{CRIT}}$ ), are most common in March. This is a time when the vortex is weak and even small amounts of wave driving are able to reverse the vortex. Exclusive PWDs (EX-PWDs) are broken down into events in which the polar vortex does (U-) and does not (U+) cross the zero-wind threshold. U- events are most common in March and April, a timing that suggests that many of the events are final warmings (FWs) (Black and Medaniel, 2007). Some of the April U- events are associated with a complete vortex recovery (not shown), but these events are not SSWs since they are not permitted by the CP07 definition. U+ events, on the other hand, maximize in December and January, when the vortex is strong and requires considerable forcing to break it down. Since the vortex does not reverse in this case, U+ events are comparable to classical mid-winter minor warmings.

The following panels of Fig. 7 are concerned with the strength and seasonality of the surface response. As before, the response is measured in terms of  $\bar{\sigma}^{PC,0-59}$ . Fig. 7b goes back to a question raised before, i.e., how many vortex events are “downward propagating”. In Fig. 7b this is answered in terms of the percentage of events followed by the expected sign of the polar-cap-averaged SLP anomaly, i.e., positive for SSWs and PWDs and negative for NWDs. The numbers next to the event labels show the outcomes averaged over all months. 71% of all PWDs are followed by the expected positive  $\bar{\sigma}^{PC,0-59}$ , with similar numbers for SSWs and NWDs. This outcome is close to what White et al. (2019) found in their model, that ~67% of SSWs that were preceded by extreme lower-tropospheric wave activity were downward propagating in the sense of Karpechko et al. (2017). Of note is the strong decline of the expected response to SSWs towards late winter, which closes in at the critical 50% mark. These late SSWs are frequent (Fig. 7a) but associated with weak surface responses. The likely reason is that dynamically these events are not very active; the climatological vortex is weak during this time of the year and small amounts of wave activity suffice to trigger the SSW criterion. On the other hand, most of the PWDs during this late time of the year show the expected surface response, since by definition they are always associated with a large wave flux activity.

Figs. 7c-d present the average surface response ( $\bar{\sigma}^{PC,0-59}$ ) by the time of the year. As in Fig. 7b, the SSW response varies strongly by month: it maximizes at 2-3 hPa in mid-winter and declines towards the end of winter. In contrast, the response to PWDs is more moderate (~1-2 hPa) during most months.

EX-SSWs are of particular interest because they are missed by the PWD definition. EX-SSWs during early- and mid-winter create sizeable responses (Fig. 7d) but are not very frequent (Fig. 7a). They are more common during February and March (Fig. 7a) but then their surface response is weak (Fig. 7d). EX-PWDs, on the other hand, have two distinct frequency peaks (Fig. 7a), one from (1) U+ events in mid-winter and another one from (2) U- events in late-winter, both of which create sizeable surface responses (Fig. 7d). Overall, this suggests that PWDs that are missed by the SSW definition (EX-PWDs) are

420 more relevant for the surface than SSWs that are missed by the PWD definition (EX-SSWs). Fig. 7e further illustrates this by  
showing the frequency weighted SLP responses to EX-PWDs and EX-SSWs. The area under each curve is a measure for the  
overall relevance of the events. Only in February are EX-SSWs more relevant than EX-PWDs, mostly because EX-SSWs  
during this time are so frequent.

### 3.7 SLP response patterns

425 We conclude our study by examining the surface response that follows the various stratospheric events in terms of the spatial  
SLP pattern (Fig. 8). ~~Note that Fig. 8 as most of our figures (except Fig. 4) show results for all years, and not just from~~  
~~ENSO-neutral years.~~ As expected, PWDs and SSWs are all associated with a negative phase of the NAO, i.e., higher  
pressure over the polar cap and lower pressure over the North Atlantic-European sector. ~~NWDs create an SLP response that~~  
~~is roughly inverse to that of PWDs.~~ In addition, PWDs ~~and also SSWs to some extent~~ are associated with negative anomalies  
430 over the North Pacific. ~~This is likely~~ related to the teleconnection influence from the El Niño Southern Oscillation (ENSO)  
on the climatological Aleutian Low (Horel and Wallace, 1981). The deepening of the low intensifies the planetary wave #1  
activity, ~~and thus provides some of the wave forcing needed for PWDs, and overall increases the likelihood for frequency of~~  
polar vortex events (Garfinkel and Hartmann, 2008).

~~The SLP response to NWDs is roughly inverse to that of PWDs, except that the North Pacific SLP anomalies of NWDs are~~  
~~stronger (i.e., +3 hPa vs. -2 hPa). Perhaps, remote forcing from ENSO plays a more important role for NWDs than for~~  
435 ~~PWDs. This interpretation is supported by the composite Niño 3.4 index of -0.80 K during NWDs and +0.63 K during~~  
~~PWDs. In contrast, the composite Niño 3.4 index during SSWs is only +0.05 K, indicating that in our model ENSO plays~~  
~~almost no role for SSWs. In a separate upcoming paper, we plan to better~~ ~~We intend to better understand and describe the~~  
role of ENSO in influencing polar vortex events and their ~~surface response~~ SLP patterns in a separate upcoming paper.

440 Here, we are mostly interested in the differences between SSWs and PWDs and therefore focus on events that are mutually  
exclusive from each other, i.e., EX-SSWs and EX-PWDs. Fig. 8 shows EX-PWDs separately for U+ and U- events. In the  
model, about half of all SSWs and also half of all PWDs are exclusive events. As mentioned before, EX-SSWs are followed  
by a quite modest SLP response, weaker than that to U+ or U- events. U+ events are associated with particularly negative  
SLP anomalies over the North Pacific, presumably because of a strong ENSO influence on these events. U- events are not  
very frequent, but they create robust positive SLP anomalies over the Polar Cap. U- events occur on average on March 20,  
445 much earlier than the model's mean FW date of April 10 (Fig. 1a). U- events can therefore be seen as early but impactful  
~~“dynamical”~~ FWs, which occur during a time when the climatological vortex still requires a substantial wave forcing to  
break it down. ~~These FWs should be distinguished from “radiative” FWs, which are simply due to the seasonal increase of~~  
~~the radiative heating over the pole.~~ Furthermore, U- events are preceded by an anomalously strong vortex 1-2 months before  
onset (not shown), which is consistent with Hu et al. (2014) who showed that winters with a strong polar vortex tend to be  
450 followed by early FWs.

Fig. 8 also presents the SLP patterns of SSWs and PWDs from ERA5, which are generally similar to but noisier than that from the model. Figs. A1 and A2 show additional maps like Fig. 8 but for 2m temperature and precipitation, respectively.

#### 4 Summary and conclusion

The results from this paper challenge the general belief that ~~the reversal of the polar vortex associated with major sudden~~ stratospheric ~~sudden~~-warming events (SSWs) ~~are-is the most important key physical element source for the creation of~~ stratospheric signals at the surface. Building upon earlier work by Polvani and Waugh (2004), and using a long control run with a stratosphere-resolving coupled climate model, we showed that the accumulated upward-directed lower stratospheric wave activity flux is a more effective indicator for major polar vortex perturbations than SSWs. We used the wave activity flux to define so-called positive wave driving events (PWDs), which ~~by construction~~ had the same occurrence frequency as  
460 SSWs. Much of the study was then about understanding the similarities and differences between PWDs and SSWs. About half of all PWDs occurred at the same time as SSWs, and just like SSWs, PWDs were ~~preceded by increased amounts of wave activity flux,~~ followed by abrupt decelerations of the polar vortex and long-lasting negative anomalies of the North Atlantic Oscillation index at the surface.

However, half of all PWDs did not concur with ~~major~~ SSWs, pointing to important differences between PWDs and SSWs.  
465 For example, ~~since our definition of PWDs also permits dynamical final warmings and SSW-like events in April,~~ PWDs were more evenly distributed over the winter than SSWs. ~~and There was also the indication that PWDs were are~~ more sensitive to the influences from ENSO than SSWs. Perhaps most importantly, PWDs tended to be followed by stronger surface responses than SSWs, and this had two principal reasons. First, the PWD definition excluded many of the weak SSWs in late winter, associated with relatively small wave activity fluxes and surface responses. Second, the PWD definition  
470 included mid-winter polar vortex events, which formally did not fulfill the SSW definition, but which were associated with strong wave activity fluxes and robust surface signals. Apparently, the reversal of the polar vortex is a less important criterion for creating downward propagating signals than the strength of the wave activity flux and the relative perturbation of the polar vortex. This interpretation is consistent with earlier findings that strong upward wave activity fluxes are a good indicator for a downward propagating response of SSWs (Karpechko et al., 2017; White et al., 2019).

Besides ~~being a valuable measure for stratosphere-troposphere coupling and identifying events with a robust surface impact a more robust surface response,~~ there are more advantages to the PWD definition. For example, PWDs

- capture with one ~~simple~~-criterion a variety of event types, including major warmings, minor warmings, final warmings (FWs), and also strong vortex events;
- detect strong SSWs and ~~also dynamical~~ FWs, but avoid weak events that have little surface impact; and
- ~~may~~ lengthen the forecast horizon for polar vortex events because the wave activity flux precedes the onset of events ~~by several weeks.~~

Formatted: English (US)

485 On the other hand, there are also disadvantages to the PWD definition. First, it requires knowledge of EP-fluxes, which are more complicated to calculate than the simple zonal mean zonal wind for SSWs. In addition, EP-fluxes are often unavailable from models, highlighting the need to make these and other dynamical variables publicly available to projects like DynVarMIP (Gerber and Manzini, 2016). Lastly, for certain applications, it may be a disadvantage that PWDs do not distinguish between different event types. However, some of this information can be easily added, as done in this study for U- and U+ events.

490 We also considered the ERA5 reanalysis in this study. Despite the limitation from the small number of observed events, we found similar outcomes from the ERA5 as for the model. We also underline that our model has a quite realistic circulation, which gives us confidence that our model results are indeed applicable to the real world.

495 For a better comparison with SSWs, we used a fixed PWD wave driving threshold. However, for practical applications there is no need for specific thresholds. On the contrary, every event is associated with a different amount of wave driving, allowing for a spectrum of events with different magnitudes, similar to the classification of other extreme events like hurricanes or tornadoes. To illustrate this, we calculated from the ERA5 the occurrence of PWDs and NWDs with an absolute accumulated wave driving of at least 5 WDU-day. As shown in Fig. 9, at this reduced threshold, there occurred several wave driving events per year of either sign, and the events are followed by consistent perturbations of the polar vortex winds. These perturbations are not always strong, but they may still create useful surface signals for S2S predictions.

500 While this study was only concerned with vortex events over the Arctic, the wave driving definition can also be used to detect vortex events over the Antarctic. There, ~~traditional~~-SSWs are extremely rare and seasonally phase-locked towards the end of winter (Jucker et al., 2021; Wang et al., 2020), creating the need for a more practical definition with more frequent events. The problem is that the polar vortex over the Southern Hemisphere (SH) is stronger than over the NH, making it more difficult for the SH vortex to reverse its direction despite the occasional occurrence of strong wave forcings and vortex responses. The research community has already started to test some alternate definitions for SH vortex events (Thompson et al., 2005; Lim et al., 2019; Jucker et al., 2021), and it is up to future research to compare these and other definitions against 505 the wave driving approach taken in the present study.

## 5 Appendix

### 6 Author contribution

TR designed the study, performed the model simulation, analysed the data, and wrote the manuscript. MJ was involved in the scientific interpretation of the results, the design of the research questions, and the review of the manuscript.

## 510 7 Competing interests

The authors declare that they have no conflict of interest.

## 8 Acknowledgements

We thank the U.S. National Science Foundation (NSF) and the Australian Research Council (ARC) for their support. We thank ECMWF and the Research Data Archive at NCAR/CISL for providing the ERA5 data. The coupled model simulation  
515 for this study was a major effort and required several years to run at the Center for High Performance Computing (CHPC) of the University of Utah. We gratefully acknowledge CHPC for its support. We thank Darryn Waugh for his helpful comments on an earlier version of this manuscript. We also thank Amy Butler and another anonymous reviewer for their thoughtful comments.

## 9 Financial Support

520 TR was supported by NSF under award number 1446292 and 2103013. MJ was supported by ARC under grant FL150100035.

## 10 References

- Albers, J. R. and Birner, T.: Vortex Preconditioning due to Planetary and Gravity Waves prior to Sudden Stratospheric Warmings, *Journal of the Atmospheric Sciences*, 71, 4028-4054, 10.1175/jas-d-14-0026.1, 2014.
- 525 Andrews, D. G., Holton, J. R., and Leovy, C. B.: *Middle Atmosphere Dynamics*, Academic Press, Orlando, Florida 1987.
- Baldwin, M. P. and Dunkerton, T. J.: Stratospheric harbingers of anomalous weather regimes, *Science*, 294, 581-584, 2001.
- Baldwin, M. P. and Thompson, D. W. J.: A simplified annular mode index based on zonal-mean data, *Quarterly Journal of the Royal Meteorological Society*, (submitted), 2009.
- 530 Baldwin, M. P., Thompson, D. W. J., Shuckburgh, E. F., Norton, W. A., and Gillett, N. P.: Weather from the Stratosphere?, *Science*, 301, 317-319, 2003.
- Baldwin, M. P., Ayarzagüena, B., Birner, T., Butchart, N., Butler, A. H., Charlton-Perez, A. J., Domeisen, D. I. V., Garfinkel, C. I., Garny, H., Gerber, E. P., Hegglin, M. I., Langematz, U., and Pedatella, N. M.: Sudden Stratospheric Warmings, *Rev Geophys*, 59, e2020RG000708, <https://doi.org/10.1029/2020RG000708>, 2021.
- 535 Barriopedro, D. and Calvo, N.: On the Relationship between ENSO, Stratospheric Sudden Warmings, and Blocking, *Journal of Climate*, 27, 4704-4720, 2014.
- Birner, T. and Albers, J. R.: Sudden stratospheric warmings and anomalous upward wave activity flux, *SOLA*, 13A, , 8–12, doi:10.2151/sola.13A-002, 2017.
- Black, R. X. and McDaniel, B. A.: The Dynamics of Northern Hemisphere Stratospheric Final Warming Events, *Journal of the Atmospheric Sciences*, 64, 2932-2946, 10.1175/jas3981.1, 2007.
- 540 Butchart, N., Charlton-Perez, A. J., Cionni, I., Hardiman, S. C., Haynes, P. H., Krüger, K., Kushner, P. J., Newman, P. A., Osprey, S. M., Perlwitz, J., Sigmond, M., Wang, L., Akiyoshi, H., Austin, J., Bekki, S., Baumgaertner, A., Braesicke, P., Brühl, C., Chipperfield, M.,

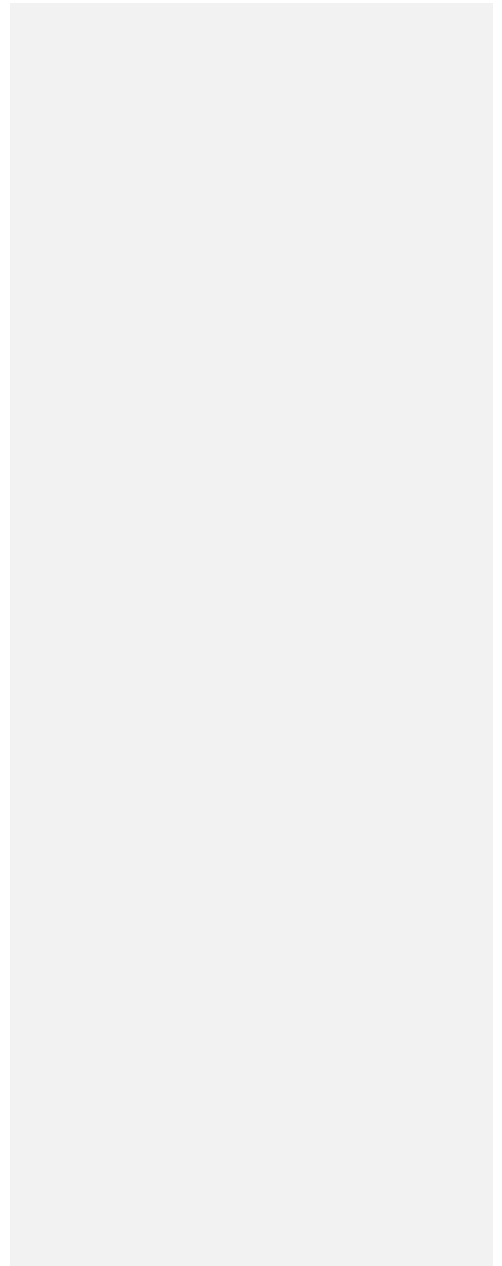


- Dameris, M., Dhomse, S., Eyring, V., Garcia, R., Garny, H., Jöckel, P., Lamarque, J.-F., Marchand, M., Michou, M., Morgenstern, O., Nakamura, T., Pawson, S., Plummer, D., Pyle, J., Rozanov, E., Scinocca, J., Shepherd, T. G., Shibata, K., Smale, D., Teyssède, H., Tian, W., Waugh, D., and Yamashita, Y.: Multimodel climate and variability of the stratosphere, *Journal of Geophysical Research: Atmospheres*, 116, 10.1029/2010jd014995, 2011.
- 545 Butler, A. H., Seidel, D. J., Hardiman, S. C., Butchart, N., Birner, T., and Match, A.: Defining Sudden Stratospheric Warmings, *Bulletin of the American Meteorological Society*, 96, 1913-1928, 10.1175/bams-d-13-00173.1, 2015.
- Cámara, A. d. I., Birner, T., and Albers, J. R.: Are Sudden Stratospheric Warmings Preceded by Anomalous Tropospheric Wave Activity?, *Journal of Climate*, 32, 7173-7189, 10.1175/jcli-d-19-0269.1, 2019.
- 550 Cámara, A. d. I., Albers, J. R., Birner, T., Garcia, R. R., Hitchcock, P., Kinnison, D. E., and Smith, A. K.: Sensitivity of Sudden Stratospheric Warmings to Previous Stratospheric Conditions, *Journal of the Atmospheric Sciences*, 74, 2857-2877, 10.1175/jas-d-17-0136.1, 2017.
- Charlton, A. J. and Polvani, L. M.: A New Look at Stratospheric Sudden Warmings. Part I: Climatology and Modeling Benchmarks, *Journal of Climate*, 20, 449-469, 10.1175/jcli3996.1, 2007.
- 555 Charney, J. G. and Drazin, P. G.: Propagation of planetary-scale disturbances from the lower into the upper atmosphere, *J Geophys Res*, 66, 83-109, 1961.
- Chen, P. and Robinson, W. A.: Propagation of Planetary Waves between the Troposphere and Stratosphere, *Journal of the Atmospheric Sciences*, 49, 2533-2545, 1992.
- Christiansen, B.: Stratospheric Vacillations in a General Circulation Model, *Journal of the Atmospheric Sciences*, 56, 1858-1872, 10.1175/1520-0469(1999)056<1858:SVIAGC>2.0.CO;2, 1999.
- 560 Cohen, J. and Jones, J.: Tropospheric Precursors and Stratospheric Warmings, *Journal of Climate*, 24, 6562-6572, 2011.
- Dai, Y. and Hitchcock, P.: Understanding the Basin Asymmetry in Surface Response to Sudden Stratospheric Warmings from an Ocean?Atmosphere Coupled Perspective, *Journal of Climate*, 34, 8683-8698, 10.1175/jcli-d-21-0314.1, 2021.
- Delworth, T. D., Broccoli, A. J., Rosati, A., and Stouffer, R. J.: GFDL's CM2 global coupled climate models Part I: Formulation and simulation characteristics, *Journal of Climate*, (submitted), 2005.
- 565 Domeisen, D. I. V., Grams, C. M., and Papritz, L.: The role of North Atlantic–European weather regimes in the surface impact of sudden stratospheric warming events, *Weather Clim. Dynam.*, 1, 373-388, 10.5194/wcd-1-373-2020, 2020a.
- Domeisen, D. I. V., Butler, A. H., Charlton-Perez, A. J., Ayarzagüena, B., Baldwin, M. P., Dunn-Sigouin, E., Furtado, J. C., Garfinkel, C. I., Hitchcock, P., Karpechko, A. Y., Kim, H., Knight, J., Lang, A. L., Lim, E.-P., Marshall, A., Roff, G., Schwartz, C., Simpson, I. R., Son, S.-W., and Taguchi, M.: The Role of the Stratosphere in Subseasonal to Seasonal Prediction: 1. Predictability of the Stratosphere, *Journal of Geophysical Research: Atmospheres*, 125, e2019JD030920, <https://doi.org/10.1029/2019JD030920>, 2020b.
- 570 Domeisen, D. I. V., Butler, A. H., Charlton-Perez, A. J., Ayarzagüena, B., Baldwin, M. P., Dunn-Sigouin, E., Furtado, J. C., Garfinkel, C. I., Hitchcock, P., Karpechko, A. Y., Kim, H., Knight, J., Lang, A. L., Lim, E.-P., Marshall, A., Roff, G., Schwartz, C., Simpson, I. R., Son, S.-W., and Taguchi, M.: The Role of the Stratosphere in Subseasonal to Seasonal Prediction: 2. Predictability Arising From Stratosphere-Troposphere Coupling, *Journal of Geophysical Research: Atmospheres*, 125, e2019JD030923, <https://doi.org/10.1029/2019JD030923>, 2020c.
- 575 Eliassen, A. and Palm, E.: On the transfer of energy in stationary mountain waves, *Geophys. Publ.*, 22, 1-23, 1961.
- Esler, J. G. and Matthewman, N. J.: Stratospheric Sudden Warmings as Self-Tuning Resonances. Part II: Vortex Displacement Events, *Journal of the Atmospheric Sciences*, 68, 2505-2523, 10.1175/jas-d-11-08.1, 2011.
- 580 Garfinkel, C. I. and Hartmann, D. L.: Different ENSO teleconnections and their effects on the stratospheric polar vortex, *Journal of Geophysical Research: Atmospheres*, 113, D18114, 10.1029/2008JD009920, 2008.
- Garfinkel, C. I., Hartmann, D. L., and Sassi, F.: Tropospheric Precursors of Anomalous Northern Hemisphere Stratospheric Polar Vortices, *Journal of Climate*, 23, 3282-3299, 10.1175/2010JCLI3010.1, 2010.
- 585 Gerber, E. P. and Manzini, E.: The Dynamics and Variability Model Intercomparison Project (DynVarMIP) for CMIP6: assessing the stratosphere–troposphere system, *Geosci. Model Dev.*, 9, 3413-3425, 10.5194/gmd-9-3413-2016, 2016.

- Gnanadesikan, A., Dixon, K. W., Griffies, S. M., Balaji, V., Barreiro, M., Beesley, J. A., Cooke, W. F., Delworth, T. L., Gerdes, R., Harrison, M. J., Held, I. M., Hurlin, W. J., Lee, H.-C., Liang, Z., Nong, G., Pacanowski, R. C., Rosati, A., Russell, J., Samuels, B. L., Song, Q., Spelman, M. J., Stouffer, R. J., Sweeney, C. O., Vecchi, G., Winton, M., Wittenberg, A. T., Zeng, F., Zhang, R., and Dunne, J. P.: GFDL's CM2 Global Coupled Climate Models. Part II: The Baseline Ocean Simulation, *Journal of Climate*, 19, 675-697, 10.1175/jcli3630.1, 2006.
- 590 Hersbach, H., Bell, B., Berrisford, P., Hirahara, S., Horányi, A., Muñoz-Sabater, J., Nicolas, J., Peubey, C., Radu, R., Schepers, D., Simmons, A., Soci, C., Abdalla, S., Abellan, X., Balsamo, G., Bechtold, P., Biavati, G., Bidlot, J., Bonavita, M., De Chiara, G., Dahlgren, P., Dee, D., Diamantakis, M., Dragani, R., Flemming, J., Forbes, R., Fuentes, M., Geer, A., Haimberger, L., Healy, S., Hogan, R. J., Hólm, E., Janisková, M., Keeley, S., Laloyaux, P., Lopez, P., Lupu, C., Radnoti, G., de Rosnay, P., Rozum, I., Vamborg, F., Villaume, S., and Thépaut, J.-N.: The ERA5 global reanalysis, *Quarterly Journal of the Royal Meteorological Society*, 146, 1999-2049, 10.1002/qj.3803, 2020.
- Hitchcock, P. and Haynes, P. H.: Stratospheric control of planetary waves, *Geophysical Research Letters*, 43, 11,884-811,892, <https://doi.org/10.1002/2016GL071372>, 2016.
- Holton, J. R. and Mass, C.: Stratospheric vacillation cycles, *Journal of the Atmospheric Sciences*, 33, 2218–2225, 1976.
- 600 Hong, H. J. and Reichler, T.: Local and Remote Response of Ozone to Arctic Stratospheric Circulation Extremes, *Atmos. Chem. Phys.*, 21, 1159-1171, 10.5194/acp-2020-790, 2021.
- Horan, M. F. and Reichler, T.: Modeling seasonal sudden stratospheric warming climatology based on polar vortex statistics, *Journal of Climate*, 30, 10101-10116, 10.1175/jcli-d-17-0257.1, 2017.
- 605 Horel, J. D. and Wallace, J. M.: Planetary-Scale Atmospheric Phenomena Associated with the Southern Oscillation, *Monthly Weather Review*, 109, 813-829, 1981.
- Hu, J., Ren, R., and Xu, H.: Occurrence of Winter Stratospheric Sudden Warming Events and the Seasonal Timing of Spring Stratospheric Final Warming, *J Atmos Sci*, 71, 2319-2334, 2014.
- Jucker, M.: Are Sudden Stratospheric Warmings Generic? Insights from an Idealized GCM, *Journal of the Atmospheric Sciences*, 73, 5061-5080, 10.1175/jas-d-15-0353.1, 2016.
- 610 Jucker, M. and Reichler, T.: Dynamical precursors for statistical prediction of stratospheric sudden warming events, *Geophys Res Lett*, 45, doi: 10.1029/2018GL080691 2018.
- Jucker, M., Reichler, T., and Waugh, D. W.: How Frequent Are Antarctic Sudden Stratospheric Warmings in Present and Future Climate?, *Geophysical Research Letters*, 48, 1-9, <https://doi.org/10.1029/2021GL093215>, 2021.
- Karpechko, A. Y. and Manzini, E.: Arctic Stratosphere Dynamical Response to Global Warming, *Journal of Climate*, 30, 7071-7086, 10.1175/jcli-d-16-0781.1, 2017.
- 615 Karpechko, A. Y., Hitchcock, P., Peters, D. H. W., and Schneider, A.: Predictability of downward propagation of major sudden stratospheric warmings, *Quarterly Journal of the Royal Meteorological Society*, 143, 1459-1470, 10.1002/qj.3017, 2017.
- Kidston, J., Scaife, A. A., Hardiman, S. C., Mitchell, D. M., Butchart, N., Baldwin, M. P., and Gray, L. J.: Stratospheric influence on tropospheric jet streams, storm tracks and surface weather, *Nature Geosci*, 8, 433-440, 10.1038/ngeo2424, 2015.
- 620 Kim, J., Son, S.-W., Gerber, E. P., and Park, H.-S.: Defining Sudden Stratospheric Warming in Climate Models: Accounting for Biases in Model Climatologies, *Journal of Climate*, 30, 5529-5546, 10.1175/jcli-d-16-0465.1, 2017.
- Kuroda, Y. and Kodera, K.: Variability of the polar night jet in the northern and southern hemispheres, *Journal of Geophysical Research: Atmospheres*, 106, 20703-20713, doi:10.1029/2001JD900226, 2001.
- 625 Labitzke, K.: Stratospheric-mesospheric midwinter disturbances: A summary of observed characteristics, *Journal of Geophysical Research: Oceans*, 86, 9665-9678, 10.1029/JC086iC10p09665, 1981.
- Lawrence, Z. D. and Manney, G. L.: Does the Arctic Stratospheric Polar Vortex Exhibit Signs of Preconditioning Prior to Sudden Stratospheric Warmings?, *Journal of the Atmospheric Sciences*, 77, 611-632, 2020.
- Lawrence, Z. D., Perlwitz, J., Butler, A. H., Manney, G. L., Newman, P. A., Lee, S. H., and Nash, E. R.: The Remarkably Strong Arctic Stratospheric Polar Vortex of Winter 2020: Links to Record-Breaking Arctic Oscillation and Ozone Loss, *Journal of Geophysical Research: Atmospheres*, 125, e2020JD033271, <https://doi.org/10.1029/2020JD033271>, 2020.
- 630

- Lehtonen, I. and Karpechko, A. Y.: Observed and modeled tropospheric cold anomalies associated with sudden stratospheric warmings, *Journal of Geophysical Research: Atmospheres*, 121, 1591-1610, <https://doi.org/10.1002/2015JD023860>, 2016.
- Lim, E.-P., Hendon, H. H., Boschat, G., Hudson, D., Thompson, D. W. J., Dowdy, A. J., and Arblaster, J. M.: Australian hot and dry extremes induced by weakenings of the stratospheric polar vortex, *Nature Geoscience*, 10.1038/s41561-019-0456-x, 2019.
- 635 Limpasuvan, V., Hartmann, D. L., Thompson, D. W. J., Jeev, K., and Yung, Y. L.: Stratosphere-troposphere evolution during polar vortex intensification, *Journal of Geophysical Research: Atmospheres*, 110, 10.1029/2005JD006302, 2005.
- Martius, O., Polvani, L. M., and Davies, H. C.: Blocking precursors to stratospheric sudden warming events, *Geophysical Research Letters*, 36, L14806, 10.1029/2009GL038776, 2009.
- Matsuno, T.: A dynamical model of the stratospheric sudden warming, *Journal of the Atmospheric Sciences*, 28, 1479-1494, 1971.
- 640 Matthewman, N. J. and Esler, J. G.: Stratospheric Sudden Warmings as Self-Tuning Resonances. Part I: Vortex Splitting Events, *Journal of the Atmospheric Sciences*, 68, 2481-2504, 10.1175/jas-d-11-07.1, 2011.
- McLandress, C. and Shepherd, T. G.: Impact of Climate Change on Stratospheric Sudden Warmings as Simulated by the Canadian Middle Atmosphere Model, *Journal of Climate*, 22, 5449-5463, 10.1175/2009JCLI3069.1, 2009.
- Newman, P. A. and Nash, E. R.: Quantifying the wave driving of the stratosphere, *Journal of Geophysical Research: Atmospheres*, 105, 12485-12497, <https://doi.org/10.1029/1999JD901191>, 2000.
- Newman, P. A., Nash, E. R., and Rosenfield, J. E.: What controls the temperature of the Arctic stratosphere during the spring?, *J. Geophys. Res.*, 106, 19999-20010, 19910.11029/12000JD000061, 2001.
- Oehrlein, J., Polvani, L. M., Sun, L., and Deser, C.: How Well Do We Know the Surface Impact of Sudden Stratospheric Warmings?, *Geophysical Research Letters*, 48, e2021GL095493, <https://doi.org/10.1029/2021GL095493>, 2021.
- 650 Palmeiro, F. M., Barriopedro, D., García-Herrera, R., and Calvo, N.: Comparing Sudden Stratospheric Warming Definitions in Reanalysis Data, *Journal of Climate*, 28, 6823-6840, 10.1175/jcli-d-15-0004.1, 2015.
- Polvani, L. M. and Waugh, D. W.: Upward wave activity flux as precursor to extreme stratospheric events and subsequent anomalous surface weather regimes, *Journal of Climate*, 17, 3548-3554, 2004.
- Randel, W. J., Wu, F., and Stolarski, R.: Changes in column ozone correlated with EP flux, *J. Meteor. Soc. Jpn.*, 80, 2002.
- 655 Reichler, T. and Kim, J.: How Well Do Coupled Models Simulate Today's Climate?, *Bulletin of the American Meteorological Society*, 89, 303-312, 10.1175/bams-89-3-303, 2008.
- Reichler, T., Kushner, P. J., and Polvani, L. M.: The coupled stratosphere-troposphere response to impulsive forcing from the troposphere, *Journal of the Atmospheric Sciences*, 62, 3337-3352, 2005.
- Scaife, A. A., Baldwin, M. P., Butler, A. H., Charlton-Perez, A. J., Domeisen, D. I. V., Garfinkel, C. I., Hardiman, S. C., Haynes, P., Karpechko, A. Y., Lim, E. P., Noguchi, S., Perlwitz, J., Polvani, L., Richter, J. H., Scinocca, J., Sigmond, M., Shepherd, T. G., Son, S. W., and Thompson, D. W. J.: Long Range Prediction and the Stratosphere, *Atmos. Chem. Phys. Discuss.*, 2021, 1-30, 10.5194/acp-2021-719, 2021.
- Scherhag, R.: Die explosionsartigen Stratosphären- erwärmungen des Spätwinter 1951/1952 (The explosive warmings in the stratosphere of the late winter 1951/1952). *Ber. Dtsch. Wetterdienstes U.S. Zone*, 38, 51-63, 1952.
- 665 Scott, R. K. and Polvani, L. M.: Stratospheric control of upward wave flux near the tropopause, *Geophysical Research Letters*, 31, L02115 02111-02114, 2004.
- Scott, R. K. and Polvani, L. M.: Internal variability of the winter stratosphere. Part I: Time-independent forcing, *Journal of the Atmospheric Sciences*, 63, 2758-2776, 2006.
- Sigmond, M., Scinocca, J. F., Kharin, V. V., and Shepherd, T. G.: Enhanced seasonal forecast skill following stratospheric sudden warmings, *Nature Geoscience*, 6, 98-102, 2013.
- 670 Sjöberg, J. P. and Birner, T.: Transient Tropospheric Forcing of Sudden Stratospheric Warmings, *Journal of the Atmospheric Sciences*, 69, 3420-3432, 10.1175/jas-d-11-0195.1, 2012.

- Staten, P. W. and Reichler, T.: On the ratio between shifts in the eddy-driven jet and the Hadley cell edge, *Climate Dynamics*, 42, 1229-1242, 2014.
- 675 Thompson, D. W. J., Baldwin, M. P., and Solomon, S.: Stratosphere-Troposphere Coupling in the Southern Hemisphere, *Journal of the Atmospheric Sciences*, 62, 708-715, 10.1175/jas-3321.1, 2005.
- Wang, L., Hardiman, S. C., Bett, P. E., Comer, R. E., Kent, C., and Scaife, A. A.: What chance of a sudden stratospheric warming in the southern hemisphere?, *Environmental Research Letters*, 15, 104038, 10.1088/1748-9326/aba8c1, 2020.
- White, I., Garfinkel, C. I., Gerber, E. P., Jucker, M., Aquila, V., and Oman, L. D.: The Downward Influence of Sudden Stratospheric Warnings: Association with Tropospheric Precursors, *Journal of Climate*, 32, 85-108, 2019.
- 680 Wittenberg, A. T., Rosati, A., Lau, N.-C., and Ploshay, J. J.: GFDL's CM2 Global Coupled Climate Models. Part III: Tropical Pacific Climate and ENSO, *Journal of Climate*, 19, 698-722, 10.1175/jcli3631.1, 2006.



## Figures, Figure Captions, and Tables

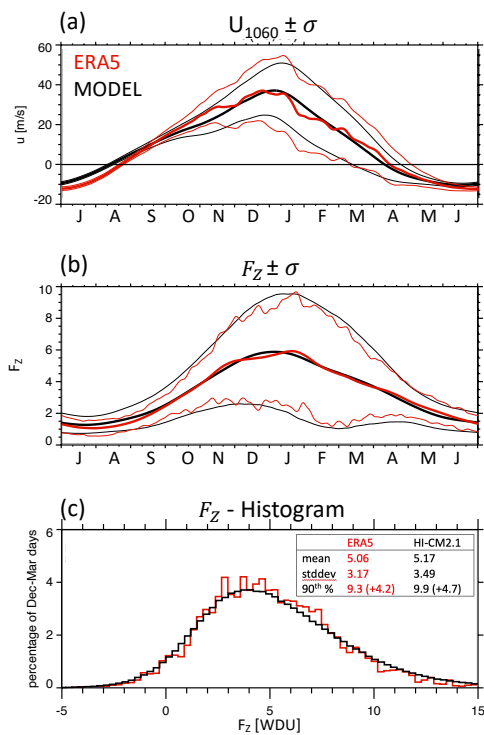
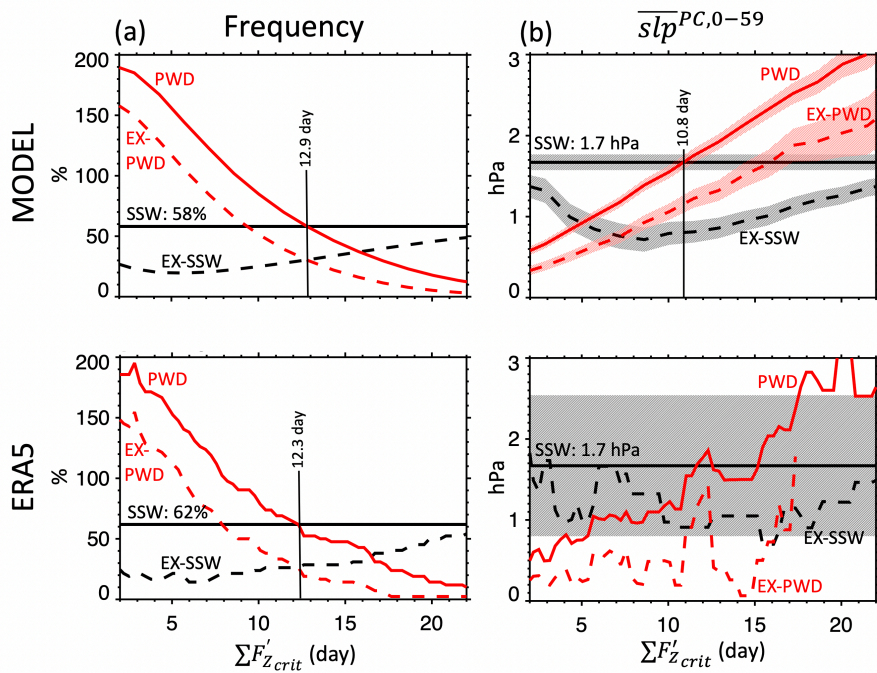


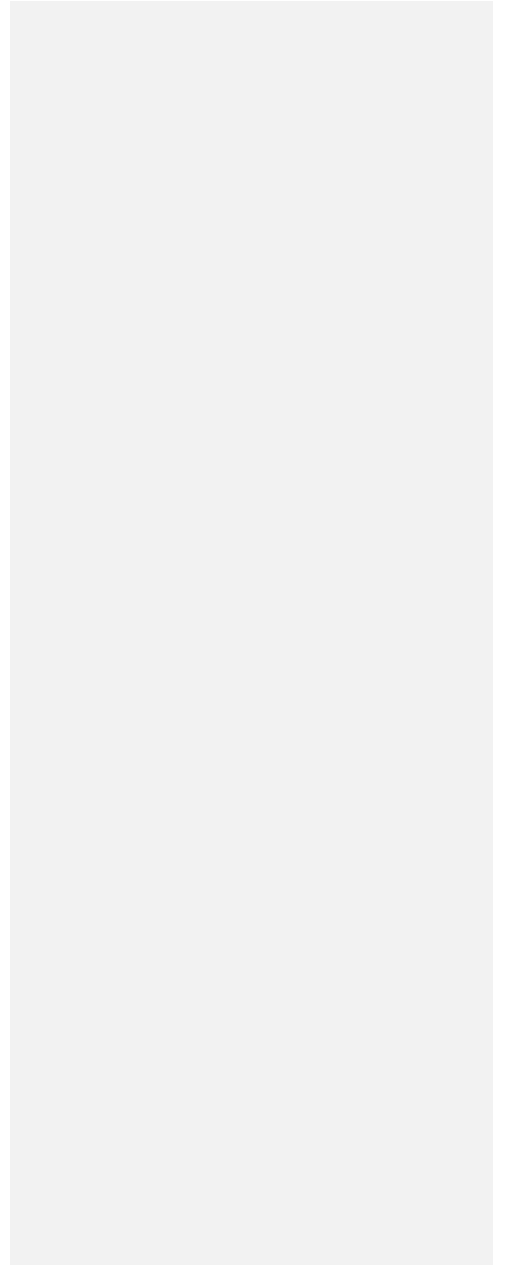
Figure 1: Model validation against ERA5 reanalysis (1979-2020) for (a) the (**thick**) climatological seasonal cycle of the zonal-mean wind at 10 hPa and 60°N  $u_{1060}$  ( $\text{m}\cdot\text{s}^{-1}$ ) and (**thin**) its  $\pm 1$  standard deviation, (b) the (**thick**) climatological seasonal cycle of the stratospheric wave driving  $F_Z$  ( $\sim 10^5 \text{ kg}\cdot\text{m}\cdot\text{s}^{-4}$ , or WDU) and (**thin**) its  $\pm 1$  standard deviation, and (c) the daily distribution of  $F_Z$  during northern winter (DJFM). Inset in (c) shows the mean, the standard deviation, and the 90-percentile of the two distributions.

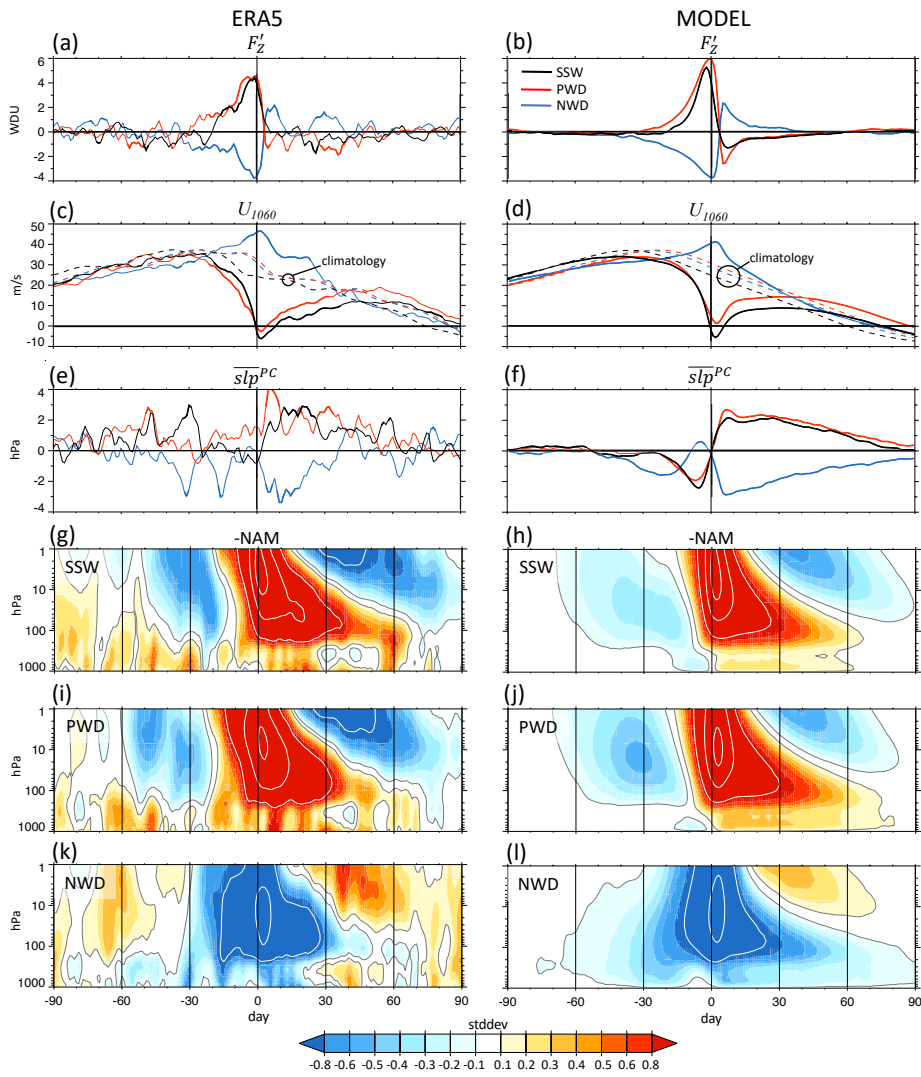


715  
720  
Figure 2: Sensitivity of (a) event frequency (%) and (b) surface response (hPa) to the wave driving  $\Sigma F'_{Zcrit}$ . **Event frequency is given in %, i.e., events per year multiplied by 100.** The surface response in (b) is the polar-cap-averaged (60-90°N) sea level pressure (SLP) anomaly averaged from day 0 to 59 after onset ( $\overline{slp}^{PC,0-59}$ ). Thick horizontal line is for SSWs. Shading in (b) shows the 95% confidence intervals. EX-PWDs and EX-SSWs are events that are either only PWDs or only SSWs. The top panels for the model show that (a) at  $\Sigma F'_{Zcrit} = 12.9$  day the frequency of PWDs is similar to SSWs, and (b) that at  $\Sigma F'_{Zcrit} = 10.8$  day the SLP response to PWDs is similar to SSWs.

Formatted: Font color: Auto

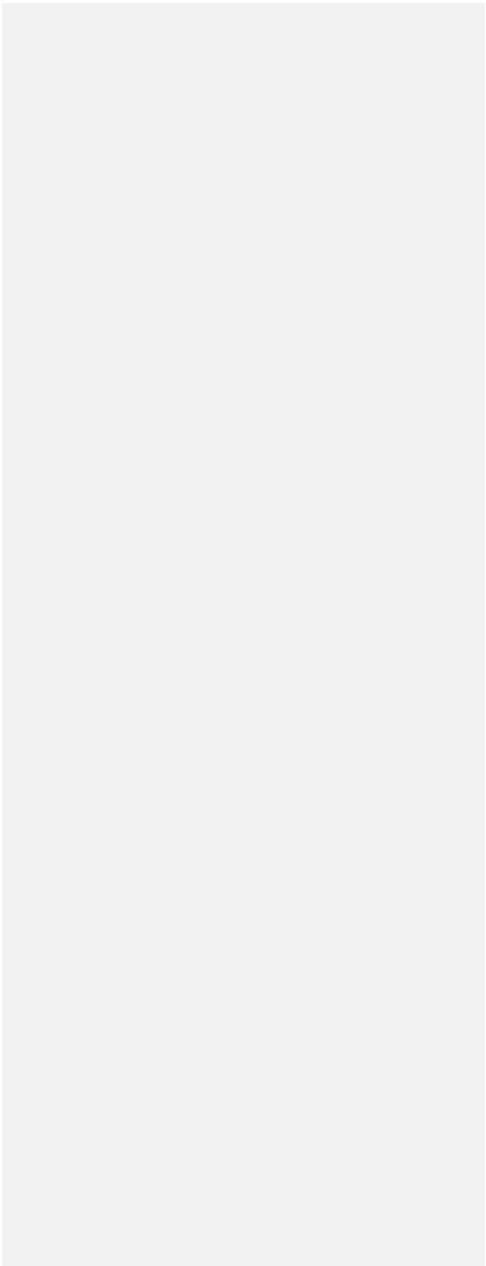
|

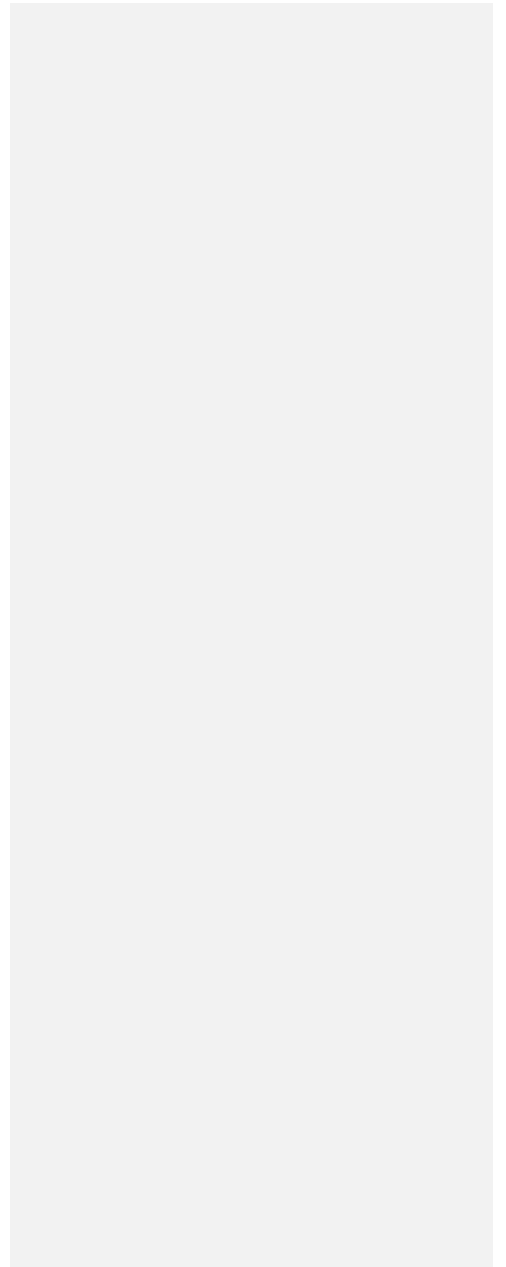


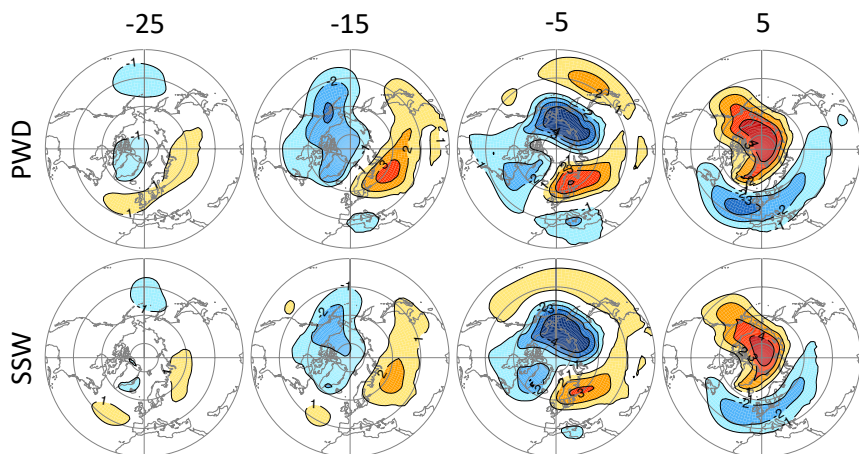




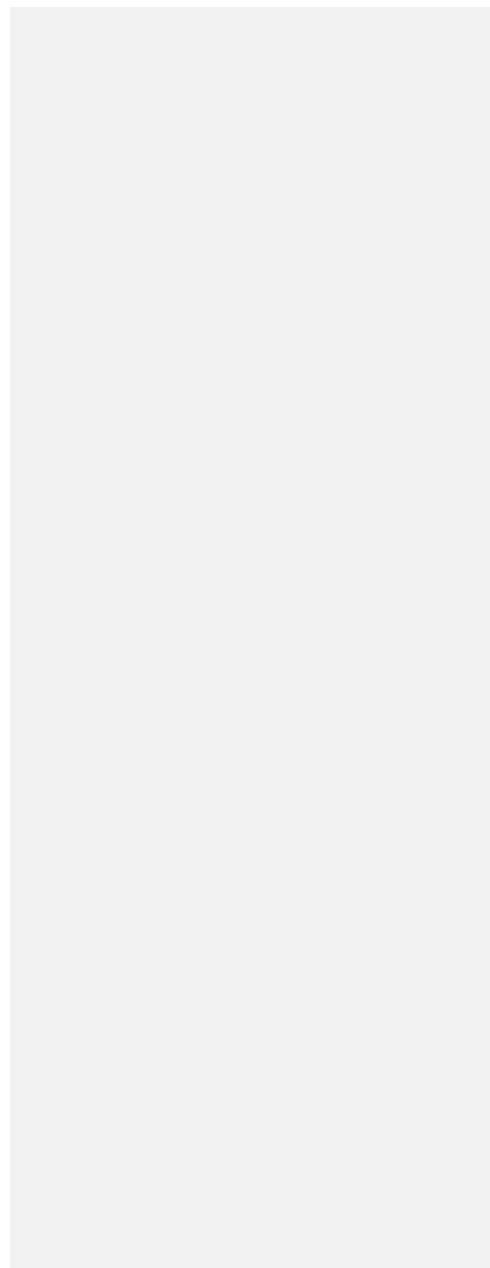
725 Figure 3: Composite-mean lifecycle of SSWs, PWDs, and NWDs. Shown are (a-b) anomalous wave driving  $F_z'$  (WDU), (c-d)  
 $u_{1066}$  (m/s), (e-f) anomalies of the polar cap averaged (60-90°N) SLP ( $\overline{\sigma P}^{PC}$ ) (hPa), and (g-j) time-height cross sections of  
 730 standardized polar-cap-averaged geopotential height anomalies (stddev); positive (negative) anomalies correspond to negative  
 (positive) NAM anomalies and are shaded reddish (blueish) from  $\pm 0.1$  to  $\pm 0.8$  standard deviations; additional white contours  
 are shown at  $\pm 1$ ,  $\pm 2$  and  $\pm 3$  standard deviations. Bold lines in (a-f) show anomalies that are significant according to a two-sided Student  
 $t$ -test at the 5% error level. Dashed thin lines in (c-d) show the associated climatological  $u_{1066}$ , aligned with the onset dates of the  
 respective events. Left panels are for the ~~NAR-ERA5~~ (26 SSWs and 26 PWDs; 62%), and right panels are for the model (525 SSWs  
 and 5226 PWDs, and 4068 NWDs; 58%). The PWD-wave driving threshold  $\sum F_z'_{crit}$  is 12.3 day for ERA5 and 12.9 day for the model.







735



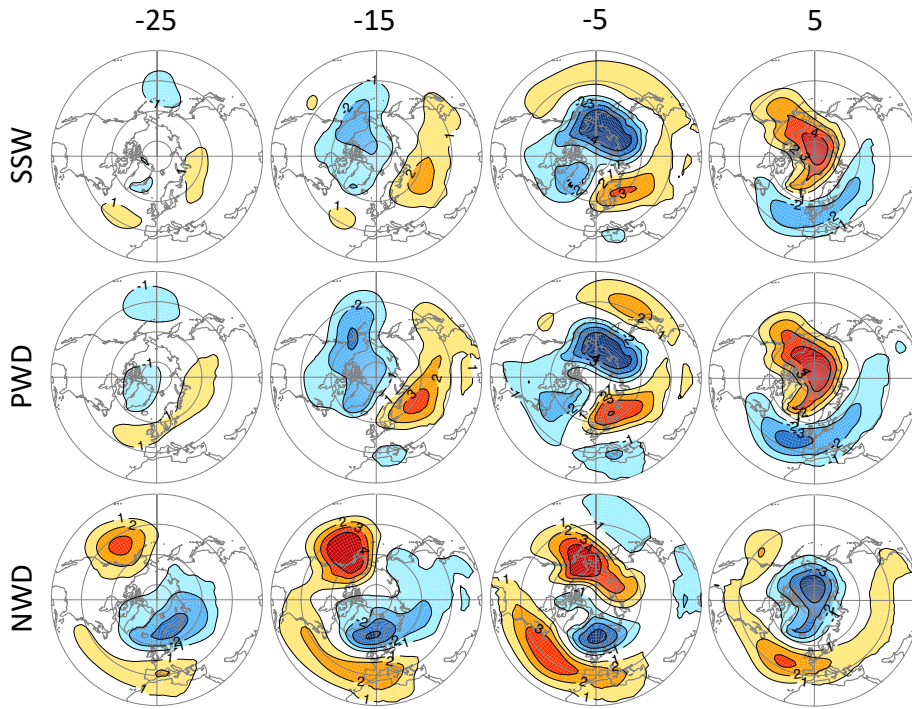
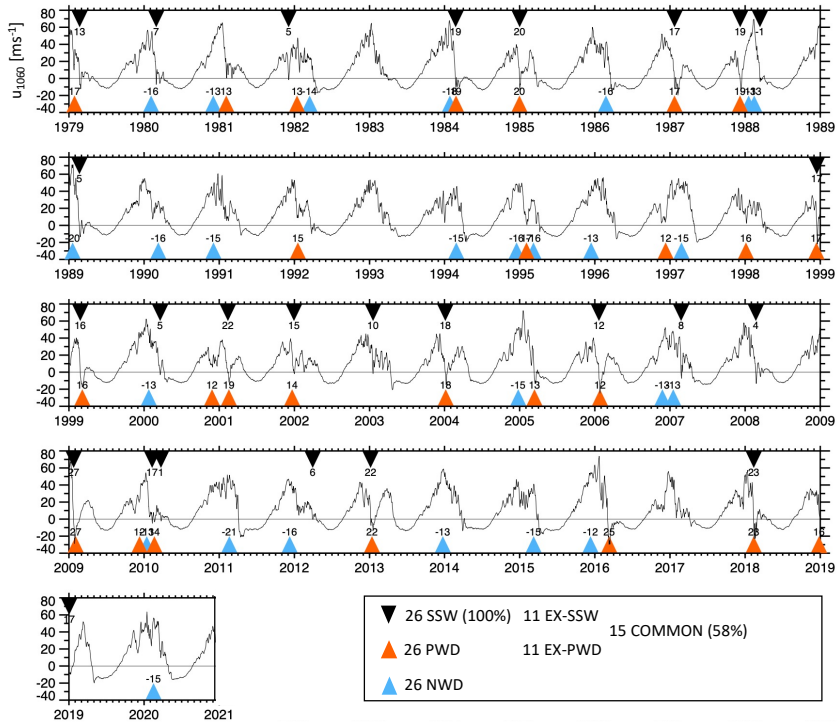


Figure 4: SLP precursors for model-generated (top) ~~PWDs~~ SSWs, (middle) PWDs, and (bottom) ~~NSSWDs~~ during neutral ENSO years. Shown are composite 10-day-mean SLP anomalies (hPa), centered on the lag days shown on top. Contour interval is 1 hPa. Reddish and blueish shadings denote positive and negative anomalies, respectively, which are all statistically significant at the  $p < 0.05$  level. The number of SSWs, PWDs, and NWDs is 2607, 2291, and 2172, respectively. PWD-composites contain 2291 and the SSW-composites contain 2607 events. PWD The wave driving threshold  $\Sigma F'_{z_{crit}}$  is 12.9 days. The composite Nino 3.4 index for SSWs, PWDs, and NWDs is -0.09 K, 0.04 K, and -0.24 K, respectively

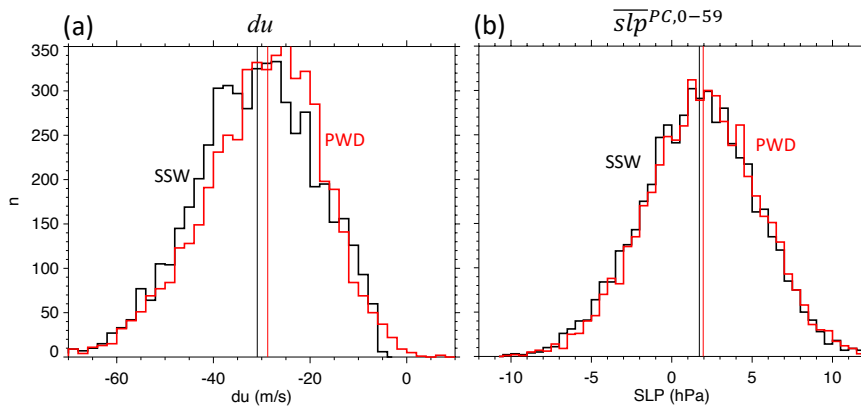
740



Formatted: Justified

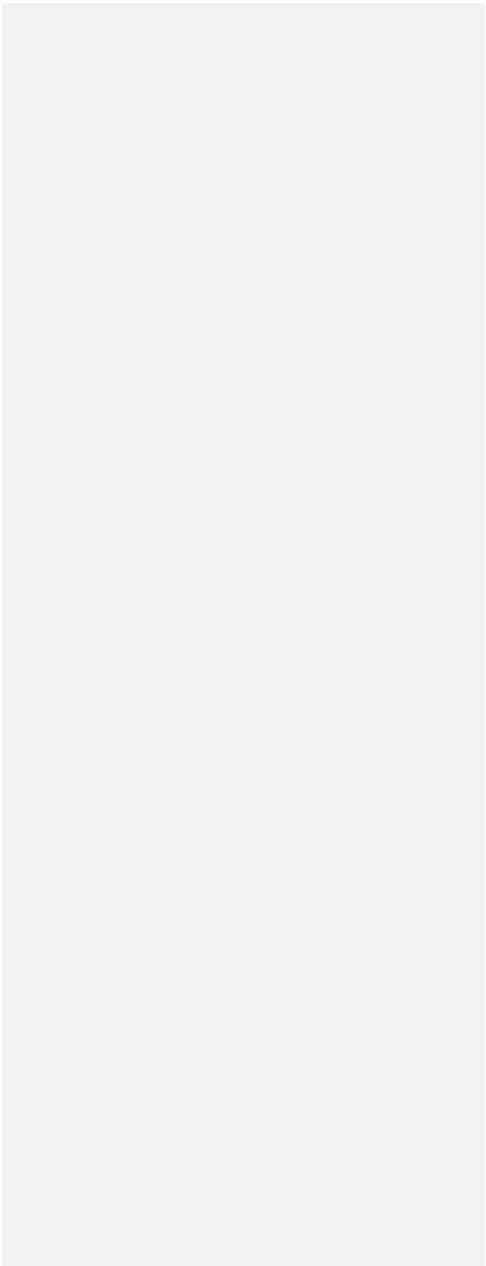
750 **Figure 5:**  $u_{1060}$  time series (m/s) and history of SSWs, PWDs, and NWDs in ERA5. Horizontal axis shows years; triangles and small numbers show event day of year (0 = 1/1), small numbers indicate  $\Sigma F_z^*$  in days. The PWD wave driving threshold  $\Sigma F_z^*$  is 12.3 days.

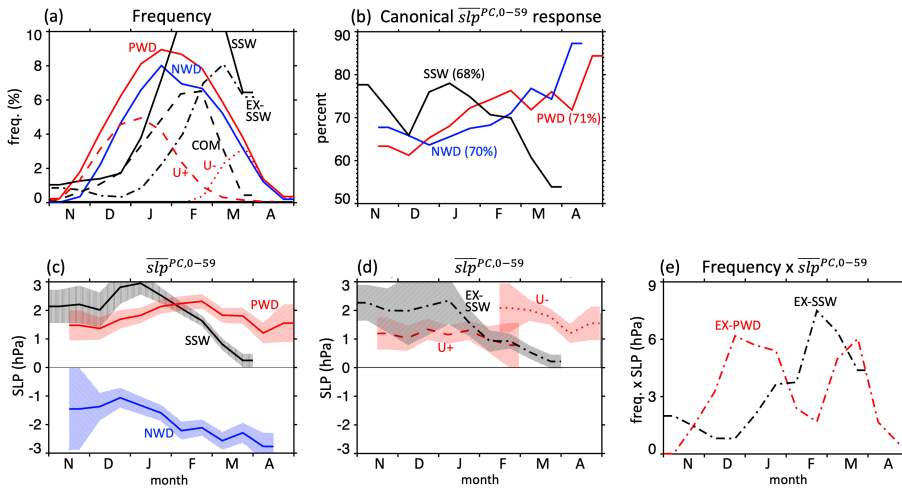
755  
760  
765



770

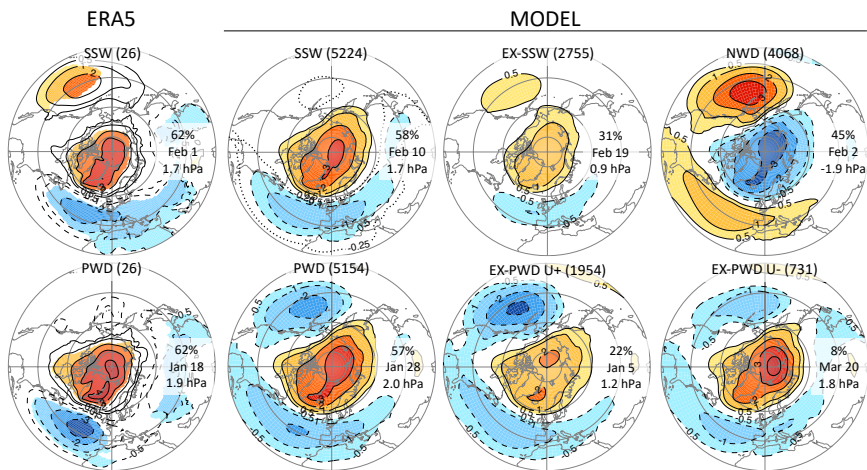
775 **Figure 6: Response histograms of model-simulated SSWs and PWDs in stratosphere and troposphere. Shown are responses to all (black) SSWs and (red) PWDs in terms of (a) the minimum anomalous  $u_{1060}$ ,  $du_{min}$ , and (b) the polar cap averaged SLP following the events ( $\overline{slp}^{PC,0-59}$ ). Vertical axis gives number of events  $n$  per bin. Thin vertical lines give the medians of the distributions. PWD wave driving threshold  $\Sigma F'_{z_{crit}}$  is 12.9 days. Shown are the outcomes from 5224 SSWs and 5154 PWDs.**





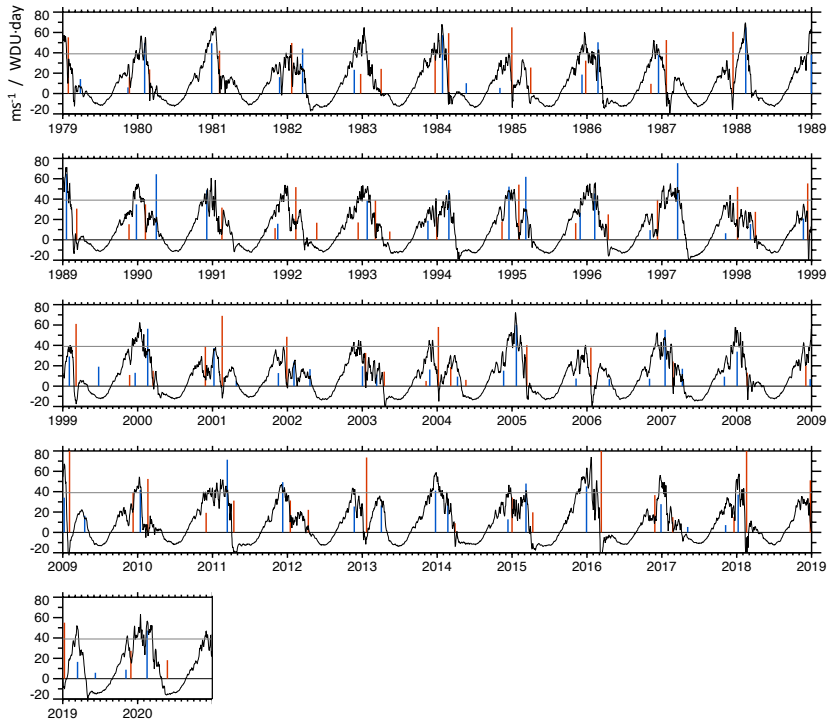
785 Figure 7: Seasonality of event frequency and surface response in the model. Shown are histograms of (a) the frequency of events (%) (b) the percentage of cases that  $\overline{s1p}^{PC,0-59}$  has the expected sign ( $> 0$  for SSWs and PWDs;  $< 0$  for NWDs), (c-d)  $\overline{s1p}^{PC,0-59}$ , and (e) the product of frequency and  $\overline{s1p}^{PC,0-59}$  averaged over all cases within one bin for the shown events as a function of the day of the year (horizontal axis, Nov. – Apr.). PWD wave driving threshold  $\sum F_{crit}^+$  is 12.9 days, and bin-size is 15 days. **Partly hidden**  
 790 **black curve for SSWs in (a) peaks at the end of February at ~13%.** Shadings in (c) and (d) show the 95% confidence intervals determined from a t-test. Black is for SSWs, red is for PWDs, and blue is for NWDs. Continuous lines show all events of one class (SSWs, PWDs, or NWDs), dashed red lines in (a) and (d) are EX-PWD U+ events, dotted red lines in (a) and (d) are EX-PWD U- events, black dashed lines in (a) are common events (COM), and dashed-dotted lines in (a) and (e) are EX-PWD (both U+ and U-) or EX-SSW events.





800 Figure 8: SLP response to stratospheric events. Shown are composite SLP anomalies (hPa), averaged from day 0 to 59 after event onset. (left) column is for ERA5, remaining columns are for the model. Shadings indicate anomalies that are statistically significant according to a two-sided t-test at the 5% error level. Contours are at  $\pm 0.5, \pm 1, \pm 2, \pm 3, \pm 4$  hPa; extra dotted contour at  $-0.25$  hPa is only shown for model simulated SSWs. Annotations in each map indicate (i) absolute frequency, (ii) mean onset date, and (iii)  $\overline{\text{stp}}^{PC,0-59}$ . PWD wave driving threshold  $\sum F'_{z_{crit}}$  is 12.9 days for the model and 12.3 days for ERA5. EX-PWD are PWDs that are not SSWs, and they are shown separately for U+ ( $u_{min} > 0$ ) and U- ( $u_{min} < 0$ ).

805



810 **Figure 9: ERA5 wave driving events with  $|\Sigma F_z^w| \geq 5$  WDU·day. Vertical bars show onset dates of individual PWD (red) and NWD (blue) events, with length of bars indicating  $|\Sigma F_z^w|$  of the events (in WDU·day). Events are only shown if there is no other same-signed stronger event nearby (< 60 days). Black curve shows the corresponding  $u_{1000}$  time series (m/s) and horizontal axis shows years. The strongest PWD was in February 2009 ( $\Sigma F_z^w = 86$  WDU·day), which was also a SSW, followed by 2016 (81 WDU·day) and 2018 (80 WDU·day). The strongest NWD was 1997 (75 WDU·day), followed by 1988 and 2011 (both 65 WDU·day).**

815

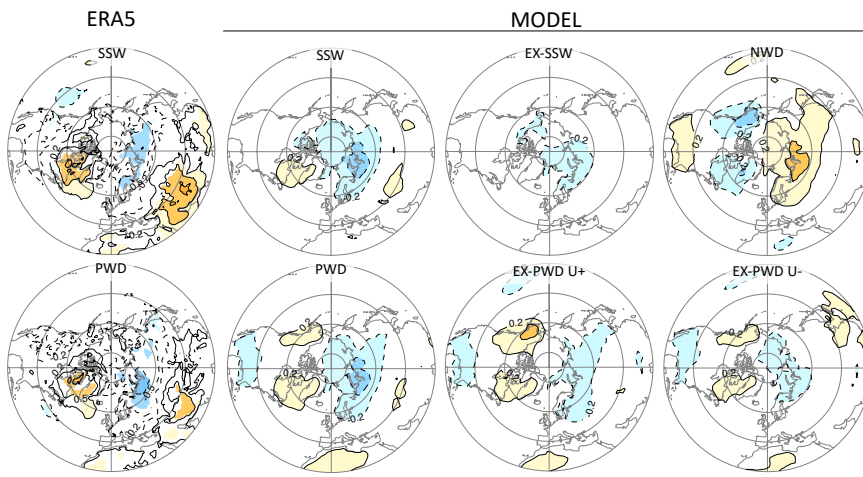
820

**Table 1: Statistics of the accumulated wave driving anomaly,  $\sum F'_z$ . Tabulated are the mean, maximum, and minimum of  $\sum F'_z$  (units: day) prior to the onset of the various events. The threshold  $\sum F'_{z_{crit}}$  for PWD and NWDs is  $\pm 12.9$  days for the model and  $\pm 12.3$  days for the ERA5.**

825

	ERA5			Model		
	SSW	PWD	NWD	SSW	PWD	NWD
mean	13.2	16.9	-14.9	12.5	17.5	-13.2
max	27.0	27.0	-12.3	42.5	42.5	-12.9
min	-0.7	12.3	-20.6	-18.5	12.9	-34.9

830



835 Figure A1: As Fig. 8 but for 2m temperature. Contours are at  $\pm 0.2$ ,  $\pm 0.5$ ,  $\pm 1$ , and  $\pm 1.5$  K.

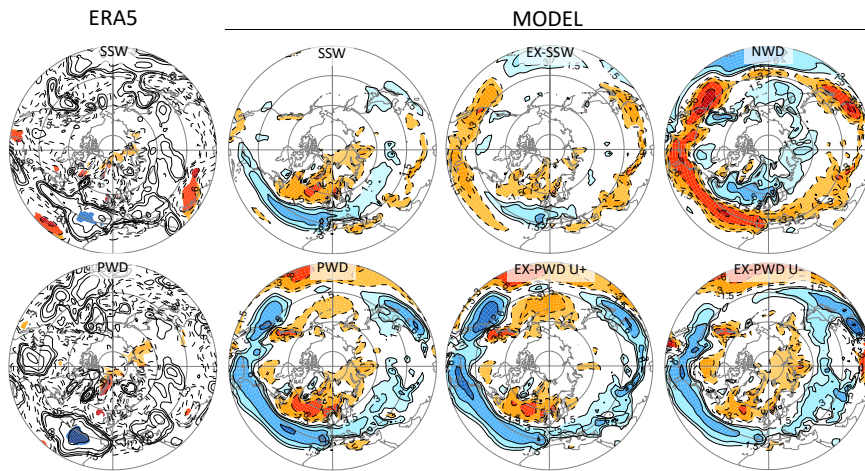


Figure A2: As Fig. 8 but for precipitation. Contours are at  $\pm 1.5, \pm 3, \pm 6, \pm 12, \pm 24$  mm/month.