

The global atmospheric energy transport analysed by a wavelength-based scale separation

Patrick Johannes Stoll¹, Rune Grand Graversen^{1,2}, and Gabriele Messori^{3,4}

¹Department of Physics and Technology, Arctic University of Norway, Tromsø, Norway

²Norwegian Meteorological Institute, Norway

³Dept. of Earth Sciences and Centre of Natural Hazards and Disaster Science (CNDS), Uppsala University, Uppsala, Sweden

⁴Dept. of Meteorology and Bolin Centre for Climate Research, Stockholm University, Stockholm, Sweden

Correspondence: Patrick Johannes Stoll (patrick.stoll@uit.no)

Abstract.

The atmosphere transports energy polewards ~~in form of~~ by circulation cells and eddies. To the present day, there is a knowledge gap regarding the preferred spatial scales and physical mechanisms of eddy energy transport. To investigate these, we separate the meridional atmospheric energy transport in the ERA5 reanalysis by spatial scales and into quasi-stationary and transient flow patterns and latent and dry components.

Baroclinic instability is responsible for ~~the formation of cyclones and anticyclones forming (anti)cyclones and small-scale Rossby waves~~ that vertically couple with ~~small Rossby waves, which are considered the dominating features of each other. These are the dominating atmospheric features at~~ the transient, synoptic ~~scales~~. We find that the maxima in both baroclinically-induced and transient energy transport occur for eddies with wavelengths around 5000 km, in good agreement with the prediction by linear baroclinic theory. However, both types of transport occur ~~within the wavelength band predominantly at wavelengths~~ between 2000 and 8000 km. ~~This result is~~, independent of latitude. Therefore, we ~~propose that~~ adapt the scale separation of the energy transport ~~should to~~ be based on the wavelength instead of the previously-used wavenumber ~~;~~ ~~and use the 2000–8000 km band to~~ ~~and~~ define the synoptic ~~scale~~. ~~In contrast to synoptic transport,~~ planetary transport at ~~wavelengths around and larger~~ transport by the wavelength band between 2000 km and smaller than 8000 km ~~favours situations of anomalously reduced meridional temperature contrasts~~.

We analyse the annual and seasonal mean in the transport components ~~as well as~~ ~~and~~ their inter-annual variability. The scale-separated energy transport components are fairly similar in both hemispheres. Transport by synoptic waves is the largest contributor to extra-tropical energy and moisture transport, ~~is mainly of~~ ~~mainly of~~ a transient character, and is little influenced by seasonality. In contrast, ~~the~~ transport by planetary waves highly depends on the season and has two distinct characteristics. (1) In the extra-tropical winter, planetary waves are ~~of major importance~~ ~~important~~ due to a large transport of dry energy. This planetary transport features the largest inter-annual variability of all components ~~;~~ and is mainly quasi-stationary in the Northern Hemisphere ~~;~~ but transient in its southern counterpart. (2) In the subtropical summer, quasi-stationary planetary waves are the most important transport component, mainly due to ~~advection of moisture,~~ ~~which is~~ ~~moisture transport~~, presumably associated with monsoons. In contrast to transport by planetary and synoptic waves, only a negligible amount of energy is transported by mesoscale eddies (< 2000 km).

1 Introduction

~~Atmospheric motions act to~~ Atmospheric motions reduce the thermal contrast created by differential solar heating between high and low latitudes (Hadley, 1735). Hence the atmospheric circulation transports large amounts of energy polewards (Oort and Peixóto, 1983) ~~;~~ and has thereby a fundamental role in controlling the local weather and climate (e.g. Holton and Hakim, 2013; Vallis, 2017). The energy is primarily transported in the form of warm air (dry energy: comprising mainly of enthalpy and potential energy) ~~;~~ and water vapour (latent energy) which releases energy when condensating before precipitation (Peixoto and Oort, 1992).

The characteristics of the energy transport differ among latitudinal zones (Trenberth and Stepaniak, 2003a). In the tropics and sub-tropics, where the Coriolis effect is small, energy is predominantly transported by a zonally-symmetric meridional overturning circulation, known as the Hadley cell (Hadley, 1735), and monsoon systems organised by quasi-stationary cells (Fig. 1a). In the extra-tropics, eddies transport the majority of the energy further poleward. Atmospheric eddies exist on a large range of scales, from planetary Rossby waves (Rossby, 1939) and transient synoptic Rossby waves that vertically interact with synoptic cyclones (Bjerknes, 1919), to mesoscale disturbances, such as polar lows (Businger and Reed, 1989). ~~Traditionally~~ Conventionally, the eddy transport is separated into a quasi-stationary ~~,~~ and a transient component (Fig. 1a), with the former representing monthly-mean eddies and the latter faster-varying deviations from this mean (Oort and Peixóto, 1983). Transient eddies dominate the extra-tropical energy transport in both hemispheres (Fig. 1a), whereas quasi-stationary waves transport a considerable amount of energy in the higher latitudes of the Northern Hemisphere (NH) and the sub-tropics of both hemispheres. ~~They are, however, of less relevance~~ However, they are less relevant in the extra-tropical Southern Hemisphere (SH).

Recent studies demonstrate the usefulness of ~~a scale separation of~~ separating the energy transport by spatial scales into planetary and ~~synoptic-scale~~ synoptic components. For instance, ~~these two types of waves~~ eddies at these two scales impact the Arctic differently (Baggett and Lee, 2015; Graversen and Burtu, 2016). The scale separation of the meridional energy transport by a zonal Fourier decomposition became popular in recent years ~~and~~. It was applied to study the mechanisms and impacts of energy transport in the Arctic region (Papritz and Dunn-Sigouin, 2020; Graversen et al., 2021; Rydsaa et al., 2021; Hofsteenge et al., 2022), and the NH mid-latitudes (Lembo et al., 2019). Further, numerous studies investigated the atmospheric dynamics in terms of Rossby waves at different spatial scales (e.g. Wirth et al., 2018; Röthlisberger et al., 2019).

~~Generally, the Fourier decomposition is non-local, hence the whole circle along which it is applied influences the size of the obtained eddies. This makes the Fourier decomposition useful if the circle is governed by similar eddies, which we observe from meteorological weather maps along zonal bands. Theoretically, a Fourier decomposition could be performed along longitude circles, e.g. along 0 and 180°. However, a circle going around both poles and crossing the equator twice crosses regions characterised by very different atmospheric features, making it questionable whether such a meridional Fourier decomposition provides useful insights.~~

~~However, arguably the zonal scale is connected to the meridional scale of eddies, becoming their general scale. From investigation of meteorological weather maps, we know (i) that synoptic-scale cyclones have an approximate similar zonal~~

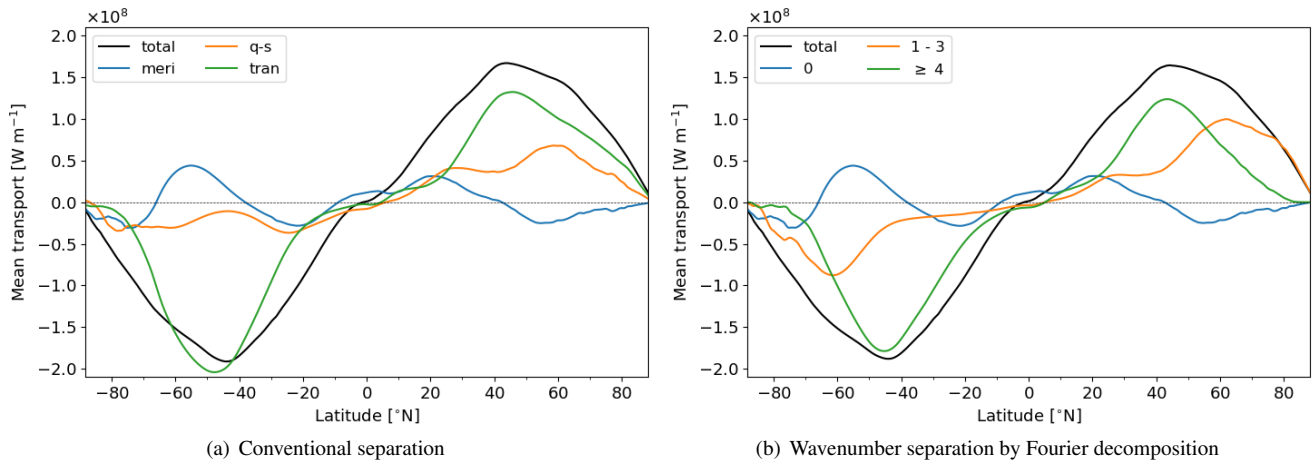


Figure 1. Different separation methods of the ~~vertical-integrated~~vertically-integrated, zonal-mean, northward transport of energy from ERA5 as a ~~mean of over~~ the years 1979 to 2018. (a) The ~~traditional partition~~conventional partitioning into the meridional overturning circulation (meri), quasi-stationary (q-s), and transient (tran) eddies, as performed by Oort and Peixóto (1983). (b) A decomposition into transport by different spatial scales defined by wavenumbers as suggested by Graversen and Burtu (2016). Transport by wave 0 provides the meridional overturning circulation. The sum of transport by waves 1–3 is often associated with planetary transport, whereas waves with larger wavenumbers are considered to be of synoptic scale.

60 ~~and meridional size since they are to first order circular, and (ii) that the meridional extent, i.e. the amplitude, of Rossby waves, appears to roughly match the distance between a trough and a ridge, featuring half a zonal wavelength. Further, we show later (e.g. Fig. 2) that most of the mid-latitude transport occurs at zonal wavelengths between 2000 and 8000 km. This is in broad agreement with the finding that events of extreme transport in the mid-latitudes are largely coherent over ranges of 10–30° latitude (Lembo et al., 2019, Fig. 1d–g), considering that the event, such as a cyclone, has the size of half a zonal wavelength. Hence, as many of the previously mentioned studies (Graversen and Burtu, 2016; Lembo et al., 2019, e.g.), we interpret the zonal wavenumber of an eddy, which is associated with a zonal wavelength at a given latitude, as its spatial scale. As previously mentioned, the typical size of the eddy is half a zonal wavelength. However, for the remainder of the study, we use the terms scale and zonal wavelength synonymously.~~

So far, the energy transport across all latitudes has only been separated by a fixed wavenumber as shown in Figure 1b and presented by (Graversen and Burtu, 2016). Wave 3 or 4 have often been taken as the separation between planetary and synoptic scales (~~Baggett and Lee, 2015, e.g.~~Baggett and Lee, 2015; Heiskanen et al., 2020). For investigation of the scale of the transport at a specific latitude or a small zonal band, such a separation by wavenumber is appropriate. However, the wavelength associated with a given wavenumber is latitude-dependent, which needs to be accounted for when defining the wavenumber separating spatial scales (Heiskanen et al., 2020). ~~Wave~~For instance, wave 4 ~~for instance~~ corresponds to a wavelength of 8200 km at 35°, but only to 2600 km at 75°, which can be interpreted to represent different spatial scales. Such a partitioning by wavenumber thus has two caveats: i) Towards the poles, all eddy transport converges to the planetary scale (Fig. 1b). ii) In

the subtropics, wavenumbers 1–3 appear to miss parts of planetary transport, as can be inferred from quasi-stationary eddies in the subtropical SH (Fig. 1a), being considerably larger than the planetary transport captured by wavenumbers 1–3 (Fig. 1b).

80 ~~In this study, we propose a revised partition~~ This study proposes a revised partitioning by spatial scales based on wavelength ~~–This circumvents to circumvent~~ the above-mentioned problems associated with separation by wavenumber. ~~Hereby~~ With this, we partition the transport into planetary, synoptic and mesoscale components to understand their role ~~for in~~ transporting energy poleward. In addition, we apply the ~~traditional-conventional~~ decomposition of the transport into stationary and transient parts (Fig. 1a), as well as dry and latent components (Peixoto and Oort, 1992).

The new scale-separation method is employed to analyse meridional energy transport by the global atmospheric circulation. 85 Previous studies found that transport by quasi-stationary waves is important in the NH, but almost negligible in the SH (e.g. Peixoto and Oort, 1992). Such quasi-stationary transport is often associated with the planetary scale, which appears to imply that planetary transport is irrelevant in the SH (e.g. Trenberth and Stepaniak, 2003a). However, this is not the case since planetary waves are strongly represented in the SH as shown in Fig. 1b. In contrast, transport by transient eddies is often associated with baroclinic eddies at the synoptic scale (e.g. Trenberth and Stepaniak, 2003a). However, transport at other 90 scales could be ~~of transient character~~ transient as well. In this study, we underscore that the separation of transport into a quasi-stationary and transient contribution ~~is different~~ differs from a separation into planetary and synoptic scales, ~~although,~~ However, a correlation exists between the two, especially for the NH.

To summarise the main research questions posed in this study:

1. What useful information do the different ~~partitions~~ separations of the atmospheric energy transport provide?
- 95 2. What characterises the atmospheric energy transport in different meridional bands?

These questions are targeted in Sections 3 and 4. The main results are then summarised and discussed in Section 5. However, first, we present the utilised data and methods.

2 Data and methods

2.1 ERA5 reanalysis

100 The atmospheric energy transport for the period 1979–2021 is analysed with ERA5 (Hersbach et al., 2020), the fifth atmospheric reanalysis from the European Centre for Medium-Range Weather Forecasts (ECMWF). ERA5 provides hourly fields at a spectral truncation of T639, ~~which is~~ equivalent to a grid spacing of 30 km, and with 137 vertical ~~hybrid~~ hybrid-sigma levels. For this study, fields of air temperature, specific humidity, geopotential height and horizontal wind components at all hybrid levels, and surface pressure and surface topography are used on a $0.25^\circ \times 0.25^\circ$ horizontal grid spacing. Since reanalysis data 105 are prone to include mass-flux inconsistencies (Trenberth, 1991), a barotropic mass-flux correction is applied to the wind field ~~prior to~~ before calculating the energy transport (Graversen, 2006).

2.2 Zonal mean versus zonal integral

The zonal integral of the ~~energy transport from ERA5~~ ERA5 energy transport (Fig. S1a) confirms ~~the transport in that~~ found in previous studies using data sets with lower spatial resolution (Peixoto and Oort, 1992; Trenberth and Caron, 2001; Graversen and Burtu, 2016). For instance, the zonal-integrated poleward transport peaks at 4.8×10^{15} W in the NH and 5.6×10^{15} W in the SH at 41° latitude in both hemispheres. By computing the zonal integral of the energy transport, which depends on the length of the longitude circle, the transport becomes small at high latitudes since the longitudes converge (Fig. S1a). However, the local transport, expressed by the zonal mean, is considerable also in the polar regions (Fig. S1b). Hence, to compare the local importance of the atmospheric energy transport across all latitudes, we take a zonal-mean perspective which provides the transport through an atmospheric column with one metre width. The latitude of maximum zonal-mean transport, namely the location at which the largest local meridional transport occurs, is at 45° latitude in both hemispheres (Fig. S1b), different ~~to~~ from the maximum zonally-integrated transport peaking at 41° .

For the calculation of convergence of energy transport, a 2° running-mean filter is used along the meridional dimension before computing the meridional derivatives.

2.3 Decomposition of the energy transport

The atmospheric energy transport and its components are characterised by a large day-to-day variability (~~Swanson and Pierrehumbert, 1997~~ Swanson and Pierrehumbert, 1997; Messori and Czaja, 2013). However, here we focus on the annual-mean and season-mean energy transport, firstly to investigate the "normal" time-mean behaviour of the atmospheric circulation, and secondly to compare the ~~traditional~~ newly-introduced separation of the ~~transport by quasi-stationary and transient eddies with a separation eddy transport~~ based on spatial scales. ~~This – described below – with the conventional separation into quasi-stationary and transient transport introduced by Oort and Peixoto (1983) and commonly used in the literature (Trenberth and Stepaniak, 2003a, b; Kaspi and Schne~~ The conventional separation obtains quasi-stationary eddies from monthly-mean fields; hence a comparison is only possible from a time-mean perspective, ~~since the computation of quasi-stationary eddy transport requires a predefined time period over which the eddies are considered stationary, which is traditionally set to one month (Oort and Peixoto, 1983). Since this study focuses on the mean transport,~~ Quasi-stationary eddies could be defined differently, for example, by application of a subsequent study is planned for investigating the short-time variability and the extremes of the different energy transport components temporal low pass filter, such the methods could be compared without taking time averages. However, this would prevent a direct comparison with the literature and require a new ad-hoc analysis, and is beyond the scope of this study.

~~This study investigates~~ We define the vertically-integrated, zonal-mean, time-mean, meridional ~~transport of atmospheric energy~~ total atmospheric energy transport,

$$\widetilde{vE} = \int_0^{p_s} [\overline{vE}] \frac{dp}{g}, \quad (1)$$

where v is the meridional wind, E is the atmospheric energy, p pressure, p_s surface pressure, g the gravitational constant, $\bar{\cdot}$ denotes a monthly time average, and $[\cdot]$ the zonal average. We decompose the total atmospheric energy transport, \widetilde{vE} , in three ways that can be applied in succession:

140 1) The total atmospheric energy transport, \widetilde{vE} , is partitioned into latent energy transport, \widetilde{vQ} , and dry energy transport, \widetilde{vD} , following (Oort and Peixóto, 1983). This is achieved by separating the total atmospheric energy, E , in Equation 1 into its latent component, Q , and dry component, D , which comprises the enthalpy, $C_p T$, potential energy, gz , and kinetic energy, $\frac{v^2}{2}$,

$$E = Q + D = Lq + \left(C_p T + gz + \frac{v^2}{2} \right), \quad (2)$$

with q being specific humidity, L the latent heat release by condensation, C_p specific heat capacity at constant pressure, T temperature, and \mathbf{v} the horizontal wind vector.

2) The total energy transport, \widetilde{vE} , expressing ~~an a~~ time-mean transport, is separated into transport by transient eddies, $\widetilde{vE}^{tran} = \int_0^{p_s} [\overline{v'E'}] \frac{dp}{g} \widetilde{vE}^{tr} = \int_0^{p_s} [\overline{v'E'}] \frac{dp}{g}$, quasi-stationary eddies, $\widetilde{vE}^{q-s} = \int_0^{p_s} [\overline{v^*E^*}] \frac{dp}{g}$, and the mean meridional circulation, $\widetilde{vE}^{meri} = \int_0^{p_s} [\overline{v}][\overline{E}] \frac{dp}{g} \widetilde{vE}^{md} = \int_0^{p_s} [\overline{v}][\overline{E}] \frac{dp}{g}$, by partitioning the zonal-mean, time-mean transport, $[\overline{vE}]$, in Equation 1 according to Oort and Peixóto (1983) and Peixoto and Oort (1992) by

$$150 \quad [\overline{vE}] = [\overline{vE}] + [\overline{v'E'}] = [\overline{v}][\overline{E}] + [\overline{v^*E^*}] + [\overline{v'E'}], \quad (3)$$

with $'$ denoting anomalies from the time mean, and $*$ denoting zonal anomalies from the zonal mean. The first equality is separating the time-mean transport into the transport by the time-mean fields, $[\overline{vE}]$, and by faster-varying fluctuations, $[\overline{v'E'}]$. The second equality partitions the ~~former time-mean~~ term into a zonally-symmetric transport component, $[\overline{v}][\overline{E}]$, and a contribution by zonal waves, $[\overline{v^*E^*}]$. ~~In principle the~~ The duration of the time mean, $\bar{\cdot}$, for which eddies are considered quasi-stationary, is arbitrary. However, ~~traditionally conventionally~~ the mean is taken over one month periods (Oort and Peixóto, 1983) (e. g. Oort and Peixóto, 1992). Hereby, the quasi-stationary eddy transport, $[\overline{v^*E^*}]$, provides the transport given by the monthly-mean eddies, and the transient transport, $[\overline{v'E'}]$, is the ~~residual~~ faster varying component. The annual-mean energy transport partitioned in this ~~traditional conventional~~ manner is depicted in Figure 1a. The transport of latent energy, \widetilde{vQ} , and dry energy, \widetilde{vD} , is partitioned ~~in a similar manner similarly~~.

160 3) ~~The Finally, the~~ total energy transport, \widetilde{vE} , is ~~lastly~~ separated into transport by eddies at the planetary scale, $\widetilde{vE}_{plan} \widetilde{vE}_p$, the synoptic scale, $\widetilde{vE}_{syno} \widetilde{vE}_{su}$, and the mesoscale, $\widetilde{vE}_{meso} \widetilde{vE}_{ms}$, as well as the meridional circulation, $\widetilde{vE}_{meri} \widetilde{vE}_{md}$. For the ~~partition partitioning~~ into spatial scales ~~the, a~~ Fourier decomposition is applied along each latitude, ϕ , at each vertical model level, and at every time step for E and v following Graversen and Burtu (2016),¹ following Graversen and Burtu (2016). The Fourier series of E yields:

$$165 \quad E = \frac{a_0^E}{2} + \sum_{n=1}^{\infty} a_n^E \cos\left(\frac{n2\pi x}{d}\right) + b_n^E \sin\left(\frac{n2\pi x}{d}\right), \quad (4)$$

¹To be precise, the Fourier decomposition is applied on the mass flux, $v dp/g$, since the thickness, dz , times density, ρ , providing the mass thickness of the model layers, $dp/g = -\rho dz$, is non-constant in hybrid-sigma coordinates.

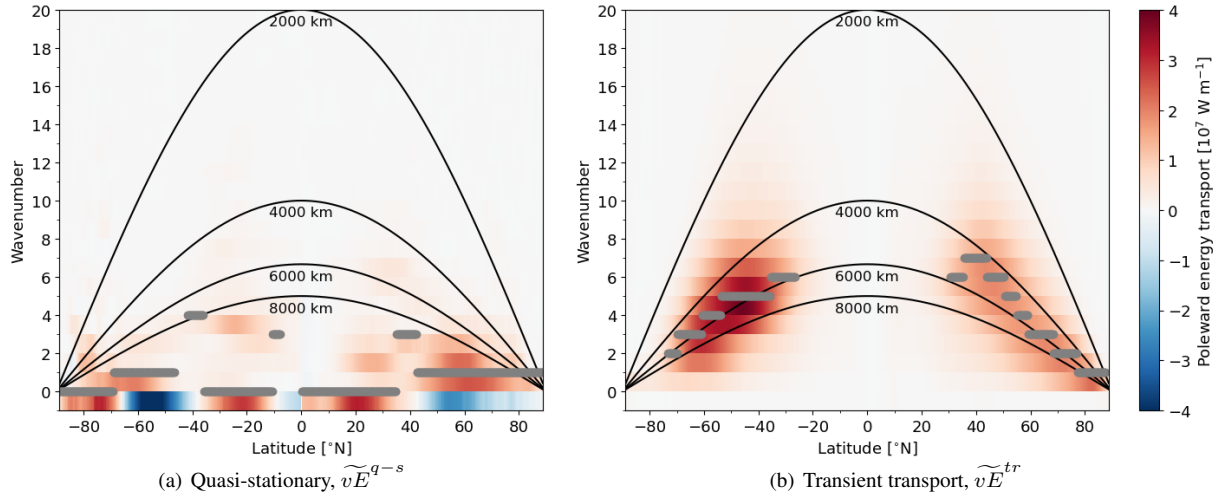


Figure 2. The annual-mean, zonal-mean of the Fourier-decomposed poleward transport of energy from ERA5 by each wave at all latitudes. (a) Depicts the decomposition of the quasi-stationary and (b) of the transient energy transport. The wavenumbers corresponding to wavelengths of 2000, 4000, 6000 and 8000 km are depicted by black curves. The first and last curve separate the transport into the meso, synoptic and planetary scale. At each latitude the wave of maximal poleward energy transport is denoted in displayed with a grey dot. The dot is not displayed at latitudes where values are masked if the this wave is responsible for less than 5% of the total quasi-stationary/ transient transport at of the latitude with maximum transport.

with where x is the zonal coordinate, $d = 2\pi a \cos(\phi)$, $a = 6371$ km (Earth's radius), and the coefficients: Fourier coefficients, a_n^E and b_n^E , are given as:

$$a_n^E = \frac{2}{d} \oint E \cos\left(\frac{n2\pi x}{d}\right) dx, \quad b_n^E = \frac{2}{d} \oint E \sin\left(\frac{n2\pi x}{d}\right) dx, \quad (5)$$

170 The where n is zonal wavenumber. The Fourier coefficients for the meridional wind, v , a_n^v and b_n^v , are derived in a similar manner.

The transport associated with the meridional circulation is then given by:

$$[vE]_{meri} = \frac{1}{4} a_0^v a_0^E.$$

which becomes similar to \widetilde{vE}^{meri} for monthly time averages.

175 The Based on this Fourier decomposition, the time-mean, zonal-mean transport by wave n is given by energy transport can be written as:

$$[vE]_n = \frac{1}{2} \underline{a_n^v a_n^E} + \frac{1}{4} \overline{a_0^v a_0^E} + \frac{1}{2} \sum_{n=1}^{\infty} \overline{\{a_n^v a_n^E + b_n^v b_n^E\}} \quad (6)$$

Note that the cross terms a_n^v and a_m^E with $n \neq m$, and similarly b_n^v and b_m^E , vanish when computing a zonal average since the Fourier components coefficients feature an orthogonal basis. In the following, we show how this decomposition relates to the decomposition by Oort and Peixoto (1983) expressed in Eq. 3.

180 This partition is applied to the instantaneous co-variability, vE in Equation 1, resulting in the wave-separated total transport, as well as to the transport by monthly-mean fields, \overline{vE} in Equation 6 can be approximated by the first term on the RHS of Eq. ??, resulting in the wave-separated quasi-stationary transport, \widetilde{vE}^{q-s} . The annual-mean transport by each quasi-stationary wave (applying 3):

$$\frac{1}{4} \overline{a_0^v a_0^E} = \overline{[v][E]} = \overline{[\overline{v}][\overline{E}]} + \overline{[v'] [E']} \simeq \overline{[\overline{v}][\overline{E}]} \quad (7)$$

185 since $\overline{[v'] [E']}$, the time-mean of the transient part of the meridional circulation, is small. Hence, the time-mean transport by the meridional overturning circulation can also be written as $\overline{vE}_{md} = \int_0^{p_s} \frac{1}{4} \overline{a_0^v a_0^E} \frac{dp}{g}$.

The second term in Eq. 11 on $[\overline{v'E'}_n]$ as a function of latitude is displayed in Figure 6 is a time-mean transport by eddies, $\overline{[v^*E^*]}$ and can be separated into stationary and transient eddy transport:

$$\frac{1}{2} \sum_{n=1}^{\infty} \overline{\{a_n^v a_n^E + b_n^v b_n^E\}} = \overline{[v^*E^*]} = \overline{[\overline{v^*E^*}]} + \overline{[v'^*E'^*]}. \quad (8)$$

190 The stationary eddy part is the second term on the RHS of Eq. 2a. The wave-separated transient transport, \widetilde{vE}^{tran} , (Fig 3 and can also be expressed by:

$$\overline{[\overline{v^*E^*}]} = \frac{1}{2} \sum_{n=1}^{\infty} \overline{\{\overline{a_n^v a_n^E} + \overline{b_n^v b_n^E}\}}. \quad (9)$$

The transient eddy part, $\overline{[v'^*E'^*]}$, is the difference between the total transient transport, $\overline{[v'^*E'^*]}$ (term 3 on RHS of Eq. 2b) is derived by subtracting the 3), and the transient part of the meridional circulation $\overline{[v'] [E']}$, which is again small in the time mean, hence:

$$\overline{[v'^*E'^*]} = \overline{[v'E']} - \overline{[v'] [E']} \simeq \overline{[v'E']}. \quad (10)$$

Having shown the relation of the terms in the Fourier decomposition with the transient and quasi-stationary component from the total wave-separated transport given by Equation 11, terms in the conventional decomposition, we now introduce the scale separation of the eddy transport. The instantaneous zonal-mean transport by wave n is given by:

$$200 \overline{[v^*E^*]}_n = \frac{1}{2} (a_n^v a_n^E + b_n^v b_n^E). \quad (11)$$

To separate the energy transport between the scale s and the next smaller scale $s+1$ (at larger wavenumber) based on the two scales based on a predefined wavelength, $\lambda_{s+1} \lambda_{sep}$, the latitudinal-dependent (ϕ) separation (wave) number, n_{s+1} wavenumber of separation, n_{sep} , is computed:

$$\widetilde{n}_{s+1 sep} = \frac{2\pi \cdot a \cdot \cos(\phi)}{\lambda_{s+1}} \frac{2\pi \cdot a \cdot \cos(\phi)}{\lambda_{sep}}. \quad (12)$$

205 ~~To separate planetary waves from the meridional overturning circulation, $n_{plan} = 0$ is applied. For the~~ The wavenumber of
separation between planetary and synoptic ~~waves, the separation number, n_{syno} eddies, $n_{p/s}$,~~ is computed at each latitude from
the wavelength ~~$\lambda_{syno} = 8000$ $\lambda_{p/s} = 8000$ km (lower black solid line in Fig. 2). Synoptic and mesoscale eddies are separated~~
at a wavelength of ~~$\lambda_{meso} = 2000$ $\lambda_{s/m} = 2000$ km. In Section 3, we argue for the usage of these two wavelengths for scale-~~
separating the energy transport. The ~~separation numbers wavenumbers of separation,~~ as defined here, are real numbers. To
210 ensure a continuous separation (Fig. S2b), instead of abrupt transitions (Fig. S2a), the transport ~~given by eddies of spatial scale,~~
~~s, by planetary, synoptic and mesoscale eddies~~ is defined by:

$$[vE_s]_{[n_s] + p} = \sum_{n=[n_s]+1}^{[n_s+1]} [v^*E^*]_n + (n_{s+1/p/s} - [n_{s+1/p/s}]) \cdot [v^*E^*]_{[n_{s+1}], [n_{p/s}]} \quad (13)$$

$$[v^*E^*]_{sy} = ([n_{p/s}] - n_{p/s}) \cdot [v^*E^*]_{[n_{p/s}]} + \sum_{n=[n_{p/s}]+1}^{[n_{s/m}]} [v^*E^*]_n + (n_{s/m} - [n_{s/m}]) \cdot [v^*E^*]_{[n_{s/m}]} \quad (14)$$

215

$$[v^*E^*]_{ms} = ([n_{s/m}] - n_{s/m}) \cdot [v^*E^*]_{[n_{s/m}]} + \sum_{n=[n_{s/m}]+1}^{\infty} [v^*E^*]_n \quad (15)$$

with $[\cdot]$ denoting rounding to the integer part and $\lceil \cdot \rceil$ rounding to the least integer. This provides the latitude-dependent separation depicted in Figure 2 between the black curves at 2000 and 8000 km.

220 The partition of equations 13 - 15 is applied to calculate the time-mean transport by planetary eddies $\widetilde{vE}_p = \int_0^{p_s} [v^*E^*]_p \frac{dp}{g}$
synoptic eddies, $\widetilde{vE}_{sy} = \int_0^{p_s} [v^*E^*]_{sy} \frac{dp}{g}$, and mesoscale eddies $\widetilde{vE}_{ms} = \int_0^{p_s} [v^*E^*]_{ms} \frac{dp}{g}$. It is in a similar manner applied to
calculate the transport by quasi-stationary eddies at different scales. For instance the transport by quasi-stationary planetary
eddies $\widetilde{vE}_p^{q-s} = \int_0^{p_s} [\widetilde{v^*E^*}]_p \frac{dp}{g}$. The transport by transient eddies at the different scales is simply obtained from the difference
between the time-mean transport and the quasi-stationary transport. For instance, the transport by transient planetary eddies is
calculated as: $\widetilde{vE}_p^{tr} = \widetilde{vE}_p - \widetilde{vE}_p^{q-s}$.

225 An underlying interpretation is that at a longitude circle with for example 20000 km extent (at about 60° latitude), wave 1
includes the transport at a scale of and larger than the longitude cycle, wave 2 between 10000 and 20000 km, and so forth.
Hereby, wave 3 with a wavelength of 6700 km provides the transport between its wavelength and 10000 km and is accordingly
equally-therefore partitioned between the synoptic and planetary scale since the separation number for the scales. Since, the
wavenumber of separation between the planetary and synoptic scale is $n_s = 2.5$ meaning that $\lceil n_s \rceil - n_s = 0.5$ of eddy $[n_s] = 3$
230 ($n_{p/s} = 2.5$ at 60° latitude, this wave is equally partitioned between the two scales (second term in Eq. 13 and first term in
Eq. ??) is associated with the synoptic scale 14).

This continuous partition-partitioning of the transport by the first wave smaller than 8000 km, leads to the synoptic scale
including less transport than the application of a strict separation (Fig. S2). Hence, waves at a wavelength around and larger
than 8000 km are associated to-with the planetary scale, whereas the synoptic scale constitutes waves strictly smaller than
235 8000 km. Spectra depicting the separation into the scale components at different latitudes are provided in Figure S3 and a

detailed illustration of the separation is provided in Supplement Section 3. It should be noted that Wolf and Wirth (2017) ~~applied a related~~ also applied a continuous scale separation for the latitude-dependent detection of Rossby wave packages. The same procedure of scale separation is applied to the latent and dry energy transport.

240 Generally, the scale separation based on the Fourier decomposition is non-local, implying that the whole latitude circle influences the obtained eddies (Heiskanen et al., 2020). Therefore the Fourier decomposition is useful if the transport across the circle is governed by similar eddy scales, which we can observe from meteorological weather maps along zonal bands. Arguably, the zonal and meridional scales of atmospheric eddies match: from the investigation of meteorological weather maps, we know (i) that synoptic-scale cyclones are to a first order circular, and (ii) that the meridional extent, i.e. the amplitude, of Rossby waves, appears to roughly match the distance between a trough and a ridge in the zonal direction. Hence, as many
245 other studies (Graversen and Burtu, 2016; Lembo et al., 2019, e.g.), we interpret the zonal wavenumber of an eddy, which is associated with a zonal wavelength at a given latitude, as its spatial scale.

3 Wavelengths utilised for scale separation

Orlanski (1975) defines the mesoscale to be smaller than 2000 km, which is commonly accepted and hence ~~utilised as threshold~~ in this study as lower threshold for the synoptic scale. However, a widely-agreed separation between the planetary and synoptic
250 scales ~~has not been~~ is not established. Below, we argue for placing the separation between the planetary and synoptic scales at a wavelength of 8000 km, ~~even though the~~ based on the argument that baroclinic instability is the major instability and hence the physical mechanism of wave generation at the synoptic scale. The exact value is to some degree arbitrary. As previously presented ~~this partition is done in a continuous manner, this partitioning is done continuously~~, such that transport at and around the wavelength of 8000 km is associated ~~to~~ with the planetary scale, whereas synoptic waves are ~~considered to be~~ strictly
255 smaller than this threshold.

3.1 Theoretical baroclinic argument

Baroclinic instability is recognised as the single dominant instability of the synoptic scale (Markowski and Richardson, 2011, p.4). ~~The synoptic scale is thus supposed to include most~~ Thus, the synoptic scale should include most of the energy transports associated with eddies developing by baroclinic instability. Synoptic eddies are typically identified as cyclones and anticyclones
260 in sea-level pressure. ~~They~~, as well as shorter Rossby waves (Frederiksen, 1978) often referred to as transient synoptic Rossby waves (e.g. Röthlisberger et al., 2019; Ali et al., 2021). The cyclones and anticyclones interact vertically and baroclinically with the synoptic Rossby waves, generally recognised by upper-tropospheric oscillations of the jet stream; ~~often referred to as transient synoptic Rossby waves (e.g. Röthlisberger et al., 2019; Ali et al., 2021)~~. The theoretical scale (wavelength) of baroclinic eddies is given by 3.9 times the Rossby deformation radius, L_d , and hence estimated to be 4000 km by (Vallis, 2017,
265 p.354) and 4,800 km by Stoll et al. (2021) using more exact values obtained from extra-tropical cyclones. Note ~~;~~ that a low (high) pressure system spans half a wavelength ~~;~~ and has accordingly a typical diameter of around 2000 km.

A wavelength band between 2000–8000 km appears appropriate to capture the majority of the transport associated with baroclinically-induced synoptic eddies for ~~two~~three reasons: (i) ~~Synoptic eddies, such as cyclones and anticyclones, Cyclones and anticyclones~~ feature some variability in their size, but with a typical diameter between 1000 and smaller than 4000 km. (ii) Short, synoptic Rossby waves are considered to occur at zonal wavelengths within this band, with meridional amplitudes of around half a wavelength, as further discussed in Section 3.4. (iii) The non-local Fourier decomposition of the energy transport in situations of localised synoptic cyclones captures considerable transport at neighbouring waves to the cyclone (Heiskanen et al., 2020, Fig. 3), which may be considered a weakness of the Fourier decomposition. However, the band of wavenumbers around the localised eddy appears ~~to be~~ appropriate to capture the eddy.

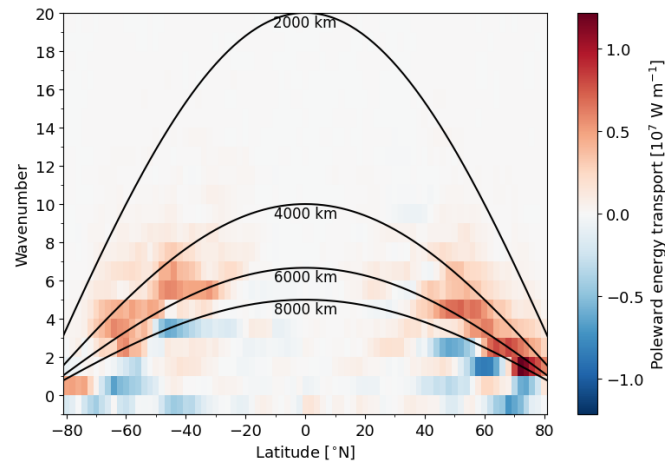


Figure 3. The composite of the anomalous poleward energy transport by individual waves ($(vE)_n$ of Eq. 11) at different latitudes 4 days after situations of anomalous high (90 percentile) meridional temperature contrasts around the latitude of energy transport. The anomalies on a daily resolution are computed from the 21 day and 9 year running mean climatology. The meridional temperature contrast is computed by the difference between the zone 10° equatorward and 10° poleward of the latitude of interest. Hence, red colours denote waves transporting more energy polewards 4 days after situations of enhanced meridional temperature differences. The wavenumbers corresponding to wavelengths of 2000, 4000, 6000 and 8000 km are depicted by black lines. Wave 0, is corrected by the meridional mass flux to express the instantaneous zonal mean transport according to Lembo et al. (2019).

275 3.2 Statistical baroclinic argument

Figure 3 depicts the anomalous daily energy transport by different waves ~~for situations 4~~ at a lag time of four days after enhanced meridional temperature gradients (90 percentile). Different ~~time differences-lag times (> 0)~~ provide similar results (~~not shown~~ Fig. S4) and the presented one of 4 days is in good agreement with Figure 1a of Baggett and Lee (2015). The separation between waves featuring enhanced and decreased transport as a response to the increased thermal contrast is at
 280 around 8000 km for all latitudes in the extra-tropics. Waves whose energy transport is most closely associated with the increased temperature gradient have a wavelength between 3000 and 8000 km with a maximum transport anomaly for wavelengths around

5000–6000 km. Since baroclinic instability is induced by a horizontal temperature gradient, this provides a strong statistical evidence, ~~in agreement with the theoretical argument from the previous section,~~ that baroclinic instability is an important development mechanism for ~~the synoptic waves as defined in this study~~ waves at wavelengths between 2000 and 8000 km ~~which is here defined as the synoptic scale~~. In the following, we refer to the anomalous energy transport ~~4~~ four days after situations of enhanced meridional temperature gradients as a "baroclinically-induced transport anomaly". The strength of the baroclinically-induced transport anomaly by the synoptic waves (Fig. 3 at a wavelength between 2000 and 8000 km) is around a third of the time-mean energy transport of these waves (Fig. 2), ~~so it is considerable~~. The mean meridional temperature contrast will also induce baroclinic waves transporting energy, which is not captured by this methodology.

290 The latitudinal independence of the wavelength of the baroclinically-induced transport anomaly provides a major argument for using a wavelength threshold to separate between the synoptic and planetary scales rather than a wavenumber threshold. It is surprising that the scale of maximum baroclinically-induced transport anomaly is independent of the latitude, ~~since~~ the Rossby deformation radius, $L_d = \frac{NH}{f}$, estimating the size of baroclinic eddies (Vallis, 2017), depends inversely on the Coriolis parameter, f , increasing with latitude, and depends linearly on the depth of the troposphere, H , and the tropospheric static stability, N , which ~~could be argued to~~ rather decrease with latitude (Stoll et al., 2021). Hence, baroclinic eddies would be expected to be smaller at higher latitudes. A hypothesis for the latitude-independence of the baroclinic eddies is as follows. Most extra-tropical cyclones originate from the mid-latitudes, where the meridional temperature contrast is the largest. The size of a cyclone is set during the genesis stage when the fastest-growing mode is prevailing. Many cyclones propagate to higher latitudes along the diagonal axis of the storm tracks (Shaw et al., 2016) and may preserve their original size.

300 We note that processes other than baroclinic instability may contribute to the formation of the here-defined synoptic eddies, such as heating contrasts. A future study ~~is going to will~~ further investigate the drivers of eddy transport at different scales.

3.3 Transient and quasi-stationary eddies

In the following, we show that the ~~partition~~ partitioning at a wavelength of 8000 km approximately captures our intuitive understanding that synoptic cyclones and synoptic Rossby wave packets are transient by nature, whereas ~~planetary waves are~~ more-most quasi-stationary, ~~eddies are at planetary scales~~ since they may be constrained by ~~orography and large-scale~~ large-scale orography and semi-stationary thermal forcing, such as heating contrasts between ocean and land (Vallis, 2017).

~~The~~ Indeed, the spectral decomposition of the annual-mean energy transport, \widetilde{vE} , at different latitudes reveals that most eddies smaller than 8000 km are of transient nature, whereas most of the quasi-stationary transport is at scales larger than 8000 km (Fig. 2). This is in good agreement with Dell'Aquila et al. (2005), who found in the average of the extra-tropical NH, that wave 3, here defined as planetary scale, features a typical ~~time~~ period of around a month, whereas smaller eddies, here associated ~~to~~ with the synoptic scale, are characterised by weekly or daily periods.

For the transient energy transport, the wavenumber of maximum transport is 6 or 7 in the subtropics and decreases towards the poles, such that the corresponding wavelength of maximum transient transport is around 5000 to 6000 km for all latitudes. Also in the moisture transport, the transient component reaches its maximum around 5000 km (Fig. S5), which is in good agreement with Lee et al. (2019). This wavelength corresponds well to the preferred scale of baroclinic eddies (4000–5000 km:

Vallis, 2017; Stoll et al., 2021), and of baroclinically-induced transport anomalies presented in the previous section. The latitudinal independence of the wavelength of maximum transient transport supports separating the planetary and synoptic scale by ~~the use of~~ using wavelength instead of wavenumber.

The preferred wavenumber and wavelength of the quasi-stationary transport, \widetilde{vE}^{q-s} , are latitude dependent (Fig. 2a). The ~~wavenumber~~ wavelength of maximum quasi-stationary transport is larger than 8000 km everywhere besides close to the North Pole where the Fourier decomposition is not applicable and around 40° S where the quasi-stationary transport is almost negligible. A short analysis of the preferred scales of the quasi-stationary transport is provided in Supplement Section 5.

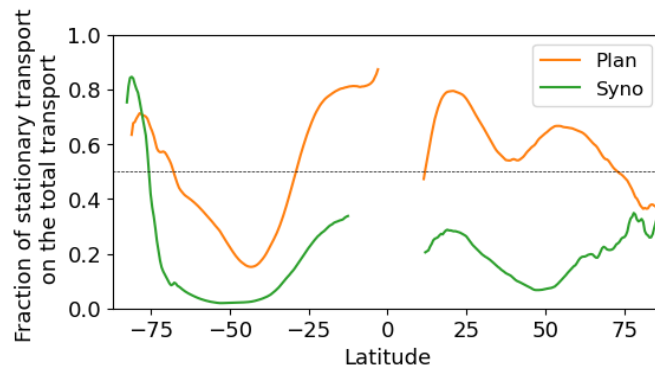


Figure 4. The fraction of the quasi-stationary part of the transport by planetary and synoptic waves as a function of latitude in ERA5.

~~Based on the partitioning into transient and quasi-stationary eddies, we here argue for the~~ The separation of synoptic and planetary waves at a wavelength of 8000 km ~~for separating between synoptic and planetary waves. However, it is evident that~~ the traditional decomposition of the transport into stationary and transient parts (Oort and Peixoto, 1983) is not equivalent to a ~~separation into planetary and synoptic waves~~ captures our intuitive understanding that (i) most transient transport occurs at the synoptic scale whereas (ii) most quasi-stationary transport is at the planetary scale, the inverse is valid for the former but not the latter: Planetary waves at a wavelength larger than 8000 km can be both transient and quasi-stationary (Fig. 2). In the latitude band between 70 and 30° S and poleward of 70° N, zones mainly characterised by open ocean, the transient component within the planetary transport is larger than the quasi-stationary component (Fig. 4). At latitudes with more land, the quasi-stationary component is responsible for 50–80% of the planetary transport, meaning that also at these latitudes a considerable proportion of the planetary transport is transient. Also the moisture transport, \widetilde{vQ} , comprises a planetary component that features both transient and quasi-stationary contributions, similar to the total energy transport \widetilde{vE} (Fig. S6).

In contrast to planetary transport, the inverse of (i) above, that synoptic transport is mainly (70–100%) of transient nature, is ~~valid~~ valid at almost all latitudes, ~~which (Fig. 4). This~~ coincides with the transient character of synoptic cyclones and Rossby waves of short ~~wavelength~~ wavelengths. The small quasi-stationary contribution (0–30%) to the synoptic transport is attributed to preferred spatial locations for synoptic activity. For instance, the NH Atlantic sector features more cyclonic activity than other longitudes, ~~which in the time-mean results~~ resulting in increased quasi-stationary transport in the time mean. This can be

inferred from Rydsaa et al. (2021), who show a large time-mean synoptic transport in the Atlantic sector for strong latent
340 transport events in winter at 70° N. However, in a zonal-mean perspective, the quasi-stationary contribution to the synoptic
transport is small (< 30%) compared to its transient part. Hence, for ~~the sake of simplicity~~ simplicity's sake, the synoptic
transport is not separated into a transient and quasi-stationary contribution in the remainder of this study.

An exception for the transient character of synoptic transport is over Antarctica, which is characterised by katabatic flows
advecting cold air towards lower latitudes, occurring at preferred locations of drainage, hence including a large stationary
345 component.

We conclude that the conventional decomposition of the transport into stationary and transient parts (Oort and Peixóto, 1983)
is to some degree related but not equivalent to a separation into planetary and synoptic waves.

3.4 Comparison to previous studies

Previous studies performing a wave decomposition qualitatively agree on the separation at a wavelength of 8000 km:

350 1) Baggett and Lee (2015) perform a Fourier decomposition of energy characteristics for the entire NH and demonstrate
different life cycle behaviour of long (planetary) and short (synoptic) waves for a separation between wave 3 and 4. Ali et al.
(2021) identify recurrent synoptic-scale transient Rossby wave packets in the mid-latitudes at wavenumbers between 4 and 15.
Wirth et al. (2018) note that planetary- scale Rossby waves are typically characterised by zonal wavenumbers 1–3, whereas
higher wavenumbers characterise synoptic-scale Rossby waves ~~are characterised by higher wavenumbers~~.

355 Their separation into planetary and synoptic eddies between waves 3 and 4 is similar to the here-applied partitioning at a
wavelength of 8000 km at 53° latitude, which is close to the location of maximum eddy activity (Fig. 1). For a hemisphere-wide
separation into planetary and synoptic eddies with a single wavenumber threshold as utilised by Baggett and Lee (2015) and
Ali et al. (2021), it appears crucial to capture the partition-partitioning around this latitude.

2) At 70° N, a wavelength of 8000 km is associated with a separation number $n_{syno} = 1.7$ $n_{sy} = 1.7$, meaning that 70% of
360 wave 2 is associated with the planetary scale and 30% to the synoptic scale. Accordingly, the lead-lag regression of the Arctic
temperature on the latent transport presented in Fig. 6 of Graversen and Burtu (2016) shows a clear difference between wave 1,
leading to heating of the Arctic, and waves 3 and larger, having a baroclinic signal. Wave 2 appears to share characteristics of
both wave groups, in agreement with the here-applied partition-partitioning of wave 2 at 70° N. Also Heiskanen et al. (2020)
find a good attribution of the meridional energy transport by an idealised cyclone to the synoptic scale, if the separation
365 between the planetary and synoptic scales is performed at rather small wavenumbers, even though they do not test a separation
between wave 2 and 3.

In conclusion, ~~a separation~~ separating at wavelengths of 8000 km is consistent with previous interpretations of planetary
and synoptic scale transports. However, as mentioned earlier, a sharp threshold likely does not exist. Therefore, the separation
wavelength of 8000 km is compared to wavelengths of 10000 km and 6000 km in the Supplement (Fig. S7). The main results
370 of this study are not affected by the exact choice of the separation wavelength, as shortly discussed in the Supplement.

Table 1. The applied terms to describe latitudinal bands in this study.

Climate zone	Latitude band
Equatorial region	$< 10^\circ$
Tropics	$< 23^\circ$
Sub-tropics	$23^\circ - 35^\circ$
Extra-tropics	$35^\circ - 90^\circ$
Mid-latitudes	$35^\circ - 60^\circ$
Polar boundary	Around 60°
Polar regions	$60^\circ - 90^\circ$

4 Organisation of the global energy transport

In this section, we analyse the atmospheric energy transport from ERA5 by utilising the scale-separation method. The applied latitudinal bands used in this study are provided in Table 1.

4.1 Annual-mean transport

375 Overview

The meridional atmospheric energy transport features ~~large~~ considerable similarities in the two hemispheres in most components and for most climate zones. Hence, to simplify the comparison of the two hemispheres, we display the poleward transport of both hemispheres at different latitudes on a common x-axis (Fig. 5a – c).

The annual-mean, zonal-mean poleward energy transport, \widetilde{vE} , is seamless in the sense that it resembles half of a sine curve for both hemispheres (black lines in Fig. 5a) as noted by Trenberth and Stepaniak (2003b). ~~In the SH subtropics~~ However, in the subtropic and mid-latitudes, ~~however, it the energy transport~~ is $\sim 15\%$ larger in the SH than in the ~~the~~ NH, which is balanced by more oceanic transport in the NH (Trenberth and Caron, 2001).

The energy transport, \widetilde{vE} , leads to an annual-mean divergence of around 40 W m^{-2} in the tropics and subtropics and convergence poleward of 40° latitude of up to 100 W m^{-2} in the polar regions (Fig. 5d) in good agreement with Trenberth and Stepaniak (2003a). The smaller divergence close to the equator is due to oceanic currents transporting heat to the subtropics ~~and hence~~, creating a cold tongue of sea-surface temperatures over the equatorial Pacific (Trenberth and Stepaniak, 2003b).

Despite the total energy transport, \widetilde{vE} , appearing seamless, different transport mechanisms are important in the different climate zones, as reflected by ~~a~~ considerable variations across latitudes in the moisture and dry transports (Fig. 5b and c), and ~~in~~ the scale components of the transport.

390 The total annual-mean moisture transport, \widetilde{vQ} , of both hemispheres features equatorward extremes at around 10° (Fig. 5b), poleward maxima at around 40° and decaying tails towards the poles. This leads to moisture divergence in the non-equatorial tropics and sub-tropics, whereas moisture converges in the equatorial regions and extra-tropics (Fig. 5e). The moisture transport

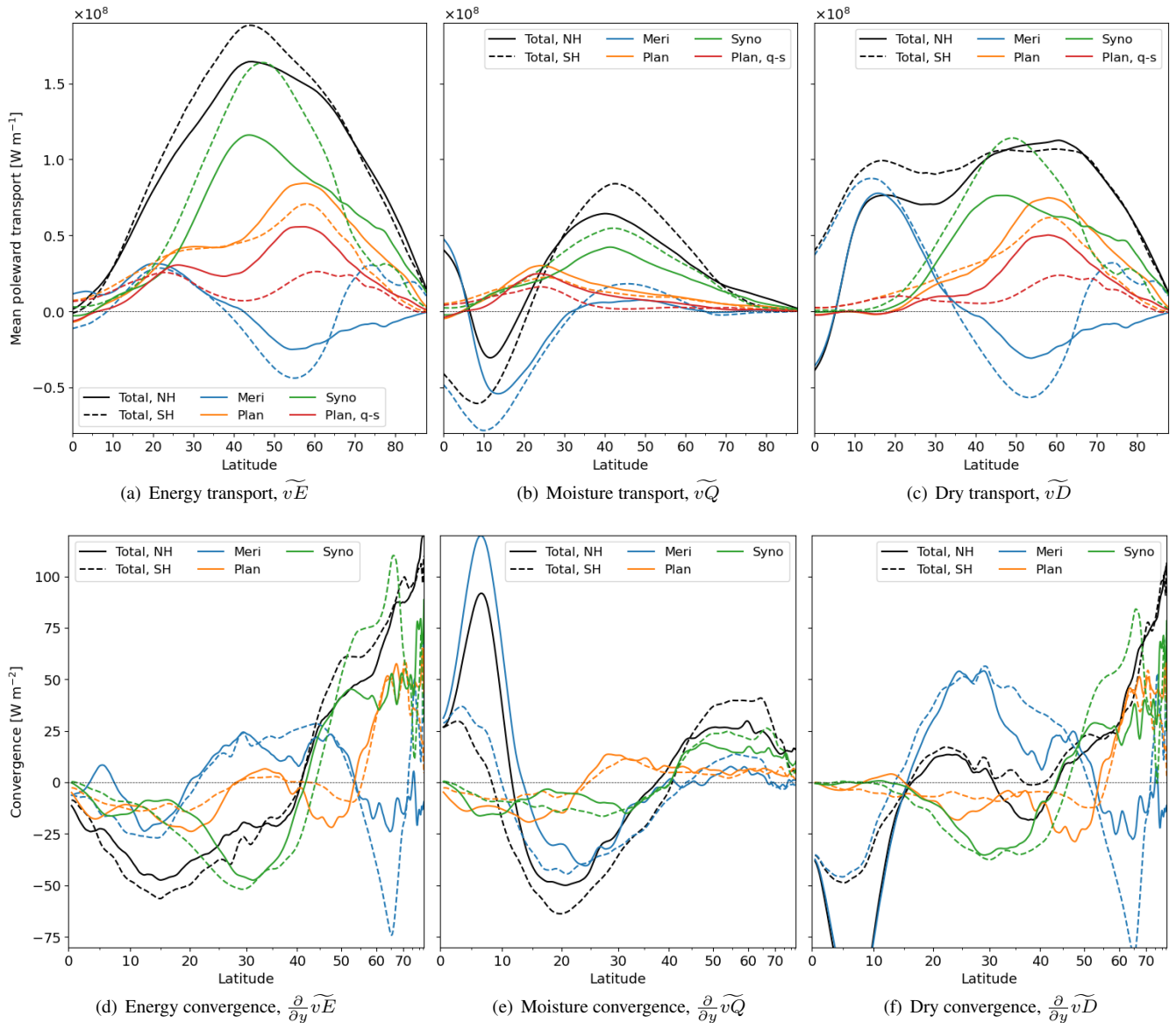


Figure 5. (a) Annual-mean, zonal-mean poleward atmospheric energy transport from ERA5. The transport of the Northern and Southern Hemisphere are depicted in solid and dashed lines, respectively. The total energy transport (black) is divided into the zonally symmetric meridional overturning circulation (blue) and wave components at the planetary (orange, waves ≥ 8000 km) and synoptic scales (green, < 8000 km). The quasi-stationary contribution of the planetary transport on a monthly scale is depicted in red. (b) and (c) as (a) but for the latent and dry energy transport components, respectively. (d)–(f) Resulting convergence of atmospheric energy from the transport components presented in (a)–(c), but for simplicity omitting the convergence of quasi-stationary planetary transport. The latitudes on the x-axis are scaled to represent equal surface areas, such that the integrated convergence in each component becomes zero.

is generally stronger in the Southern than Northern Hemisphere, due to more evaporation on the water surfaces of the SH. Further, some moisture is transported across the equator from the SH to the NH, leading to the highest convergence of moisture at around 7° N, which is in the annual mean the approximate location of the intertropical convergence zone (ITCZ).

The dry transport, \widetilde{vD} , is plateau-like between 10–65° latitude (Fig. 5c) and decays towards the equator and poles. Hence, it is mainly responsible for divergence in the equatorial regions and convergence in the polar regions (Fig. 5f). However, the scale components have different roles in the different climate zones.

Synoptic transport

Synoptic-scale waves are dominant in the transport of energy, dominate the energy transport in the mid-latitudes of both hemispheres (Fig. 5a). Although, however, synoptic transport is around 40% stronger in the SH than in the NH. This is in broad agreement with the finding of Peixoto and Oort (1992) that transient transport is more relevant in the SH, but keeping in mind that some of the transient transport occurs at the planetary scale (Fig. 4). Despite a broad spectrum of possible waves, most energy is transported by eddies at wavelengths between 2000 and 8000 km, demonstrating the dominant role of synoptic waves for the mid-litudinal energy transport (Fig. S7). This provides a different perspective from previous studies finding that transient eddies are responsible for the majority of mid-litudinal energy transport (e.g. Peixoto and Oort, 1992), since planetary waves may also be transient. The peak transport by synoptic waves is at around 45° latitude, the location of the climatological storm tracks (Hoskins and Hodges, 2002, 2005), and coincides with the zone of largest total energy transport. Hence, synoptic waves advect energy from the subtropics (< 40°) to the extra-tropics (Fig. 5d).

Extra-tropical synoptic waves transport approximately two thirds of their energy in dry form and one third in latent form, with the latent contribution being slightly more important (Fig. 5b,c). The latent contribution is slightly higher in the low mid-latitudes and less important, lower in the polar regions (Fig. 5b, e), where the cold atmosphere cannot hold much water vapour. Despite transporting more dry than moist energy, synoptic eddies are responsible for the majority of the most extra-tropical moisture transport. Especially in the polar regions, almost all moisture transport is by synoptic waves, whereas dry transport in the polar regions occurs at both synoptic and planetary scales.

Planetary transport

The planetary energy transport is similar in both hemispheres, different from quasi-stationary transport which is mainly relevant in the NH (Fig. 1a, 4, 5a). The latter is in agreement with Trenberth and Stepaniak (2003a), underscoring that quasi-stationary transport is a primary factor in the extratropical NH. The latter study associates this quasi-stationary transport to with the planetary scale, albeit without proof – a hypothesis which is confirmed by this study (Fig. 4). A new finding, that could partly be inferred from Fig. S3 of Lembo et al. (2019), is the near-symmetric structure of the planetary energy transport in both hemispheres. This symmetry could not have been anticipated by considering only quasi-stationary transport, since the planetary transport in the SH is mainly of transient character, transient (Fig. 4), in agreement with Mo (1986).

In both hemispheres, the planetary transport is similar in the subtropics and lower mid-latitudes. In the higher mid-latitudes and polar region of the SH, it is approximately 20% weaker than in the corresponding NH regions. Hence, eddies at similar spa-

tial scales are transporting the energy in both hemispheres (see also Fig. 2), ~~which is~~ likely due to similar physical mechanisms in both hemispheres forming the energy-transporting eddies.

Generally, two patterns of planetary transport are identified: 1) In the sub-tropics, most planetary transport is associated with quasi-stationary moisture transport, $\widetilde{\psi Q}_{plan}^{q-s} \widetilde{\psi Q}_p^{q-s}$. These waves presumably represent subtropical high-pressure and monsoon systems, which can prevail for several weeks. The planetary moisture transport leads to humidity divergence in the tropics and convergences in the sub- and extra-tropics (Fig. 5e).

2) In the extra-tropics, planetary eddies mainly transport dry energy and only little moisture. In the polar regions, this planetary energy transport is almost as important as synoptic transport. The peak in energy transport by planetary waves, $\widetilde{\psi E}_{plan} \widetilde{\psi E}_p$, is at the polar boundary around 60° latitude in both hemispheres (Fig. 5a,c), hence further poleward than the peak in synoptic transport at 45°. Thus, the planetary dry transport, $\widetilde{\psi D}_{plan} \widetilde{\psi D}_p$, leads to energy divergence in the sub-tropics and mid-latitudes and convergence in the polar regions (Fig. 5f). These planetary waves are mainly transient (Fig. 4: 70%) in the mid-latitudinal SH, whereas the quasi-stationary component dominates (60%) in the corresponding NH region, which agrees with Peixoto and Oort (1992). However, in the high latitudes of the SH, a considerable fraction of the planetary transport is quasi-stationary.

440 Meridional overturning circulation

The meridional overturning circulation, $\widetilde{\psi E}_{meri} \widetilde{\psi E}_{md}$, and its role in transporting energy poleward have long been known (e.g. Hadley, 1735; Lorenz, 1967; Peixoto and Oort, 1992). The Hadley circulation in the tropics dominates the energy transport in that region. The total energy transport, $\widetilde{\psi E}_{meri} \widetilde{\psi E}_{md}$, by the Hadley circulation is small compared to the thermally-direct dry component, $\widetilde{\psi D}_{meri} \widetilde{\psi D}_{md}$, and to the thermally-indirect latent component, $\widetilde{\psi Q}_{meri} \widetilde{\psi Q}_{md}$, since the latter largely compensates the former (Fig. 5a-c). Further, the annual-mean transport by the Hadley circulation is small, since transport into the tropical winter hemisphere originates from the equatorial summer hemisphere, ~~whereby the transport partly compensates leading to compensation of summer and winter cells~~ (see Section 4.2).

In the mid-latitudes, the meridional circulation, $\widetilde{\psi E}_{meri} \widetilde{\psi E}_{md}$, features the thermally-indirect Ferrel cell with a peak around 53°, which is almost twice as strong in the SH than NH. The transport by the Ferrel cell is mainly in the form of dry energy, which is to a small extent compensated by ~~moisture transport being thermally direct~~ thermally direct moisture transport. In the NH, the eddy-driven Ferrel cell (Vallis, 2017), spans the whole extra-tropics, including the Arctic. In the SH, a thermally-direct polar cell is evident in the dry transport, $\widetilde{\psi D}_{meri} \widetilde{\psi D}_{md}$, which is primarily driven by katabatic flow from Antarctica as noted by Trenberth and Stepaniak (2003a). Different to previous studies by for example Peixoto and Oort (1992) a NH polar cell is not evident in the here-utilised ERA-5 dataset, neither in the ~~annual-mean~~ annual mean nor in the summer or winter season (Sec. 4.2). In the Arctic, energy is transported by synoptic and planetary eddies favouring the formation of a Ferrel cell, whereas zonal symmetric katabatic flows, as observed in the Antarctic, do not develop due to the lack of a large ice dome centred over the pole.

Mesoscale transport

In contrast to synoptic and planetary waves, mesoscale waves, $\widetilde{\upsilon E}_{meso} \widetilde{\upsilon E}_{ms}$, at scales smaller than 2000 km, are only responsible for a negligible part of the energy and moisture transport at all latitudes (Fig. 2, S7), in accordance with Graversen and Burtu (2016), who show that wavenumbers 0-10 are responsible for the majority of the energy transport at all latitudes. Atmospheric models may have larger challenges ~~to reproduce~~ in reproducing mesoscale eddies as compared to eddies at larger scales. However, ERA5 at a horizontal grid spacing equivalent to 30 km ~~is able to~~ can reproduce mesoscale cyclones, such as polar lows (Stoll et al., 2021), and hence the negligible importance of mesoscale eddies for the total energy transport appears trustworthy. Due to its negligible role, we include the mesoscale into the synoptic transport for the remainder of this study, such that the sum of all scale components yields the total transport.

4.2 Seasonal transport

Some transport patterns become more apparent when seasons are analysed separately. The NH summer and the SH winter are ~~here defined by the months~~ defined by June to August, and the NH winter and the SH summer by ~~the months~~ December to February. In spring and autumn the energy transport is mainly similar to the annual-mean transport (Fig. 5, S8).

Due to seasonal variations in the thermal contrast between the equator and poles, more energy is transported poleward in the winter than in the summer hemisphere (Fig. 6a,d) in good agreement with previous studies (e.g. Peixoto and Oort, 1992). The seasonality in the transport is larger in the NH than the SH, as also noted by Trenberth and Stepaniak (2003a). This is ~~effected~~ affected by a larger annual temperature cycle in the NH due to its large continents having a smaller heat capacity than the oceans in the SH. Still, the two hemispheres share many characteristics in the atmospheric energy transport ~~when it comes~~ to regarding seasonality.

The location separating northward and southward total transport, the energy flux equator (Adam et al., 2016), is at around 10° latitude in the summer hemisphere (Fig. 6d). This is close to the ascending branch of the Hadley circulation (Vallis, 2017, p.514). In the tropics, the meridional overturning circulation, $\widetilde{\upsilon E}_{meri} \widetilde{\upsilon E}_{md}$, is most important (Fig. 6, blue). It transports energy from the summer tropics to the winter subtropics, whereas moisture, $\widetilde{\upsilon Q}_{meri} \widetilde{\upsilon Q}_{md}$, is advected in the opposite direction.

In the extra-tropics of both hemispheres, the synoptic transport, $\widetilde{\upsilon E}_{syno} \widetilde{\upsilon E}_{su}$, is little influenced by seasonality, in broad agreement with results from wavenumber separated transport of the NH mid-latitudes in Lembo et al. (2019) and with transient transport in Trenberth and Stepaniak (2003a). In contrast, the planetary transport, $\widetilde{\upsilon E}_{plan} \widetilde{\upsilon E}_p$, has a strong seasonality, being highly relevant in winter, but almost absent in summer. Hence, the summer is dominated by synoptic transport, $\widetilde{\upsilon E}_{syno} \widetilde{\upsilon E}_{su}$. Differently, in winter, both planetary and synoptic waves are highly relevant for the energy transport. In the NH winter, planetary waves, $\widetilde{\upsilon E}_{plan} \widetilde{\upsilon E}_p$, contribute to more transport than do synoptic waves, mainly by their quasi-stationary component, $\widetilde{\upsilon E}_{plan}^{q-s} \widetilde{\upsilon E}_p^{q-s}$. In the SH winter, planetary transport is also important, but mostly in its transient form, $\widetilde{\upsilon E}_{plan}^{tran} \widetilde{\upsilon E}_p^{tr}$, whereas its stationary part is small as noted previously (Oort and Peixoto, 1983).

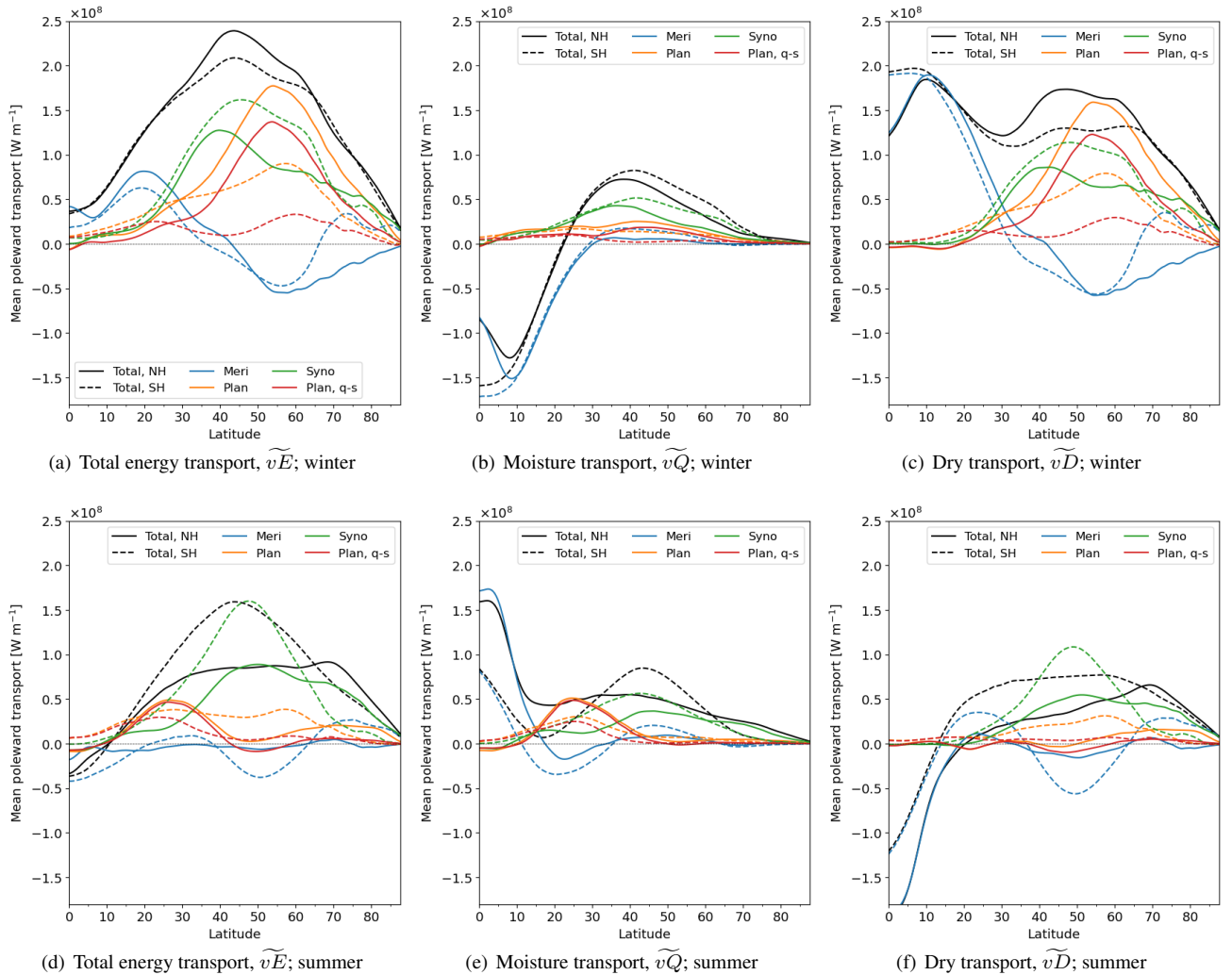


Figure 6. As Figure 5a-c, but for the seasonal-mean transport of (a-c) winter, and (d-f) summer for (a,d) the total energy transport, (b,e) its latent component, and (c,f) its dry component.

In the subtropics of the summer hemisphere, quasi-stationary planetary waves, $\widetilde{vE}_{plan}^{q-s} \widetilde{vE}_p^{q-s}$, are among the largest contributors to poleward energy transport (Fig. 6d). These waves are transporting energy mainly in the form of moisture, $\widetilde{vQ}_{plan}^{q-s}$ (Fig. 6e), presumably reflecting the summer monsoon and long-lasting sub-tropical high-pressure systems.

4.3 Inter-annual variability

In this study, the inter-annual variability in the energy transport is computed by the standard deviation of the annual-mean transport. The total energy transport, \widetilde{vE} , is only varying by a few percent between years for all latitudes (Fig. 7a). However,

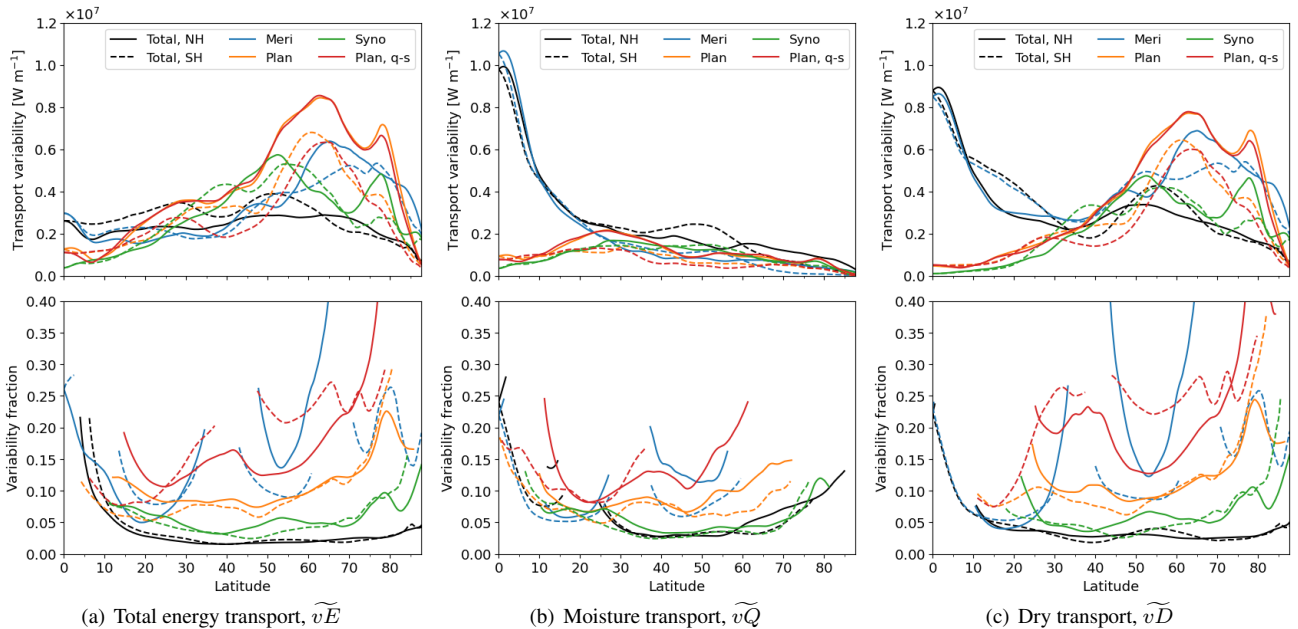


Figure 7. (a, upper panel) Inter-annual variability in the meridional energy transport, computed as the standard deviation in the annual transport, from ERA5 for the years 1979–2021 (black). The energy transport is divided into the meridional overturning circulation (blue) and wave components at the planetary (orange) and synoptic (green) scales. Solid and dashed lines depict the Northern and Southern Hemisphere, respectively. (Lower panel) The fraction of the variance of each transport component related to its absolute mean transport. Values are masked at latitudes $\pm 5^\circ$ where the mean transport crosses zero or where the absolute mean is smaller than 5% of the zonal-maximum of the total transport. (b) and (c) as (a) but for the latent and dry energy transport.

495 the inter-annual variability in the individual components is up to three times larger than the variability in the total transport, especially in the extra-tropics (Fig. 7a). Hence, large transport in one component is typically compensated by smaller transport in another component, as also, as noted by Trenberth and Stepaniak (2003a) and Lembo et al. (2019).

In contrast to the total energy transport, the variability of the total moisture transport, $v\tilde{Q}$, is larger than the variability of its individual scale components (Fig. 7b). Hence, the moisture transport components are not compensating each other in the same manner as the total energy transport components. Instead, the compensation of the components of the total energy transport is in the form of dry energy (Fig. 7c).

We hypothesise that the different co-variability of the scale contributions for the total energy and moisture transport are due to their different underlying mechanisms. Preliminary results point towards the annual-mean energy transport being induced by the meridional temperature gradient, i.e. energy, in the manner of a diffusion process with a globally almost constant diffusion coefficient. Hence, large transport in one component reduces the temperature gradient, leading to less transport in another component. Differently, moisture is a tracer of the atmospheric circulation and therefore, therefore, not described by a diffusion process, such that the components do not compensate in a similar manner as for similarly to the total energy transport.

The tropics feature large inter-annual variability in the moisture transport, \widetilde{vQ} , and approximately equally large variability in the dry transport, \widetilde{vD} (Fig. 7b,c). The large total variability in the moist and dry energy transports is almost entirely due to variability in the meridional ~~components, which overturning. This~~ is not surprising since the meridional ~~components are overturning is~~ responsible for most of the moist and dry energy transport in the tropics (Fig. 5b,c, 6b,c,e,f). However, the variability in total transport, \widetilde{vE} , is only a fifth of the moisture transport variability (Fig. 7a,b). Hence, if a strong Hadley circulation in one year ~~is effecting causes~~ a larger than usual thermally direct dry energy transport, it ~~will likely also effect likely also causes~~ a larger than usual thermally indirect latent energy transport, such that the total energy transported is more or less constant between years.

In the extra-tropics, the planetary transport, $\widetilde{vE}_{plan}\widetilde{vE}_p$, is the component exhibiting the largest inter-annual variability (Fig. 7a). This is remarkable since the annual-mean planetary transport is mainly smaller (Fig. 5) than the synoptic transport, ~~\widetilde{vE}_{syno} . Consequentially \widetilde{vE}_{sy} . Consequently,~~ the planetary transport, $\widetilde{vE}_{plan}\widetilde{vE}_p$, varies from year to year by approximately 10% in the mid-latitudes and 15–20% in the polar regions, ~~whereas. In contrast,~~ the synoptic transport, $\widetilde{vE}_{syno}\widetilde{vE}_{sy}$, varies only around 5%. The large planetary variability is mainly attributed to its quasi-stationary component, $\widetilde{vE}_{plan}^{q-s}\widetilde{vE}_p^{q-s}$, whereas its transient component, $\widetilde{vE}_{plan}^{tran}\widetilde{vE}_p^{tr}$, is much less variable (not shown). This demonstrates the "quasiness" of the quasi-stationary transport, being the transport component that varies most from year to year. This presumably reflects the role of (inter-)annual modes of climate variability in favouring different quasi-stationary circulations and planetary transports in different years.

The extra-tropical moisture transport, \widetilde{vQ} , is varying approximately equally for planetary, $\widetilde{vQ}_{plan}\widetilde{vQ}_p$, and synoptic waves, $\widetilde{vQ}_{syno}\widetilde{vQ}_{sy}$ (Fig. 7b). ~~However, due to synoptic waves being~~ Since synoptic waves are responsible for most of the moisture transport in the extra-tropics (Fig. 5b), the variability fraction is considerably higher for the planetary than the synoptic moisture transport.

5 Discussion and conclusion

In this study, we analyse the global atmospheric circulation by separating the meridional energy transport of the years 1979–2021 in the ERA5 reanalysis by spatial scales, by moist and dry components, and by quasi-stationary and transient parts. For separating the energy transport by scales for all latitudes, we apply a new approach by using the wavelength instead of the wavenumber utilised previously (e.g Graversen and Burtu, 2016).

We demonstrate that ~~a separation between separating~~ transport by synoptic and planetary eddies at a wavelength of 8000 km reflects the physically-grounded distinction between baroclinically-induced and other eddies. Moreover, we show that the ~~separation~~-wavelength of 8000 km is ~~largely latitude-independent~~ reasonable for separating at all latitudes. This separation wavelength approximately agrees with the ~~traditional-conventional~~ separation between transient and quasi-stationary eddies, as most eddy transport smaller than 8000 km is ~~of transient character transient~~, whereas most quasi-stationary transport occurs at the planetary scale larger than 8000 km. Despite the latter, ~~considerable~~ a considerable amount of the planetary energy transport is ~~of transient character transient~~, especially in the extratropical SH.

It should be noted that the scale separation is implemented ~~in a continuous manner such~~ continuously so that the largest eddy with a wavelength smaller than 8000 km is partitioned between the planetary and synoptic scales. This implies that the planetary transport includes waves of size around 8000 km, whereas synoptic transport is by waves strictly smaller than 8000 km.

545 Synoptic eddies with a wavelength of almost 8000 km may appear large scale. However, most baroclinically-induced and most transient energy transport organises at wavelengths around 5000 km at all latitudes (Fig. 2, 3), well in agreement with the predicted length by dry-baroclinic theory (Vallis, 2017). Despite the maximum at around 5000 km, the baroclinically-induced and transient energy transport occurs in a wavelength band between approximately 2000 and 8000 km, hence separating at around 5000 km would be misleading. ~~It should further be noted that one~~

550 Synoptic eddies include low and high-pressure systems near the surface and small-scale Rossby waves. The cyclones and anticyclones vertically interact baroclinically, with Rossby waves often strongest around the tropopause. One synoptic wave includes both a low and a ~~high pressure~~ high-pressure system. Hence, a ~~2000–8000~~ 2000–8000 km range implies that synoptic cyclones and anticyclones feature a typical diameter of between 1000 and smaller than 4000 km, ~~or and~~ that the typical distance between the cores of two independent (anti)cyclones is between 2000 and 8000 km. ~~This appears~~ Both appear reasonable from
555 comparison with weather maps. Even in situations of cyclone clusters, arguably situations where the distance between cyclones is unusually low, the spacing between cyclonic centres is around 2000 km (e.g. Weijenborg and Spengler, 2020, Fig. 2d-f), the lower end of the here-defined synoptic scale. Note ~~,~~ that the cyclones of that cluster share a common front ~~,~~ ~~hence appear and~~ hence are not independent. The distance of the cyclones is in the north-eastward direction, whereas the ~~next closest~~ cyclones in the zonal direction are at larger distances of around 5000 km. Hence, our methodology relying on a zonal Fourier decomposition
560 appears ~~to be~~ accurate for such situations.

A single, sharp spatial separation between the synoptic and planetary scales may not exist in the real world, ~~but~~. However, a spatial decomposition ~~has been demonstrated to be useful is helpful~~ for better understanding the atmospheric circulation and its impact on regional climate (Baggett and Lee, 2015; Graversen and Burtu, 2016; Röthlisberger et al., 2019). Here, we provide further arguments for the usefulness of separating the energy transport by spatial scale.

565 Different from the classical separation into quasi-stationary and transient energy transport, the spatial scales of the transport are quite similar in both hemispheres, pointing towards similarities in the contribution of active physical mechanisms. The most pronounced difference between the two separation methods is that planetary transport, $\widetilde{vE}_{plan}\widetilde{vE}_p$, is broadly similar in both hemispheres, whereas quasi-stationary transport, \widetilde{vE}^{q-s} , is mainly important in the NH.

In the ~~annual-mean~~ annual mean, most energy and moisture in the extra-tropics is transported by synoptic eddies, $\widetilde{vE}_{syno}\widetilde{vE}_{su}$.
570 It is remarkable that in the large range of atmospheric eddies, those at scales in the band between 2000 and 8000 km are responsible for ~~the majority most~~ of the meridional energy transport for the whole extra-tropics. This points towards the importance of baroclinic instability for inducing the extra-tropical energy transport as ~~has long been long~~ hypothesised (Holton and Hakim, 2013). However, other mechanisms may contribute to the formation of eddies in the synoptic scale. Hence, a future study is planned to investigate the causes and effects of energy transport at different scales.

575 The synoptic energy transport reveals to be little influenced by the season. In contrast, extra-tropical planetary transport, \widetilde{vE}_{plan} is of major importance only in the winter season mainly by transporting dry energy, \widetilde{vD}_{plan} . In winter around the Arctic boundary, quasi-stationary planetary waves, $\widetilde{vE}_{plan}^{q-s}$, dominate the energy transport. Such quasi-stationary planetary waves around the polar boundaries of both hemispheres feature the transport component with ~~globally~~ the largest inter-annual variability globally.

580 ~~Also-Other~~ known characteristics of the atmospheric circulation are reproduced in this study, such as the dominance of the Hadley circulation in the tropics for transporting energy, \widetilde{vE}_{meri} , to the winter hemisphere, and transporting moisture, \widetilde{vQ}_{meri} , in the opposite direction. In the subtropical summer, quasi-stationary planetary waves transporting moisture, $\widetilde{vQ}_{plan}^{q-s}$, are the largest contributor to poleward energy transport, which is associated with monsoon systems.

In this study, the atmospheric transport is analysed on an annual-mean and seasonal-mean basis, whereas on shorter timescales,
585 the transport can be highly sporadic and displays large deviations from climatology (Swanson and Pierrehumbert, 1997; Mes-sori and Czaja, 2013; Lembo et al., 2019). Some planetary transport events in the extra-tropics are for example equatorward. Hence, when the seasonal-mean poleward planetary transport is close to zero, this can either mean that the planetary transport is generally small or that poleward and equatorward transport events are balancing each other. ~~The~~ A follow-up study will investigate the intra-seasonal distribution of the different transport components ~~will be investigated in a follow-up study~~. An-
590 other option for investigating the spatio-temporal scale of eddies is the usage of Hayashi spectra as in Dell'Aquila et al. (2005) that performs a Fourier decomposition in both space and time.

Data availability. The ERA-5 dataset is publicly available. The computed decomposition of the energy transport based on ERA-5 and the code for the analysis is willingly provided on request.

Author contributions. RG calculated the Fourier-decomposed energy transport. PS performed further data processing and visualisation. All
595 authors contributed to interpreting the results and writing the manuscript.

Competing interests. The authors declare no competing interests.

Acknowledgements. Thanks to ECMWF for providing access to data from the ERA5 reanalysis. The data were partly processed at the supercomputer FRAM and stored at NIRD, both provided by the Norwegian Research Infrastructure Services (NRIS) Sigma2 AS under the projects NN9348K and NS9063K, respectively.

600 This work was funded by the Research Council of Norway (NFR) under the projects "The role of the atmospheric energy transport in recent Arctic climate change" (no. 280727) and "Stability of the Arctic climate" (no. 314570). We also thank two anonymous reviewers and the editors for their constructive comments, which considerably improved the manuscript.

References

- Adam, O., Bischoff, T., and Schneider, T.: Seasonal and Interannual Variations of the Energy Flux Equator and ITCZ. Part I: Zonally
605 Averaged ITCZ Position, *Journal of Climate*, 29, 3219 – 3230, <https://doi.org/10.1175/JCLI-D-15-0512.1>, <https://journals.ametsoc.org/view/journals/clim/29/9/jcli-d-15-0512.1.xml>, 2016.
- Ali, S. M., Martius, O., and Röthlisberger, M.: Recurrent Rossby wave packets modulate the persistence of dry and wet spells across the globe, *Geophys. Res. Lett.*, 48, e2020GL091452, 2021.
- Baggett, C. and Lee, S.: Arctic warming induced by tropically forced tapping of available potential energy and the role of the planetary-scale
610 waves, *Journal of the Atmospheric Sciences*, 72, 1562–1568, 2015.
- Bjerknes, J.: On the structure of moving cyclones, *Geophys. Publ.*, 1, 8 pp, 1919.
- Businger, S. and Reed, R. J.: Cyclogenesis in cold air masses, *Weather and Forecasting*, 4, 133–156, 1989.
- Dell’Aquila, A., Lucarini, V., Ruti, P. M., and Calmanti, S.: Hayashi spectra of the northern hemisphere mid-latitude atmospheric variability in the NCEP–NCAR and ECMWF reanalyses, *Climate Dynamics*, 25, 639–652, 2005.
- 615 Frederiksen, J.: Instability of planetary waves and zonal flows in two-layer models on a sphere, *Quarterly Journal of the Royal Meteorological Society*, 104, 841–872, 1978.
- Graversen, R. G.: Do changes in the midlatitude circulation have any impact on the Arctic surface air temperature trend?, *Journal of climate*, 19, 5422–5438, 2006.
- Graversen, R. G. and Burtu, M.: Arctic amplification enhanced by latent energy transport of atmospheric planetary waves, *Quarterly Journal*
620 *of the Royal Meteorological Society*, 142, 2046–2054, 2016.
- Graversen, R. G., Stoll, P. J., and Rydsaa, J. H.: Hvorfor er Arktis det området i verden med raskest oppvarming?, *Naturen*, 145, 160–167, 2021.
- Hadley, G.: VI. Concerning the cause of the general trade-winds, *Philosophical Transactions of the Royal Society of London*, 39, 58–62, 1735.
- 625 Heiskanen, T., Graversen, R. G., Rydsaa, J. H., and Isachsen, P. E.: Comparing wavelet and Fourier perspectives on the decomposition of meridional energy transport into synoptic and planetary components, *Quarterly Journal of the Royal Meteorological Society*, 146, 2717–2730, 2020.
- Hersbach, H., Bell, B., Berrisford, P., Hirahara, S., Horányi, A., Muñoz-Sabater, J., Nicolas, J., Peubey, C., Radu, R., Schepers, D., et al.: The ERA5 global reanalysis, *Quarterly Journal of the Royal Meteorological Society*, 146, 1999–2049, 2020.
- 630 Hofsteenge, M. G., Graversen, R. G., Rydsaa, J. H., and Rey, Z.: The impact of atmospheric Rossby waves and cyclones on the Arctic sea ice variability, *Climate Dynamics*, <https://doi.org/doi.org/10.1007/s00382-022-06145-z>, 2022.
- Holton, J. and Hakim, G.: *An Introduction to Dynamic Meteorology*, vol. 5, Academic Press, New York, USA, 2013.
- Hoskins, B. J. and Hodges, K. I.: New perspectives on the Northern Hemisphere winter storm tracks, *Journal of the Atmospheric Sciences*, 59, 1041–1061, 2002.
- 635 Hoskins, B. J. and Hodges, K. I.: A new perspective on Southern Hemisphere storm tracks, *Journal of Climate*, 18, 4108–4129, 2005.
- Kaspi, Y. and Schneider, T.: The role of stationary eddies in shaping midlatitude storm tracks, *Journal of the atmospheric sciences*, 70, 2596–2613, 2013.
- Lee, S., Woods, C., and Caballero, R.: Relation between Arctic moisture flux and tropical temperature biases in CMIP5 simulations and its fingerprint in RCP8.5 projections, *Geophysical Research Letters*, 46, 1088–1096, 2019.

- 640 Lembo, V., Messori, G., Graversen, R., and Lucarini, V.: Spectral Decomposition and Extremes of Atmospheric Meridional Energy Transport in the Northern Hemisphere Midlatitudes, *Geophysical Research Letters*, 46, 7602–7613, <https://doi.org/https://doi.org/10.1029/2019GL082105>, 2019.
- Lorenz, E.: *The nature and theory of the general circulation of the atmosphere*, World meteorological organization, 161, 1967.
- Markowski, P. and Richardson, Y.: *Mesoscale meteorology in midlatitudes*, vol. 2, John Wiley & Sons, Chichester, UK,
- 645 <https://doi.org/https://doi.org/10.1002/9780470682104>, 2011.
- Messori, G. and Czaja, A.: On the sporadic nature of meridional heat transport by transient eddies, *Quarterly Journal of the Royal Meteorological Society*, 139, 999–1008, 2013.
- Mo, K. C.: Quasi-Stationary States in the Southern Hemisphere, *Monthly Weather Review*, 114, 808 – 823, [https://doi.org/10.1175/1520-0493\(1986\)114<0808:QSSITS>2.0.CO;2](https://doi.org/10.1175/1520-0493(1986)114<0808:QSSITS>2.0.CO;2), 1986.
- 650 Oort, A. H. and Peixóto, J. P.: Global angular momentum and energy balance requirements from observations, in: *Advances in Geophysics*, vol. 25, pp. 355–490, Elsevier, 1983.
- Orlanski, I.: A rational subdivision of scales for atmospheric processes, *Bulletin of the American Meteorological Society*, pp. 527–530, 1975.
- Papritz, L. and Dunn-Sigouin, E.: What configuration of the atmospheric circulation drives extreme net and total moisture transport into the Arctic, *Geophysical Research Letters*, 47, e2020GL089769, 2020.
- 655 Peixoto, J. P. and Oort, A. H.: *Physics of climate*, American Institute of Physics, 1992.
- Rossby, C.-G.: Relation between variations in the intensity of the zonal circulation of the atmosphere and the displacements of the semi-permanent centers of action, *J. mar. Res.*, 2, 38–55, 1939.
- Röthlisberger, M., Frossard, L., Bosart, L. F., Keyser, D., and Martius, O.: Recurrent synoptic-scale Rossby wave patterns and their effect on the persistence of cold and hot spells, *Journal of Climate*, 32, 3207–3226, 2019.
- 660 Rydzaa, J. H., Graversen, R., Heiskanen, T. I. H., and Stoll, P.: Changes in atmospheric latent energy transport into the Arctic: Planetary versus synoptic scales, *Quart. J. Roy. Meteorol. Soc.*, 2021.
- Shaw, T., Baldwin, M., Barnes, E. A., Caballero, R., Garfinkel, C., Hwang, Y.-T., Li, C., O’gorman, P., Rivière, G., Simpson, I., et al.: Storm track processes and the opposing influences of climate change, *Nature Geoscience*, 9, 656–664, 2016.
- Stoll, P. J., Spengler, T., Terpstra, A., and Graversen, R. G.: Polar lows – moist-baroclinic cyclones developing in four different vertical wind shear environments, *Weather and Climate Dynamics*, 2, 19–36, <https://doi.org/10.5194/wcd-2-19-2021>, 2021.
- 665 Swanson, K. L. and Pierrehumbert, R. T.: Lower-tropospheric heat transport in the Pacific storm track, *Journal of the atmospheric sciences*, 54, 1533–1543, 1997.
- Trenberth, K. E.: Climate diagnostics from global analyses: Conservation of mass in ECMWF analyses, *Journal of Climate*, 4, 707–722, 1991.
- 670 Trenberth, K. E. and Caron, J. M.: Estimates of meridional atmosphere and ocean heat transports, *Journal of Climate*, 14, 3433–3443, 2001.
- Trenberth, K. E. and Stepaniak, D. P.: Covariability of components of poleward atmospheric energy transports on seasonal and interannual timescales, *Journal of climate*, 16, 3691–3705, 2003a.
- Trenberth, K. E. and Stepaniak, D. P.: Seamless poleward atmospheric energy transports and implications for the Hadley circulation, *Journal of Climate*, 16, 3706–3722, 2003b.
- 675 Vallis, G. K.: *Atmospheric and oceanic fluid dynamics*, Cambridge University Press, 2017.
- Weijenborg, C. and Spengler, T.: Diabatic heating as a pathway for cyclone clustering encompassing the extreme storm Dagmar, *Geophysical Research Letters*, 47, e2019GL085777, 2020.

- Wirth, V., Riemer, M., Chang, E. K., and Martius, O.: Rossby wave packets on the midlatitude waveguide—A review, *Monthly Weather Review*, 146, 1965–2001, 2018.
- 680 Wolf, G. and Wirth, V.: Diagnosing the Horizontal Propagation of Rossby Wave Packets along the Midlatitude Waveguide, *Monthly Weather Review*, 145, 3247 – 3264, <https://doi.org/10.1175/MWR-D-16-0355.1>, 2017.